

INTER-AMERICAN TROPICAL TUNA COMMISSION
COMISION INTERAMERICANA DEL ATUN TROPICAL

3RD MEETING OF THE SCIENTIFIC WORKING GROUP

LA JOLLA, CALIFORNIA, USA

MAY 6-8, 2002

BACKGROUND PAPER A3
(DRAFT OF BACKGROUND PAPER TO BE SUBMITTED AT THE 69TH MEETING OF THE IATTC)

**STATUS OF SKIPJACK TUNA IN THE EASTERN PACIFIC OCEAN
IN 2001 AND OUTLOOK FOR 2002**

PREPARED APRIL 2002

**STATUS OF SKIPJACK TUNA IN THE EASTERN PACIFIC OCEAN IN 2001
AND OUTLOOK FOR 2002**

by

Mark N. Maunder

CONTENTS

1. Executive summary	1
2. Data	1
3. Assumptions and parameters.....	4
4. Stock assessment	7
5. Stock status.....	11
6. Simulated effects of future fishing operations.....	13
7. Future directions.....	13
References	13
Figures.....	15
Tables	48
Appendix: Additional results from the assessments.....	52

1. EXECUTIVE SUMMARY

This document presents the most current stock assessment of skipjack tuna (*Katsuwonus pelamis*) in the eastern Pacific Ocean (EPO), estimated with A-SCALA, an age-structured, statistical catch-at-length analysis. This method was used for the 2001 assessments of skipjack tuna in the EPO (Maunder and Watters 2001a). The differences compared to the previous assessment include extending the modeling time frame to start in 1975 (as apposed to 1981) and investigation of the sensitivity to domed-shaped selectivity curves verses asymptotic (monotonic) selectivity curves. New catch, effort, and length-frequency data have been included for 2001 and updated for previous years. The stock assessment requires a substantial amount of information. Data on landings, discards, fishing effort, and the size compositions of the catches of several different fisheries have been analyzed. Several assumptions regarding processes such as growth, recruitment, movement, natural mortality, fishing mortality, and stock structure have also been made. Environmental influences on recruitment and have been investigated.

The recruitment of skipjack tuna to the fisheries in the EPO is variable. Fishing mortality is estimated to be about the same or lower than the rate of natural mortality. These levels are supported by estimates from tagging data. Biomass mainly fluctuates in response to the variations in recruitment, except for the low biomass levels in the early 1980s that were estimated to be a consequence of high fishing mortality rates.

The analysis indicates that a group of very strong cohorts entered the fishery in 1998-99, and that these cohorts increased the biomass and catches during 1999 and 2000. There is also an indication the most recent recruitments are low, which may lead to lower biomasses and catches. However, these estimates of low recruitment are based on limited information, and are therefore very uncertain.

There is a large amount of variation in SBR for skipjack tuna in the EPO. In 2002 the SBR is at a low level (about 0.23). AMSY and yield-per-recruit calculations estimate that maximum yields are achieved with infinite fishing mortality because the critical weight is smaller that the average weight at recruitment to the fishery. However, this is uncertain because of uncertainties in the estimates of natural mortality and growth.

2. DATA

Catch, effort, and size-composition data for January 1975-December 2001 were used to conduct the stock assessment of skipjack tuna in the eastern Pacific Ocean (EPO). The data for 2001, which are

preliminary, include records that had been entered into the IATTC databases as of early April. All data are summarized and analyzed on a monthly basis.

2.1. Definitions of the fisheries

Skipjack are fished in the EPO by purse seiners (in schools associated with floating objects and in unassociated schools) and by baitboats. Vessels of all sizes participate in these fisheries. Most of the catches are made between northern Baja California and southern Peru, but the catches are relatively low off southern Mexico. The fishery extends westward to about 140°W in equatorial waters. Fisheries associated with floating objects take place mostly off Central America and northern South America, but extend far offshore. The floating objects include both flotsam and fish-aggregating devices (FADs). The fisheries directed at unassociated schools take place mostly off Baja California and off Central America and northern South America. Only small amounts of skipjack are caught in sets on dolphin-associated tunas. Only larger vessels participate in this fishery.

Most of the catches of yellowfin, skipjack, and bigeye prior to about 1960 were taken by baitboats. These vessels fished from Southern California to northern Chile. The fishery took place mostly within about 250 nautical miles of the coast and in the vicinity of a few offshore islands. There are only a few baitboats left now, all of which are registered in Ecuador, Mexico, or the United States (Anonymous, 2000: Table 2). These vessels are all small, and they fish relatively close to shore off Ecuador, northern Mexico, and Southern California.

Eleven fisheries are defined for the stock assessment of skipjack tuna. These fisheries are defined on the basis of gear type (purse seine and baitboat), purse-seine set type (sets on floating objects, unassociated schools, and dolphins), and IATTC length-frequency sampling area or latitude. The skipjack fisheries are defined in Table 2.1, and the spatial extent of each fishery is illustrated in Figure 2.1. The boundaries of the length-frequency sampling areas are also illustrated in Figure 2.1. We have ignored the longline fisheries because they capture a very minimal amount of skipjack. The baitboat fishery and the purse seine fishery that makes sets on schools associated with dolphins have been combined because they consist of only a small fraction of the total skipjack catch.

In general, fisheries are defined such that, over time, there is little change in the size composition of the catch. Fishery definitions for purse-seine sets on floating objects are also stratified to provide a rough distinction between sets made mostly on FADs (Fisheries 1-2, 4, 8-9, and 11), and sets made on a mix of flotsam and FADs (Fisheries 3 and 10).

2.2. Catch and effort data

To conduct the stock assessment of skipjack, the catch and effort data in the IATTC databases are stratified according to the fishery definitions described in Section 2.1 and presented in Table 2.1.

The IATTC staff has adopted three definitions relating to catch data; these terms are used throughout this report.

Landings – the amount of fish (weight or numbers) removed from the population at a given time and delivered to any landing facility at a subsequent time. (The landings are not necessarily delivered to the landing facility during the same time period that the fish were removed from the population.)

Discards – the amount of fish (weight or numbers) removed from the population at a given time and NOT delivered to any landing facility at a subsequent time. (These fish are generally thrown overboard.)

Catch – the total amount of fish (weight or numbers) removed from the population at a given time (catch = landings + discards).

All three of these types of data are used to assess the stock of skipjack tuna. Removals by Fishery 7 are simply landings (Table 2.1). Removals by Fisheries 1-4 are landings plus some discards resulting from

inefficiencies in the fishing process (see Section 2.2.2) (Table 2.1). The removals by Fisheries 5-6 are landings plus some discards resulting from inefficiencies in the fishing process and from sorting the catch. Removals by Fisheries 8-11 are only discards resulting from sorting the catch taken by Fisheries 1-4 (see Section 2.2.2) (Table 2.1).

2.2.1. Catch

Trends in the catch of skipjack tuna in the EPO during each month between January 1975 and December 2001 are illustrated in Figure 2.2. The majority of catch of skipjack has been taken by purse-seine sets on skipjack associated with floating objects and by purse-seine sets on skipjack in unassociated schools. It should be noted that the assessment presented in this report uses data starting from January 1, 1975, and substantial amounts of skipjack were already being removed from the EPO by that time.

There has been substantial annual and monthly variation in the catches of skipjack tuna made by the surface fleet (Figure 2.2). This variation occurs in the total amount of catch, the spatial distribution of the catch, and in the set type of the catch. In general, catches of skipjack have been dominated by sets on floating objects and unassociated schools, with floating object sets increasing since 1993. There have been some extremely large catches in the central floating-object fishery (Fishery 2) and the southern unassociated fishery (Fishery 6) during 1999 and 2000.

2.2.2. Effort

The method that is used to estimate the amount of fishing effort, in days fished, exerted by purse-seine vessels is described by Watters and Maunder (2001).

Trends in the amount of fishing effort, in days fishing, exerted by the 11 fisheries defined for the stock assessment of skipjack tuna in the EPO are plotted in Figure 2.3. There has been substantial variation in the amount of fishing effort exerted by surface gears. The total fishing effort directed at tunas associated with floating objects (Figure 2.3, Fisheries 1-4) was relatively high prior to 1985, low from 1986 to 1992 and then increased again from 1993 to present. In the early period the effort was mainly in Fisheries 3 and 4 and in the later period it was in Fisheries 1 and 2. The effort has increased substantially since 1993 in all the floating-object fisheries except the coastal fishery (Figure 2.3, Fisheries 1, 2, and 4). Fishing effort directed at tunas in unassociated schools was higher prior to 1985 (Figure 2.3, Fisheries 5 and 6). It is assumed that the fishing effort in Fisheries 8-11 is equal to that in Fisheries 1-4 (Figure 2.3) because the catches taken by Fisheries 8-11 are derived from those taken by Fisheries 1-4 (see Section 2.2.3). Because Fishery 7 is a combination of both dolphin-associated purse-seine sets and baitboats, and these methods represent only a small fraction of the total skipjack catch in the EPO, the effort is assumed constant for this fishery, and this fishery is not used to provide information on biomass.

The large month-to-month variations in fishing effort illustrated in Figure 2.3 are partly a result of how fisheries have been defined for the purposes of stock assessment. Fishing vessels often tend to fish in different locations at different times of year, and, if these locations are widely separated, this behavior can cause fishing effort in any single fishery to be more variable.

2.2.3. Discards

For the purposes of stock assessment, it is assumed that skipjack tuna are discarded from catches made by purse-seine vessels for one of two reasons. First, skipjack may be discarded because of inefficiencies in the fishing process (e.g. when the catch from a set exceeds the remaining storage capacity of the fishing vessel). Second, they may be discarded because the fishermen sort the catch to select fish that are larger than a certain size. In either case, the amount of skipjack discarded is estimated with information collected by IATTC observers, applying methods described by Maunder and Watters (submitted). Regardless of the reason that skipjack are discarded, it is assumed that all discarded fish die.

Estimates of discards resulting from inefficiencies in the fishing process are added to all the catches made by purse-seine vessels. No observer data are available to estimate discards for surface fisheries that

operated prior to 1993, and it is assumed that there were no discards during this period. For surface fisheries, excluding baitboats, that have operated since 1993 (Fisheries 1-6), there are periods when observer data are not sufficient to estimate the discards. For these periods, it is assumed that the discard rate (discards/landings) is equal to the discard rate for the closest time period when observer data were sufficient to estimate the discards. No observer data are available to estimate the discards for the baitboat fishery (contained within Fishery 7), and it is assumed that there are no discards in this fishery.

Discards that result from the process of sorting the catch in the floating-object fisheries (Fisheries 1-4) are treated as separate fisheries (Fisheries 8-11). It is important to treat these discards separately because the size-composition data collected from port sampling (see Section 2.3) cannot provide information about the size of these discarded fish. Thus, discards that result from sorting the catch represent removals for which size compositions must be obtained at sea. IATTC observers collect limited information on the sizes of discarded tunas. All that is known about the fish that are discarded during sorting is that they are mostly small fish that weigh less than about 2.5 kg. By creating fisheries whose catch is composed exclusively of small, discarded fish, it is possible to conduct a stock assessment without detailed data on the size composition of the discards. This is possible because the small fish that are discarded during sorting are likely to belong to only one or a few age classes. The catches taken by Fisheries 8-11 (Figure 2.2) are currently the best estimates of the amount of fish discarded by sorting the catches taken by Fisheries 1-4. Estimates of the amount of fish discarded during sorting are made only for fisheries that take skipjack associated with floating objects (Fisheries 1-4) because sorting is infrequent in the other purse-seine fisheries.

2.3. Size-composition data

The fisheries of the EPO all catch skipjack tuna of similar sizes (35-75 cm). The average size composition of the catch from each fishery defined in Table 2.1 is illustrated in Figure 4.2.

Data on the size compositions of discards from fisheries that catch skipjack in association with floating objects (Fisheries 8-11) are limited. IATTC observers collect information on the size composition of the discards, but they do not currently measure the fish. The observers categorize the fish into the following groups: large (greater than 15 kg), medium (2.5-15 kg), and small (less than 2.5 kg). It is assumed that the catches in Fisheries 8-11 are composed entirely of fish in the small category. Thus, using the weight-length relationship presented in Section 3.1.1, this assumption implies that the catches in Fisheries 8-11 are composed entirely of fish less than about 51 cm in length (less than about 16 months old). It is assumed that skipjack are recruited to the discard fisheries when they are about 9 months old and about 30 cm in length and are not vulnerable to those fisheries after they reach 15 months of age.

2.4. Auxiliary data

No auxiliary data was included in the assessment.

3. ASSUMPTIONS AND PARAMETERS

3.1. Biological and demographic information

3.1.1. Growth

The IATTC staff has used a growth rate of 24 cm per year, from Forsbergh (1989), in its yield-per-recruit modeling of skipjack. Bayliff (1988) used tagging data to calculate the following estimates for the parameters of the von Bertalanffy growth equation:

Method	K (annual)	L_{∞} (mm)
ungrouped	0.658	885
grouped	0.829	846

(With the grouped method all fish that were in the same size-at-release (275-324 mm, 325-374 mm, *etc.*)

and time-at-liberty (31-40 days, 41-50 days, *etc.*) groups were combined and treated as single fish to reduce the influence of groups containing large numbers of fish.) It should be noted, however, that the results of sensitivity analyses performed by Bayliff (1988) indicated that the estimates of the parameters were imprecise. Maunder (2001) provided estimates similar to Bayliff (1988) and concluded that data from large and small skipjack are needed. We use the grouped estimates of Bayliff (1988) with the assumption that a 30 cm skipjack is 9 months old as a prior for mean length-at-age. The age at 30 cm is based on evidence that skipjack produce about 0.8 rings on their otoliths each day (Wild and Foreman 1980) and a 30-cm skipjack has about 210 rings (Uchiyama and Struhsaker 1981).

The weight-length relationships of skipjack in the EPO is $W = 5.5293 \times 10^{-6} L^{3.336}$, where W = weight in kg and L = length in cm (Hennemuth, 1959).

3.1.2. Recruitment and reproduction

Information on the reproduction of skipjack in the EPO is given by Anonymous (1998: 26) and Schaefer (2001). Spawning is fairly widespread between about 15°N and 10°S from the coast of the Americas to about 130°W at sea-surface temperatures (SSTs) equal to or greater than 24°C. It is assumed that skipjack tuna can be recruited to the fishable population during every month of the year.

No strong assumptions are made about the relationship between adult biomass (or abundance) and recruitment in the stock assessment of skipjack. An assumption is made, however, about the way that recruitment can vary around its average level. It is assumed that recruitment should not be less than 25 percent of its average level and not greater than four times its average level more often than about 1 percent of the time. These constraints imply that, on a monthly time step, extremely small or large recruitments should not occur more than about once every 8 years.

Skipjack tuna are assumed to be recruited to the discard fisheries in the EPO at about 30 cm (about 9 months old) (see Section 2.3). At this size (age), the fish are vulnerable to being discarded from fisheries that catch fish in association with floating objects (*i.e.* they are recruited to Fisheries 8-11).

The proportion of females in each age-class which are mature is used to estimate the spawning biomass of the stock. All females aged 16 months and older are assumed to be mature. The sex ratio is assumed to be 50-50, based on the data from Schaefer (2001).

3.1.3. Movement

Information of the movements of skipjack in the EPO is given by Schaefer *et al.* (1961), Fink and Bayliff (1970), and Hunter *et al.* (1986). The percentage of skipjack released in the western Pacific that were at liberty 0 to 30 days, 31 to 180 days, and more than 180 days that traveled more than 500 nautical miles are 0, about 5, and about 30, respectively. Twenty-seven tagged skipjack released in the EPO have been recaptured in the central or western Pacific (Bayliff, 1988: Appendix 2), but no tagged skipjack released in the central or western Pacific have been recaptured in the EPO. It should be recognized that the amounts of tagged fish recaptured at various locations are dependent on the amounts of fishing effort in those locations. If tagging experiments are initiated where the fishing effort is heavy the distances moved by the fish that are recaptured are likely to be less than they would have been if the tagged fish had been released in areas of both heavy and light fishing. Nevertheless, for the purposes of the current assessment, it is assumed that skipjack move around the EPO at rates that are rapid enough to ensure that the population is randomly mixed at the start of each month of the year.

3.1.4. Natural mortality

Attempts to estimate the natural mortality rate (M) of skipjack, and the many problems associated with these studies, are discussed by Wild and Hampton (1994). The IATTC staff has used a value of 1.5, on an annual basis, for M in yield-per-recruit analyses (Anonymous, 2000: 69). In contrast to yellowfin and bigeye tuna, skipjack do not show an increase in the proportion of males for older fish (Schaefer 2001). Hampton (2000) showed, using tagging data, that estimates of natural mortality for skipjack in the

western Pacific Ocean (WPO) showed higher levels for old and young individuals. The results showed much higher natural mortality rates for skipjack of sizes less than 40 cm and greater than 70 cm. We use the estimates from the WPO (Hampton 2000) to develop an age-specific natural mortality curve to use in the assessment (Figure 3.1). Hampton's estimates of high natural mortality for old skipjack may be an artifact of the tagging data due to older fish moving out of the fishery. Therefore we have assumed that natural mortality is constant over old ages. Hampton's estimates of high natural mortality for young skipjack may also be an artifact of the tagging data due to tagging mortality, so we assume a lower natural mortality.

3.1.5 Stock structure

Skipjack occur throughout the tropical and subtropical waters of the Pacific Ocean, and it is known that there is considerable exchange of fish among areas. The stock structure of skipjack has been studied by various methods, including analyses of catch statistics, life history, tagging, biochemical genetic data, and data on the chemical composition of the otoliths of the fish. Research in these fields has been conducted by many organizations, including the IATTC, the South Pacific Commission (now the Secretariat of the Pacific Community; SPC), the U.S. National Marine Fisheries Service (NMFS), and various organizations in Japan. The research results pertinent to a solution to this problem were examined by Argue (1981), and the conclusions were discussed in detail by Anonymous (1984: 88-91). In summary, there were two principal hypotheses for skipjack in the Pacific Ocean. The separate-subpopulation hypothesis stated that there are two or more genetically-distinct subpopulations of skipjack in the Pacific Ocean, and the clinal hypothesis stated that separate subpopulations of skipjack do not exist in the Pacific Ocean, but that there is isolation by distance, *i.e.* the probability of any two fish interbreeding is an inverse function of their distance from one another. It was concluded by Argue (1981) that the available data did not favor either the separate-subpopulation or the clinal hypothesis. Subsequent studies, described by Anonymous (1995: 69-71) have not furnished information that would serve better as the basis for management decisions. (Those studies should not be considered as futile, however, as the information from them may eventually be combined with information to be gathered in the future to achieve a greater understanding of the stock structure of skipjack in the Pacific Ocean.) For the purposes of the current stock assessment, it is assumed that there are two stocks, one in the EPO and the other in the western and central Pacific.

3.2. Environmental influences

The influences of some environmental variables on the apparent abundance of skipjack in the EPO are discussed by Forsbergh (1989). The abundance of skipjack larvae in the central and western Pacific approximately doubles with each 1-degree increase in SST from 23°C to a maximum of 29°C. The catches per unit of effort (CPUEs) of skipjack by commercial fishing gear in the EPO are positively correlated with the SSTs in the central Pacific 18 months previously. The catches of skipjack by surface gear tend to be reduced during El Niño episodes, however, due to the fact that during such times the depth of the thermocline increases, so that the fish spend less time at the surface than during anti-El Niño years (Joseph and Miller, 1989).

The previous stock assessment (Maunder and Watters 2002a) included the assumption that oceanographic conditions might influence recruitment of skipjack tuna in the EPO. To incorporate the possibility of an environmental influence on recruitment of skipjack in the EPO, a temperature variable was incorporated into the previous stock assessment model to determine whether there is a statistically-significant relationship between this temperature variable and estimates of recruitment. However, because the model has been extended back to 1975, the environmental time series does not cover the same period (the environmental data starts in 1980). Assessment of yellowfin tuna (Maunder and Watters 2002b) showed that estimates of recruitment were essentially identical with or without the inclusion of the environmental data. This is also supported by the results of Maunder and Watters (submitted). Therefore, we correlate recruitment with the environmental time series outside the stock assessment model. For the current

assessment, SST in an area combined of two boxes from 20°N-10°S latitude and 100°W-150°W longitude and 10°N-10°S latitude and 85°W-100°W longitude, the total number of 1x1 degree squares that have average SST $\geq 24^\circ$ C, and the southern oscillation index, are used as the candidate environmental variables. The environmental data were compared to recruitment, based on the month during which the fish were hatched. The SST data are posted on the Internet (<http://Ingrid.ldeo.Columbia.edu>) by the U.S. National Oceanographic and Atmospheric Administration, National Centers for Environmental Prediction, and made available through the Lamont-Doherty Earth Observatory/International Research Institute for Climate Prediction Data Library.

4. STOCK ASSESSMENT

An age-structured population dynamics model A-SCALA (Maunder and Watters, submitted) and information contained in catch, effort, and size-composition data are used to assess the status of the skipjack tuna stock in the EPO. This method was used in the 2000 and 2001 assessments for yellowfin (Maunder and Watters 2001, 2002b), and bigeye (Watters and Maunder 2001, 2002), and the 2001 assessment of skipjack (Maunder and Watters 2002a) tuna in the EPO. The model is based on the method described by Fournier *et al.* (1998). The term “statistical” indicates that the method implicitly recognizes that data collected from fisheries do not perfectly represent the population; there is uncertainty in our knowledge about the dynamics of the system and about how the observed data relate to the real population. The assessment model uses monthly time steps to describe the population dynamics. The parameters of the stock assessment model are estimated by comparing the predicted catches and size compositions to data collected from the fishery. After the parameters of the model have been estimated, the model is used to estimate quantities that are useful for managing the stock. Skipjack have a higher natural mortality rate than yellowfin and bigeye tuna, so a monthly timeframe is needed to allow information from individual cohorts to be extracted from the length-frequency data.

Since fisheries data are complex, the ways in which the model is fitted to the observed data are constrained. It is fitted by finding a set of population dynamics and fishing parameters that maximize the likelihood of having observed the catch and size-composition data, given the amount of fishing effort exerted by each fishery. This likelihood is calculated under a set of constraints. Many of these constraints are identified as assumptions in Section 3, but the following list identifies other important constraints that are used to fit the assessment model to observed data on skipjack tuna:

1. The discard fisheries (Fisheries 8-11) should catch only fish of the first few age classes.
2. If a fishery can catch fish of a particular age, it should be able to catch fish that are of somewhat lesser and greater ages.
3. There are random events that can cause the relationship between fishing effort and fishing mortality to change slightly from month to month. On average, the events that cause the fishing mortality to be slightly higher or lower should cancel one another out.
4. The data for fisheries whose catch is composed of discards from sorting (Fisheries 8-11) and the combined dolphin associated and baitboat fishery (Fishery 7) provide relatively little information about biomass levels.

It is important to note that the assessment model can, in fact, make predictions that do not adhere strictly to the constraints above, nor to those outlined in Section 3. The constraints are designed so that they can be violated if the observed data provide good evidence against them.

The A-SCALA model has a variety of possible parameter and model structure formulations that can be used. In the 2001 assessment many of these different formulations were applied to the skipjack population in the EPO. These models all gave similar trends in biomass and recruitment. Among the models, the estimates of absolute biomass and the spawning biomass ratio (SBR) differed. However, they all indicated that the exploitation rate was low, that recruitment was highly variable, and that recruitment drove the trends in biomass. In 2001 two models were presented that differed in how the initial

exploitation rate in 1981 was calculated. In this assessment we again present two models, however the model is extended to start in 1975. The two models differ in their assumptions about selectivity. The first model allows selectivity for all fisheries, except the discard fisheries which have fixed selectivities, to be dome-shaped (i.e. non-monotonic). In the second model, the selectivities for fisheries 2-7 are penalised to be asymptotic (i.e. monotonically increasing). Dome-shaped selectivities allow the existence of a population of large skipjack that are invulnerable to the fishery. An asymptotic selectivity ensures that large skipjack are fully selected by the fishery, and, if there are no large skipjack caught, the model will estimate that skipjack do not survive to be large. Therefore, the asymptotic selectivities should provide higher estimates of exploitation rate and lower estimates of biomass. We suggest that these two analyses will bound the possible exploitation rates for skipjack in the EPO.

Both models have the estimated and fixed parameters as described below. The fishing mortality used to estimate the initial conditions is calculated as the average fishing mortality over the first 2 years. Deviations around the numbers at age in the initial conditions are estimated for the first 10 age classes.

The following parameters have been estimated for the current stock assessment of skipjack tuna in the EPO:

1. recruitment to the fishery in every month from January 1975 through December 2001 (This includes estimation of average recruitment and recruitment anomalies.);
2. monthly catchability coefficients for the 11 fisheries that take skipjack from the EPO (This includes estimation of random effects.);
3. selectivity curves for 7 of the 11 fisheries (Fisheries 8-11 have an assumed selectivity curve.);
4. initial population size and age structure;
5. mean length at age (Figure 3.2);
6. amount of variation in length at age.

The values of the parameters in the following list are assumed to be known for the current stock assessment of skipjack in the EPO.

1. natural mortality at age (Figure 3.1);
2. maturity of females at age;
3. sex ratio at age;
4. selectivity curves for the discard fisheries (Fisheries 8-11).

4.1. Indices of abundance

The CPUEs of the 11 fisheries defined for the current assessment of skipjack in the EPO are illustrated in Figure 4.1. A discussion of this figure is provided in the following two paragraphs, but trends in CPUE should be interpreted with caution. Trends in estimated biomass are discussed in Section 4.2.3.

There has been substantial variation in the CPUEs of skipjack tuna of the surface fleet (Figure 4.1, Fisheries 1-6). Prior to 1993, the CPUEs for floating-object sets were fairly consistent, but since then the CPUE has increased, except in the coastal fishery (Fishery 3). The CPUE has reduced in the most recent years (Figure 4.1, Fisheries 1-4). The CPUEs of skipjack captured in unassociated schools (Figure 4.1, Fisheries 5 and 6) are generally higher in the late 1980s and the late 1990s, with very high CPUEs in 1999 and 2000 for the southern fishery (Fishery 6) and in 1995 and 1999 for the northern fishery (Fishery 5). The northern unassociated fishery has shown more variation. Due to the short time period of the fisheries that discarded skipjack from sorting the catches of Fisheries 1-4 (Figure 4.1, Fisheries 8-11), it is not possible to determine whether there were any trends in CPUE for these fisheries. The combined baitboat and dolphin-associated fishery (Fishery 7) is not presented because we assumed constant effort for this fishery.

4.2. Assessment results

Before proceeding to the results it is important to highlight the sensitivity of the results to the initial starting values. For the nonmonotonic selectivity assessment two minima were found. One minimum occurred at very high biomass levels and low fishing mortality levels. The other minimum occurred at levels similar to the monotonic selectivity assessment. The two results were achieved by starting at different initial values for the selectivity curves. The high biomass low fishing mortality result was obtained with the initial values for the selectivities curves based on domed-shaped selectivity curves. This result was similar to those presented last year (Maunder and Watters 2002a). The lower biomass higher fishing mortality result was obtained with the initial values for the selectivities curves based on an asymptotic selectivity curves. The lower biomass higher fishing mortality result had a total log-likelihood that was about 25 units larger than the high biomass low fishing mortality result, therefore we used this result in the rest of the document.

The A-SCALA method provides a reasonably good fit to the catch and size-composition data for the 11 fisheries that catch skipjack tuna in the EPO. The assessment model is constrained to fit the time series of catches made by each fishery almost perfectly. The 11 time series of skipjack catches predicted with the A-SCALA method are almost identical to those plotted in Figure 2.2. It is important to predict the catch data closely, because it is difficult to estimate biomass if the total amount of fish removed from the stock is not well known.

It is also important to predict the size-composition data as accurately as possible, but, in practice, it is more difficult to predict the size composition than to predict the total catch. Accurately predicting the size composition of the catch is important because these data contain most of the information that is necessary for modeling recruitment and growth, and, thus, for estimating the impact of fishing on the stock. Predictions of the size compositions of skipjack tuna caught by Fisheries 1-7 are summarized in Figure 4.2. This figure simultaneously illustrates the average observed size compositions and the average predicted size compositions of the catches for these seven fisheries. (It should be recalled that the size-composition data are not available for discarded fish, so Fisheries 8-11 are not included in this discussion.) The predicted size compositions for all the fisheries with size-composition data (Fisheries 1-7) are good (Figure 4.2). However, there is a tendency to overpredict the frequency of very small and very large fish. A description of the size distribution of the catch for each fishery is given in Section 2.3.

Estimates of growth differed from the prior. The growth rates were much higher for the first few age-classes, but smaller individuals but lower for the intermediate ages. For the older ages, the mean lengths-at-age were highly constrained so that the mean length-at-age essentially equaled the prior.

The results presented in the following section are likely to change in future assessments because (1) future data may provide evidence contrary to these results, (2) the assumptions and constraints used in the assessment model may change, and (3) this is only a preliminary analysis, and future modifications are likely.

4.2.1. Fishing mortality

The temporal trends in fishing mortality are similar between the two assessments (Figure 4.3 and Table A.1). There is a period of high fishing mortality prior to 1983 and another peak in the fishing mortality rate in 1993-1994. These peaks correspond to estimated increases in catchability (Figure 4.5). The fishing mortality is higher for the monotonic selectivity assessment compared to the nonmonotonic selectivity assessment. The average age-specific fishing mortality rates differ substantially between the two assessments (Figure 4.3). As would be expected, the monotonic selectivity assessment has fishing mortality increasing with age, while the nonmonotonic selectivity assessment has fishing mortality decreasing for the older ages. This is a consequence of the selectivity curves (Figure 4.4) which are more domed-shaped for the nonmonotonic assessment. The expansion of the floating object fishery that started in 1993 appears to have increased the fishing mortality rate on older skipjack, and, in the nonmonotonic

selectivity assessment, reduced fishing mortality rates on the younger skipjack.

4.2.2. Recruitment

There was no clear relationship between skipjack recruitment and the environmental variables (Figure 4.6). It is possible that other oceanographic variables influence the recruitment, and the IATTC staff intends to consider other environmental indices as candidates for explaining the variation in recruitment. This will include trying to determine whether the environmental index should be based on conditions during the early juvenile phase, rather than solely during the larval phase. Identifying one or more environmental variables that are correlated with recruitment would be useful for making predictions about future recruitments.

Over the range of predicted biomasses, the abundance of skipjack recruits appears to be unrelated to the biomass of spawners at the time of spawning. (Spawners are defined as female skipjack that are mature; see section 3.1.2) (Figure 4.6).

The estimated time series of skipjack recruitment is shown in Figure 4.7, and the total recruitment estimated to occur in each year is presented in Table 4.1. The most conspicuous features of this time series is the very high variation in recruitment from month to month and the large recruitments to the fishery in 1983, 1994-95, and 1998-99. The analysis indicates that a group of very strong cohorts entered the fishery in 1998-99 and that these cohorts increased the biomass (Figure 4.9) and catches (Figure 2.2) during 1999 and 2000. There is also an indication the most recent recruitments are low, which may lead to lower biomasses and catches. However, these estimates of low recruitment are based on limited information, and are therefore very uncertain.

There is very little difference in the overall trends in recruitment between the two assessments, except that the nonmonotonic selectivity assessment indicates much higher recruitment in 1998-99.

4.2.3. Biomass

Biomass is defined as the total weight of skipjack tuna that are one or more years old. The trends in the biomass of skipjack in the EPO are shown in Figure 4.9, and estimates of the biomass at the beginning of each year in Table 4.1. The biomass has been highly variable during the period 1975 to 2001. The biomass was estimated to decline from 1975 to a very low level in 1982, then increase rapidly to a peak in 1985. The biomass then declined to a low level in 1994 before rapidly increasing in 1995. The biomass stayed high until another rapid increase in late 1998 and in 1999. The biomass has since declined to much lower levels. The temporal trends in biomass are similar for the two assessments, except that the peak in 1999 is about twice as high for the nonmonotonic selectivity assessment compared to the monotonic selectivity assessment. The variation in biomass can be mostly attributed to changes in recruitment (Figure 4.9c and 4.9d), except that the low levels observed during the early 1980s were estimated to be due to high fishing mortality.

4.2.4. Average weights of fish in the catch

The overall average weights of the skipjack tuna caught in the EPO predicted by the analysis have been around 2-4 kg for most of the period from 1975 to 2001, and are similar among fisheries (Figure 4.10). However, average weight was consistently lower in the early 1980s, when the fishing mortality rate was estimated to be high.

4.3. Comparisons to external data sources

Tagging data from 1980 and 1981 were used to estimate the fishing mortality rate. The estimates of total mortality using the method of Robson and Chapman (1961) are 0.53 and 0.55 monthly, respectively. These estimates include natural and fishing mortality. Removing a factor of 0.14 for average monthly natural mortality gives estimates of fishing mortality of 0.39 and 0.41. These are likely to be over estimates as the tagging data is from a limited area where most of the catch was taken and are therefore measure of the localised exploitation rate. These estimates also include losses due to migration, longterm

tag loss, and longterm tagging mortality. The average monthly estimates of fishing mortality from the stock assessment model for 1980 and 1981 are 0.12 and 0.3-0.4 for ages 9-20 and 21+ (Table A.1). Bayliff (1977) analysed earlier tagging data (1950-1973) and found a range of total mortality rates from around 0.3 to 1.0. This indicates that the stock assessment results are somewhat consistent with the tagging data.

4.4. Sensitivity to assumptions

No additional sensitivity analyses were conducted this year.

4.5. Summary of the results from the assessment model

The recruitment of skipjack tuna to the fisheries in the EPO is variable. Fishing mortality is estimated to be about the same or lower than the rate of natural mortality. These levels are supported by estimates from tagging data. Biomass mainly fluctuates in response to the variations in recruitment, except for the low biomass levels in the early 1980s that were estimated to be a consequence of high fishing mortality rates.

The analysis indicates that a group of very strong cohorts entered the fishery in 1998-99, and that these cohorts increased the biomass and catches during 1999 and 2000. There is also an indication the most recent recruitments are low, which may lead to lower biomasses and catches. However, these estimates of low recruitment are based on limited information, and are therefore very uncertain.

5. STOCK STATUS

The status of the stock of skipjack tuna in the EPO is assessed by considering calculations based on the spawning biomass, yield per recruit, and AMSY.

Precautionary reference points, as described in the FAO Code of Conduct for Responsible Fisheries and the United Nations Fish Stocks Agreement, are being widely developed as guides for fisheries management. The IATTC has not adopted any target or limit reference points for the stocks it manages, but some possible reference points are described in the following three subsections. Possible candidates for reference points are:

1. S_{AMSY} as a target reference point.
2. F_{MSY} as a limit reference point
3. S_{min} , the minimum spawning biomass seen in the model time frame, as a limit reference point.

Maintaining tuna stocks at levels capable of producing the AMSY is the current management objective specified by the IATTC Convention. The S_{min} reference point is based on the observation that the population has recovered from this population size in the past (e.g the levels estimated in the early 1980s). Development of reference points that are consistent with the precautionary approach to fisheries management will continue.

5.1. Assessment of stock status based on spawning biomass

The ratio of spawning biomass during a period of harvest to that which might accumulate in the absence of fishing is useful for assessing the status of a stock. This ratio, termed the “spawning biomass ratio” (SBR), is described by Maunder and Watters (2001). The equation defining the SBR is

$$SBR_t = \frac{S_t}{S_{F=0}}$$

where S_t is the spawning biomass at any time (t) during a period of exploitation, and $S_{F=0}$ is the spawning biomass that might be present if there were no fishing for a long period (*i.e.* the equilibrium spawning biomass if $F = 0$). The SBR has a lower bound of zero. If the SBR is zero, or slightly greater than that,

the population has been severely depleted and is probably overexploited. If the SBR is one, or slightly less than that, the fishery has probably not reduced the spawning stock. If the SBR is greater than one, it is possible that the stock has entered a regime of increased production.

The SBR has been used to define reference points in many fisheries. Various studies (*e.g.* Clark 1991, Francis 1993, Thompson 1993, Mace 1994) suggest that some fish populations can produce the AMSY when the SBR is somewhere in the range 0.3 to 0.5, and that some fish populations are not able to produce the AMSY if the spawning biomass during a period of exploitation is less than about 0.2. Unfortunately, the types of population dynamics that characterize tuna populations have generally not been considered in these studies, and their conclusions are sensitive to assumptions about the relationship between adult biomass and recruitment, natural mortality, and growth rates. In the absence of simulation studies that are designed specifically to determine appropriate SBR-based reference points for tunas, estimates of SBR_t can be compared to an estimate of SBR for a population that is producing the AMSY ($SBR_{AMSY} = S_{AMSY}/S_{F=0}$). S_{AMSY} is the spawning biomass at AMSY (see Section 5.3 for details regarding calculation of AMSY and related quantities).

Estimates of quarterly SBR_t for skipjack in the EPO have been computed for every month represented in the stock assessment model (the first month of 1975 to the first month of 2002). Estimates of the spawning biomass during the period of harvest (S_t) are presented in Section 4.2.2. The equilibrium spawning biomass after a long period with no harvest ($S_{F=0}$) was estimated by assuming that recruitment occurs at an average level expected from an unexploited population. Unfortunately, the SBR level that would give rise to AMSY (SBR_{AMSY}) is not estimable for skipjack, as is discussed in section 5.3. Therefore we are unable to discuss the SBR in relation to SBR_{AMSY} .

At the beginning of 2002, the spawning stock of skipjack tuna in the EPO was considerably reduced. The estimate of SBR at this time was about 0.23, with lower and upper 95% confidence limits of 0.16 and 0.30.

A time series of SBR estimates for skipjack tuna in the EPO is shown in Figure 5.1. The SBR has been below the average unexploited level for most of the period 1975 to 2001, except for the peak in 1999.

5.2. Assessment of stock status based on yield per recruit

Yield-per-recruit calculations estimate that the critical age for skipjack is less than the age at recruitment to the fishery. This indicates that maximum yield-per-recruit is achieved by an infinite fishing mortality. The yield-per-recruit calculations depend on estimates of growth and natural mortality which are both uncertain.

5.3. Assessment of stock status based on AMSY

Maintaining stocks at levels capable of producing the AMSY is the management objective specified by the IATTC Convention. One definition of AMSY is the maximum, long-term yield that can be achieved under average conditions, using the current, age-specific selectivity pattern of all fisheries combined. AMSY calculations are described by Maunder and Watters (2001). The calculations are changed from Maunder and Watters (2001) to include the Beverton-Holt stock-recruitment relationship where applicable.

The current assessment assumes that there is no stock-recruitment relationship for skipjack tuna, therefore the relative yield curve is equal to the relative yield-per-recruit curve. Therefore, from section 5.2, AMSY is achieved by an infinite fishing mortality. As this is not realistically achievable, we do not present any quantities based on AMSY.

5.4. Summary of stock status

There is a large amount of variation in SBR for skipjack tuna in the EPO. In 2002 the SBR is at a low level (about 0.23). AMSY and yield-per-recruit calculations estimate that maximum yields are achieved with infinite fishing mortality because the critical weight is smaller than the average weight at recruitment

to the fishery. However, this is uncertain because of uncertainties in the estimates of natural mortality and growth.

6. SIMULATED EFFECTS OF FUTURE FISHING OPERATIONS

Historical biomass of skipjack tuna has been mainly driven by fluctuations in recruitment, therefore future projections will also be determined by recruitment. This is particularly true for short lived species like skipjack. For this reason, we have not provided projections of future biomass.

7. FUTURE DIRECTIONS

7.1. Collection of new and updated information

The IATTC staff intends to continue its collection of catch, effort, and size-composition data from the fisheries that catch skipjack tuna in the EPO. New data collected during 2002 and updated data for 2001 will be incorporated into the next stock assessment.

The IATTC staff also intends to screen other types of environmental data for use in the stock assessment model.

The IATTC staff intends to continue developing the assessment for skipjack.

7.2. Refinements to the assessment model and methods

The IATTC staff intends to continue to develop the A-SCALA method and further refine the stock assessment of skipjack tuna in the EPO. The staff also intends to reinvestigate indices of skipjack abundance from the CPUEs of purse seiners fishing in the EPO. If this work is successful, the results will, as far as possible, be integrated into future stock assessments.

Development of reference points that are consistent with the precautionary approach to fisheries management will continue.

REFERENCES—REFERENCIAS

- Anonymous. 1984. Annual Report of the Inter-American Tropical Tuna Commission 1983: 272 pp.
- Anonymous. 1995. Annual Report of the Inter-American Tropical Tuna Commission 1994: 296 pp.
- Anonymous. 1998. Annual Report of the Inter-American Tropical Tuna Commission 1996: 306 pp.
- Anonymous. 2000. Annual Report of the Inter-American Tropical Tuna Commission 1998: 357 pp.
- Argue, A.W. (editor). 1981. Report of the Second Skipjack Survey and Assessment Programme workshop to review results from genetic analysis of skipjack blood samples. South Pacific Comm., Skipjack Survey and Assessment Programme, Tech. Rep., 6: v, 39 pp.
- Bayliff, W.H. 1988. Growth of skipjack, *Katsuwonus pelamis*, and yellowfin, *Thunnus albacares*, tunas in the eastern Pacific Ocean as estimated from tagging data. Inter-Amer. Trop. Tuna Comm., Bull. 19: 307-385.
- Fink, B.D., and W.H. Bayliff. 1970. Migrations of yellowfin and skipjack tuna in the eastern Pacific Ocean as determined by tagging experiments, 1952-1964. Inter-Amer. Trop. Tuna Comm., Bull. 15: 1-227.
- Forsbergh, E.D. 1989. The influence of some environmental variables on the apparent abundance of skipjack tuna, *Katsuwonus pelamis*, in the eastern Pacific Ocean. Inter-Amer. Trop. Tuna Comm., Bull. 19: 429-569.
- Fournier, D.A., J. Hampton, and J.R. Sibert. 1998. MULTIFAN-CL: a length-based, age-structured model for fisheries stock assessment, with application to South Pacific albacore, *Thunnus alalunga*. Can. J. Fish. Aquat. Sci. 55: 2105-2116.
- Hampton J. 2000. Natural mortality rates in tropical tunas: size really does matter. Can. J. Fish. Aquat. Sci. 57: 1002-1010.

- Hennemuth, R.C. 1959. Additional information on the length-weight relationship of skipjack tuna from the eastern tropical Pacific Ocean. . Inter-Amer. Trop. Tuna Comm., Bull. 4: 23-37.
- Hunter, J.R., A.W. Argue, W.H. Bayliff, A.E. Dizon, A. Fonteneau, D. Goodman, and G.R. Seckel. 1986. The dynamics of tuna movements: an evaluation of past and future research. FAO Fish. Tech. Pap. 277: 1-78.
- Joseph, J., and F.R. Miller. 1989. El Niño and the surface fishery for tunas in the eastern Pacific. Japan. Soc. Fish. Ocean., Bull. 53: 77-80.
- Maunder, M.N. and G.M. Watters. submitted. A-SCALA: an age-structured statistical catch-at-length analysis for assessing tuna stocks in the eastern Pacific Ocean. Draft manuscript submitted to the IATTC Bull.
- Maunder, M.N. and G.M. Watters. 2001. Status of yellowfin tuna in the eastern Pacific Ocean. Inter-Amer. Trop. Tuna Comm., Stock Assessment Report 1: 5-86.
- Miyake, M.P. 1968. Distribution of skipjack in the Pacific Ocean, based on records of incidental catches by the Japanese longline tuna fishery. Inter-Amer. Trop. Tuna Comm., Bull. 12: 509-608.
- Mizuno K., M. Okazaki, H. Nakano, and H. Okamura. 1997. Estimation of underwater shape of tuna longline by using micro-BTs. Bull. Nat. Res. Inst. Far Seas Fish. 34: 1-24.
- Schaefer, K.M. 2001. An assessment of skipjack tuna (*Katsuwonus pelamis*) spawning in the eastern Pacific Ocean. Fish. Bull. 99: 343-350.
- Schaefer, M.B., B.M. Chatwin, and G.C. Broadhead. 1961. Tagging and recovery of tropical tunas, 1955-1959. Inter-Amer. Trop. Tuna Comm., Bull. 5: 341-455.
- Uchiyama, J.H. and P. Struhsaker. 1981. Age and growth of skipjack tuna, *Katsuwonus pelamis*, and yellowfin tuna, *Thunnus albacares*, as indicated by daily growth increments of sagittae. Fish. Bull. 79: 151-162.
- Watters, G.M. and M.N. Maunder. 2001. Status of bigeye tuna in the eastern Pacific Ocean. Inter-Amer. Trop. Tuna Comm., Stock Assessment Report 1: 109-211.
- Wild, A. and T.J. Foreman. 1980. The relationship between otolith increments and time for yellowfin and skipjack tuna marked with tetracycline. Inter-Amer. Trop. Tuna Comm., Bull. 17: 507-560.
- Wild, A. and J. Hampton. 1994. A review of the biology and fisheries for skipjack tuna, *Katsuwonus pelamis*, in the Pacific Ocean. FAO Fish. Tech. Pap. 336 (2): 1-51.

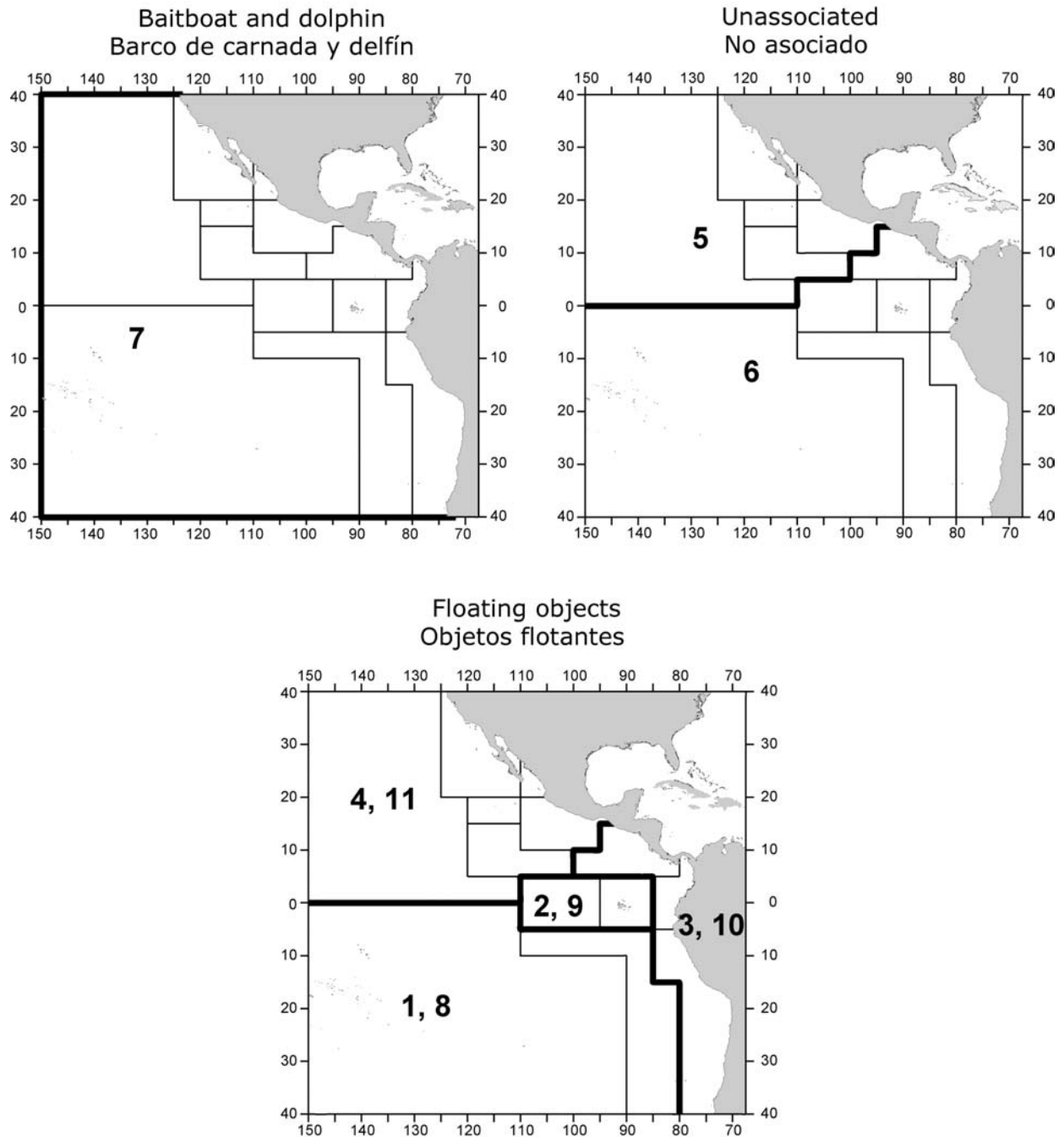


FIGURE 2.1. Spatial extents of the fisheries defined by the IATTC staff for the stock assessment of skipjack tuna in the EPO. The thin lines indicate the boundaries of 13 length-frequency sampling areas, the bold lines the boundaries of each fishery defined for the stock assessment, and the bold numbers the fisheries to which the latter boundaries apply. The fisheries are described in Table 2.1.

FIGURA 2.1. Extensión espacial de las pesquerías definidas por el personal de la CIAT para la evaluación del atún barrilete en el OPO. Las líneas delgadas indican los límites de 13 zonas de muestreo de frecuencia de tallas, las líneas gruesas los límites de cada pesquería definida para la evaluación del stock, y los números en negritas las pesquerías correspondientes a estos últimos límites. En la Tabla 2.1 se describen las pesquerías.

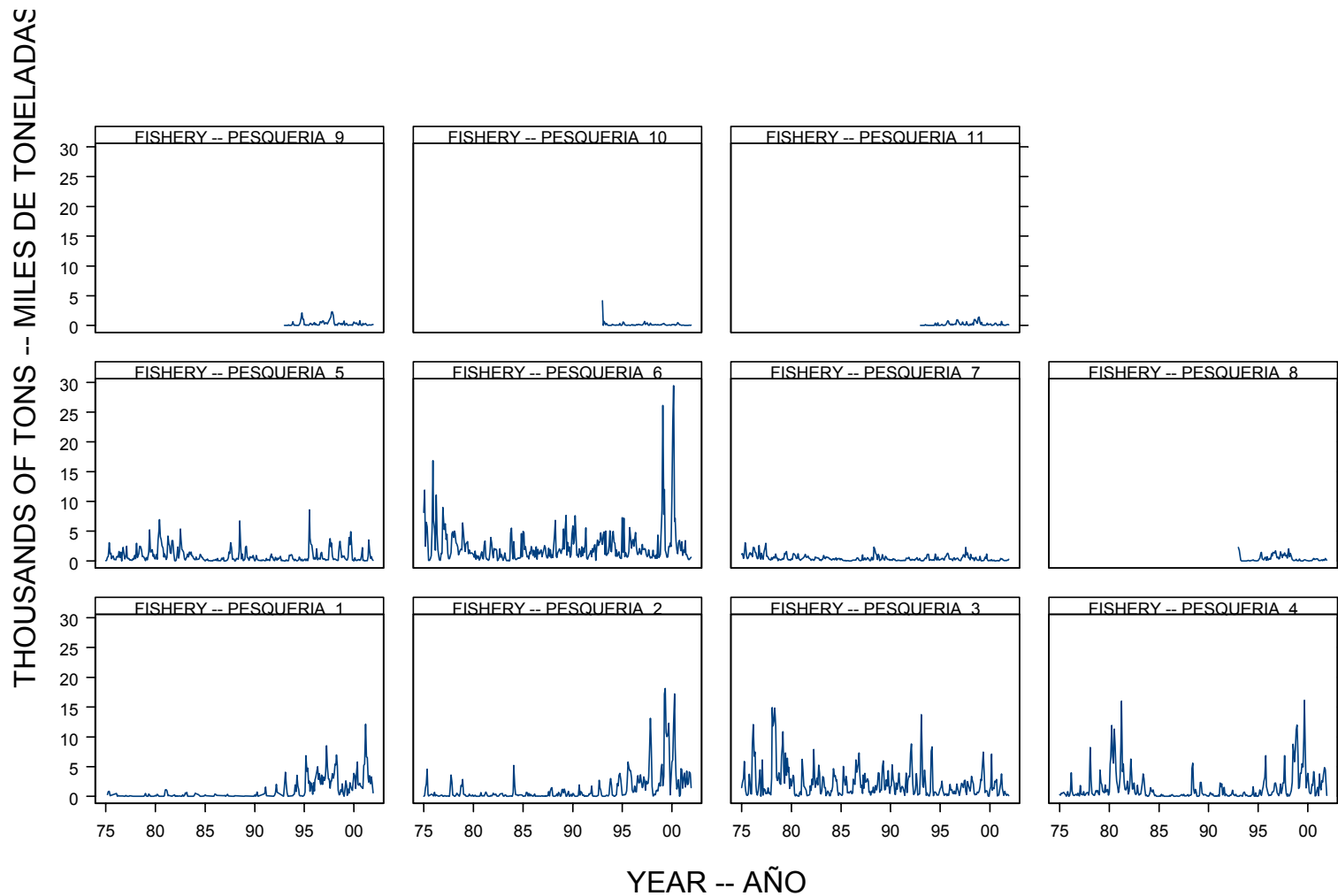


FIGURE 2.2. Catches by the fisheries defined for the stock assessment of skipjack tuna in the EPO (Table 2.1). Since the data were analyzed on a monthly basis, there are twelve observations of catch for each year.

FIGURA 2.2. Capturas de las pesquerías definidas para la evaluación del stock de atún barrilete en el OPO (Tabla 2.1). Ya que se analizaron los datos por mes, hay doce observaciones de captura para cada año.

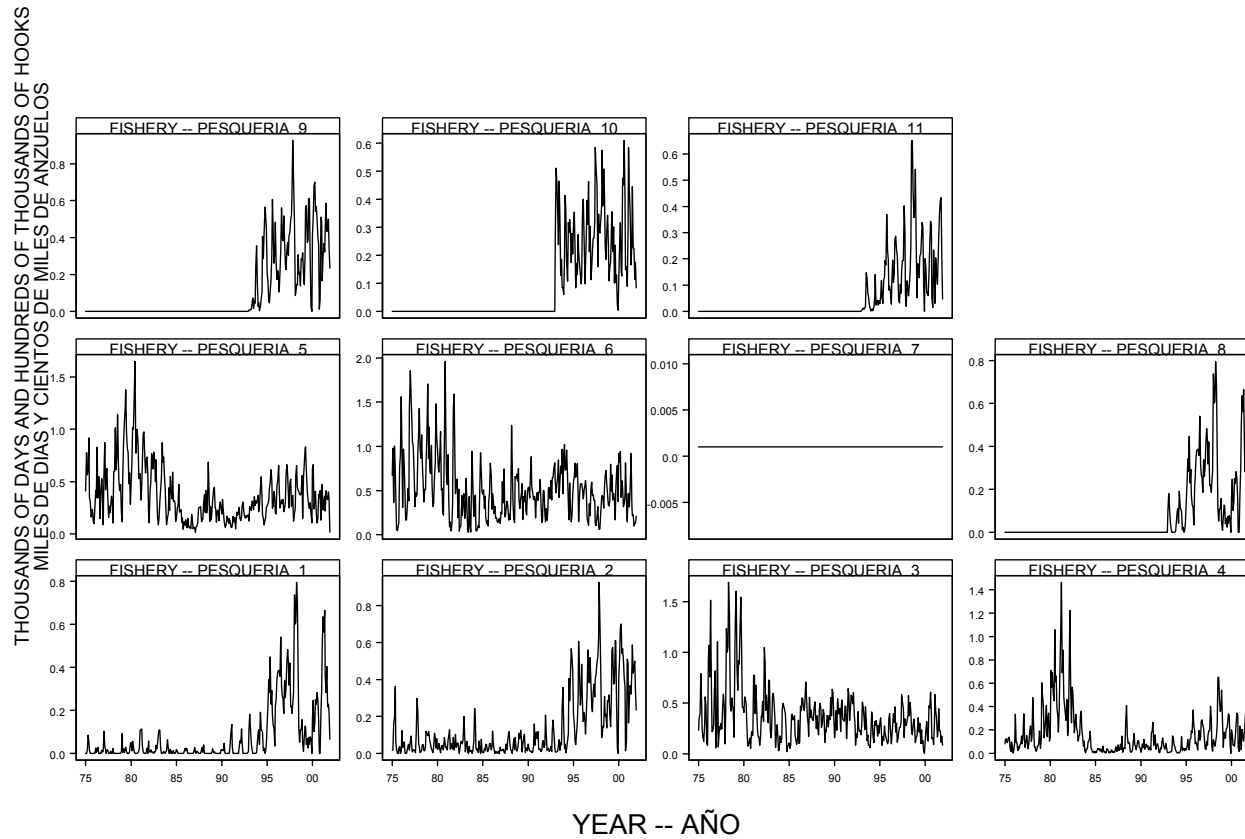


FIGURE 2.3. Fishing effort exerted by the fisheries defined for the stock assessment of skipjack tuna in the EPO (Table 2.1). Since the data were summarized on a monthly basis, there are twelve observations of effort for each year. The effort is in days fished. Constant effort was assumed for Fishery 7.

FIGURA 2.3. Esfuerzo de pesca ejercido por las pesquerías definidas para la evaluación del stock de atún barrilete en el OPO (Tabla 2.1). Ya que se analizaron los datos por mes, hay doce observaciones de esfuerzo para cada año. Se expresa el esfuerzo en días de pesca. Se supuso un esfuerzo constante para la Pesquería 7.

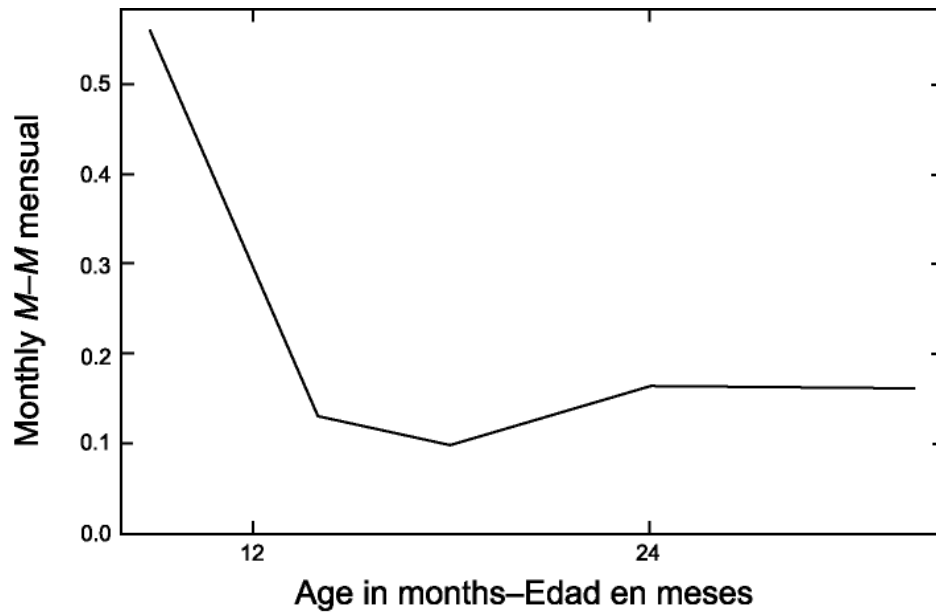


FIGURE 3.1. Natural mortality (M) rates, at monthly intervals, used for the assessment of skipjack tuna in the EPO.

FIGURA 3.1. Tasas de mortalidad natural (M), a intervalos mensuales, usadas para la evaluación del atún barrilete en el OPO.

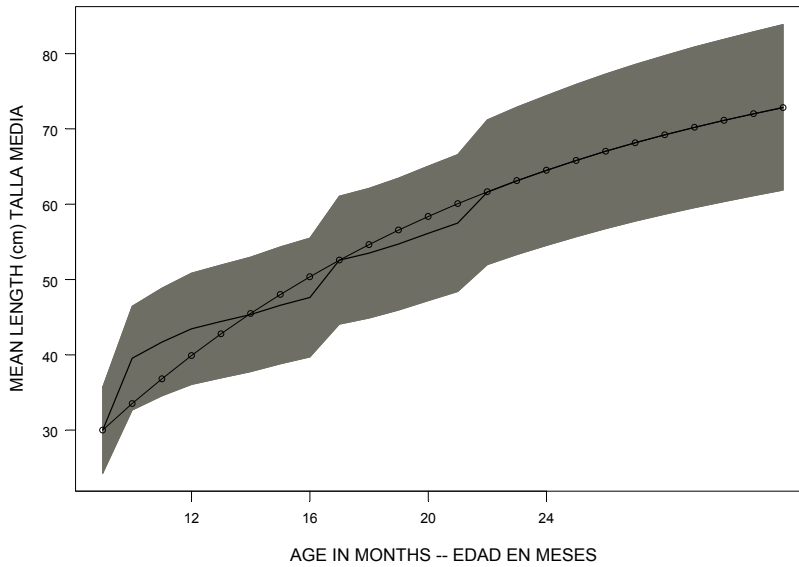


FIGURE 3.2a. Growth curve used for the nonmonotonic selectivity assessment of skipjack tuna in the EPO. The shaded area represents the variance of length-at-age (plus and minus two standard deviations) and the smooth curve is the prior.

FIGURA 3.2a. Curva de crecimiento usada para la evaluación del atún barrilete en el OPO. La zona sombreada representa la varianza de la talla a edad (más y menos dos desviaciones estandar).

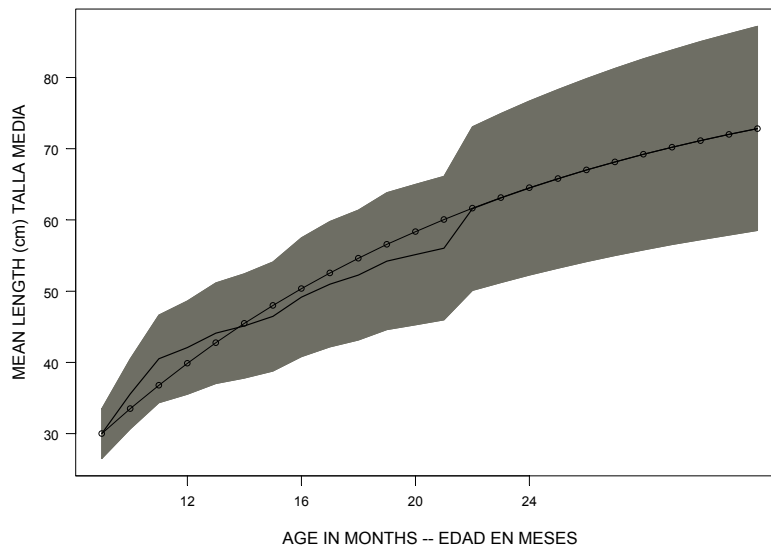


FIGURE 3.2b. Growth curve used for the monotonic selectivity assessment of skipjack tuna in the EPO. The shaded area represents the variance of length-at-age (plus and minus two standard deviations) and the smooth curve is the prior.

FIGURA 3.2b. Curva de crecimiento usada para la evaluación del atún barrilete en el OPO. La zona sombreada representa la varianza de la talla a edad (más y menos dos desviaciones estándar).

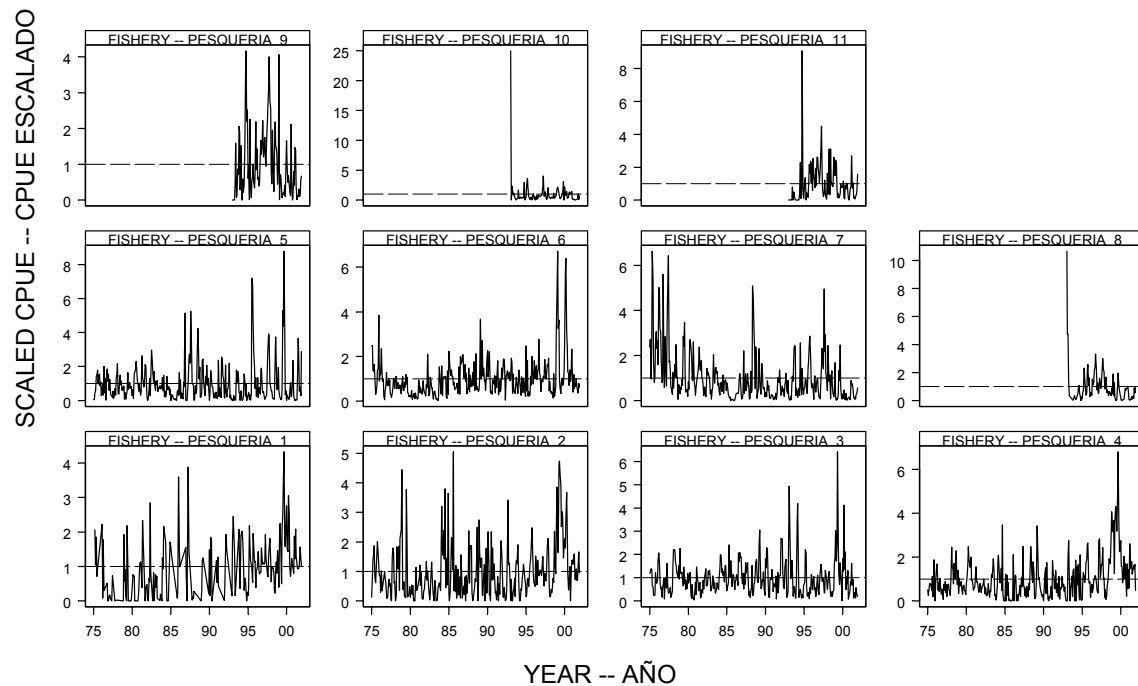


FIGURE 4.1. CPUEs for the fisheries defined for the stock assessment of skipjack tuna in the EPO (Table 2.1). Since the data were summarized on a monthly basis, there are twelve observations of CPUE for each year. The CPUEs are in kilograms per day fished. The data are adjusted so that the mean of each time series is equal to 1.0. It should be noted that the vertical scales of the panels are different.

FIGURA 4.1. CPUE logradas por las pesquerías definidas para la evaluación del stock de atún barrilete en el OPO (Tabla 2.1). Ya que se resumieron los datos por mes, hay doce observaciones de CPUE para cada año. Se expresan las CPUE en kilogramos por día de pesca. Se ajustaron los datos para que el promedio de cada serie de tiempo equivalga a 1,0. Nótese que las escalas verticales de los recuadros son diferentes.

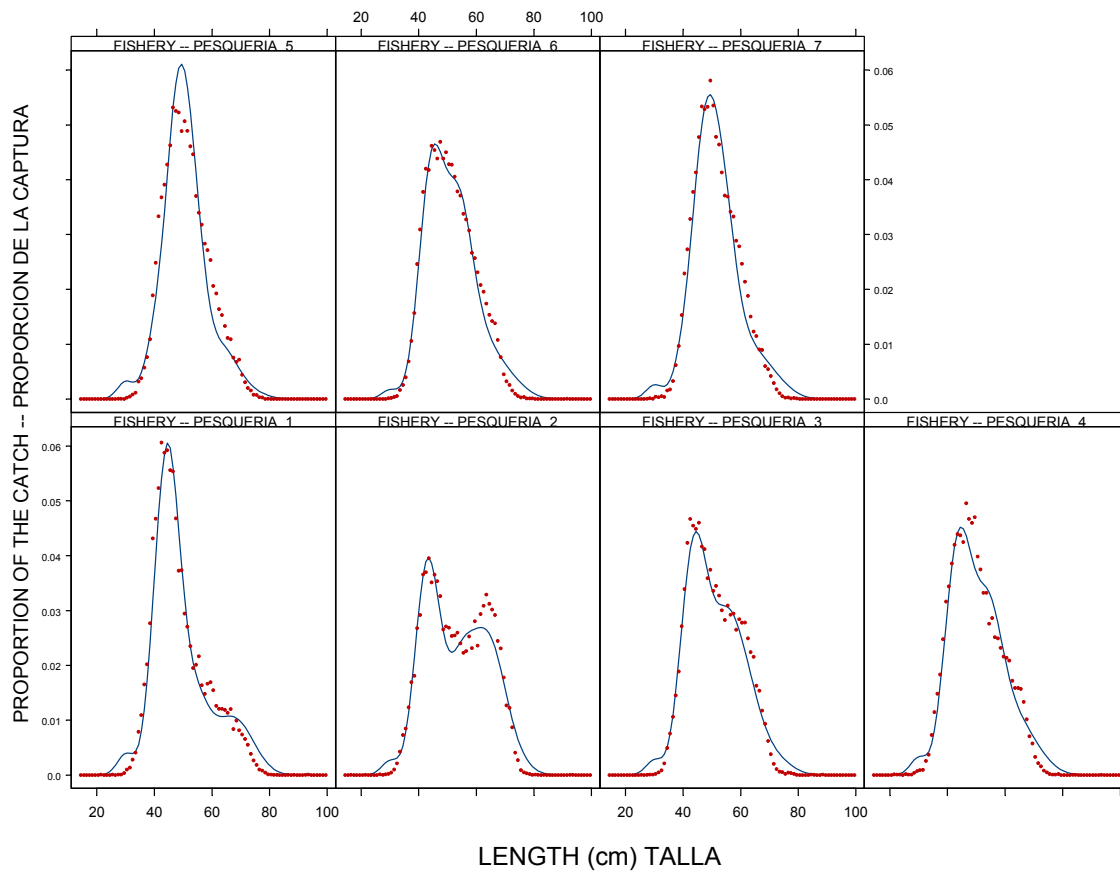


FIGURE 4.2a. Average observed (solid circles) and predicted (curves) size compositions of the catches taken by the fisheries for the nonmonotonic selectivity assessment.

FIGURA 4.2a. Composición media por tamaño observada (círculos sólidos) y predicha (curvas) de las capturas realizadas por las pesquerías definidas para la Evaluación 1.

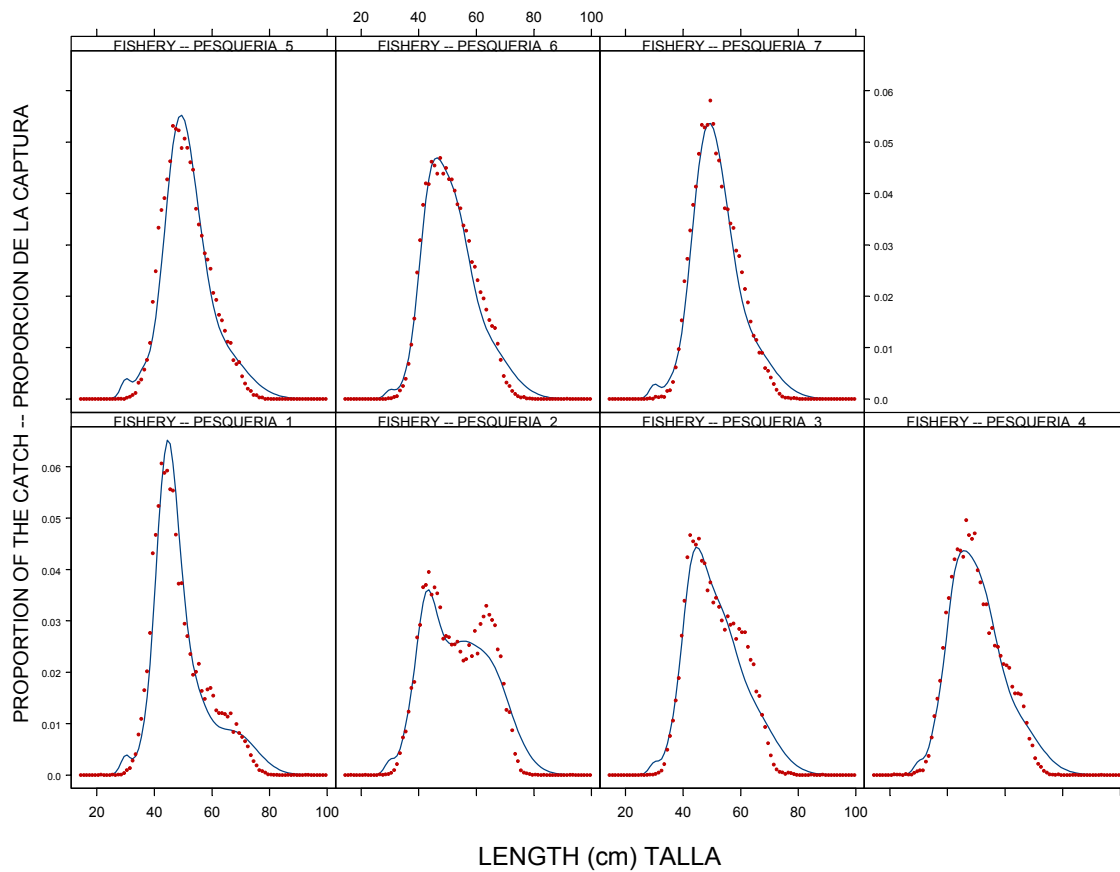


FIGURE 4.2b. Average observed (solid circles) and predicted (curves) size compositions of the catches taken by the fisheries for the monotonic selectivity assessment.

FIGURA 4.2b. Composición media por tamaño observada (círculos sólidos) y predicha (curvas) de las capturas realizadas por las pesquerías definidas para la Evaluación 2.

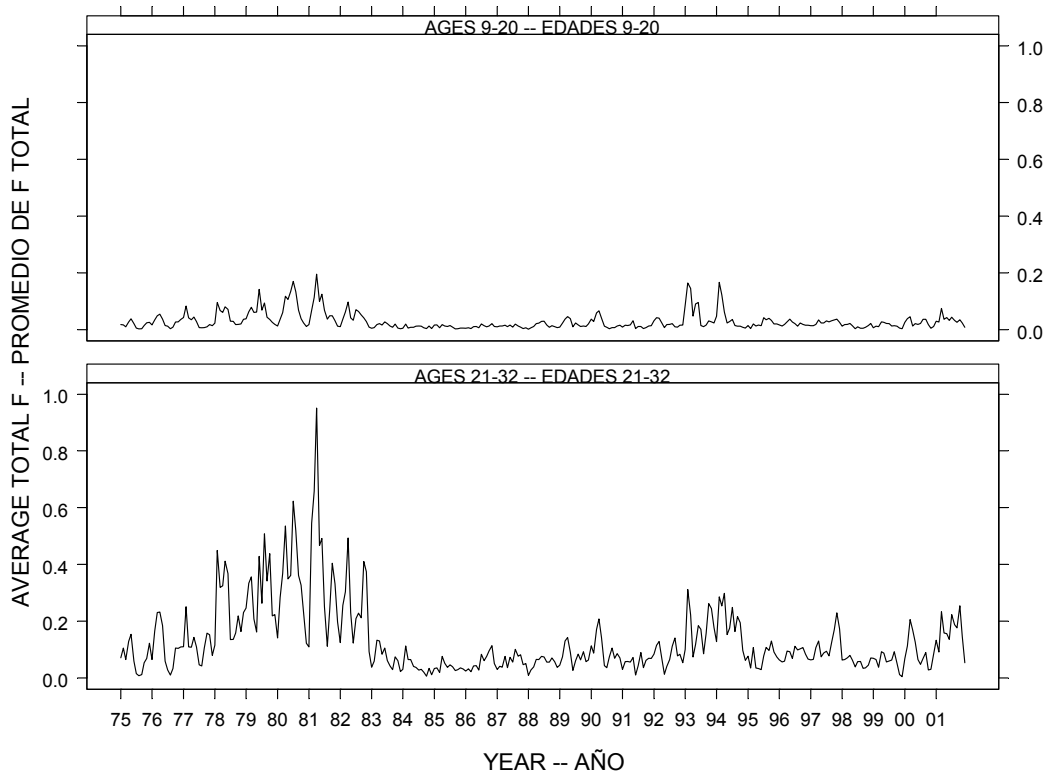


FIGURE 4.3a. Time series of average total monthly fishing mortality of skipjack tuna that have been recruited to the fisheries of the EPO, from the nonmonotonic selectivity assessment. Each panel illustrates an average of twelve monthly fishing mortality vectors that affected the fish that were as old as the range of ages indicated in the title of each panel. For example, the trend illustrated in the upper panel is an average of the fishing mortalities that affected fish that were 9-20 months old.

FIGURA 4.3a. Series de tiempo de la mortalidad por pesca mensual total media de atún barrilete reclutado a las pesquerías del OPO, de la Evaluación 1. Cada recuadro ilustra un promedio de doce vectores mensuales de mortalidad por pesca que afectaron los peces de la edad indicada en el título de cada recuadro. Por ejemplo, la tendencia ilustrada en el recuadro superior es un promedio de las mortalidades por pesca que afectaron a los peces de entre 9 y 20 meses de edad.

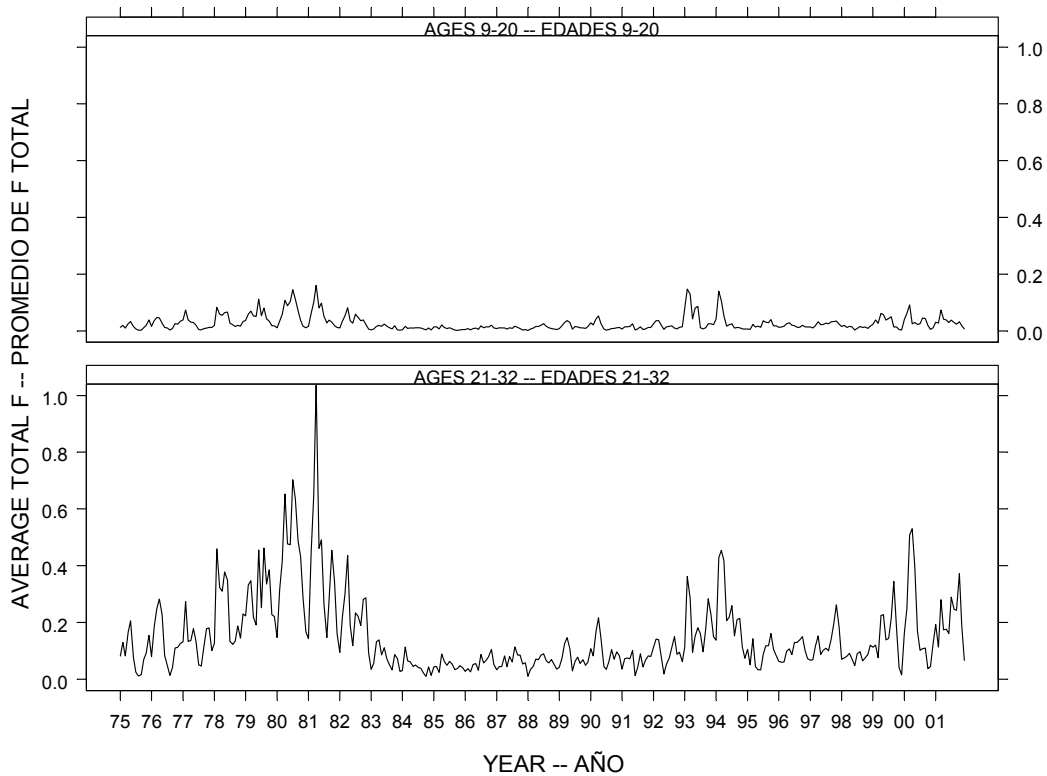


FIGURE 4.3b. Time series of average total monthly fishing mortality of skipjack tuna that have been recruited to the fisheries of the EPO, from the monotonic selectivity assessment. Each panel illustrates an average of twelve monthly fishing mortality vectors that affected the fish that were as old as the range of ages indicated in the title of each panel. For example, the trend illustrated in the upper panel is an average of the fishing mortalities that affected fish that were 9-20 months old.

FIGURA 4.3b. Series de tiempo de la mortalidad por pesca mensual total media de atún barrilete reclutado a las pesquerías del OPO, de la Evaluación 2. Cada recuadro ilustra un promedio de doce vectores mensuales de mortalidad por pesca que afectaron los peces de la edad indicada en el título de cada recuadro. Por ejemplo, la tendencia ilustrada en el recuadro superior es un promedio de las mortalidades por pesca que afectaron a los peces de entre 9 y 20 meses de edad.

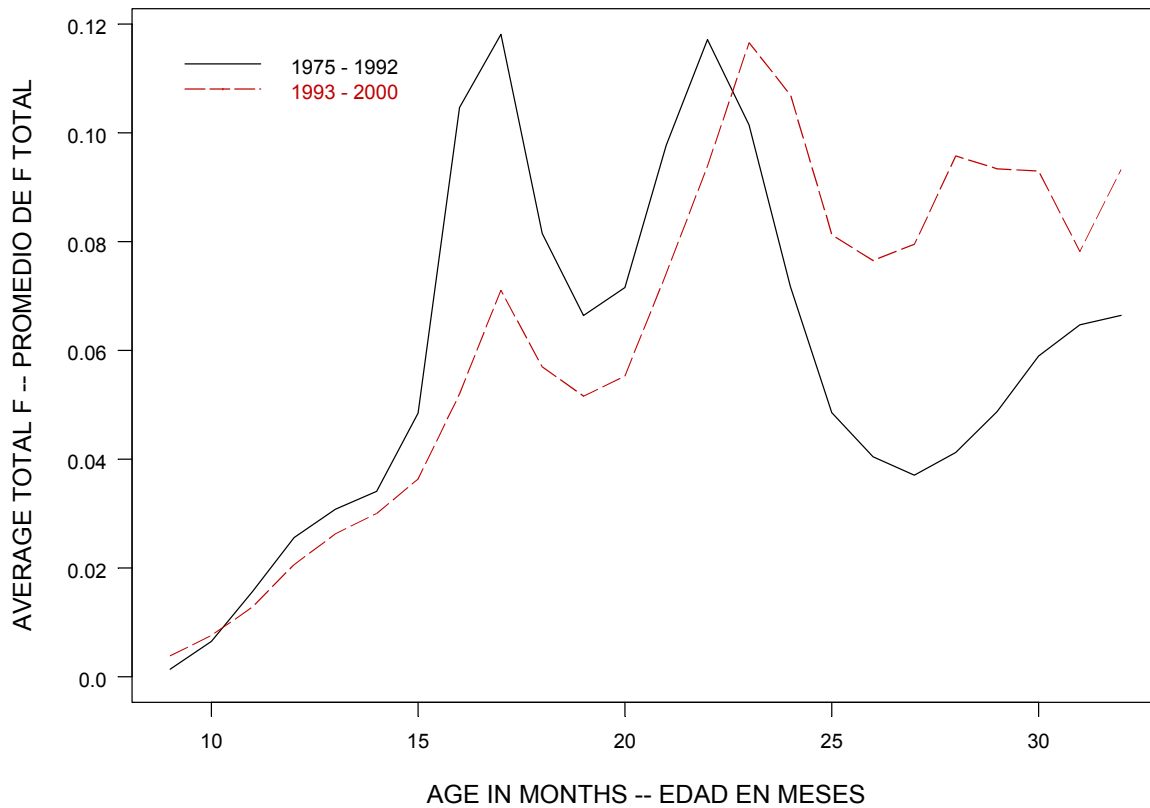


FIGURE 4.3c. Average age-specific fishing mortality of skipjack tuna that have been recruited to the fisheries of the EPO, from the nonmonotonic selectivity assessment. The estimates are separated into before and after the expansion of the floating object fisheries.

FIGURA 4.3c. Mortalidad por pesca media por edad de atún barrilete reclutado a las pesquerías del OPO, de la Evaluación 1. Se separan las estimaciones en antes y después de la expansión de las pesquerías de objetos flotantes.

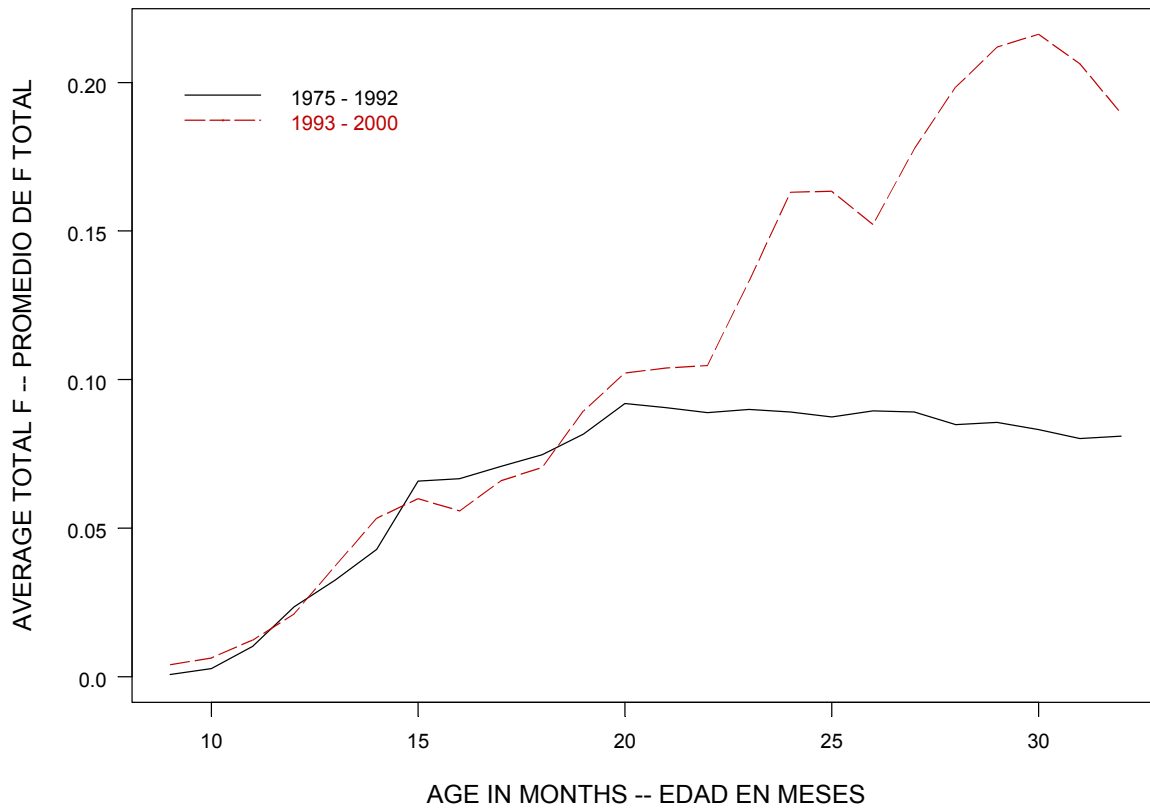


FIGURE 4.3d. Average age-specific fishing mortality of skipjack tuna that have been recruited to the fisheries of the EPO, from the monotonic selectivity assessment. The estimates are separated into before and after the expansion of the floating object fisheries.

FIGURA 4.3d. Mortalidad por pesca media por edad de atún barrilete reclutado a las pesquerías del OPO, de la Evaluación 2. Se separan las estimaciones en antes y después de la expansión de las pesquerías de objetos flotantes.

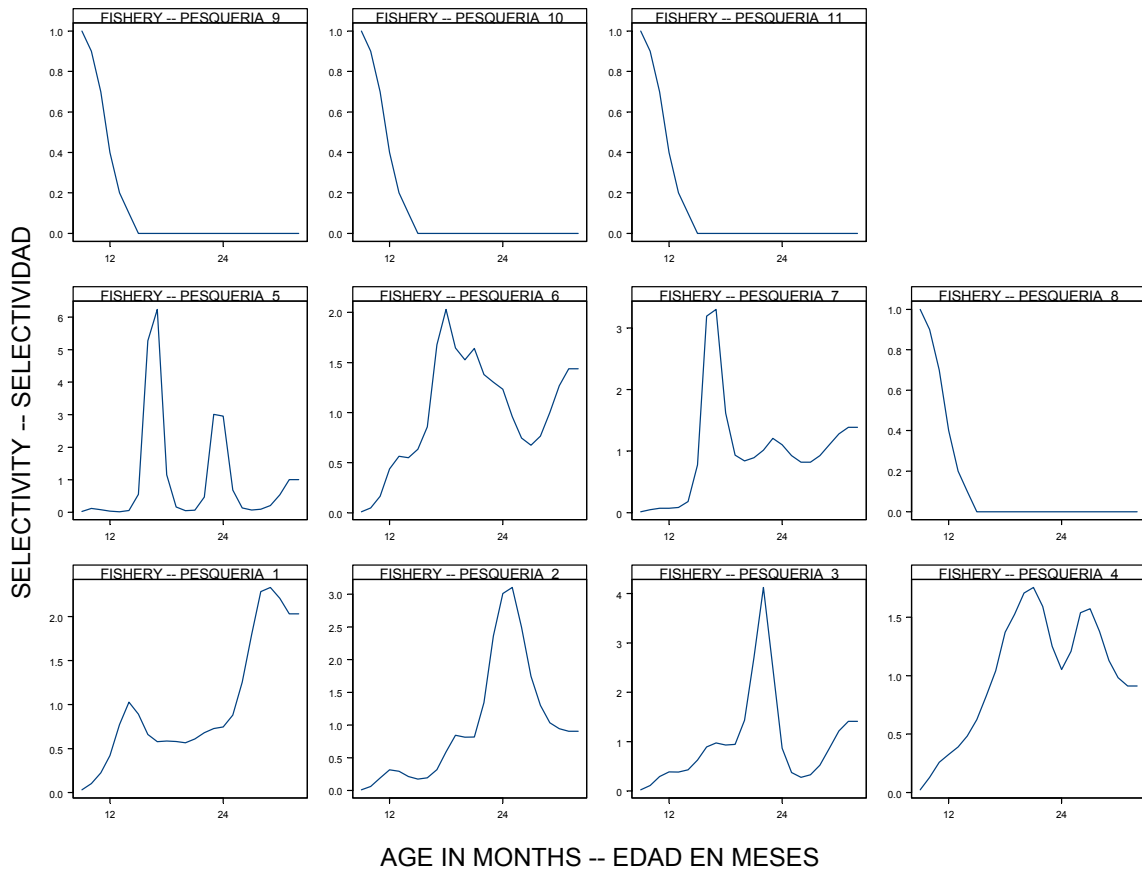


FIGURE 4.4a. Selectivity curves for the 11 fisheries that take skipjack tuna in the EPO, from the nonmonotonic selectivity assessment. The curves for Fisheries 1-7 were estimated with the A-SCALA method. The curves for Fisheries 8-11 are based on assumptions.

FIGURA 4.4a. Curvas de selectividad para las 11 pesquerías que capturan atún barrilete en el OPO, de la Evaluación 1. Se estimaron las curvas de las Pesquerías 1-7 con el método A-SCALA; las de la Pesquerías 8-11 se basan en supuestos.

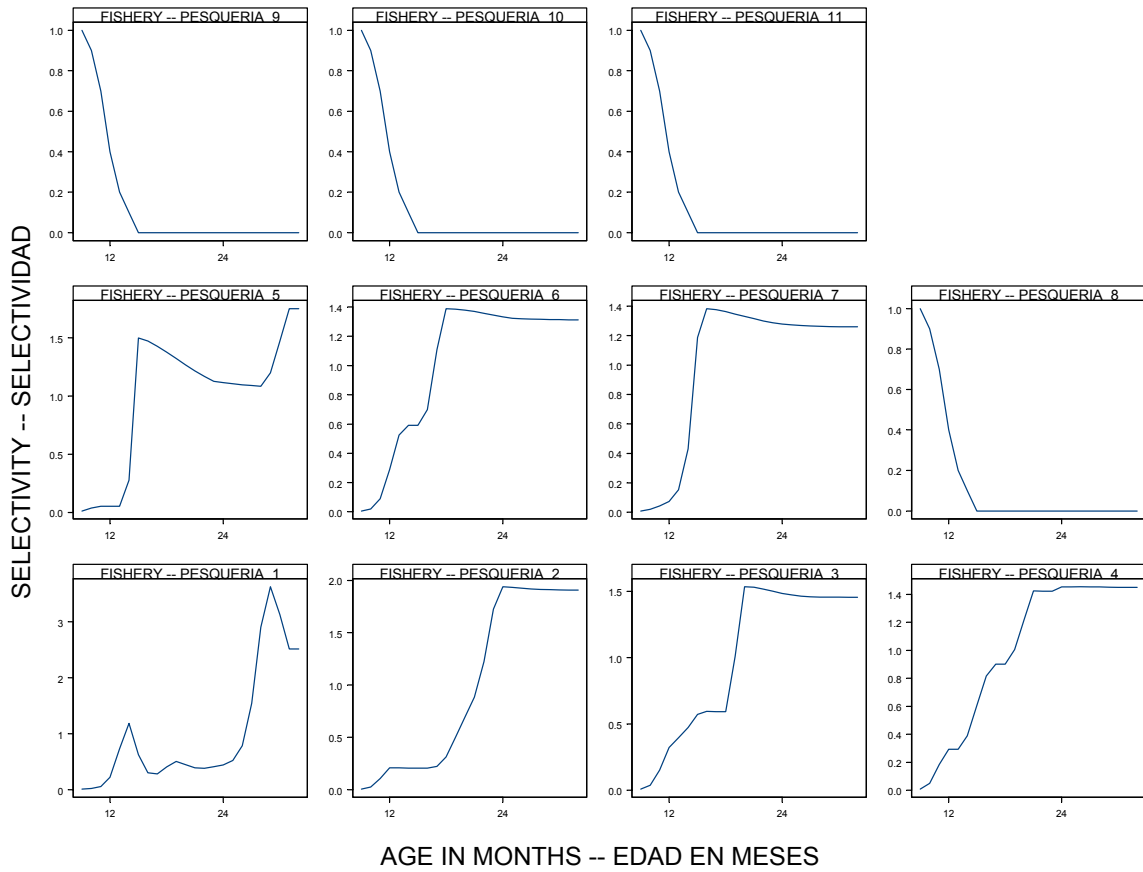


FIGURE 4.4b. Selectivity curves for the 11 fisheries that take skipjack tuna in the EPO, from the monotonic selectivity assessment. The curves for Fisheries 1-7 were estimated with the A-SCALA method. The curves for Fisheries 8-11 are based on assumptions.

FIGURA 4.4b. Curvas de selectividad para las 11 pesquerías que capturan atún barrilete en el OPO, de la Evaluación 2. Se estimaron las curvas de las Pesquerías 1-7 con el método A-SCALA; las de la Pesquerías 8-11 se basan en supuestos.

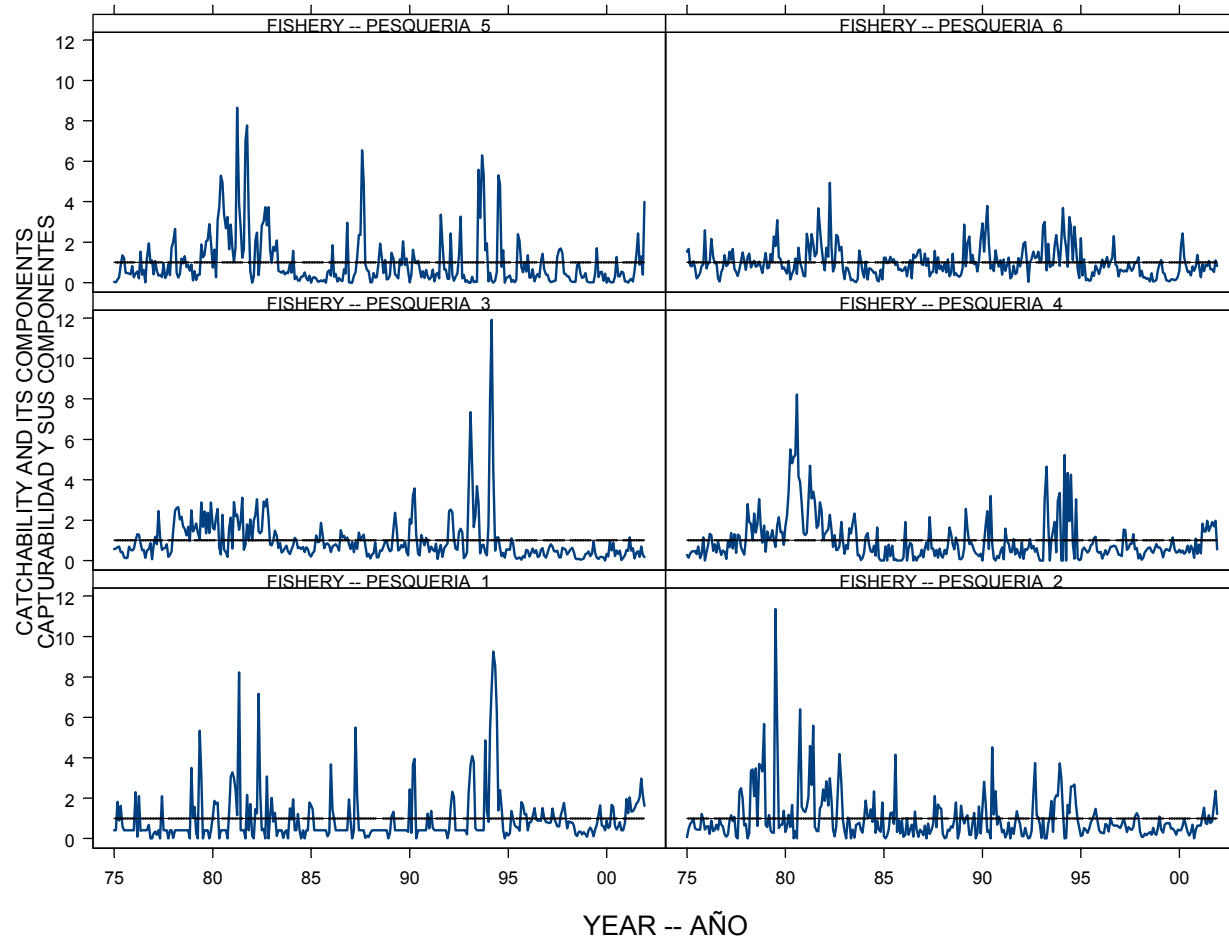


FIGURE 4.5a. Trends in catchability (q) for the 6 main fisheries that take skipjack tuna in the EPO, from the nonmonotonic selectivity assessment.
FIGURA 4.5a. Tendencias en capturabilidad (q) para las 11 pesquerías que capturan atún barrilete en el OPO, de la Evaluación 1.

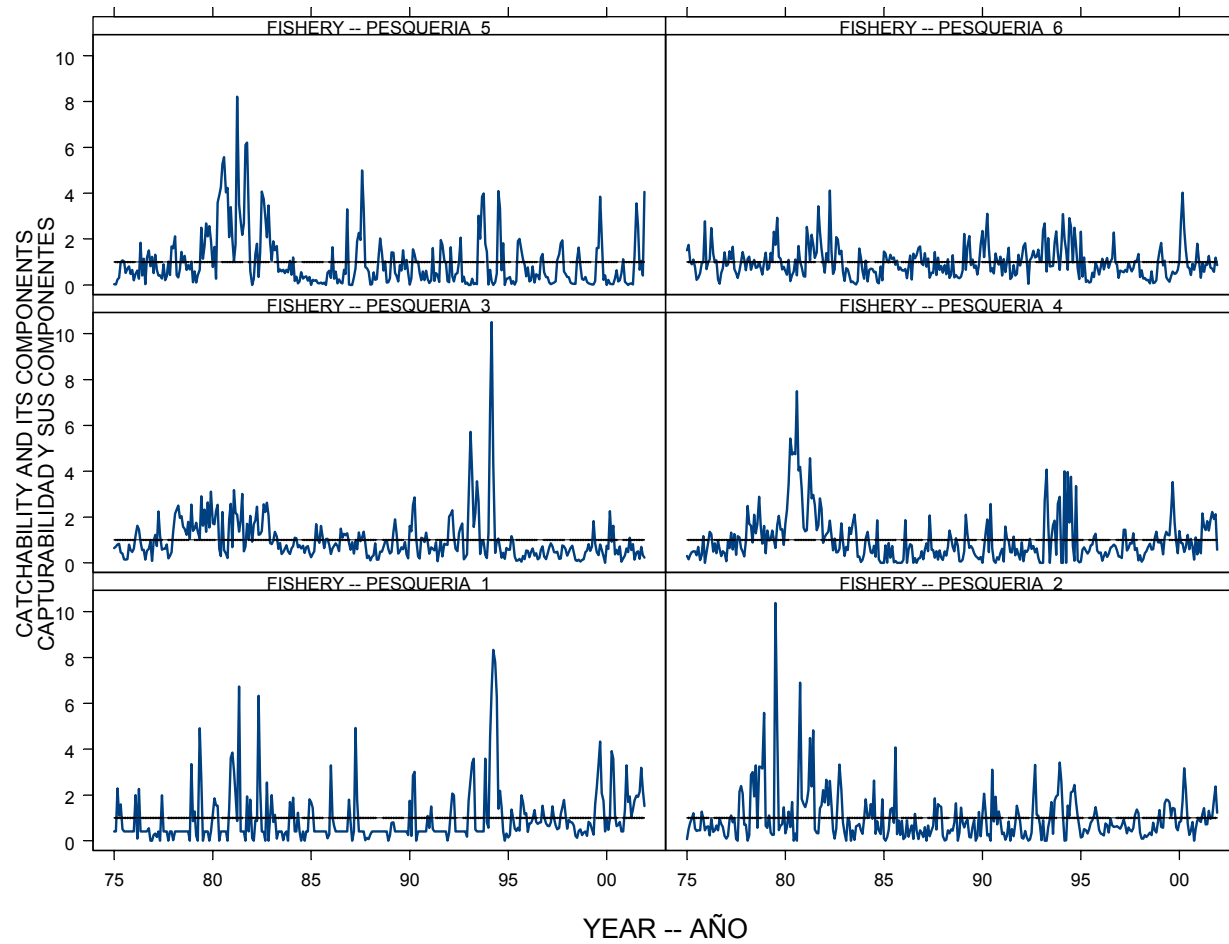


FIGURE 4.5b. Trends in catchability (q) for the 6 main fisheries that take skipjack tuna in the EPO, from the monotonic selectivity assessment.
FIGURA 4.5b. Tendencias en capturabilidad (q) para las 11 pesquerías que capturan atún barrilete en el OPO, de la Evaluación 2.

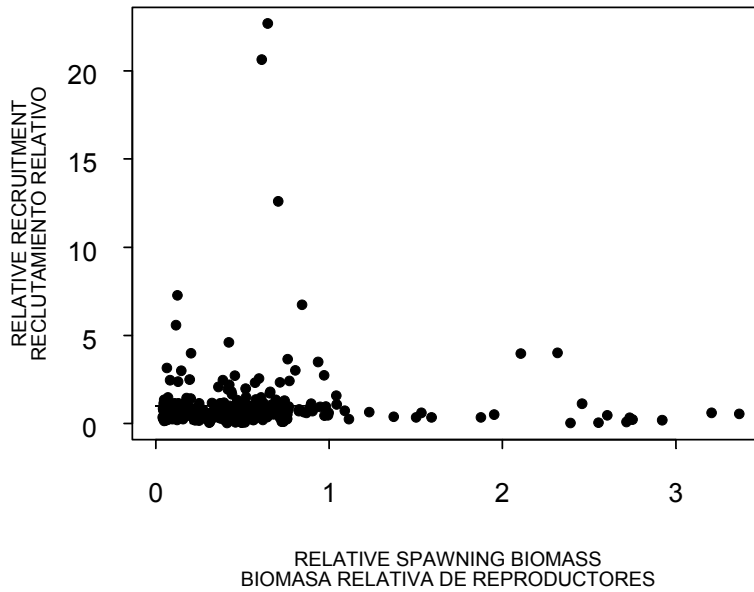


FIGURE 4.6a. Estimated relationships between recruitment of skipjack tuna and spawning biomass from the nonmonotonic selectivity assessment. The recruitment is scaled so that the average recruitment is equal to 1.0. The spawning biomass is scaled so that the average unexploited spawning biomass is equal to 1.0.

FIGURA 4.6a. Relaciones estimadas entre el reclutamiento de atún barrilete y las anomalías de las TSM en el momento supuesto de cría (recuadro superior) y entre reclutamiento y biomasa reproductora (recuadro inferior), de la Evaluación 1. Se escala el reclutamiento para que el reclutamiento medio equivalga a 1,0, y la biomasa reproductora para que la biomasa reproductora no explotada media equivalga a 1,0.

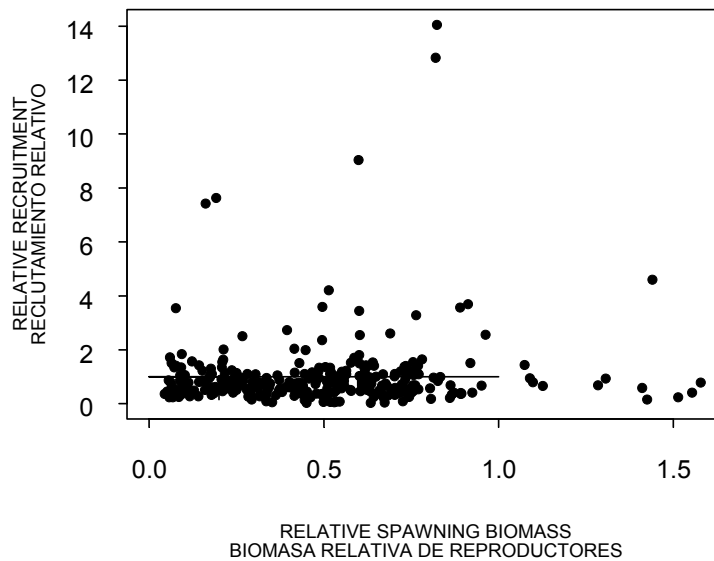


FIGURE 4.6b. Estimated relationships between recruitment of skipjack tuna and spawning biomass from the monotonic selectivity assessment. The recruitment is scaled so that the average recruitment is equal to 1.0. The spawning biomass is scaled so that the average unexploited spawning biomass is equal to 1.0.

FIGURA 4.6b. Relaciones estimadas entre el reclutamiento de atún barrilete y las anomalías de las TSM en el momento supuesto de cría (recuadro superior) y entre el reclutamiento y la biomasa reproductora (recuadro inferior), de la Evaluación 2. Se escala el reclutamiento para que el reclutamiento medio equivalga a 1,0, y la biomasa reproductora para que la biomasa reproductora no explotada media equivalga a 1,0.

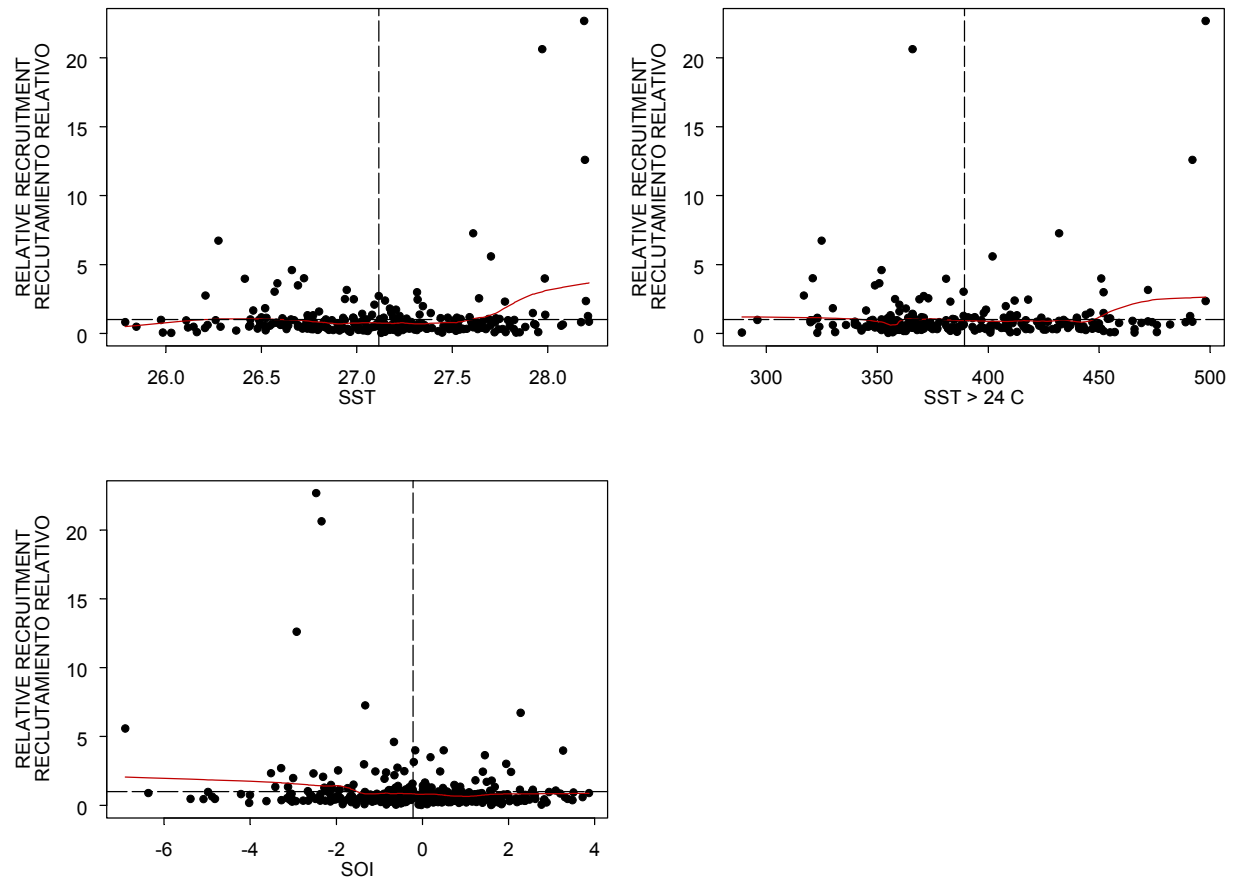


FIGURE 4.6c. Estimated relationships between recruitment of skipjack tuna and SST anomalies at the assumed time of hatching for the nonmonotonic selectivity assessment. The recruitment is scaled so that the average recruitment is equal to 1.0. The dashed reference lines indicate the averages. The solid line is a loess smoother.

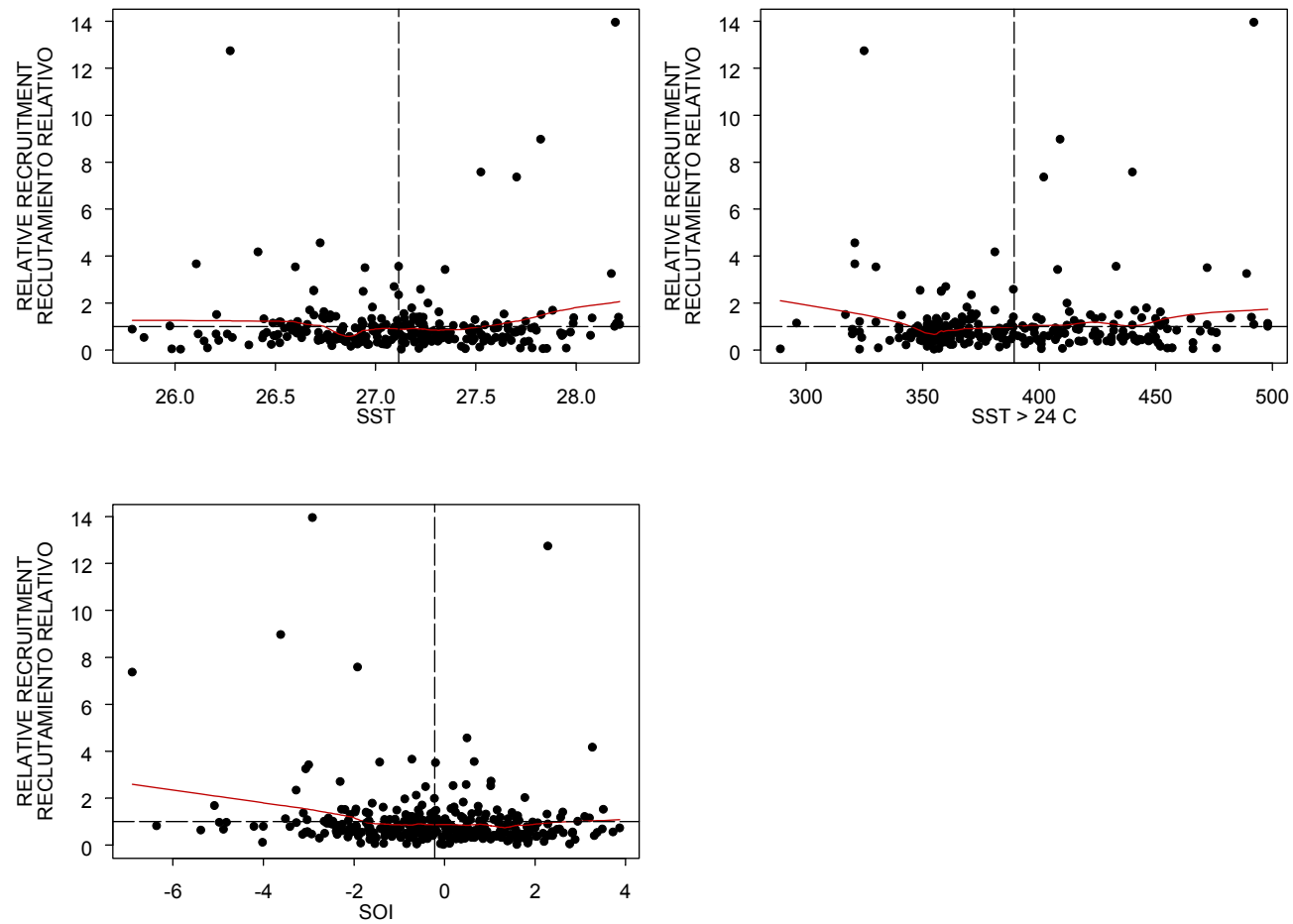


FIGURE 4.6d. Estimated relationships between recruitment of skipjack tuna and SST anomalies at the assumed time of hatching for the monotonic selectivity assessment. The recruitment is scaled so that the average recruitment is equal to 1.0. The dashed reference lines indicate the averages. The solid line is a lowess smoother.

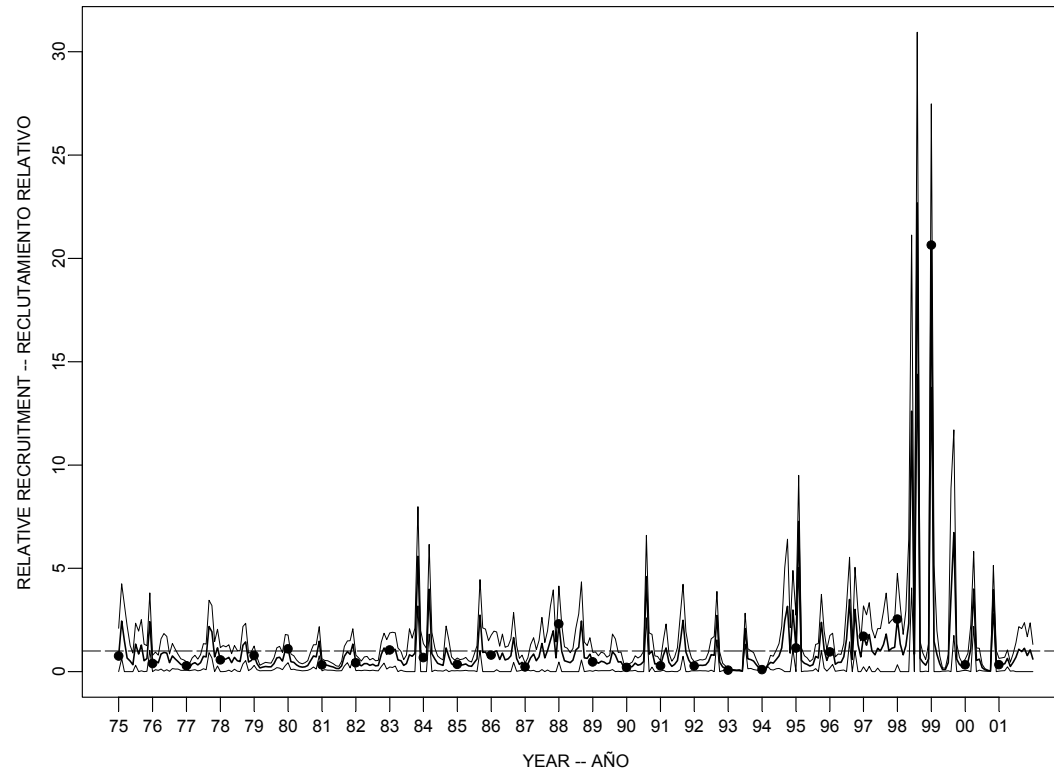


FIGURE 4.7a. Estimated recruitment of skipjack tuna to the fisheries of the EPO, from the nonmonotonic selectivity assessment. The estimates are scaled so that the average recruitment is equal to 1.0. The solid line illustrates the maximum likelihood estimates and the shaded area the 95% confidence intervals. The labels on the time axis are drawn at the start of each year, but, since the assessment model represents time on a monthly basis, there are twelve estimates of recruitment for each year.

FIGURA 4.7a. Reclutamiento estimado de atún barrilete a las pesquerías del OPO, de la Evaluación 1. Se escalan las estimaciones para que el reclutamiento medio equivalga a 1,0. La línea sólida ilustra las estimaciones de probabilidad máxima del reclutamiento, y la línea de trazos el índice ambiental. Se dibujan las leyendas en el eje de tiempo al principio de cada año, pero, ya que el modelo de evaluación representa el tiempo por meses, hay doce estimaciones de reclutamiento para cada año.

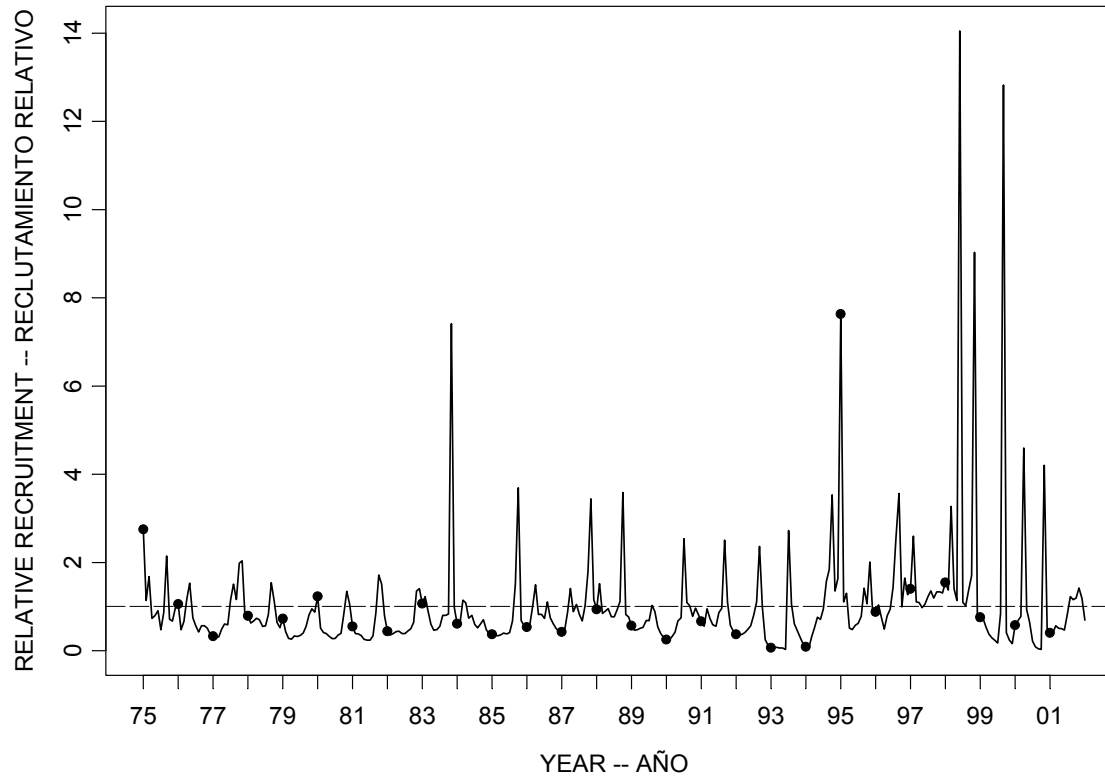


FIGURE 4.7b. Estimated recruitment of skipjack tuna to the fisheries of the EPO from the monotonic selectivity assessment. The estimates are scaled so that the average recruitment is equal to 1.0. The solid line illustrates the maximum likelihood estimates of recruitment and the shaded area the 95% confidence intervals. The labels on the time axis are drawn at the start of each year, but, since the assessment model represents time on a monthly basis, there are twelve estimates of recruitment for each year.

FIGURA 4.7b. Reclutamiento estimado de atún barrilete a las pesquerías del OPO, de la Evaluación 2. Se escalan las estimaciones para que el reclutamiento medio equivalga a 1,0. La línea sólida ilustra las estimaciones de probabilidad máxima del reclutamiento, y la línea de trazos el índice ambiental. Se dibujan las leyendas en el eje de tiempo al principio de cada año, pero, ya que el modelo de evaluación representa el tiempo por meses, hay doce estimaciones de reclutamiento para cada año.

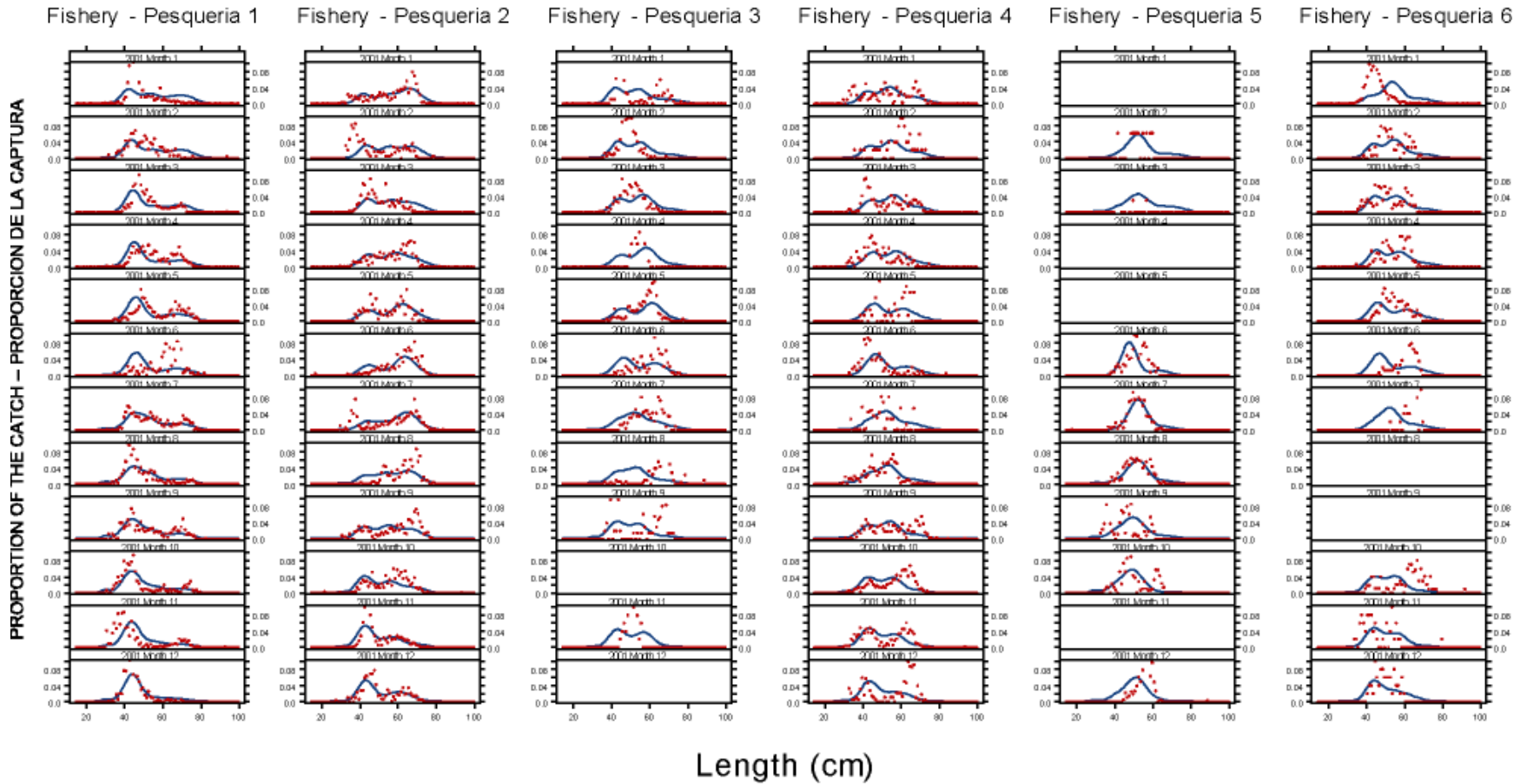


FIGURE 4.8a. Observed (filled circles) and predicted (curves) size compositions of the catches recently taken by the fisheries that take skipjack tuna in association with floating objects and unassociated schools, from the nonmonotonic selectivity assessment.

FIGURA 4.8a. Composiciones por tamaño observadas (círculos sólidos) y predichas (curvas) de las capturas recientes de las pesquerías que capturan atún barrilete en asociación con objetos flotantes y no asociado, de la Evaluación 1.

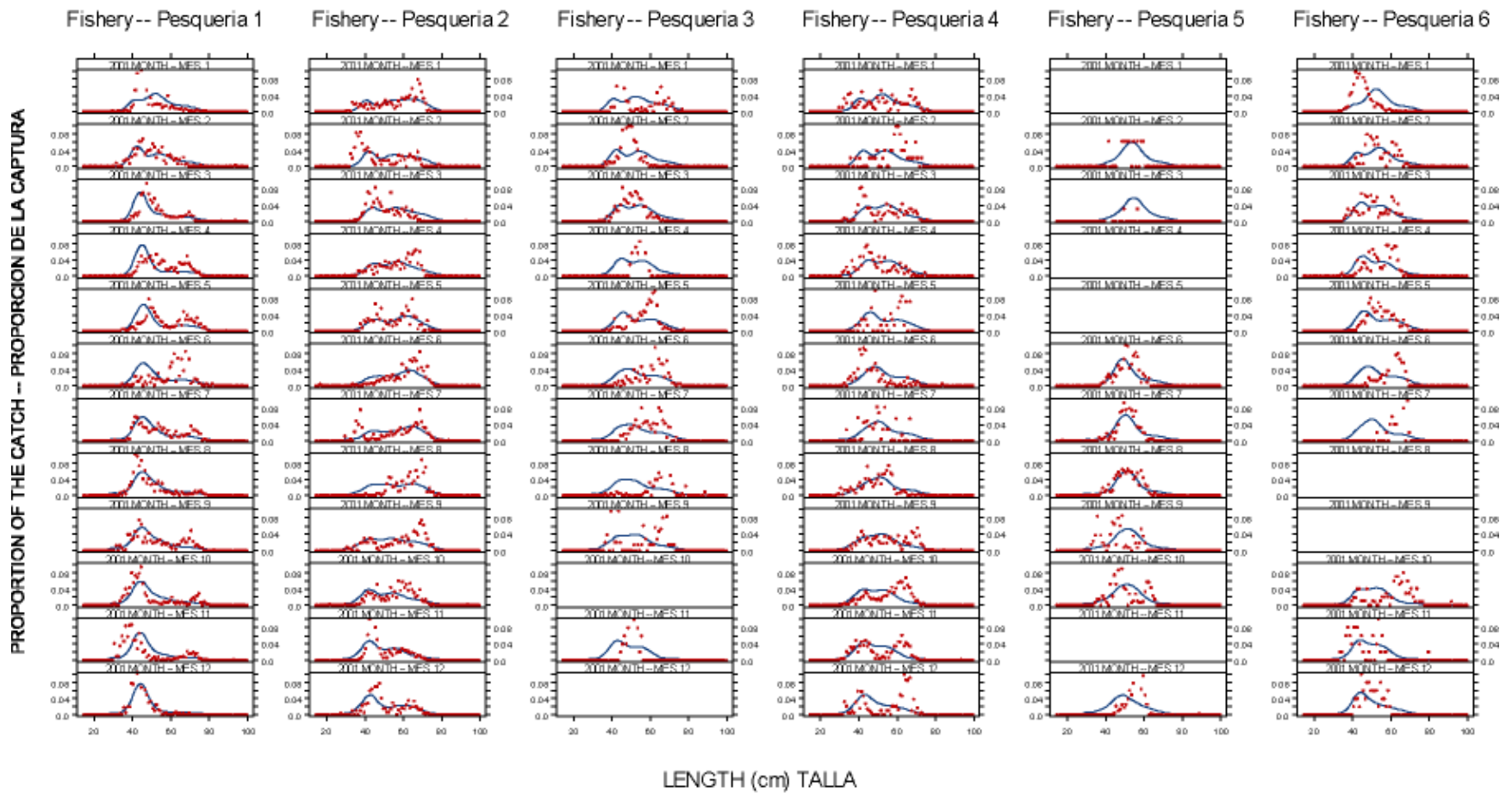
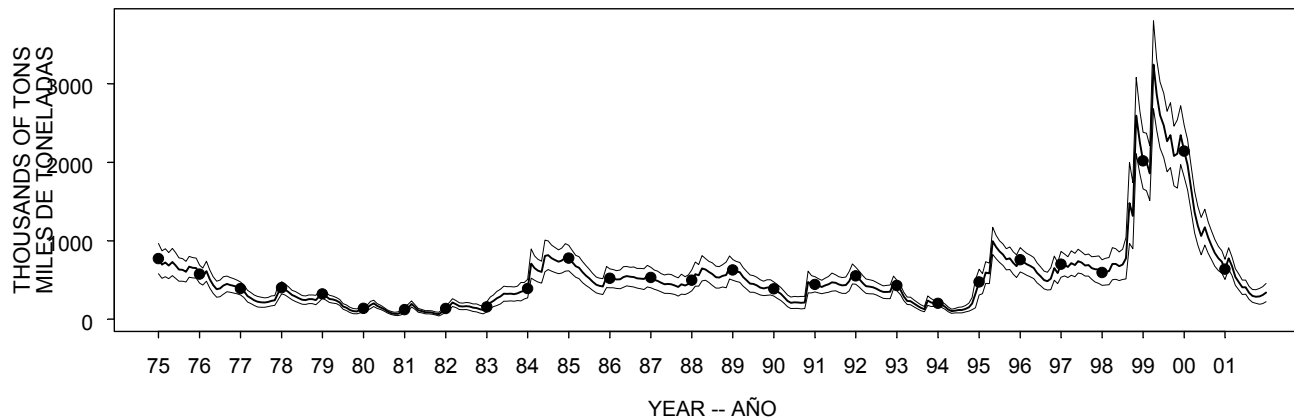


FIGURE 4.8b. Observed (filled circles) and predicted (curves) size compositions of the catches recently taken by the fisheries that take skipjack tuna in association with floating objects and unassociated schools, from the monotonic selectivity assessment.

FIGURA 4.8b. Composiciones por tamaño observadas (círculos sólidos) y predichas (curvas) de las capturas recientes de las pesquerías que capturan atún barrilete en asociación con objetos flotantes y no asociado, de la Evaluación 2.

BIOMASS OF FISH 1+ YEARS OLD -- BIOMASA DE PECES DE 1+ AÑOS DE EDAD



POPULATION FECUNDITY -- FECUNDIDAD DE LA POBLACION

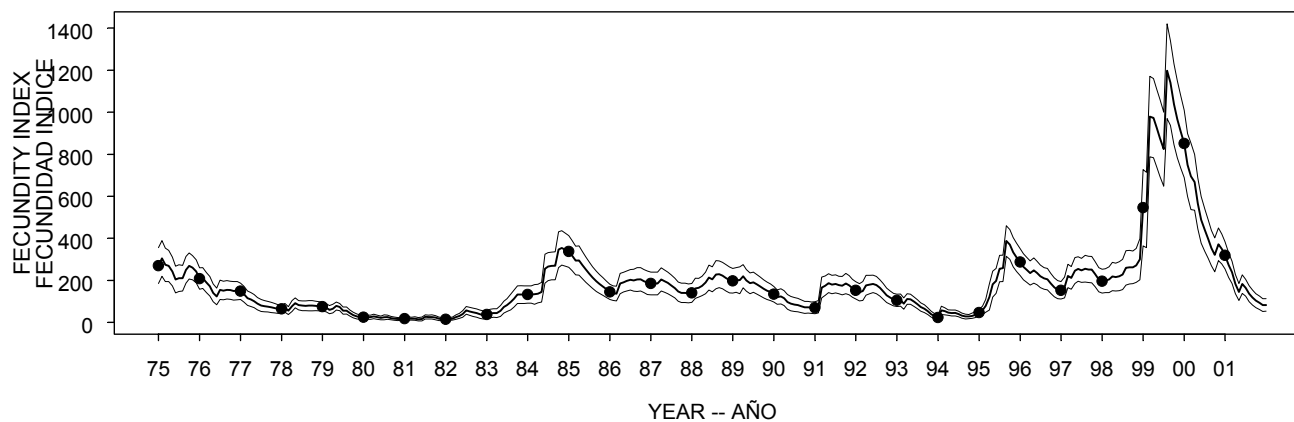
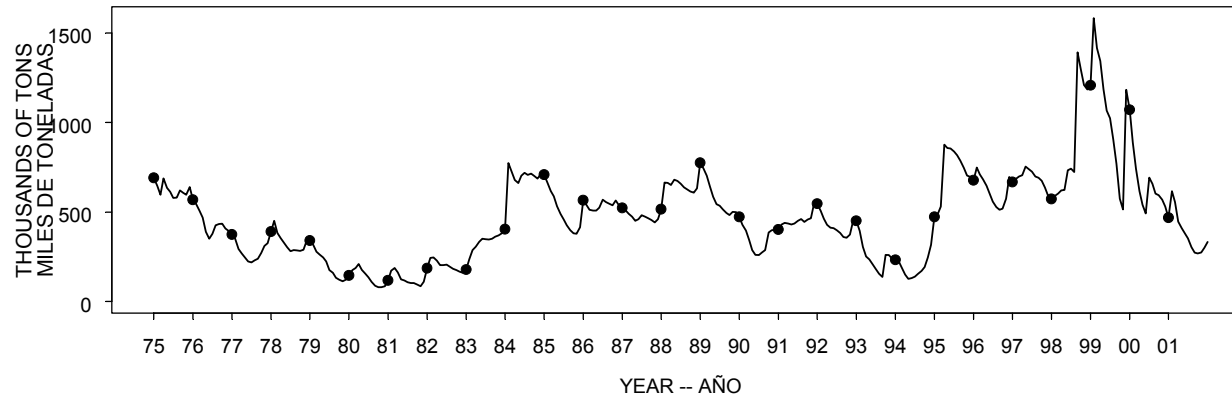


FIGURE 4.9a. Estimated biomass of skipjack tuna in the EPO from the nonmonotonic selectivity assessment. Since the assessment model represents time on a monthly basis, there are twelve estimates of biomass for each year.

FIGURA 4.9a. Biomasa estimada de atún barrilete en el OPO. Ya que el modelo de evaluación representa el tiempo por meses, hay doce estimaciones de biomasa para cada año.

BIOMASS OF FISH 1+ YEARS OLD -- BIOMASA DE PECES DE 1+ AÑOS DE EDAD



POPULATION FECUNDITY -- FECUNDIDAD DE LA POBLACION

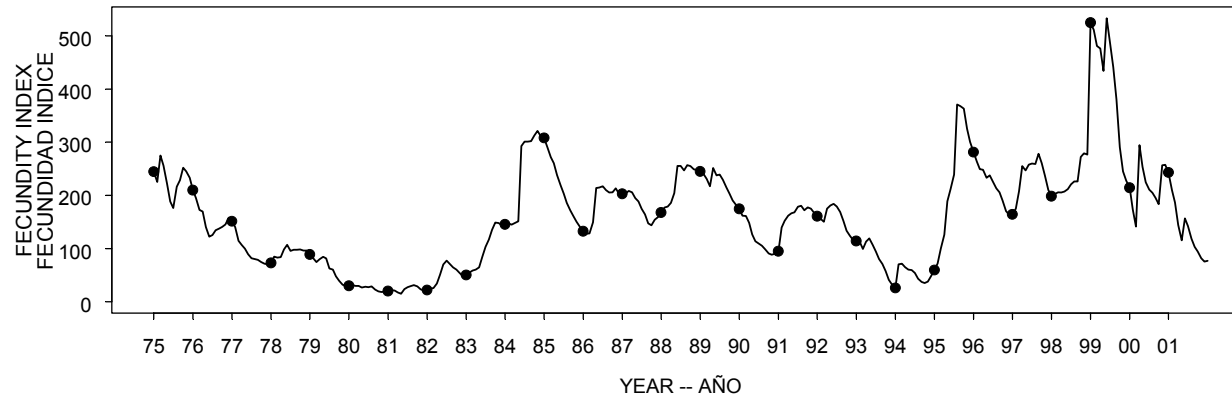


FIGURE 4.9b. Estimated biomass of skipjack tuna in the EPO from the monotonic selectivity assessment. Since the assessment model represents time on a monthly basis, there are twelve estimates of biomass for each year.

FIGURA 4.9b. Biomasa estimada de atún barrilete en el OPO. Ya que el modelo de evaluación representa el tiempo por meses, hay doce estimaciones de biomasa para cada año.

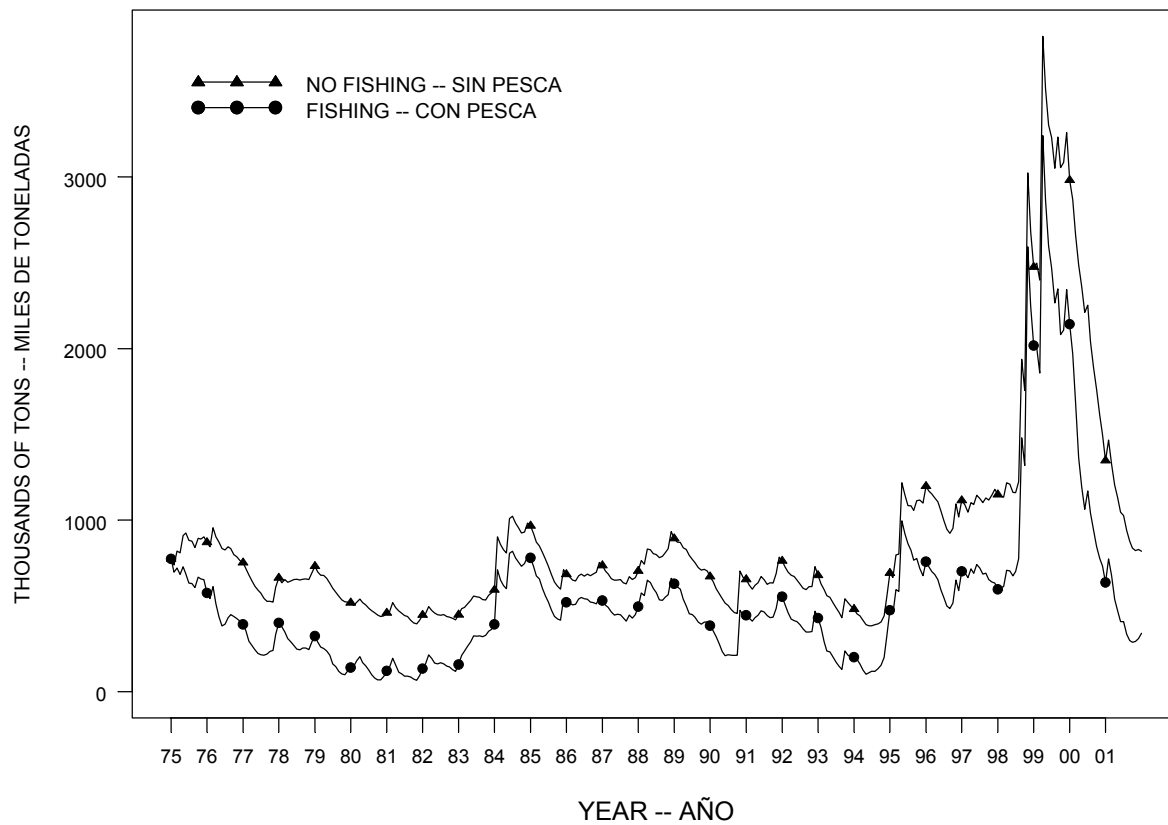


FIGURE 4.9c. Biomass trajectory of a simulated population of skipjack tuna that was not exploited during 1975-2002 (“no fishing”) and that predicted by the stock assessment model (“fishing”) from the nonmonotonic selectivity stock assessment.

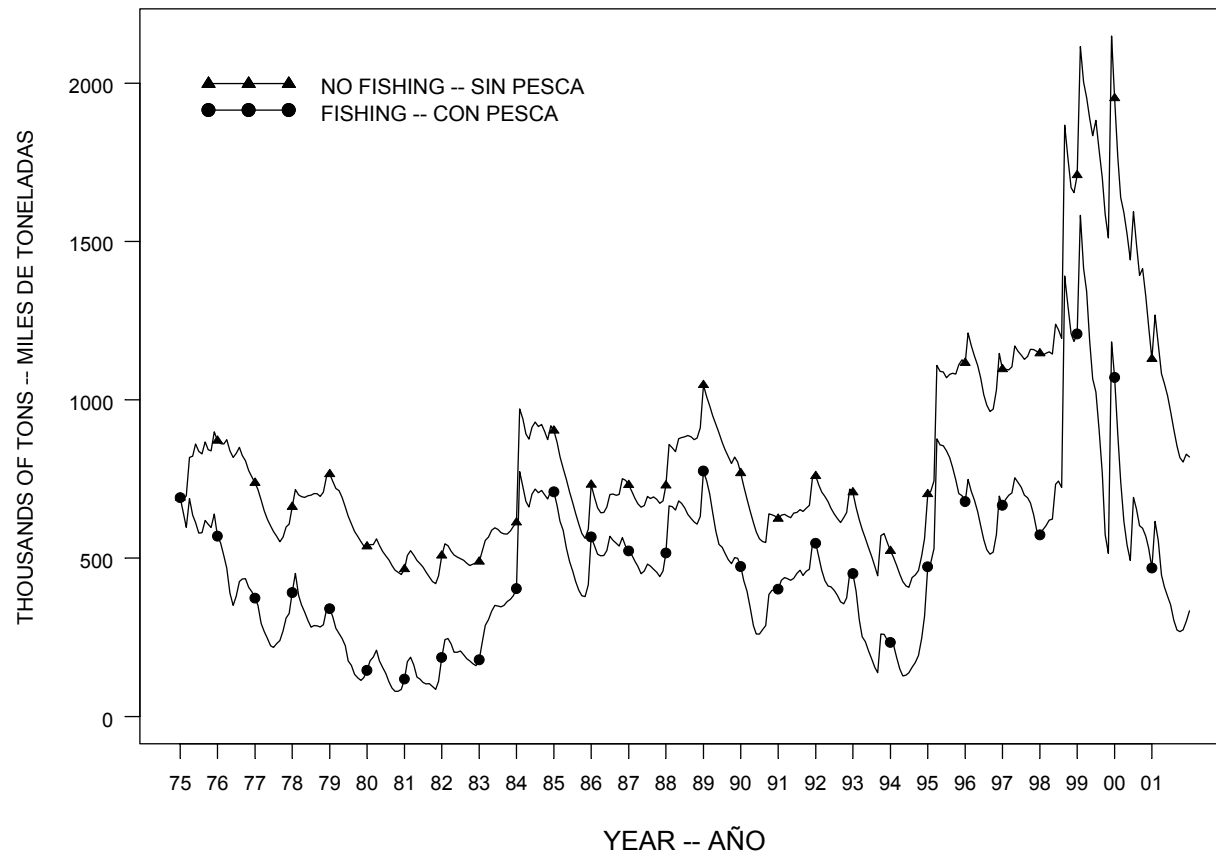


FIGURE 4.9d. Biomass trajectory of a simulated population of skipjack tuna that was not exploited during 1975-2002 (“no fishing”) and that predicted by the stock assessment model (“fishing”) from the monotonic selectivity stock assessment.

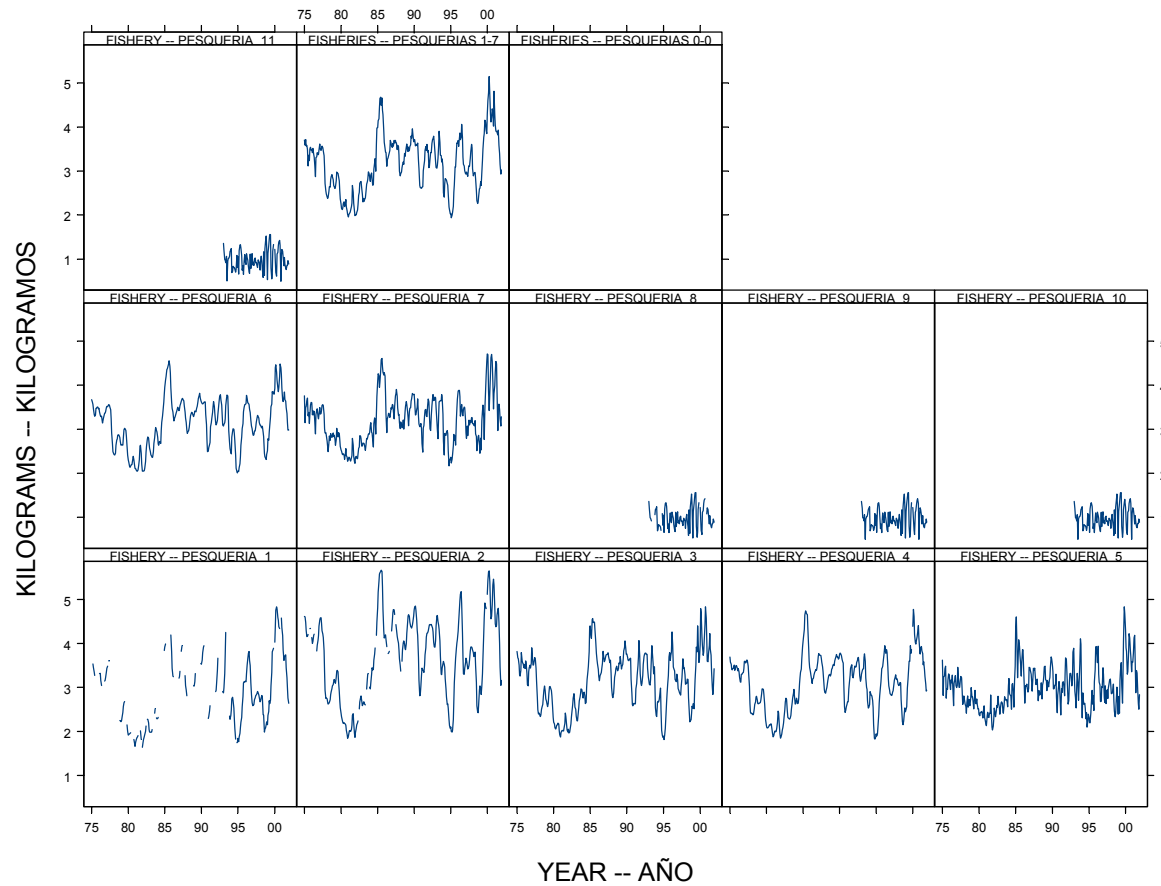


FIGURE 4.10a. Estimated average weights of skipjack tuna caught by the fisheries of the EPO, from the nonmonotonic selectivity assessment. The time series for “Fisheries 1-7” is an average of Fisheries 1 through 7.

FIGURA 4.10a. Peso medio estimado de atún barrilete capturado en las pesquerías del OPO, de la Evaluación 1. La serie de tiempo de “Pesquerías 1-7” es un promedio de las Pesquerías 1 a 7.

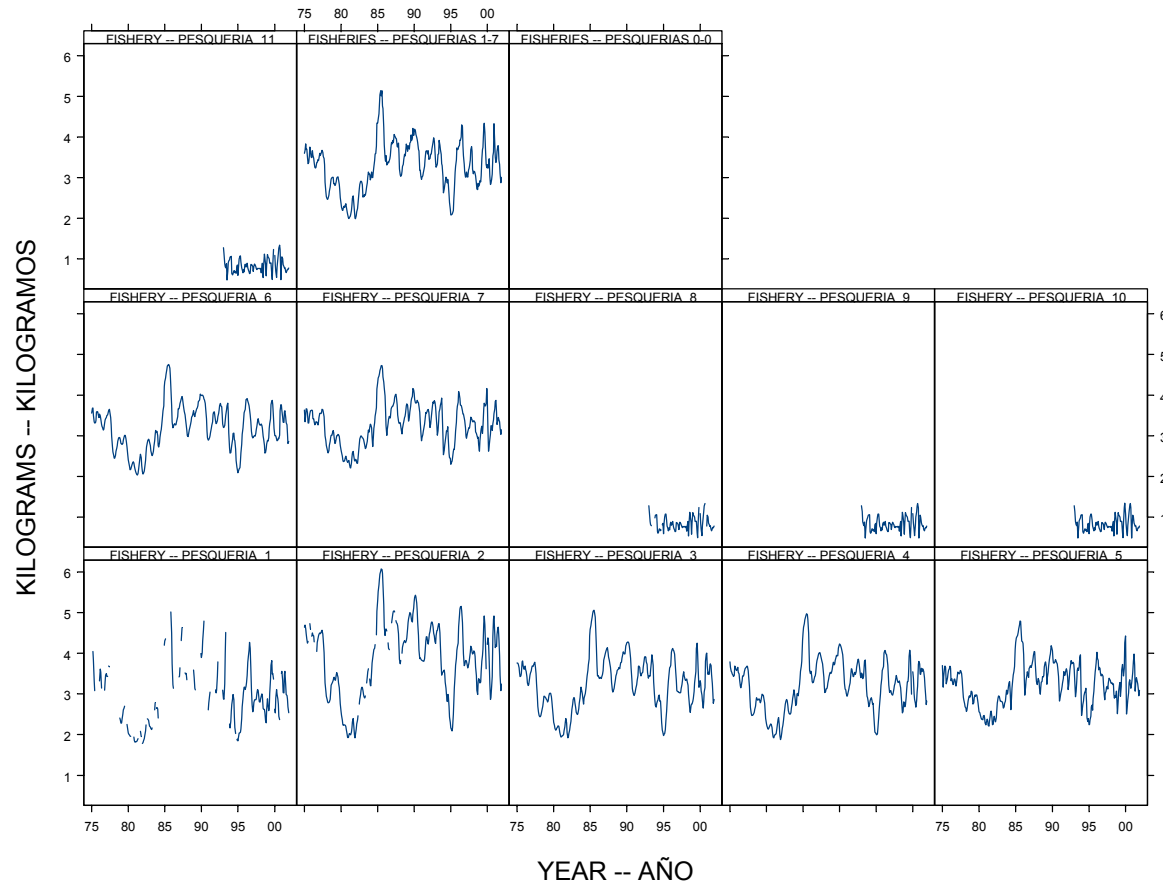


FIGURE 4.10b. Estimated average weights of skipjack tuna caught by the fisheries of the EPO from the monotonic selectivity assessment. The time series for “Fisheries 1-7” is an average of Fisheries 1 through 7.

FIGURA 4.10b. Peso medio estimado de atún barrilete capturado en las pesquerías del OPO, de la Evaluación 2. La serie de tiempo de “Pesquerías 1-7” es un promedio de las Pesquerías 1 a 7.

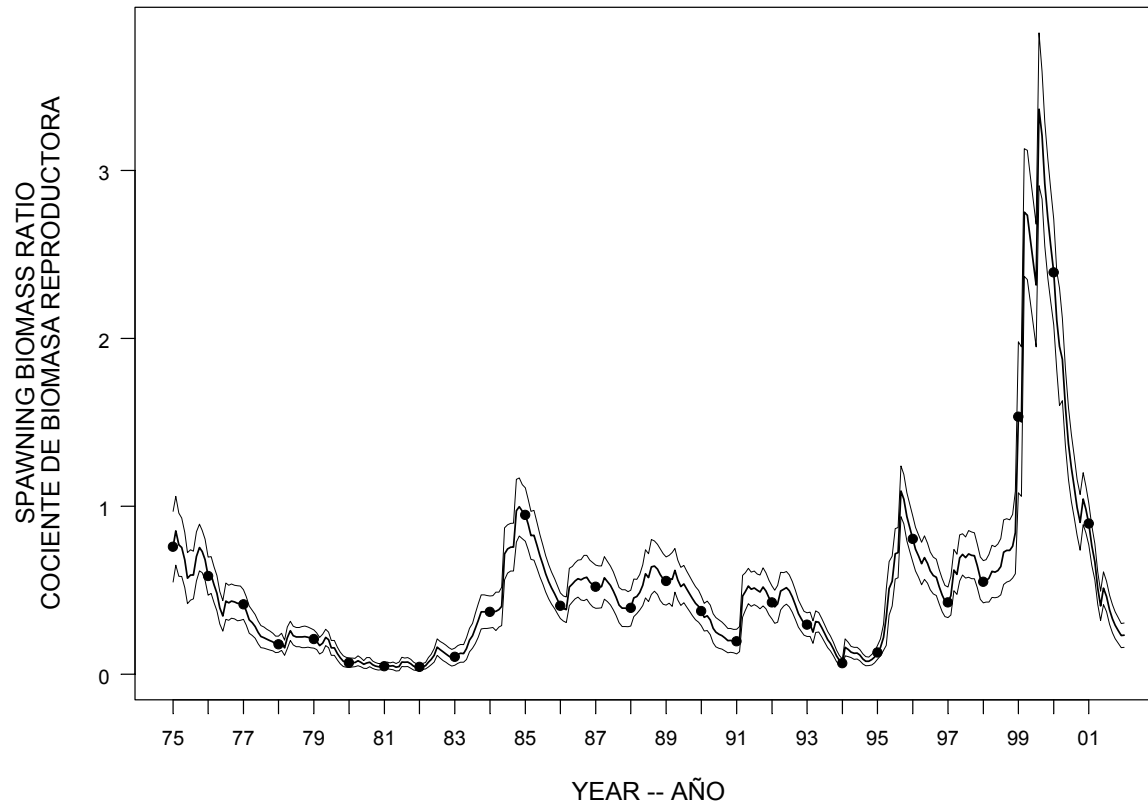


FIGURE 5.1a. Estimated time series of spawning biomass ratios (SBRs) for skipjack tuna in the EPO, from the nonmonotonic selectivity assessment.
FIGURA 5.1a. Series de tiempo estimadas de los cocientes de biomasa reproductora (SBR) de atún barrilete en el OPO, de la Evaluación 1.

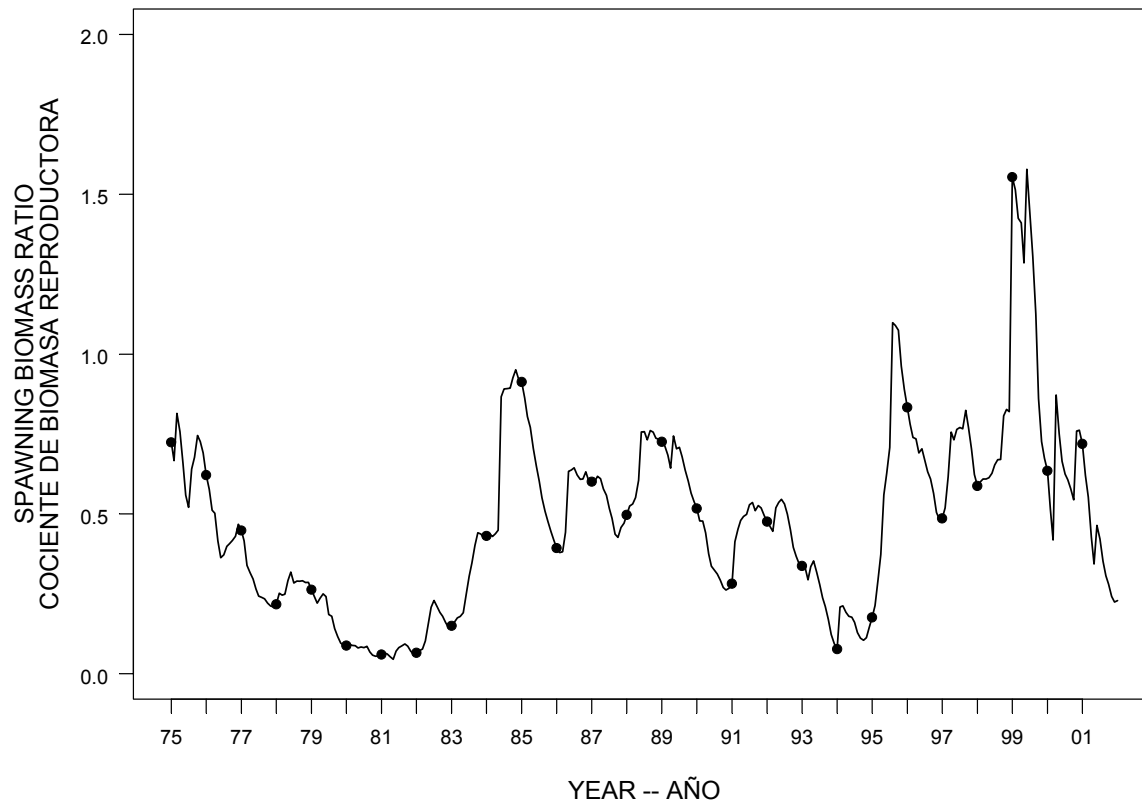


FIGURE 5.1b. Estimated time series of spawning biomass ratios (SBRs) for skipjack tuna in the EPO, from the monotonic selectivity assessment.
FIGURA 5.1b. Series de tiempo estimadas de los cocientes de biomasa reproductora (SBR) de atún barrilete en el OPO, de la Evaluación 2.

TABLE 2.1. Fisheries defined by the IATTC staff for the stock assessment of skipjack tuna in the EPO. PS = purse seine; BB = baitboat; FLT = sets on floating objects; UNA = sets on unassociated fish; DOL = sets on dolphins. The sampling areas are shown in Figure 3.1, and descriptions of the discards are provided in Section 2.2.2.

TABLA 2.1. Pesquerías definidas por el personal de la CIAT para la evaluación del stock de atún barrilete en el OPO. PS = red de cerco; BB = carnada; LL = palangre; FLT = lance sobre objeto flotante; UNA = lance sobre atunes no asociados; DOL = lances sobre delfines. En la Figura 3.1 se ilustran las zonas de muestreo, y en la Sección 2.2.2 se describen los descartes.

Fishery	Gear type	Set type	Years	Sampling areas	Catch data
Pesquería	Tipo de arte	Tipo de lance	Año	Zonas de muestreo	Datos de captura
1	PS	FLT	1981-2001	11-12	
2	PS	FLT	1981-2001	7, 9	landings + discards from inefficiencies in fishing process—descargas + descartes de
3	PS	FLT	1981-2001	5-6, 13	ineficacias en el proceso de pesca
4	PS	FLT	1981-2001	1-4, 8, 10	
5	PS	UNA	1981-2001	1-4, 8, 10	landings + discards—
6	PS	UNA	1981-2001	5-7, 9, 11-13	descargas + descartes
7	PS-BB	DOL	1981-2001	1-13	
8	PS	FLT	1993-2001	11-12	discards of small fish from size-sorting the catch by Fishery 1—descartes de peces pequeños de clasificación por tamaño en la Pesquería 1
9	PS	FLT	1993-2001	7, 9	discards of small fish from size-sorting the catch by Fishery 2—descartes de peces pequeños de clasificación por tamaño en la Pesquería 2
10	PS	FLT	1993-2001	5-6, 13	discards of small fish from size-sorting the catch by Fishery 3—descartes de peces pequeños de clasificación por tamaño en la Pesquería 3
11	PS	FLT	1993-2001	1-4, 8, 10	discards of small fish from size-sorting the catch by Fishery 4—descartes de peces pequeños de clasificación por tamaño en la Pesquería 4

TABLE 4.1a. Estimated total annual recruitment to the fishery at the age of 9 months (millions of fish), initial biomass (metric tons present at the beginning of the year), and relative spawning biomass of skipjack tuna in the EPO for the nonmonotonic selectivity assessment. Biomass is defined as the total weight of skipjack one year of age and older; spawning biomass is estimated with the maturity schedule and sex ratio data.

TABLA 4.1a. Reclutamiento anual total estimado a la pesquería a la edad de 9 meses (en millones de peces), biomasa inicial (toneladas métricas presentes al principio de año), y biomasa reproductora del atún barrilete en el OPO para la Evaluación 1. Se define la biomasa como el peso total de barrilete de un año o más de edad; se estima la biomasa reproductora con el calendario de madurez y datos de proporciones de sexos.

Year	Total recruitment	Biomass of age-1+ fish	Relative spawning biomass
Año	Reclutamiento total	Biomasa de peces de edad 1+	Biomasa reproductora relativa
1975	2,107	773,493	0.31
1976	1,110	575,413	0.23
1977	1,510	392,144	0.15
1978	1,324	400,493	0.07
1979	890	323,813	0.07
1980	1,087	140,292	0.02
1981	940	120,793	0.01
1982	941	135,086	0.01
1983	2,221	158,147	0.03
1984	1,635	391,802	0.13
1985	1,317	780,717	0.36
1986	1,476	521,343	0.20
1987	1,684	531,962	0.20
1988	1,928	496,278	0.16
1989	967	628,352	0.22
1990	1,502	385,367	0.16
1991	1,521	445,062	0.08
1992	1,140	553,849	0.17
1993	742	429,152	0.13
1994	2,116	201,523	0.03
1995	2,496	474,700	0.04
1996	2,346	757,680	0.29
1997	2,414	700,881	0.18
1998	7,385	595,865	0.19
1999	5,650	2,017,829	0.42
2000	1,890	2,140,851	1.00
2001	1,294	636,298	0.39
2002		773,493	0.31

TABLE 4.1b. Estimated total annual recruitment to the fishery at the age of 9 months (millions of fish), initial biomass (metric tons present at the beginning of the year), and relative spawning biomass of skipjack tuna in the EPO for the monotonic selectivity assessment. Biomass is defined as the total weight of skipjack one year of age and older; spawning biomass is estimated with the maturity schedule and sex ratio data.

TABLA 4.1b. Reclutamiento anual total estimado a la pesquería a la edad de 9 meses (en millones de peces), biomasa inicial (toneladas métricas presentes al principio de año), y biomasa reproductora relativa del atún barrilete en el OPO para la Evaluación 2. Se define la biomasa como el peso total de barrilete de un año o más de edad; se estima la biomasa reproductora con el calendario de madurez y datos de proporciones de sexos.

Year	Total recruitment	Biomass of age-1+ fish	Relative spawning biomass
Año	Reclutamiento total	Biomasa de peces de edad 1+	Biomasa reproductora relativa
1975	2,086	691,385	0.67
1976	1,305	569,273	0.55
1977	1,693	374,036	0.37
1978	1,406	391,442	0.18
1979	950	340,792	0.20
1980	1,119	145,824	0.07
1981	1,150	118,206	0.04
1982	1,082	186,524	0.04
1983	2,435	179,231	0.12
1984	1,251	403,517	0.36
1985	1,471	709,113	0.88
1986	1,421	566,721	0.45
1987	2,117	522,820	0.54
1988	2,098	516,575	0.44
1989	1,065	774,781	0.67
1990	1,491	473,509	0.53
1991	1,584	402,295	0.25
1992	1,234	547,360	0.44
1993	855	451,269	0.33
1994	2,012	233,755	0.09
1995	2,766	473,097	0.12
1996	2,468	678,181	0.70
1997	2,413	667,081	0.44
1998	5,690	573,641	0.48
1999	2,655	1,208,036	1.00
2000	2,008	1,070,576	0.68
2001	1,491	469,123	0.59
2002		333,624	0.19

TABLE 4.2a. Estimates of the average sizes of skipjack tuna for the nonmonotonic selectivity assessment. The ages are expressed in months after hatching.

TABLA 4.2a. Estimaciones del tamaño medio de atún barrilete. Se expresan las edades en meses desde la cría.

Age (months)	Average length (cm)	Average weight (kg)	Age (months)	Average length (cm)	Average weight (kg)
Edad (trimestres)	Talla media (cm)	Peso medio (kg)	Edad (trimestres)	Talla media (cm)	Peso medio (kg)
9	30.00	0.48	21	57.49	4.20
10	39.56	1.21	22	61.59	5.28
11	41.70	1.45	23	63.10	5.72
12	43.45	1.66	24	64.48	6.15
13	44.42	1.78	25	65.80	6.58
14	45.36	1.91	26	67.03	7.00
15	46.56	2.08	27	68.15	7.39
16	47.61	2.24	28	69.20	7.78
17	52.57	3.12	29	70.21	8.16
18	53.49	3.30	30	71.14	8.53
19	54.71	3.56	31	72.01	8.88
20	56.12	3.88	32	72.86	9.23

TABLE 4.2b. Estimates of the average sizes of skipjack tuna for the monotonic selectivity assessment. The ages are expressed in months after hatching.

TABLA 4.2b. Estimaciones del tamaño medio de atún barrilete. Se expresan las edades en meses desde la cría.

Age (months)	Average length (cm)	Average weight (kg)	Age (months)	Average length (cm)	Average weight (kg)
Edad (trimestres)	Talla media (cm)	Peso medio (kg)	Edad (trimestres)	Talla media (cm)	Peso medio (kg)
9	30.00	0.47	21	56.04	3.88
10	35.59	0.84	22	61.59	5.33
11	40.51	1.30	23	63.09	5.78
12	42.09	1.48	24	64.48	6.22
13	44.11	1.74	25	65.79	6.65
14	45.12	1.87	26	67.01	7.08
15	46.46	2.07	27	68.15	7.49
16	49.16	2.50	28	69.22	7.89
17	50.99	2.83	29	70.21	8.28
18	52.28	3.07	30	71.14	8.65
19	54.22	3.47	31	72.01	9.02
20	55.14	3.68	32	72.85	9.37

APPENDIX: ADDITIONAL RESULTS FROM THE ASSESSMENTS

This appendix contains additional results from the assessments of skipjack tuna in the EPO. These results are annual summaries of the age-specific estimates of abundance and total fishing mortality rates. This appendix was prepared in response to requests received during the second meeting of the scientific working group.

ANEXO. RESULTADOS ADICIONALES DE LAS EVALUACIONES

Este anexo contiene resultados adicionales de las evaluaciones del atún barrilete en el OPO: resúmenes anuales de las estimaciones por edad de la abundancia y las tasas de mortalidad por pesca total. Fue preparado en respuesta a solicitudes expresadas durante la segunda reunión de Grupo de Trabajo Científico.

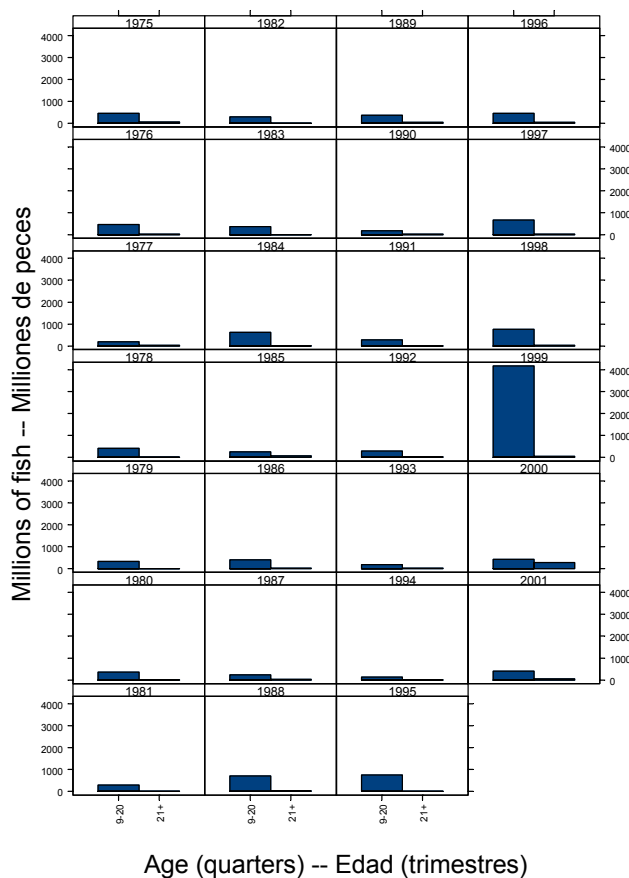


FIGURE A.1a. Numbers of skipjack tuna present in the EPO on 1 January of each calendar year, from the nonmonotonic selectivity assessment.

FIGURA A.1a. Número de atunes barrilete presentes en el OPO el 1 de enero de cada año, de la Evaluación 1 (izquierda) y la Evaluación 2 (derecha)..

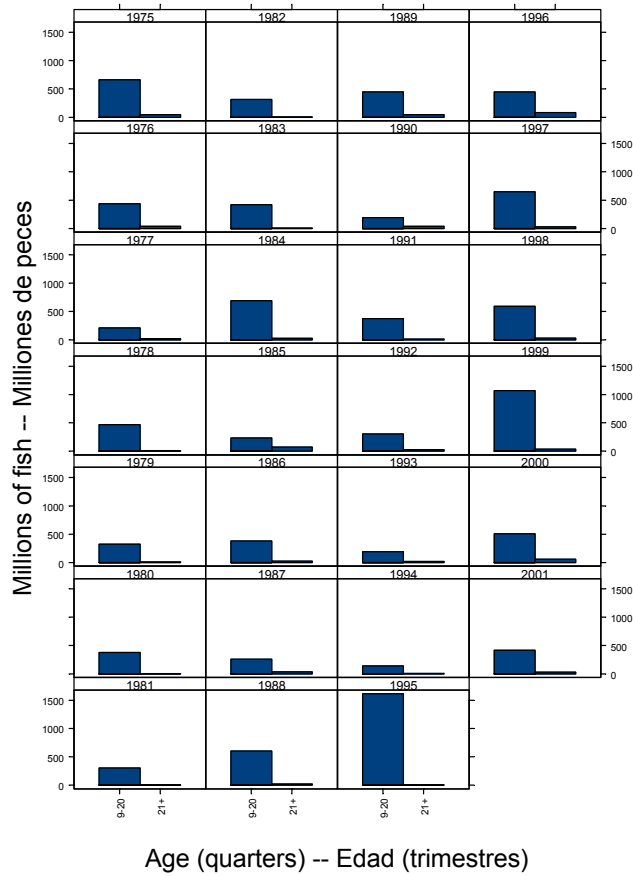


FIGURE A.1b. Numbers of skipjack tuna present in the EPO on 1 January of each calendar year, from the monotonic selectivity assessment.
FIGURA A.1b. Número de atunes barrilete presentes en el OPO el 1 de enero de cada año, de la Evaluación 1 (izquierda) y la Evaluación 2 (derecha)..

TABLE A.1. Average annual fishing mortality rates on skipjack tuna in the EPO.**TABLA A.1.** Tasas de mortalidad por pesca anual media para el atún barrilete en el OPO.

	Nonomonotonic selectivity		Monotonic selectivity	
	Ages 9-20	Ages 21+	Ages 9-20	Ages 21+
	Evaluación 1		Evaluación 2	
	Edad 9-20	Edad 21+	Edad 9-20	Edad 21+
1975	0.5240	0.8722	0.4422	1.2879
1976	0.7273	1.2232	0.7361	1.8998
1977	1.0117	1.4960	0.9296	1.9369
1978	1.2673	2.6014	1.1207	3.3761
1979	1.3573	2.6765	1.2994	3.3898
1980	1.3646	3.1054	1.2720	3.8542
1981	1.5864	4.5725	1.4736	4.8407
1982	1.0318	2.2323	0.9493	2.5603
1983	0.3693	0.7230	0.3409	0.9488
1984	0.2116	0.5570	0.2073	0.7052
1985	0.3604	0.3593	0.3366	0.5960
1986	0.3012	0.3979	0.2998	0.5345
1987	0.4722	0.4591	0.4207	0.6862
1988	0.3301	0.4315	0.3350	0.5979
1989	0.5779	0.8309	0.4594	0.9750
1990	0.8689	1.1914	0.6875	1.4092
1991	0.4093	0.4901	0.3656	0.7478
1992	0.6459	0.8408	0.5829	1.2758
1993	1.5490	1.8016	1.4044	2.5091
1994	1.6435	2.3843	1.4376	3.7148
1995	0.4215	0.7593	0.3050	1.2537
1996	0.5196	0.8959	0.4664	1.1049
1997	0.5673	1.0650	0.5743	1.4259
1998	0.3511	0.6999	0.4442	1.0750
1999	0.2336	0.7398	0.7634	1.9120
2000	0.6442	1.3140	0.9842	3.5557
2001	0.5240	0.8722	0.4422	1.2879