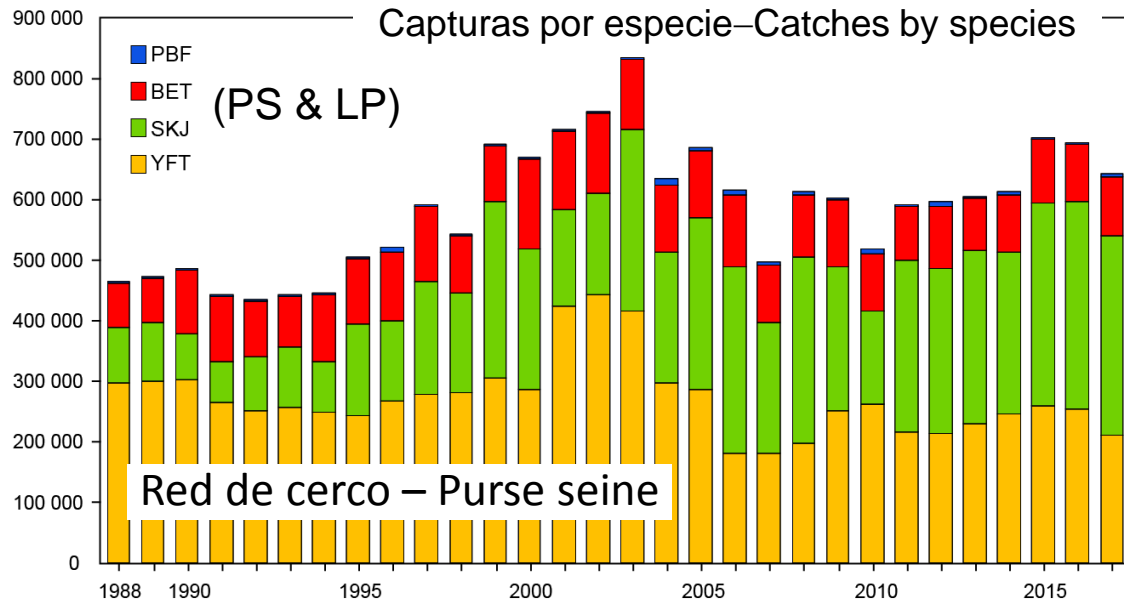


Comisión Interamericana del Atún Tropical  
Inter-American Tropical Tuna Commission



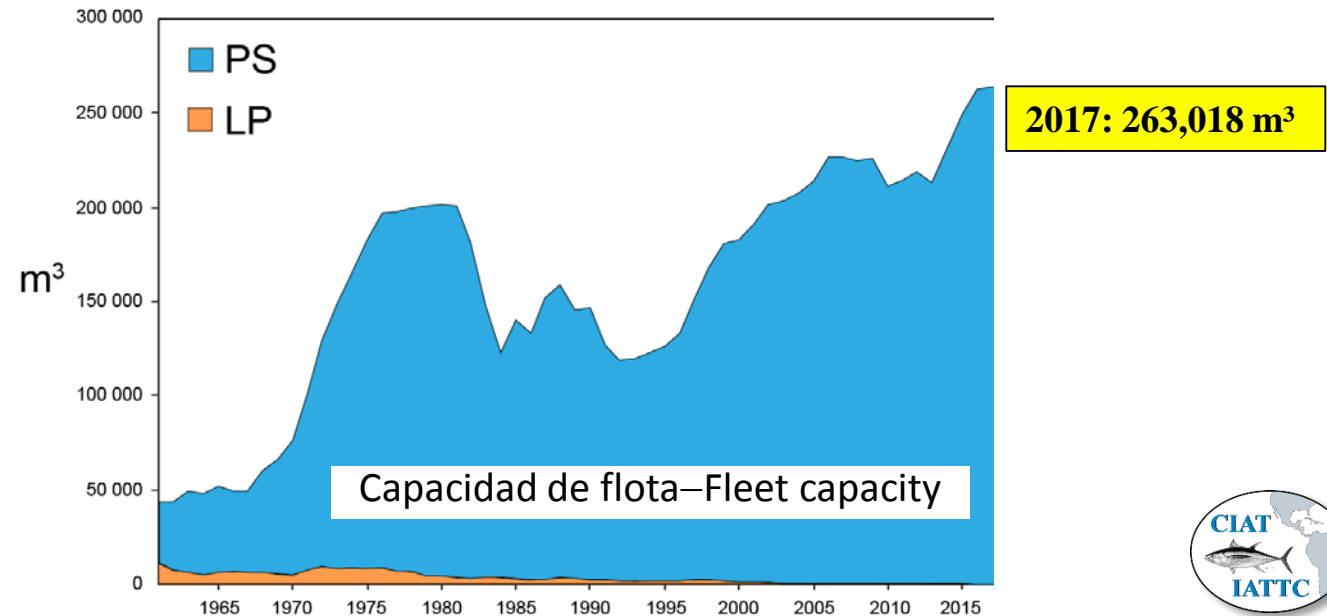
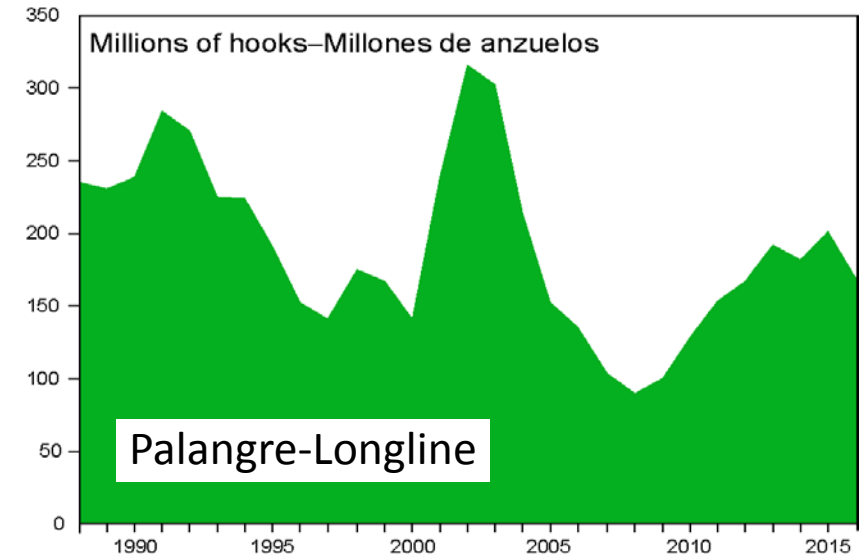
La pesquería en 2017 y la condición de las poblaciones de atunes y peces picudos  
The fishery in 2017 and status of the tuna and billfish stocks

# Componentes de la pesquería – Fishery components



BET: patudo – bigeye  
 PBF: aleta azul del Pacífico – Pacific bluefin  
 SKJ: barrilete-skipjack  
 YFT: aleta amarilla – yellowfin

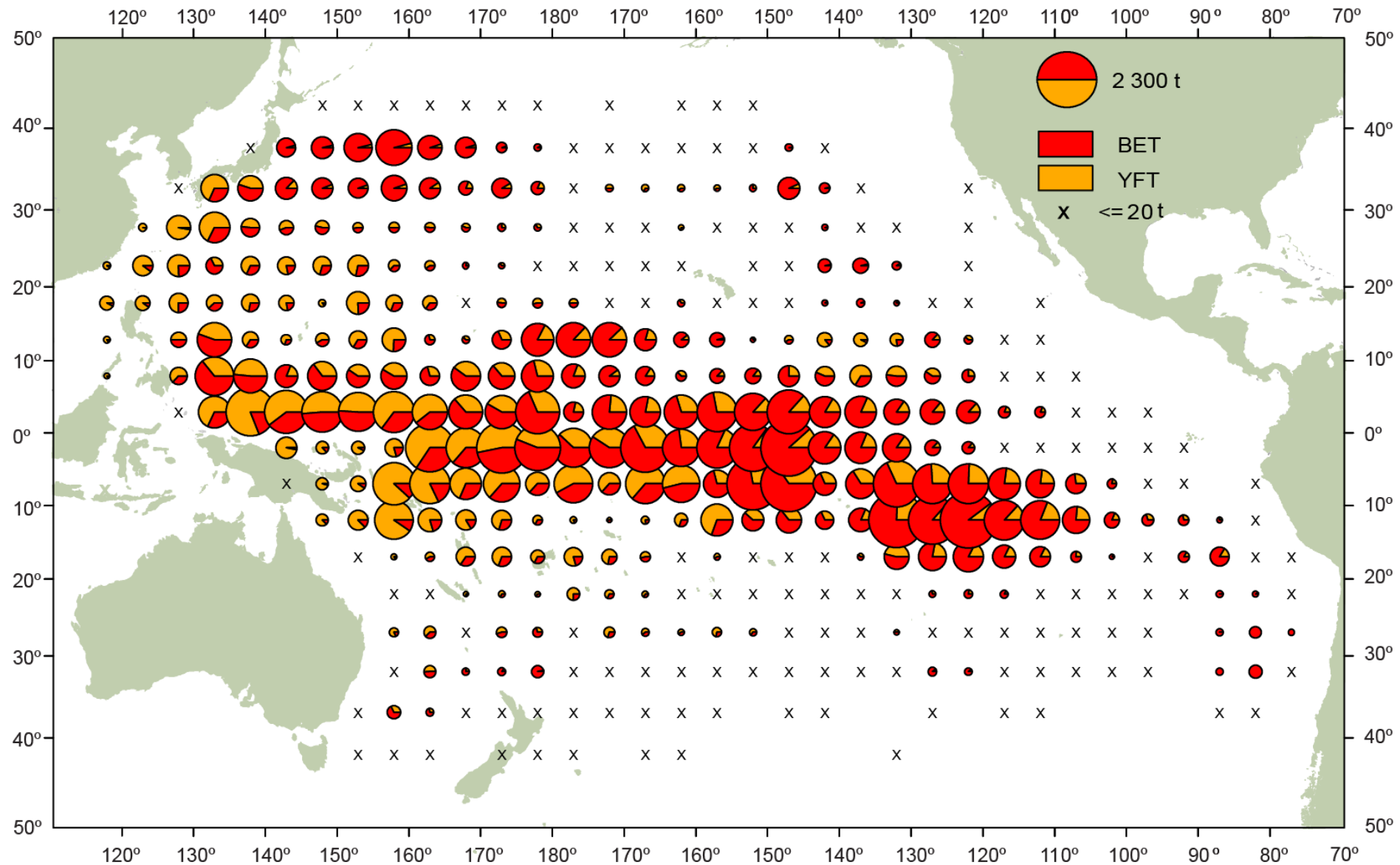
PS: cerco – purse-seine  
 LP: caña – pole-and-line



Atunes tropicales: aleta amarilla, barrilete, patudo  
Tropical tunas: yellowfin, skipjack, bigeye

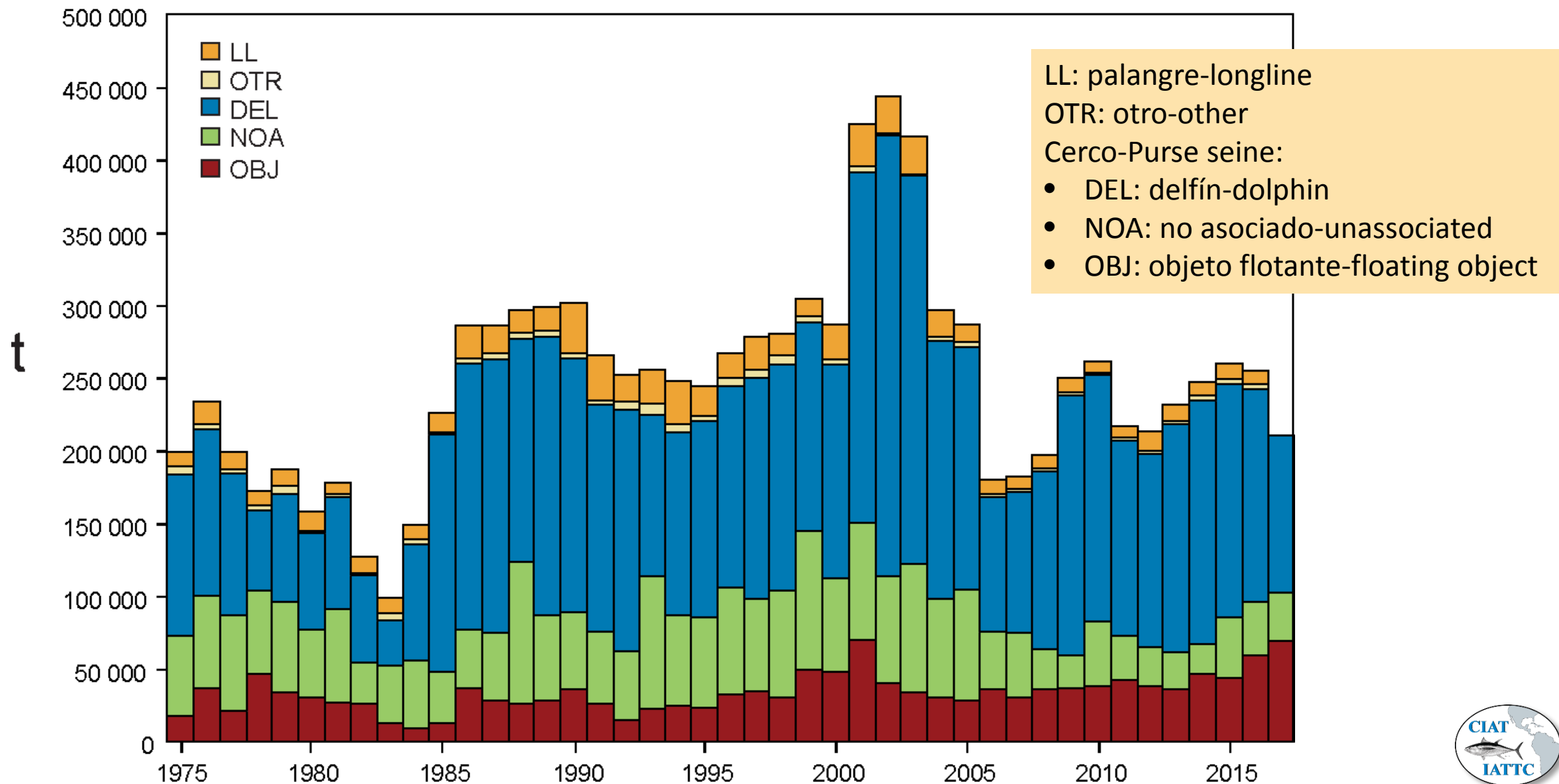


# Distribución de la captura palangrera – Distribution of longline catch 2012-2016

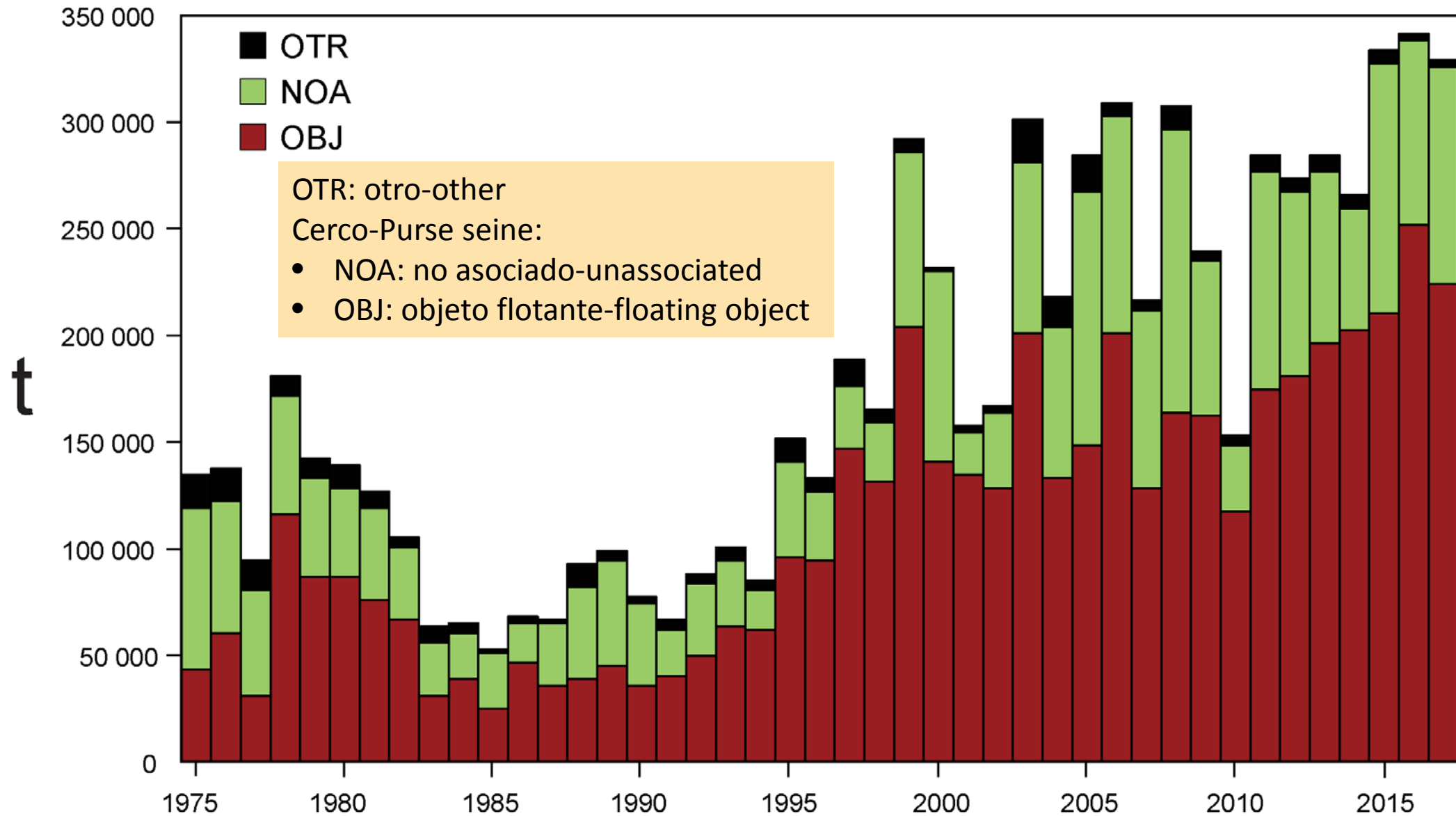




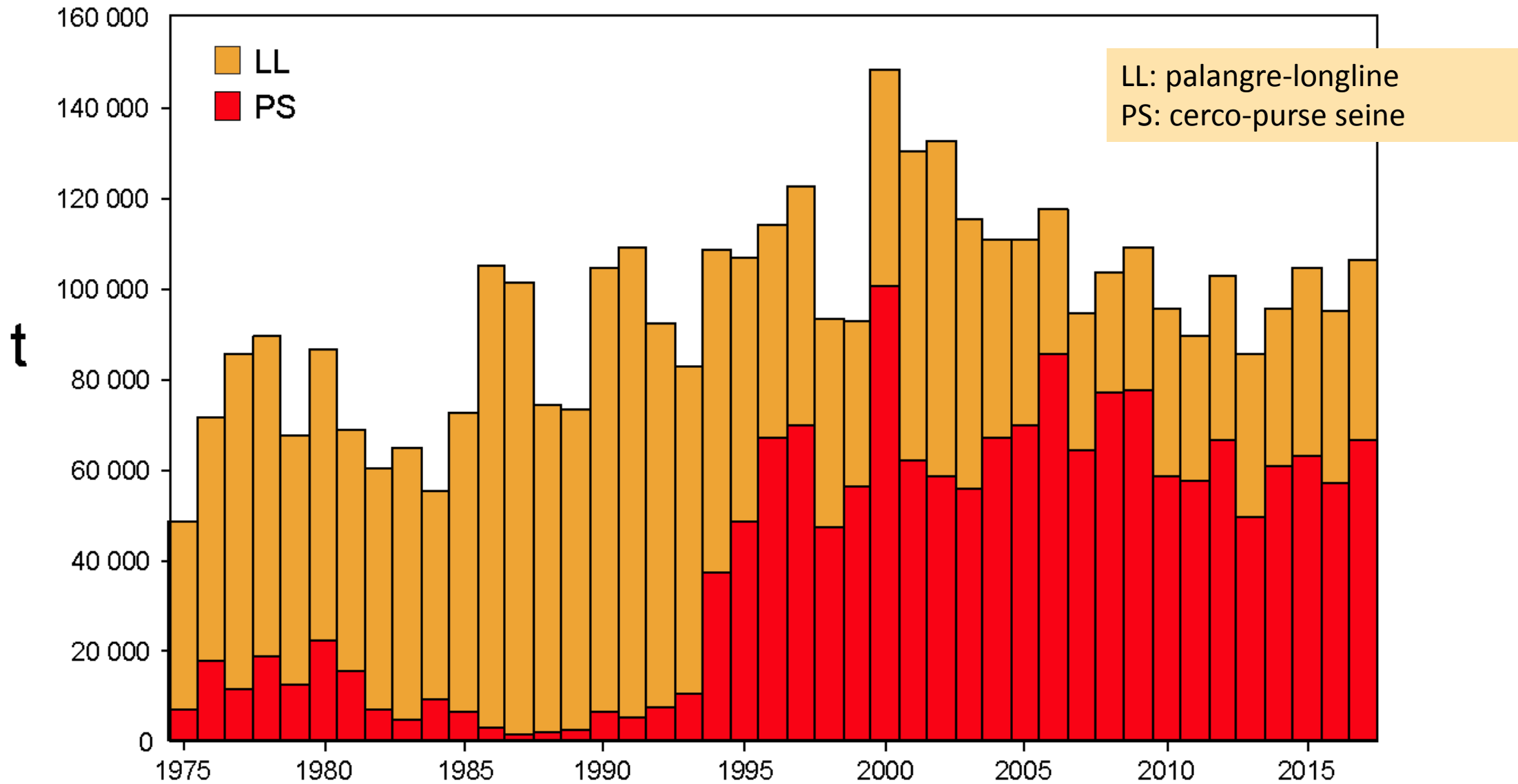
# YFT: Captura por arte – Catch by gear



# SKJ: Captura por arte – Catch by gear



# BET: Captura por arte – Catch by gear



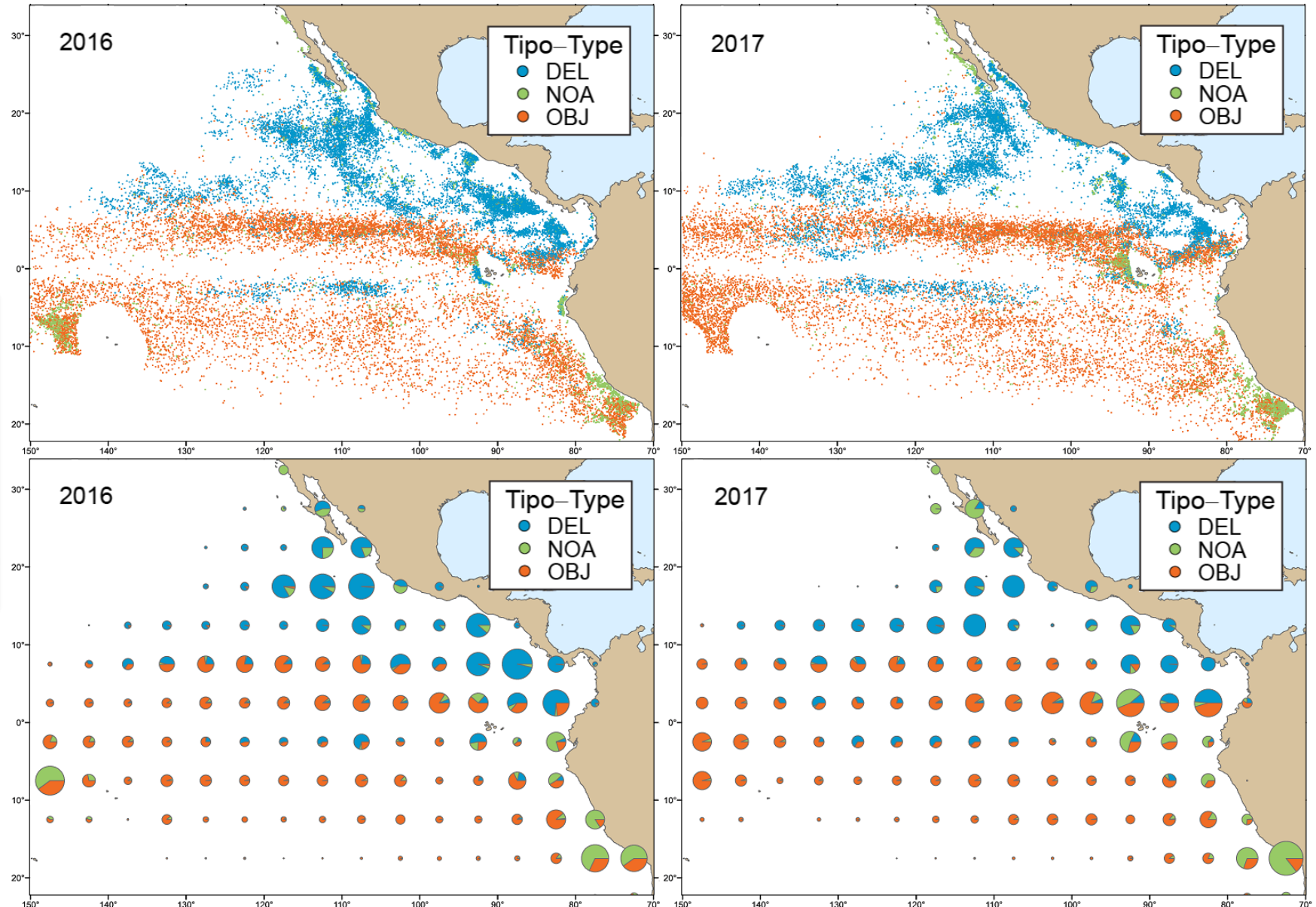
# Distribución de lances de cerco – Distribution of purse-seine sets

Lances individuales  
Individual sets

Número - Number

	2016	2017
DEL	11,219	8,864
NOA	7,375	6,976
OBJ	14,603	15,488
<b>Total</b>	<b>33,197</b>	<b>31,328</b>

Por área de 5°x5°  
By 5°x5° area





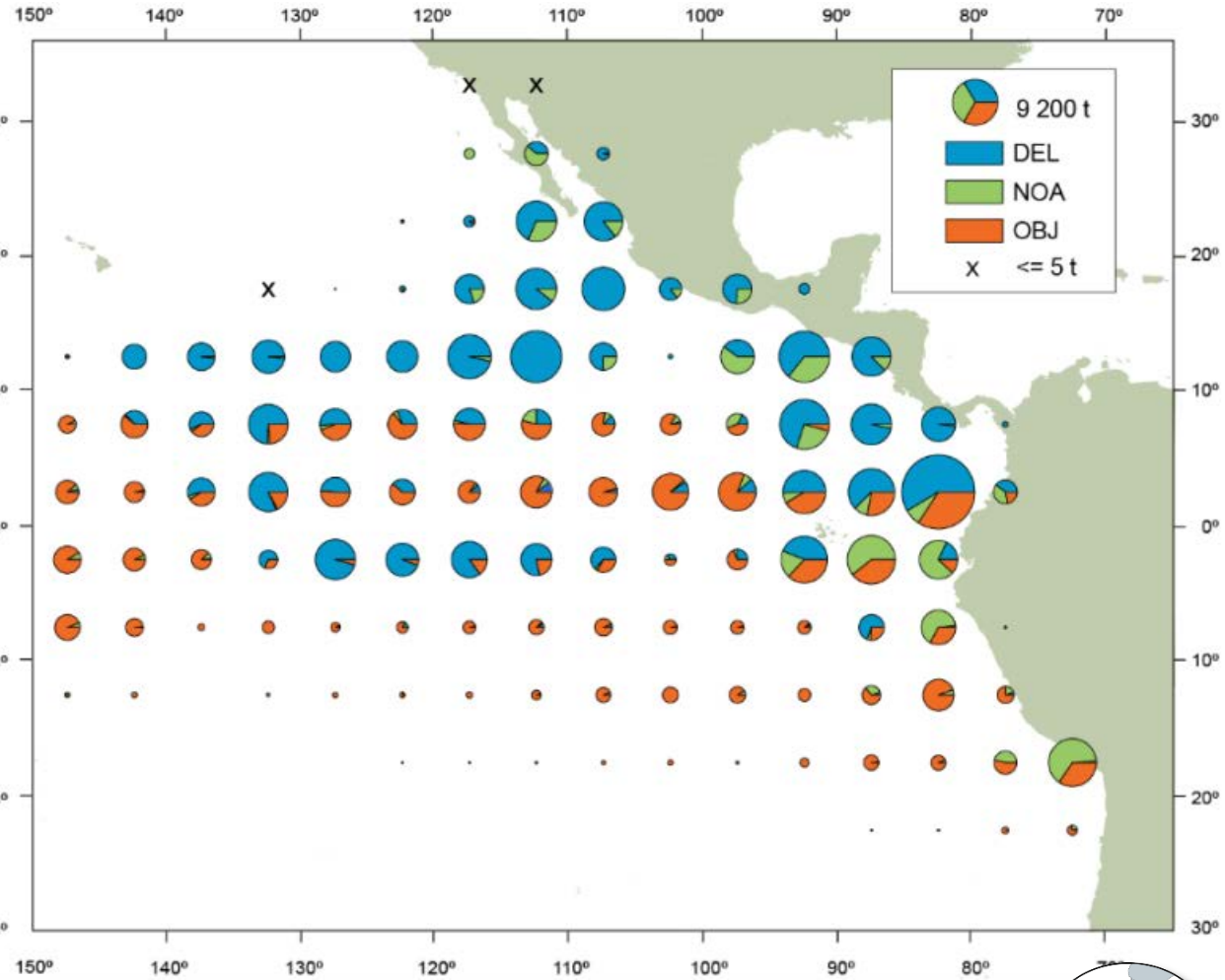
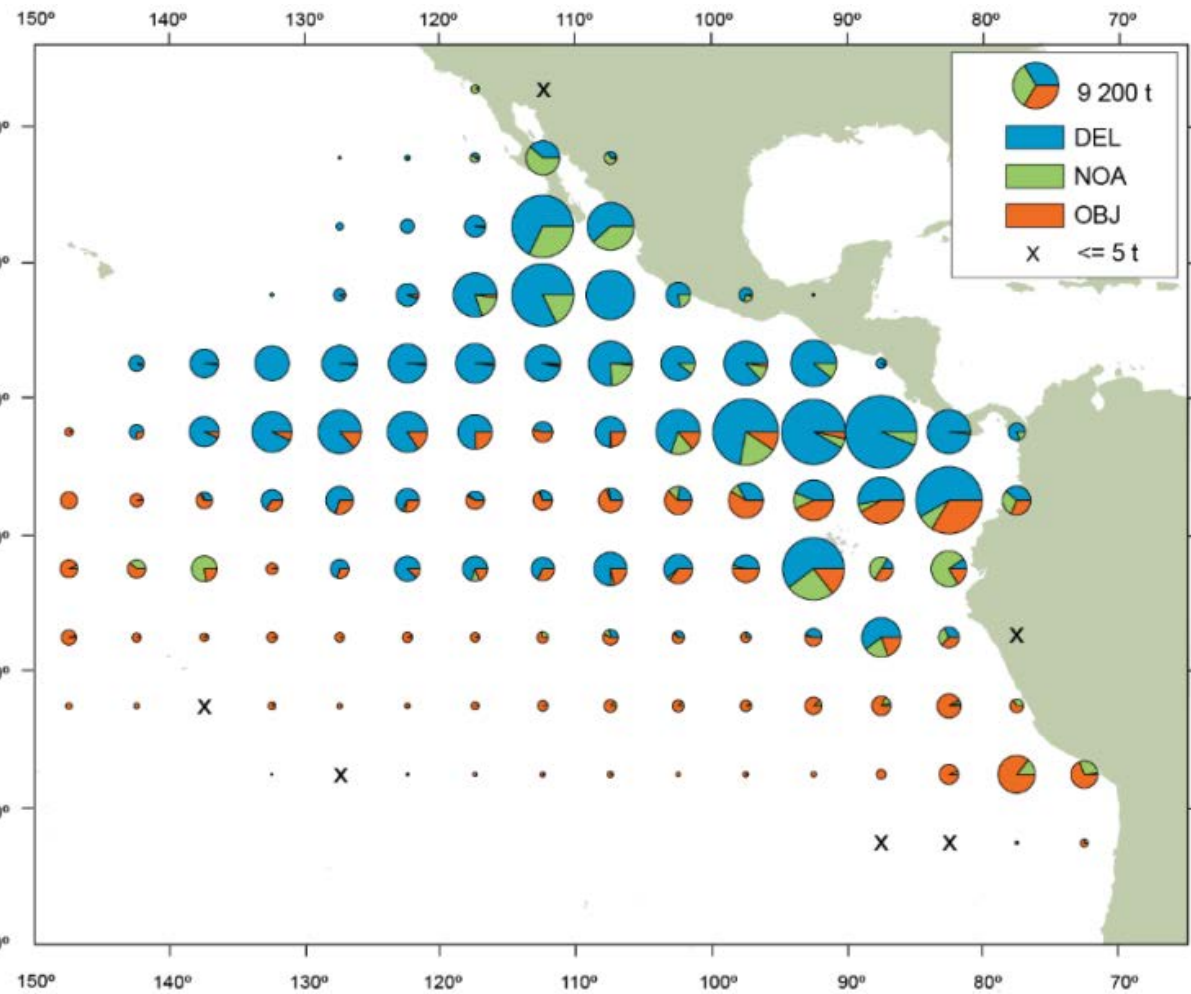
# YFT: Distribución de las capturas de cerco, por tipo de lance

## Distribution of purse-seine catches, by set type



Promedio - Average 2012-2016

2017



**228 000 t (198 000 - 246 000)**

**210 000 t (8% menor-lower)**

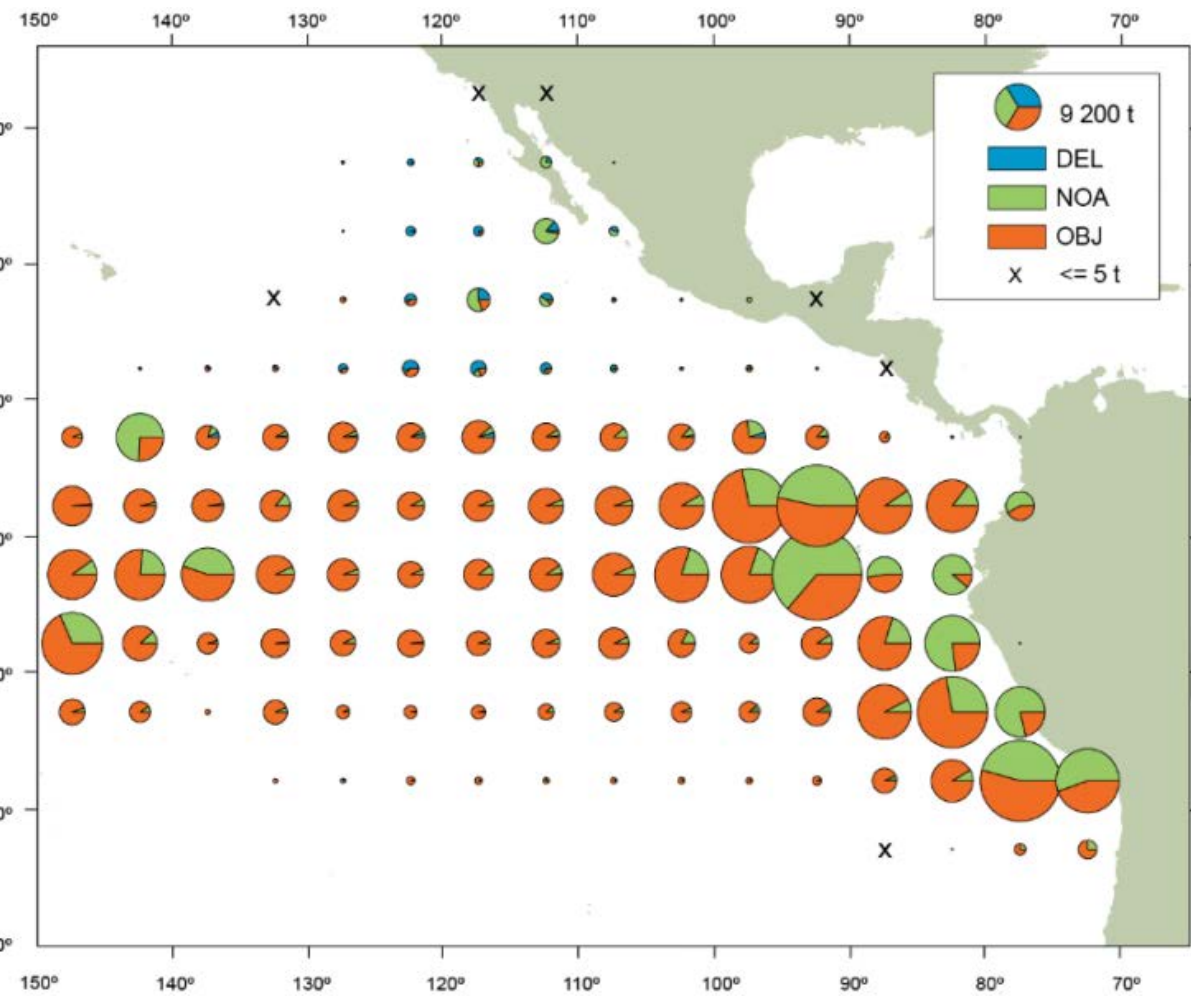


# SKJ: Distribución de las capturas de cerco, por tipo de lance

## Distribution of purse-seine catches, by set type

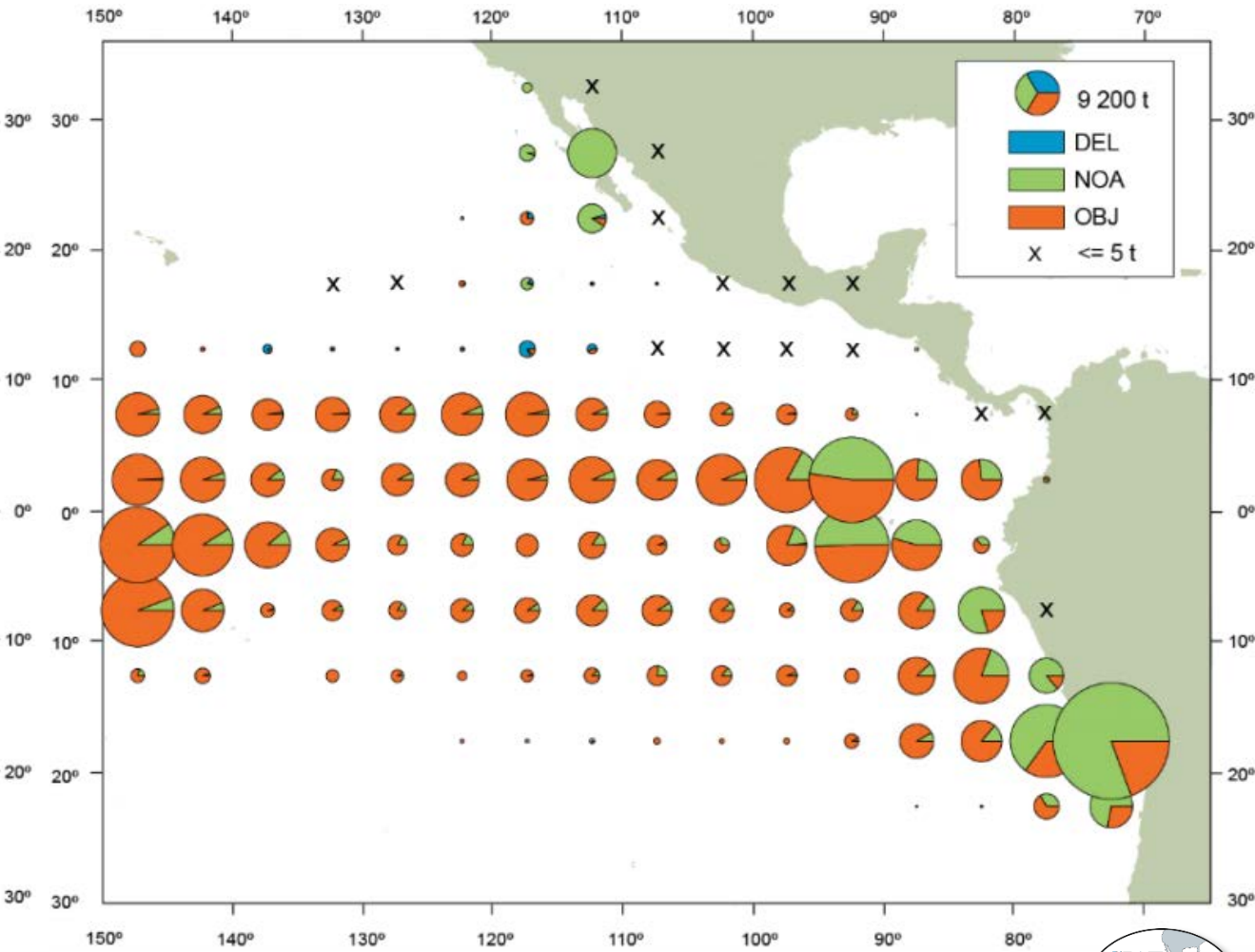


### Promedio - Average 2012-2016



**295 000 t (261 000 - 338 000)**

### 2017



**326 000 t (11% mayor-higher)**



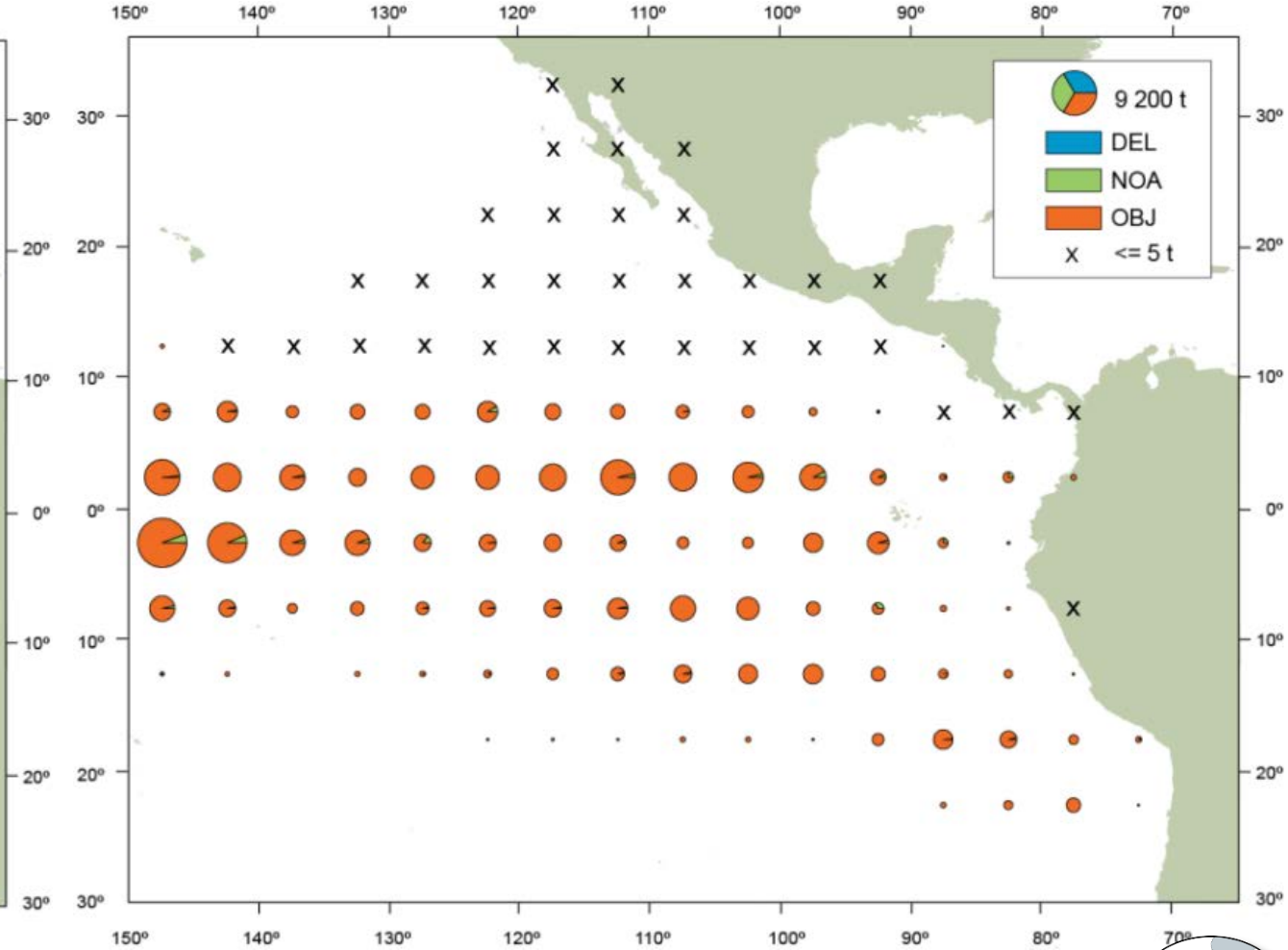
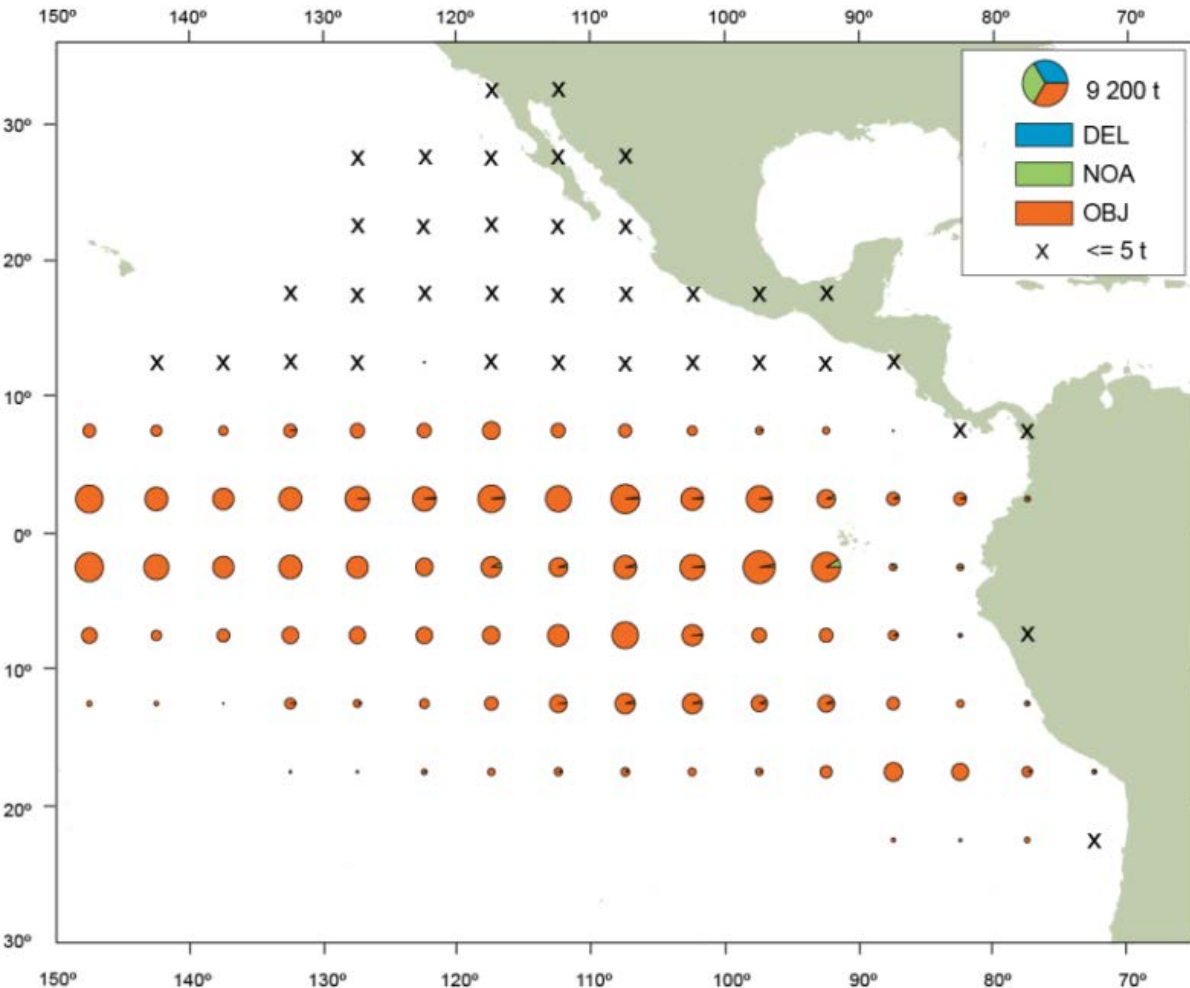
# BET: Distribución de las capturas de cerco, por tipo de lance

## Distribution of purse-seine catches, by set type



Promedio - Average 2012-2016

2017



**59 000 t (49 000 - 66 000)**

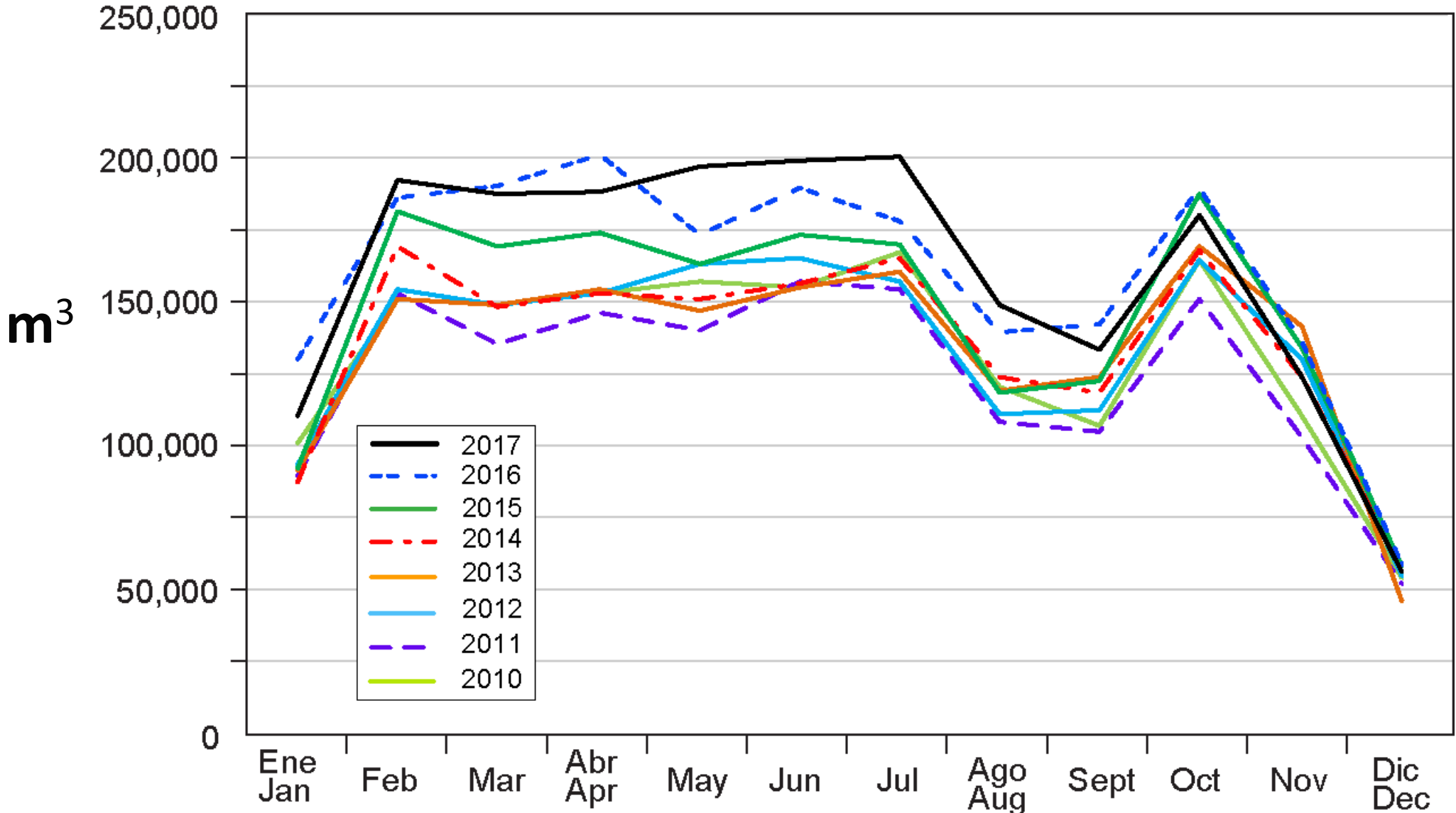
**66 000 t (12% mayor-higher)**



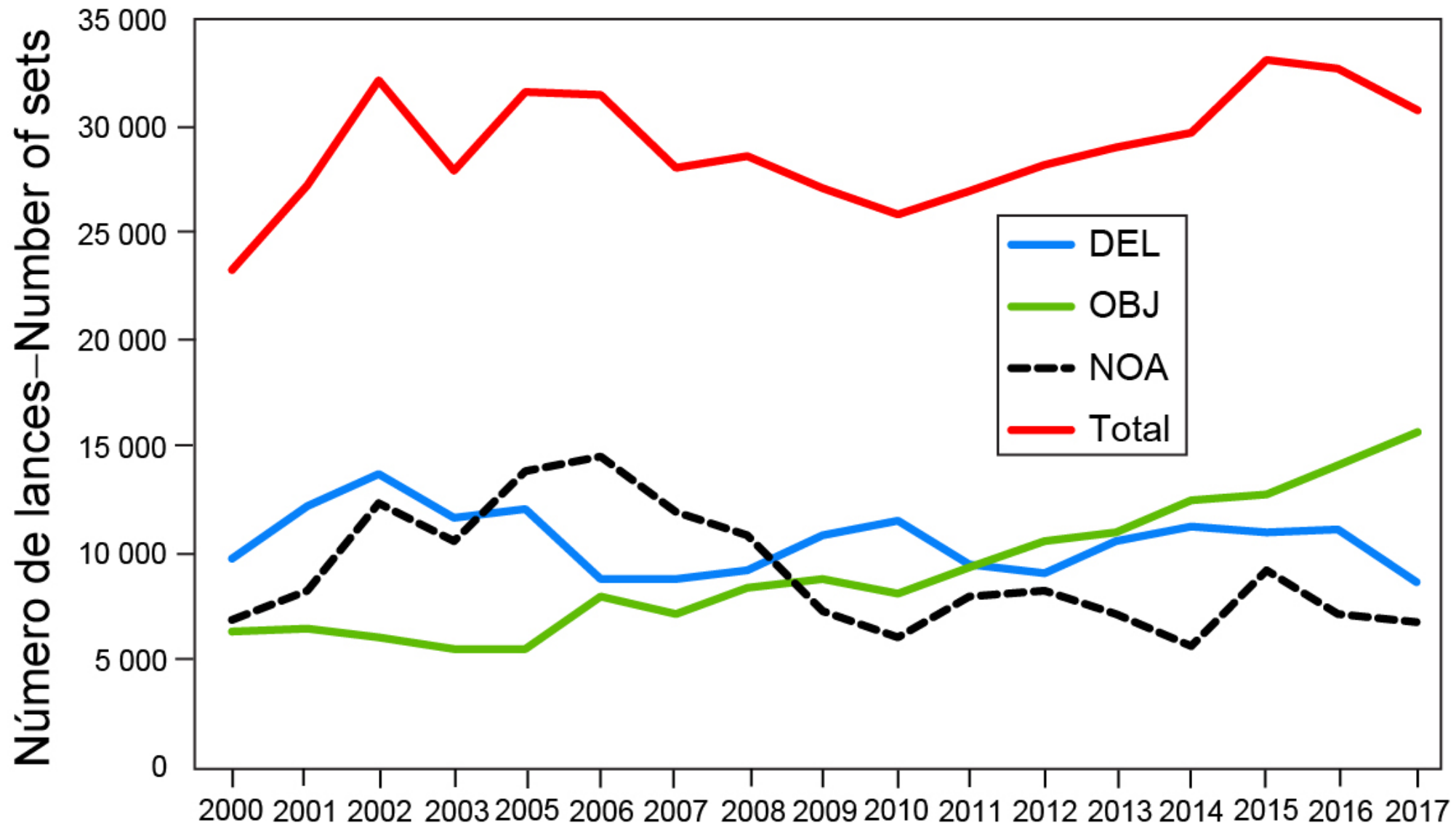


# Capacidad mensual promedio de buques cerqueros y cañeros en el mar, 2010-2017

## Average monthly capacity of purse-seine and pole-and-line vessels at sea, 2010-2017



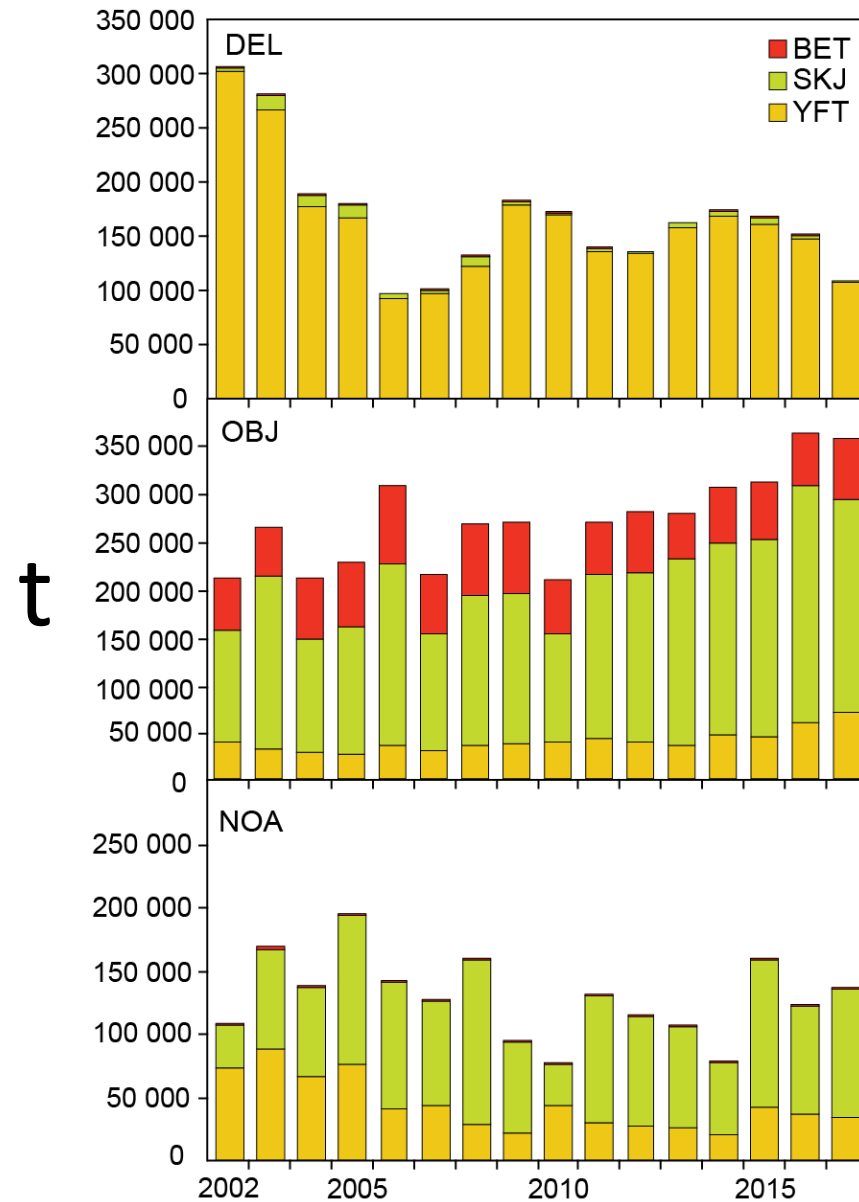
# Número de lances, por tipo – Number of sets, by type 2000-2017





# Capturas cerqueras de atunes, por especie y tipo de lance, 2002-2017

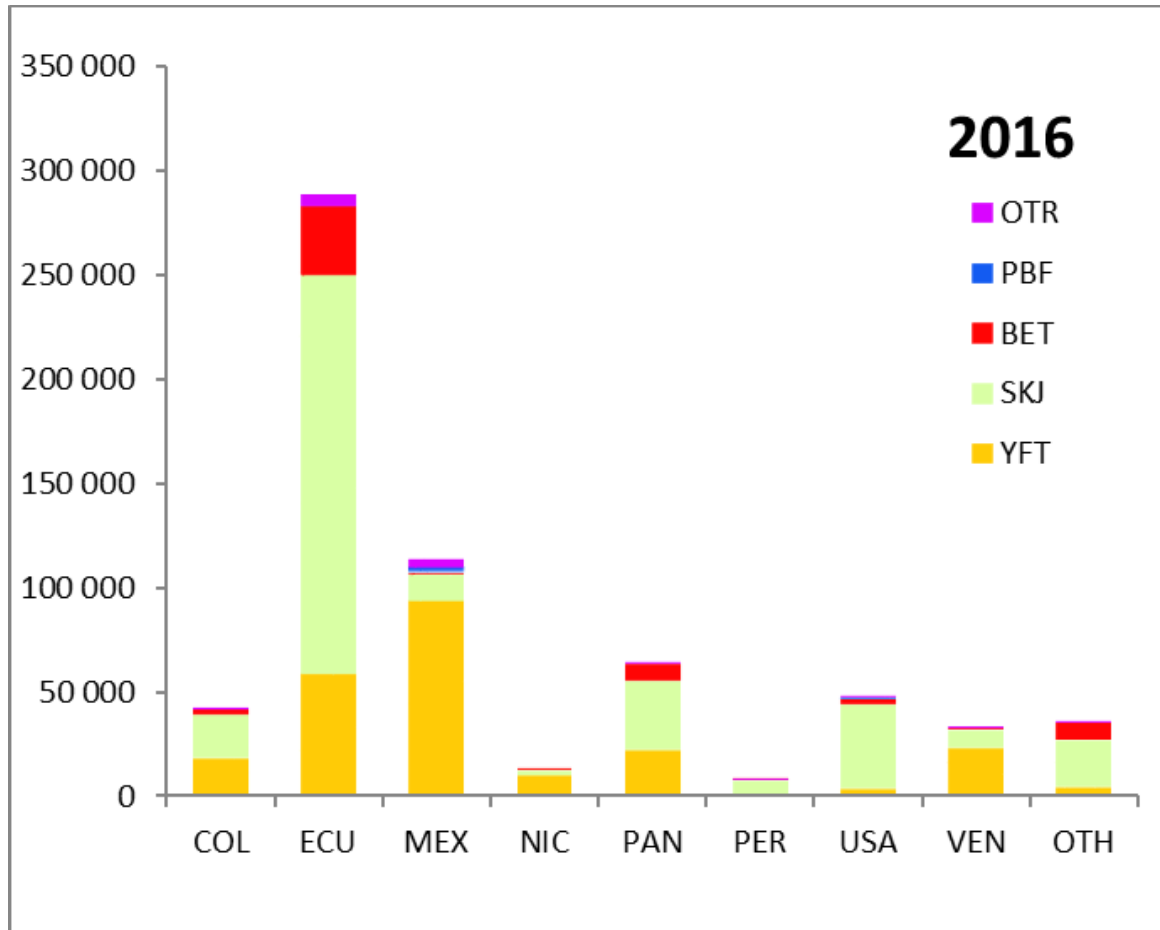
## Purse-seine catches of tunas, by species and set type, 2002-2017



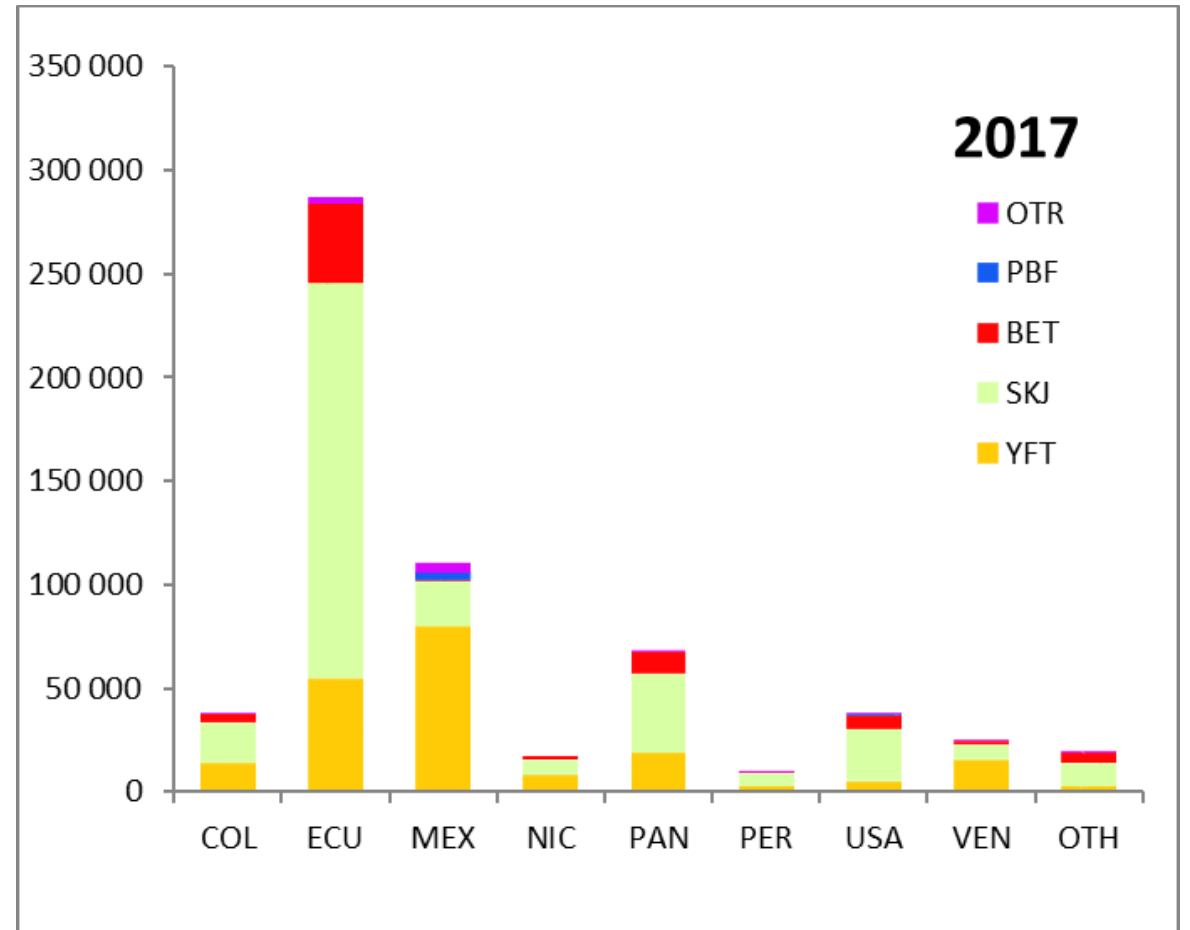
# Capturas cerqueras, por especie y pabellón

## Purse-seine catches, by species and flag

t



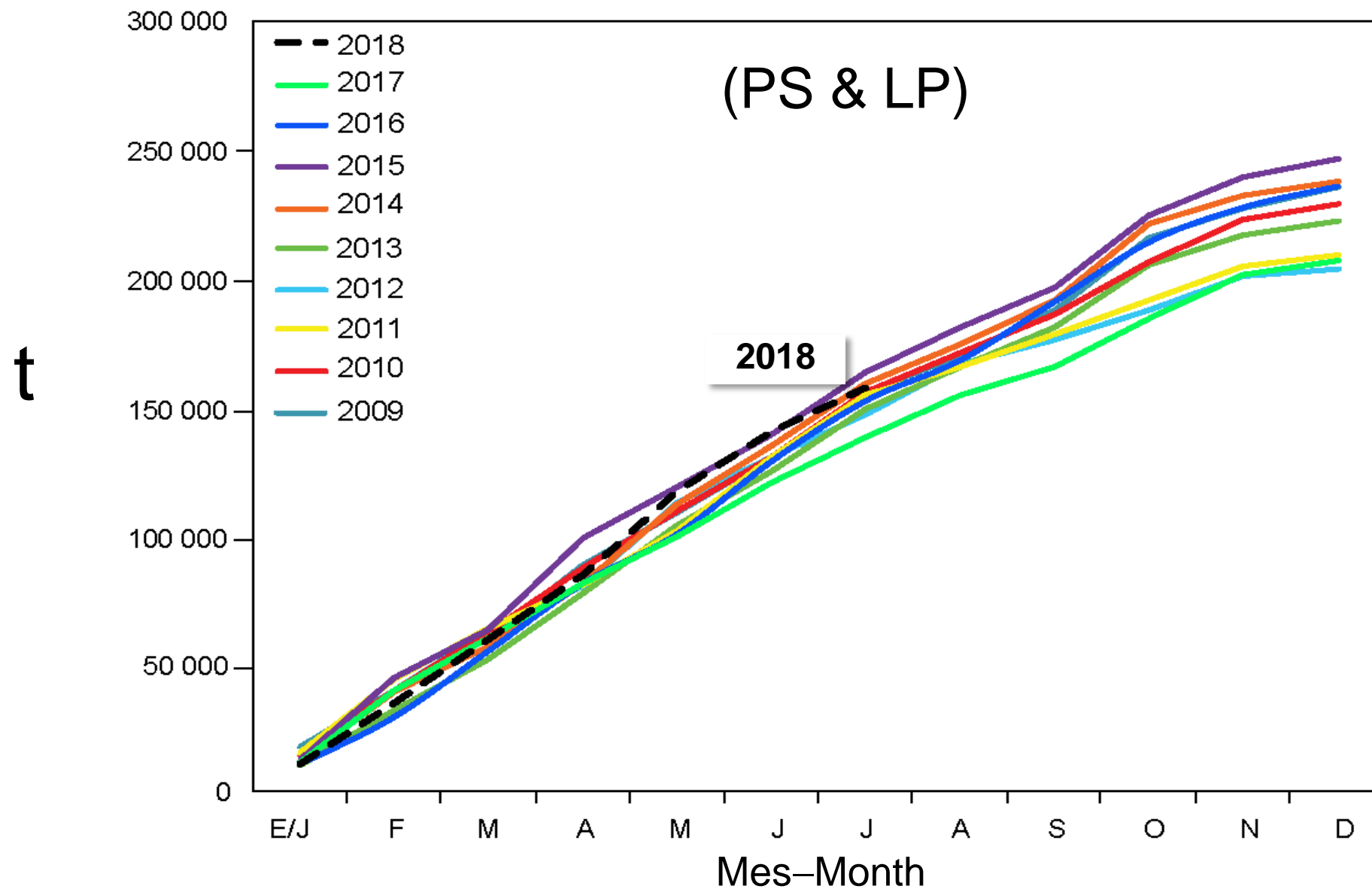
Captura total - Total catch  
650 000 t



Captura total - Total catch  
615 000 t

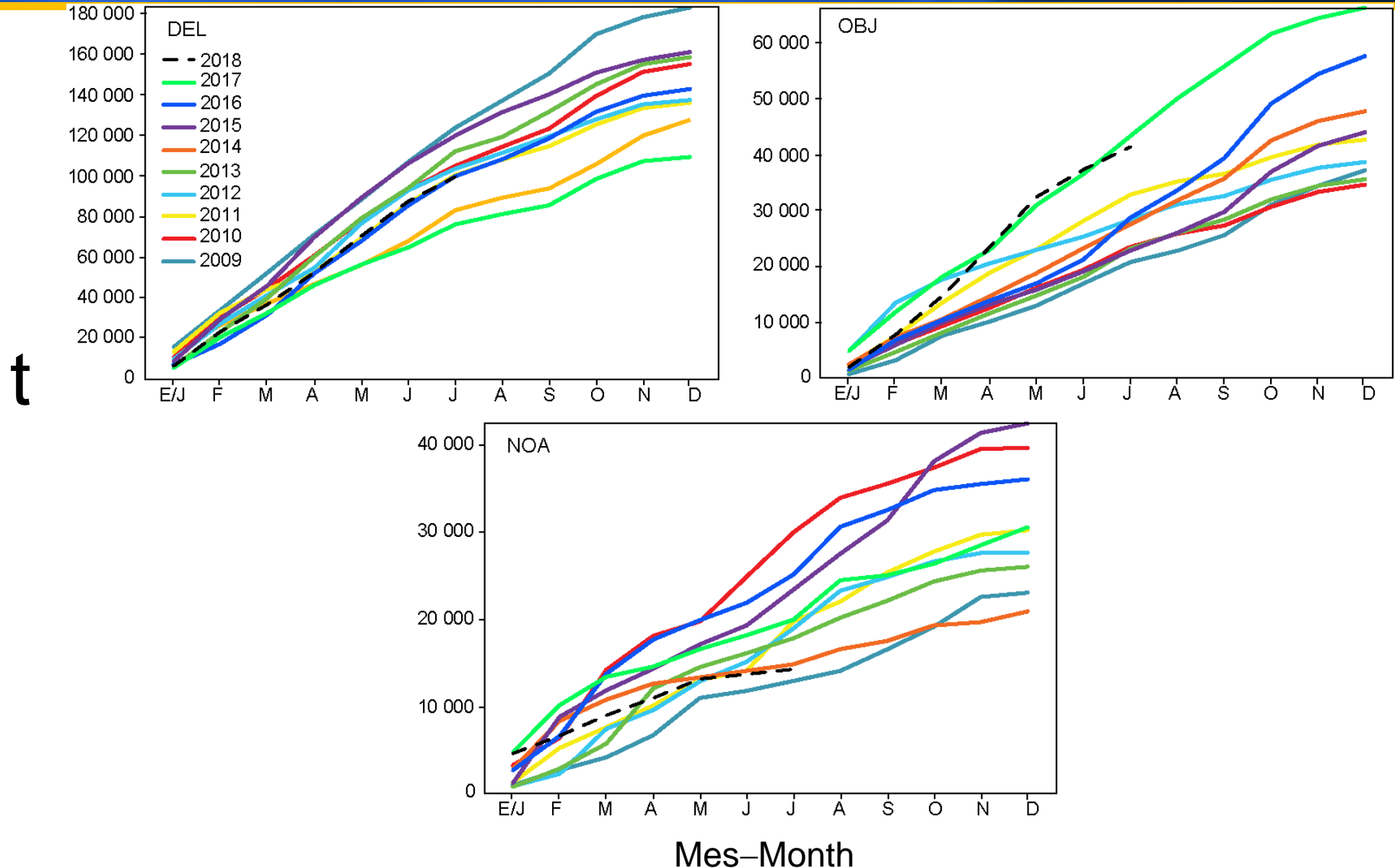


# YFT: Captura acumulativa–Cumulative catch

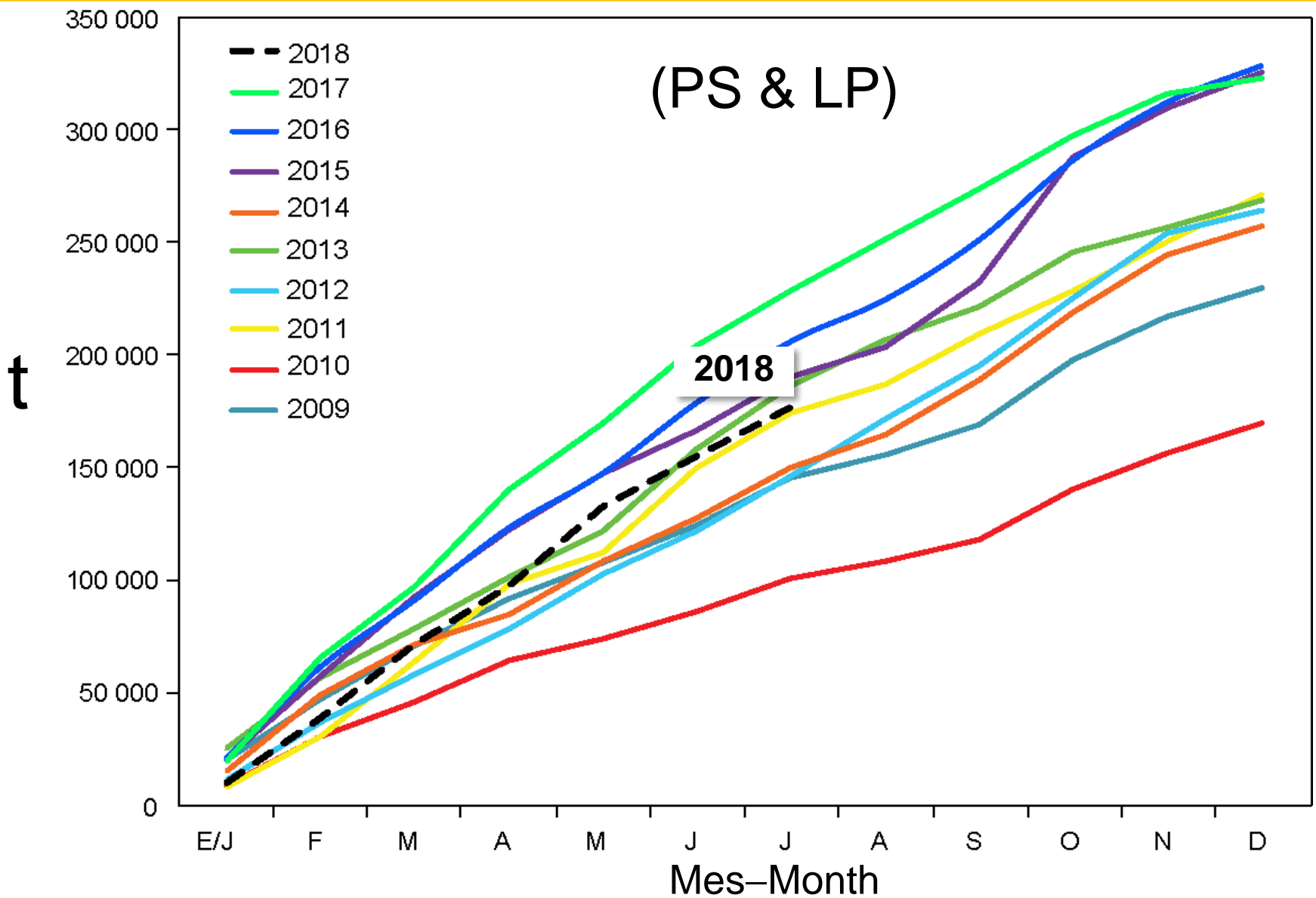


# YFT: Captura acumulativa, por tipo de lance

## Cumulative catch, by set type



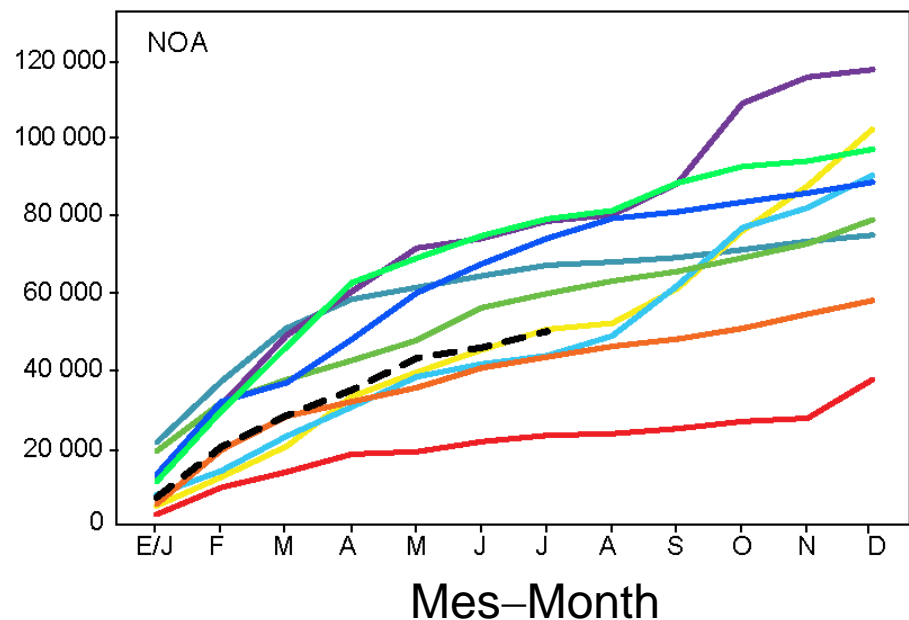
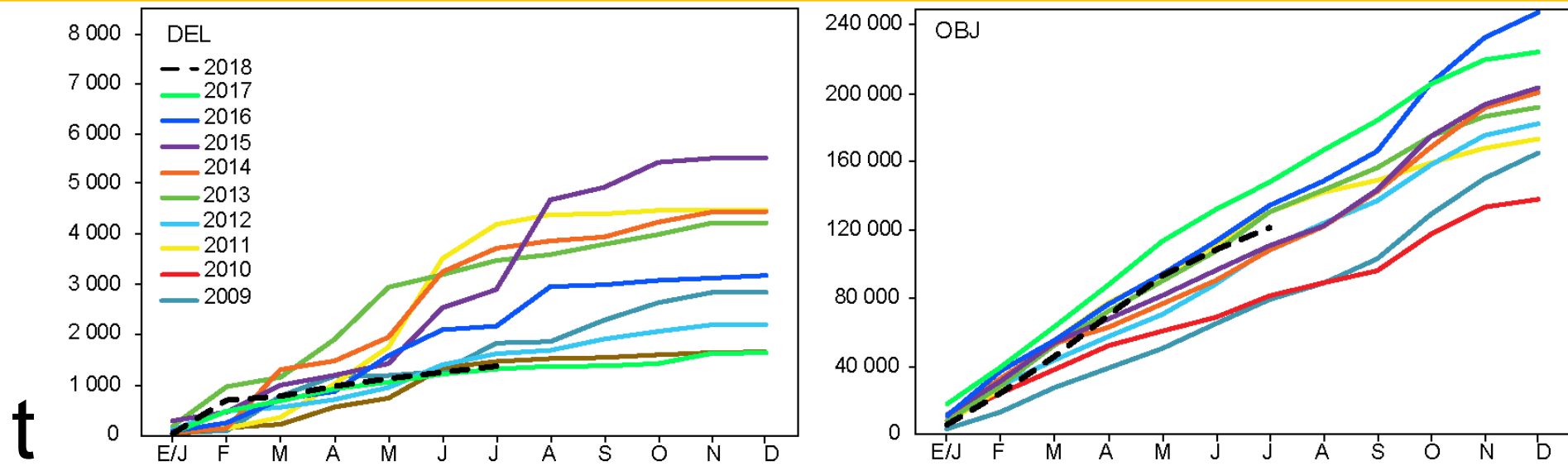
# SKJ: Captura acumulativa–Cumulative catch



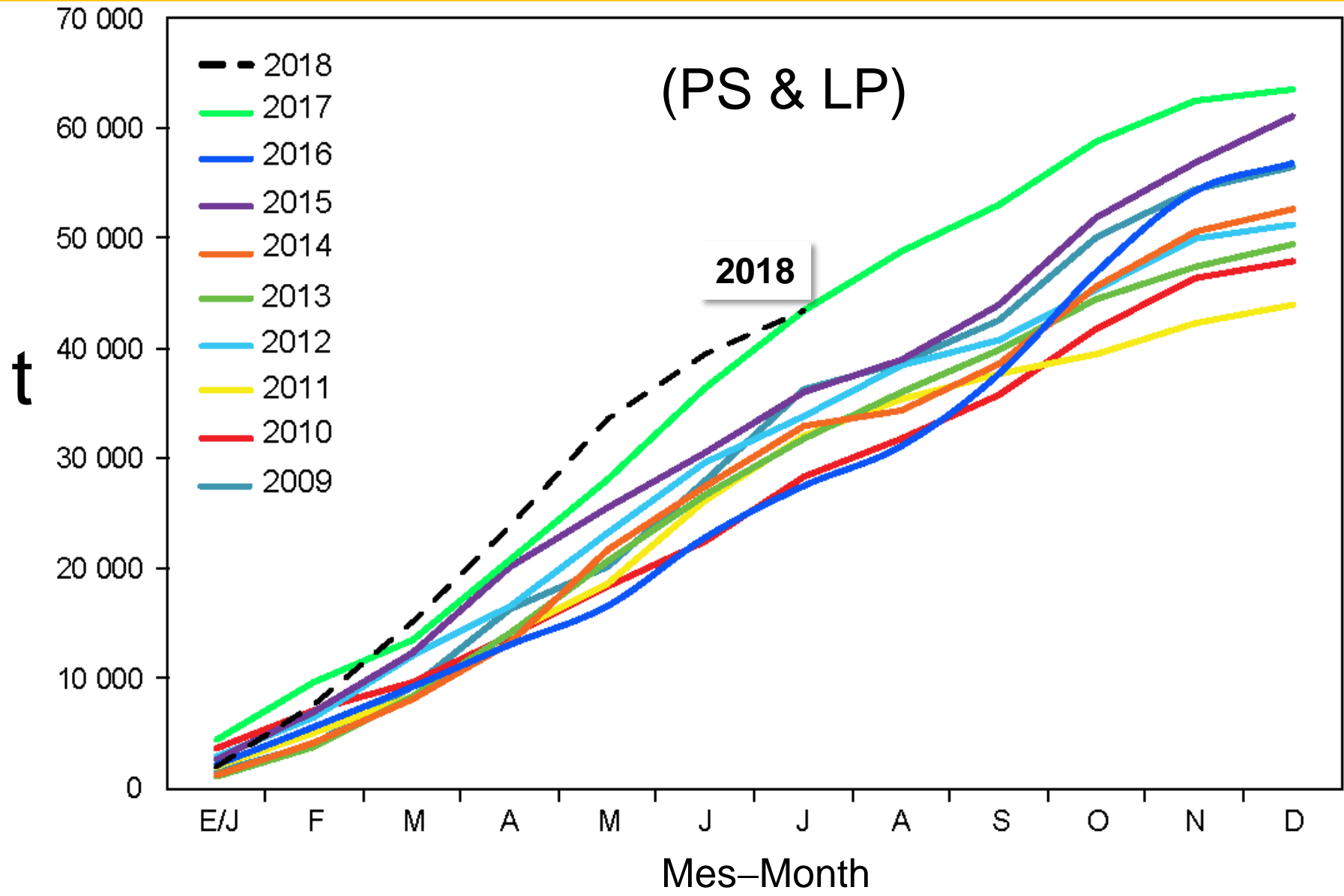


# SKJ: Captura acumulativa, por tipo de lance

## Cumulative catch, by set type

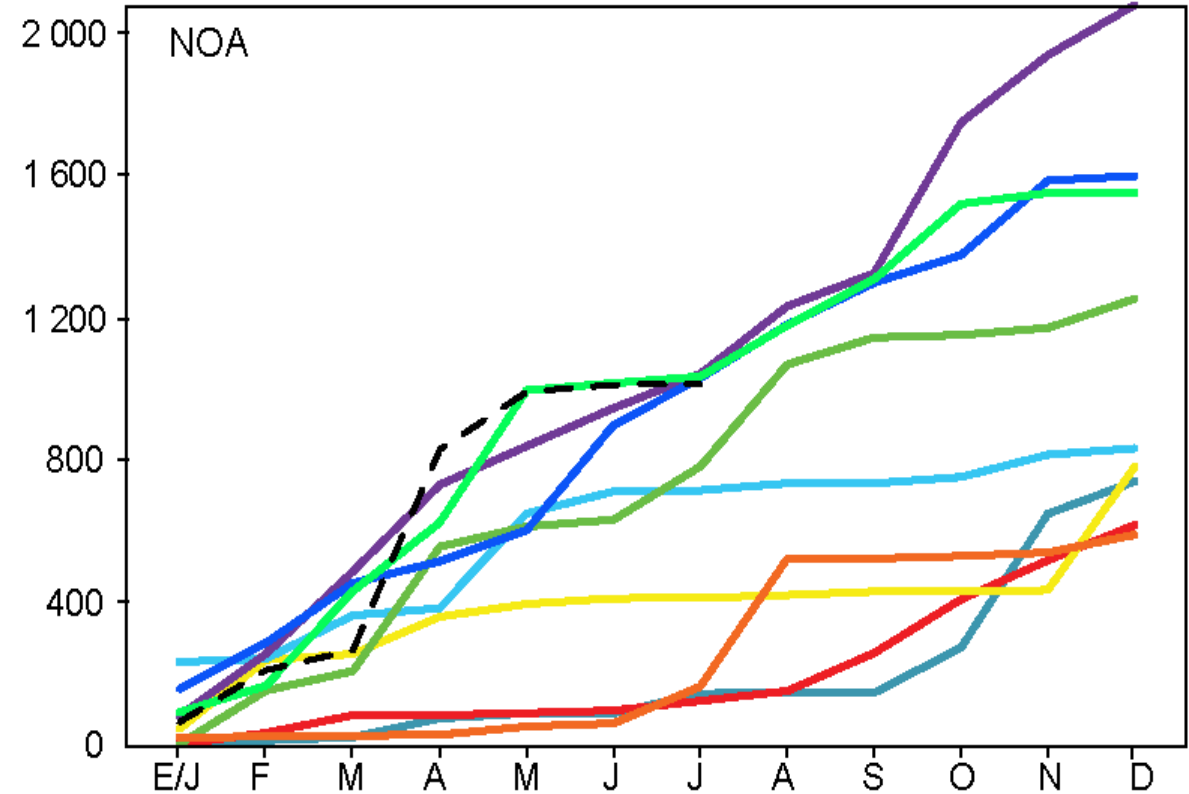
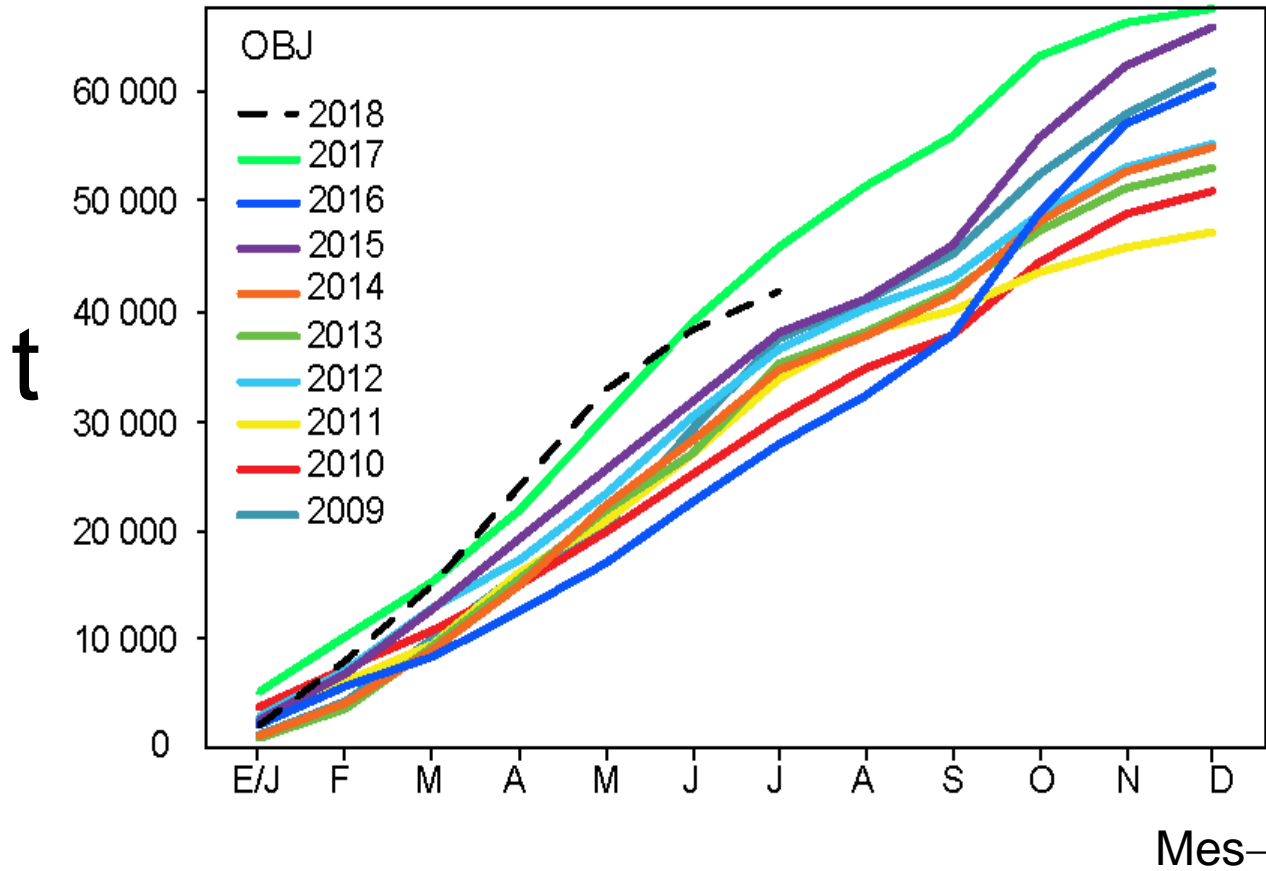


# BET: Captura acumulativa–Cumulative catch



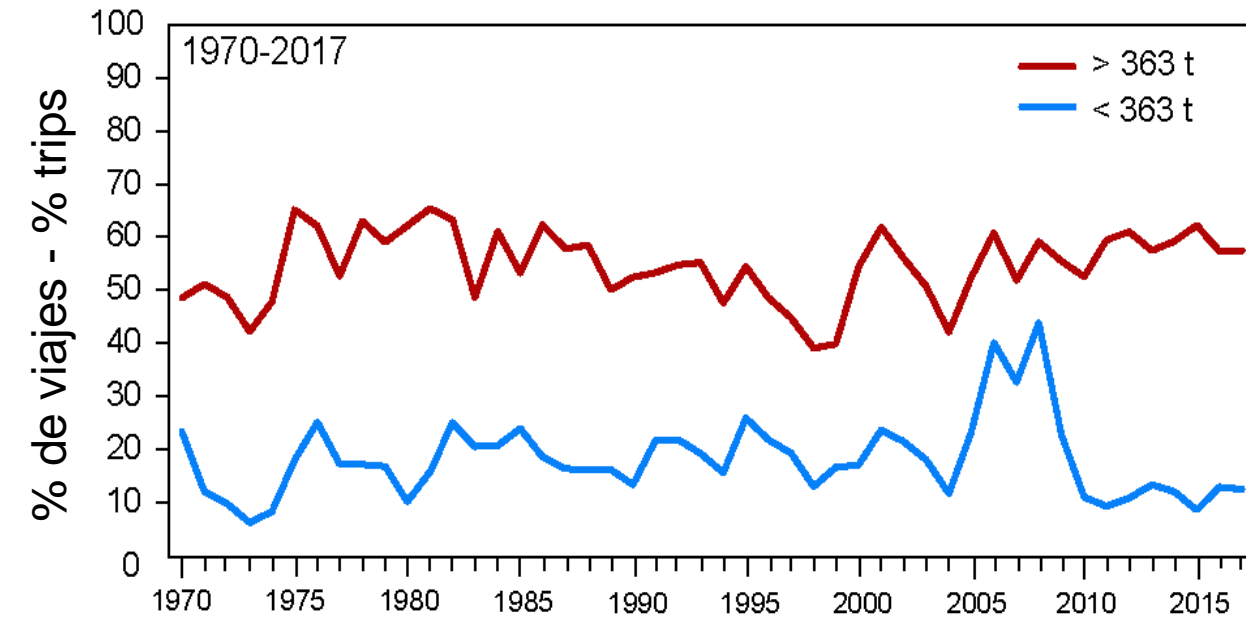
# BET: Captura acumulativa, por tipo de lance

## Cumulative catch, by set type

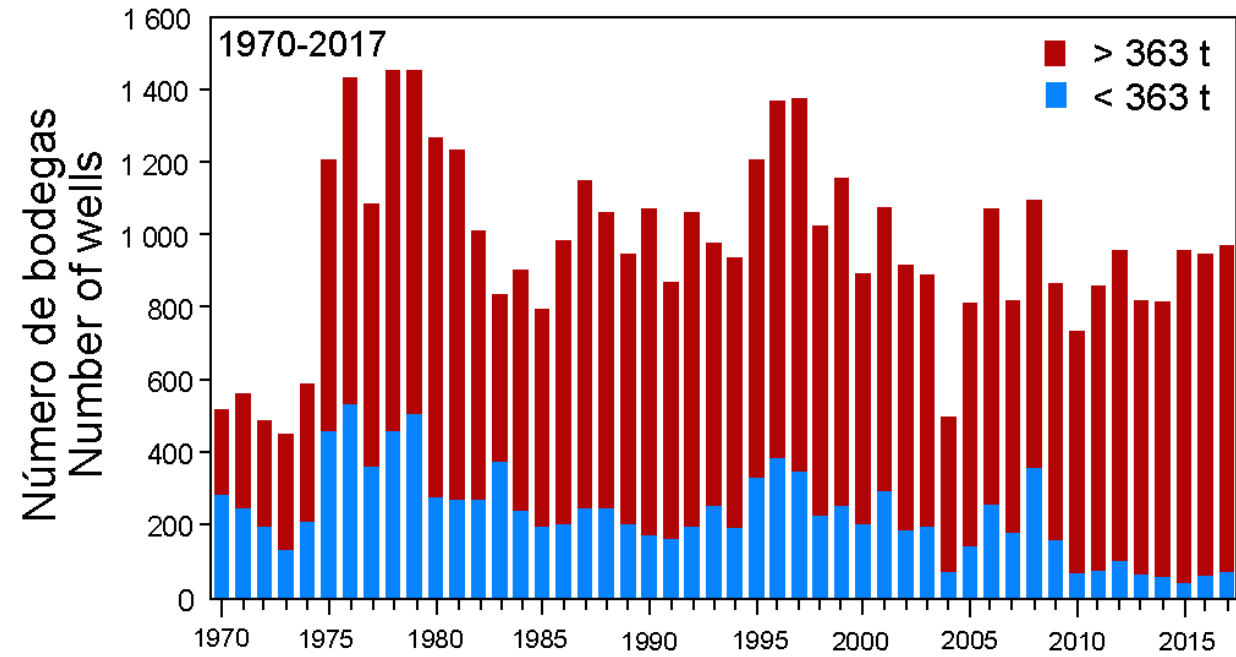


# Muestreo en las oficinas de campo de la CIAT

## Sampling at IATTC field offices



Muestreo de frecuencia de tallas  
Length-frequency sampling



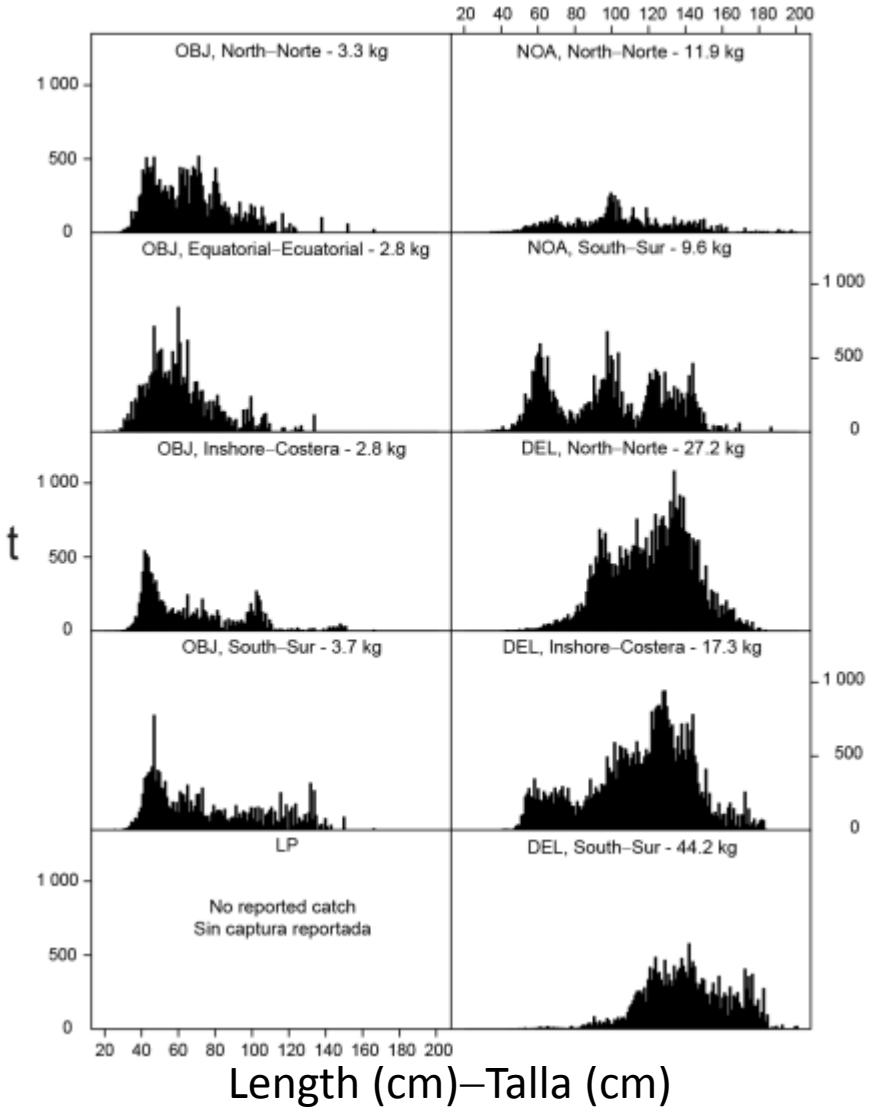
Muestreo de bodegas – Well sampling

# YFT: Composición por talla, capturas cerqueras y cañeras

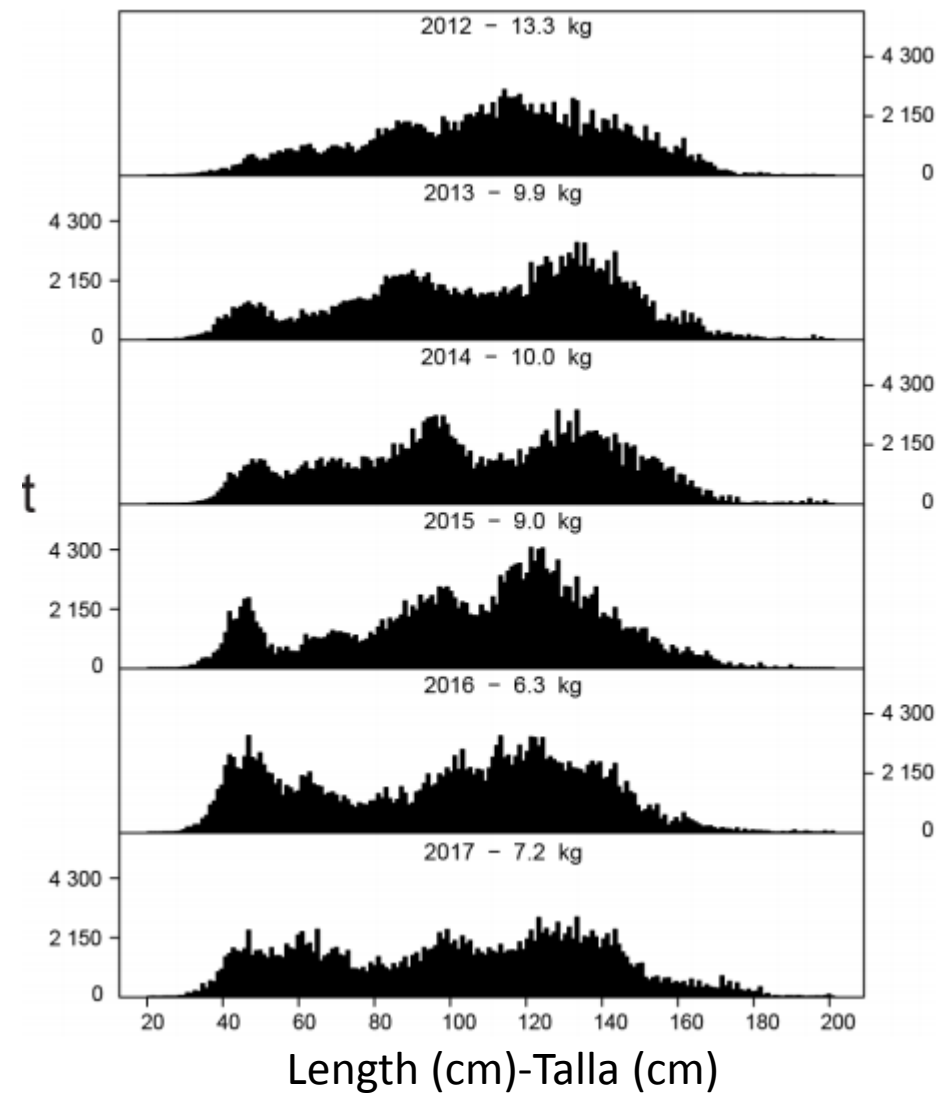
## Length composition, purse-seine and pole-and-line catches



2017, por área-by area



2012 - 2017

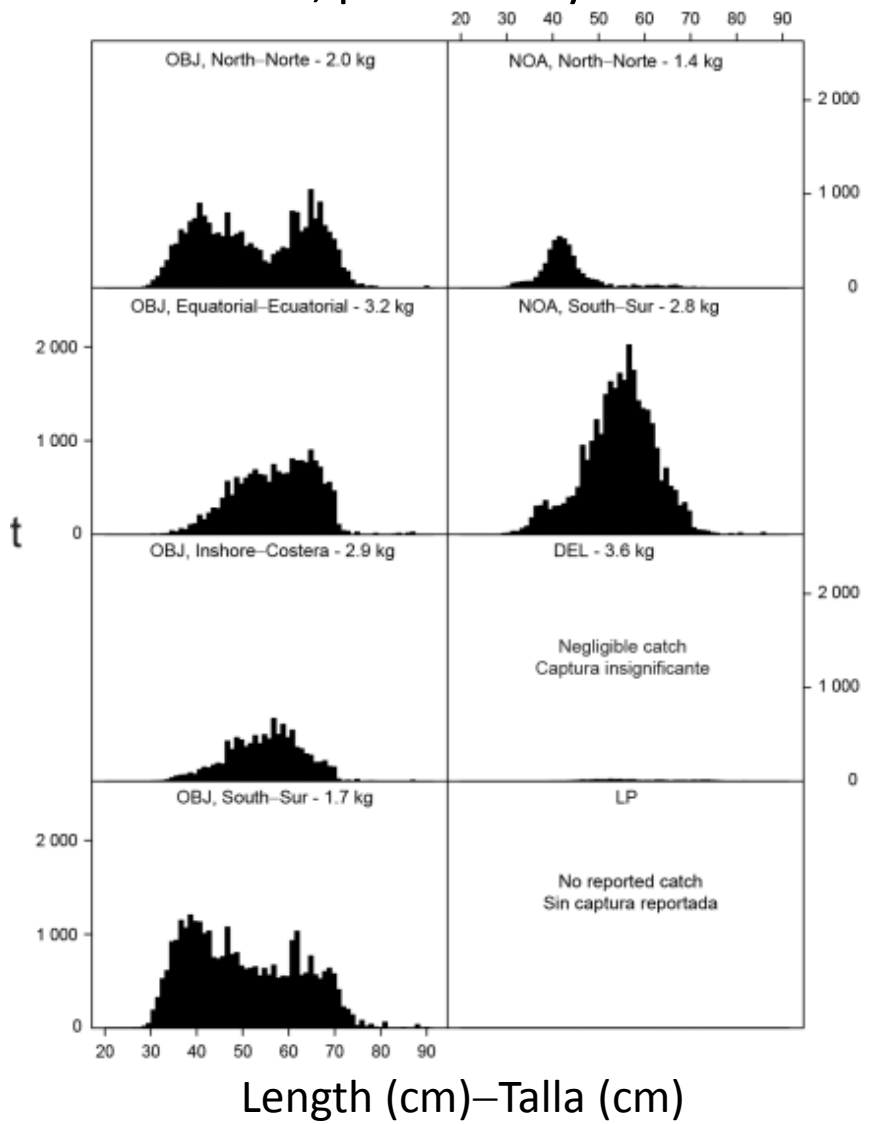




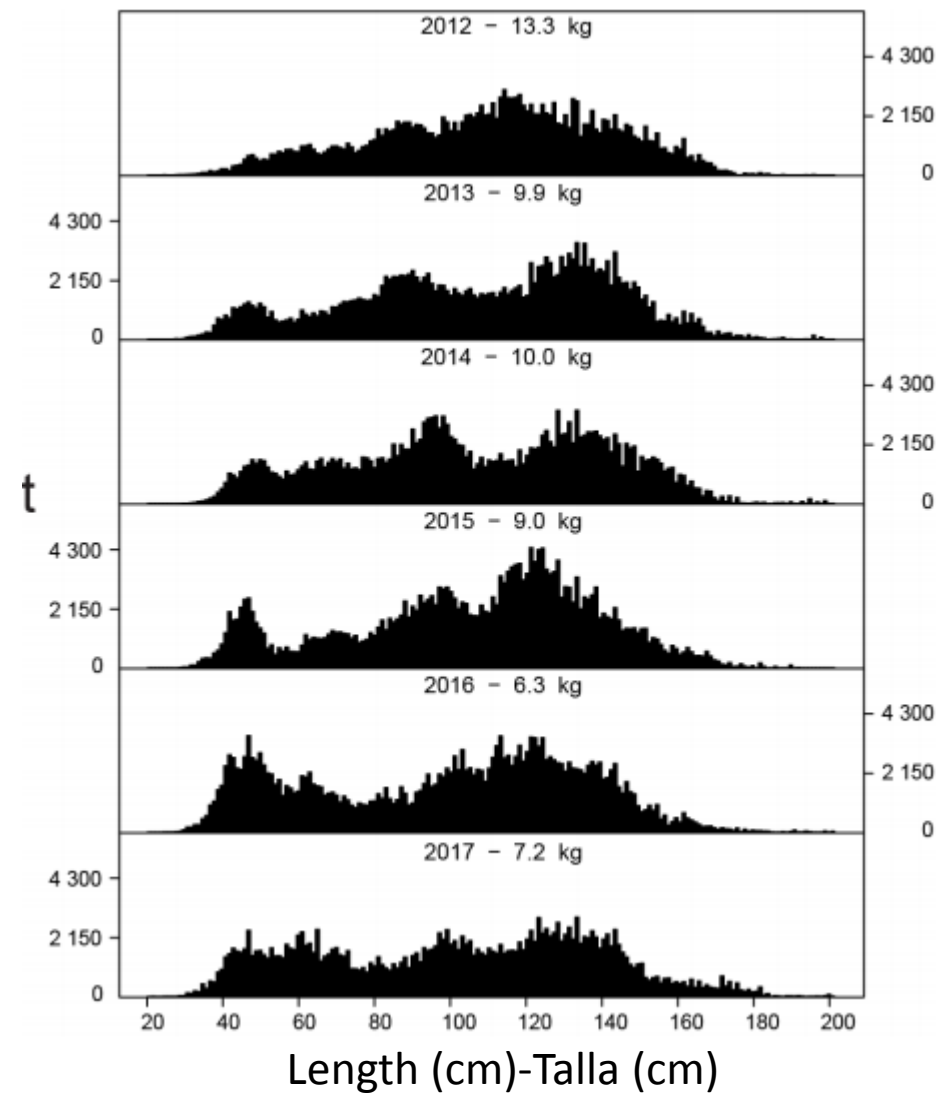
# SKJ: Composición por talla, capturas cerqueras Length composition, purse-seine catches



2017, por área-by area



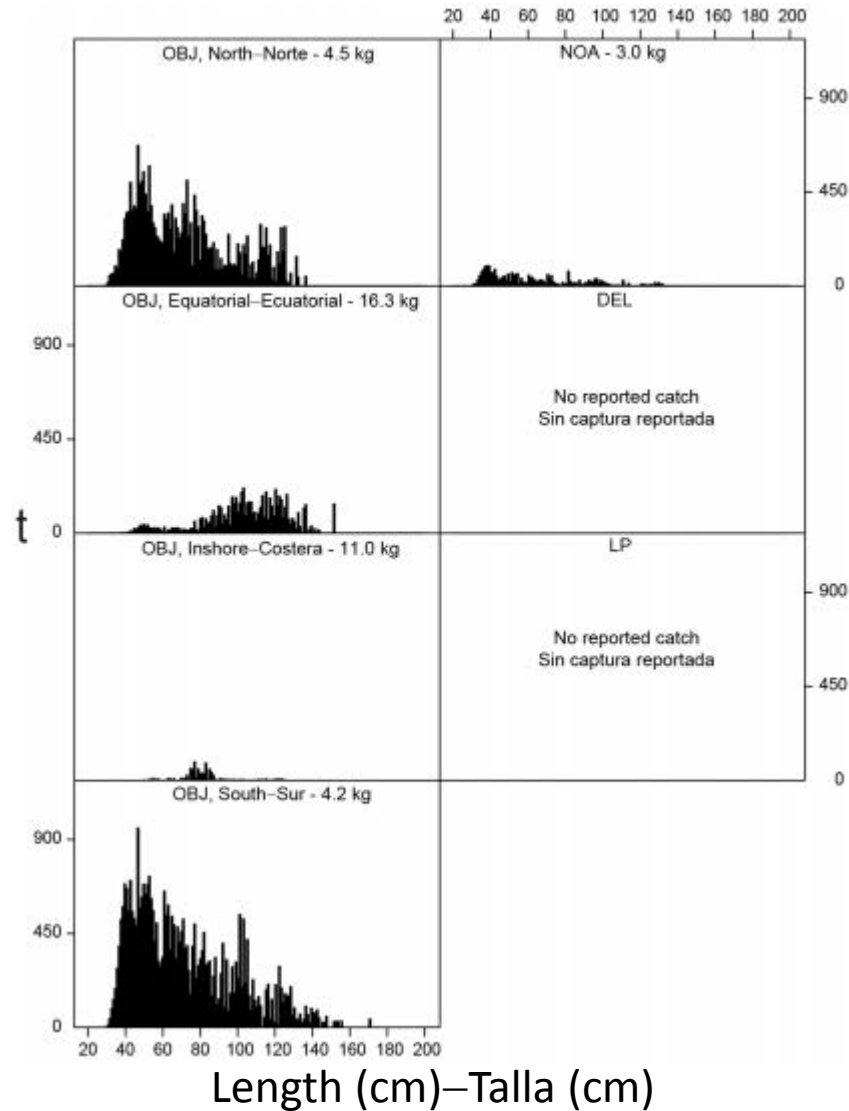
2012 - 2017



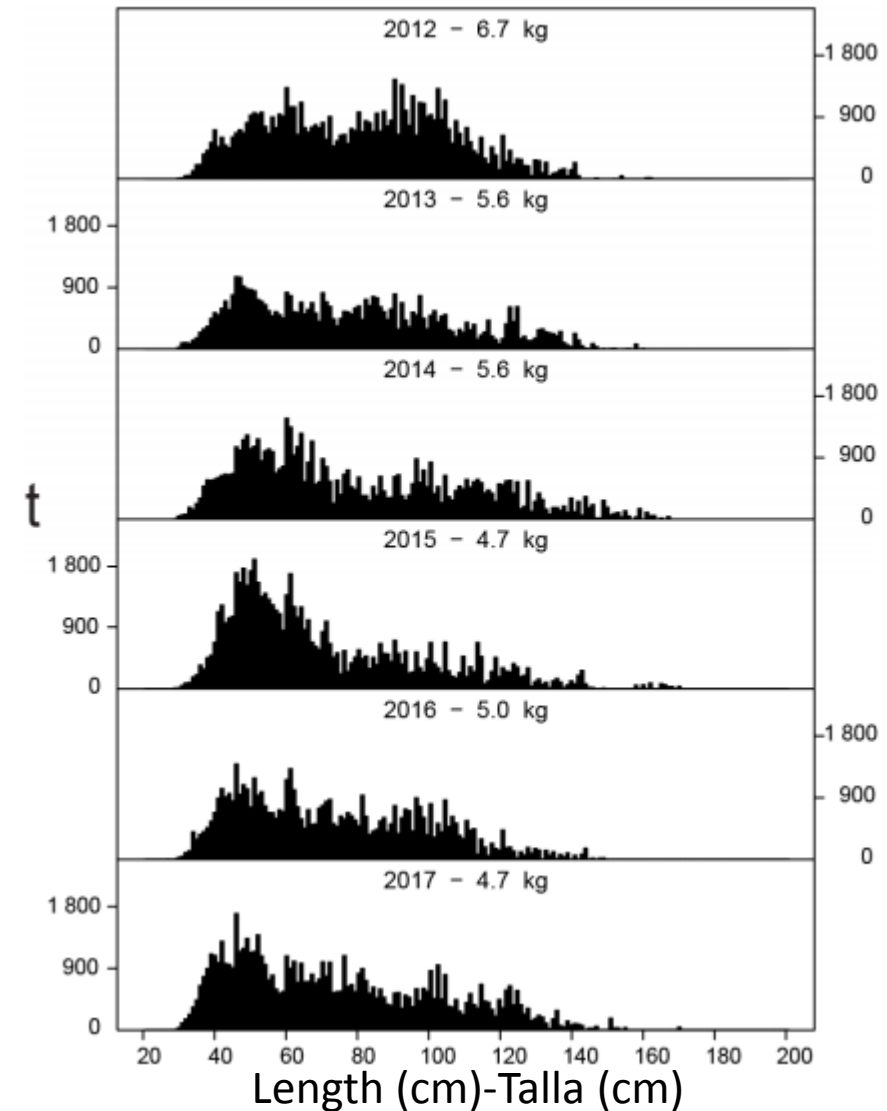
# BET: Composición por talla, capturas cerqueras Length composition, purse-seine catches



### 2017, por área-by area



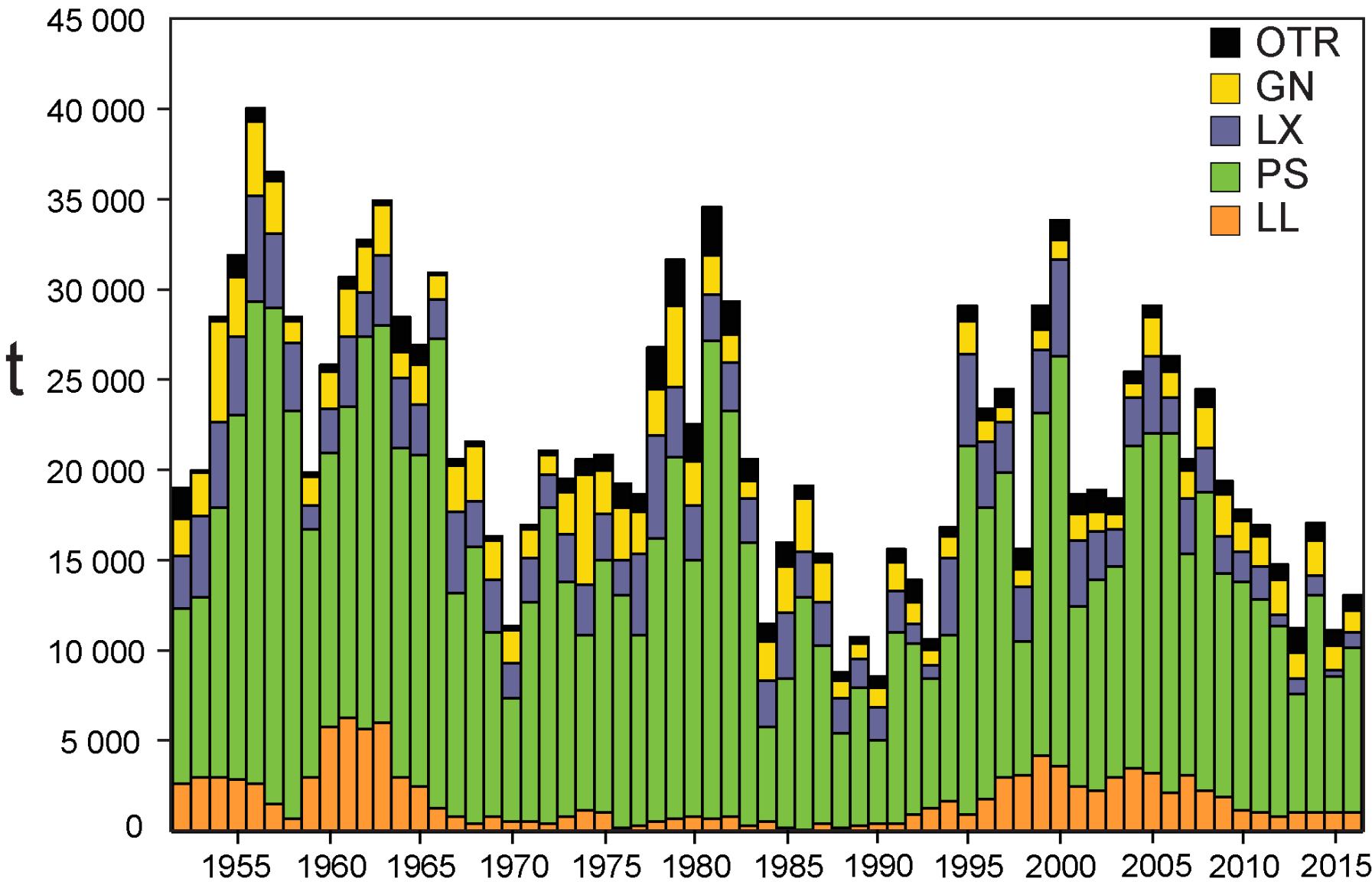
### 2012 - 2017



# Aleta azul del Pacífico–Pacific bluefin tuna



# PBF: Capturas en el OPO, por arte Catches in the EPO, by gear

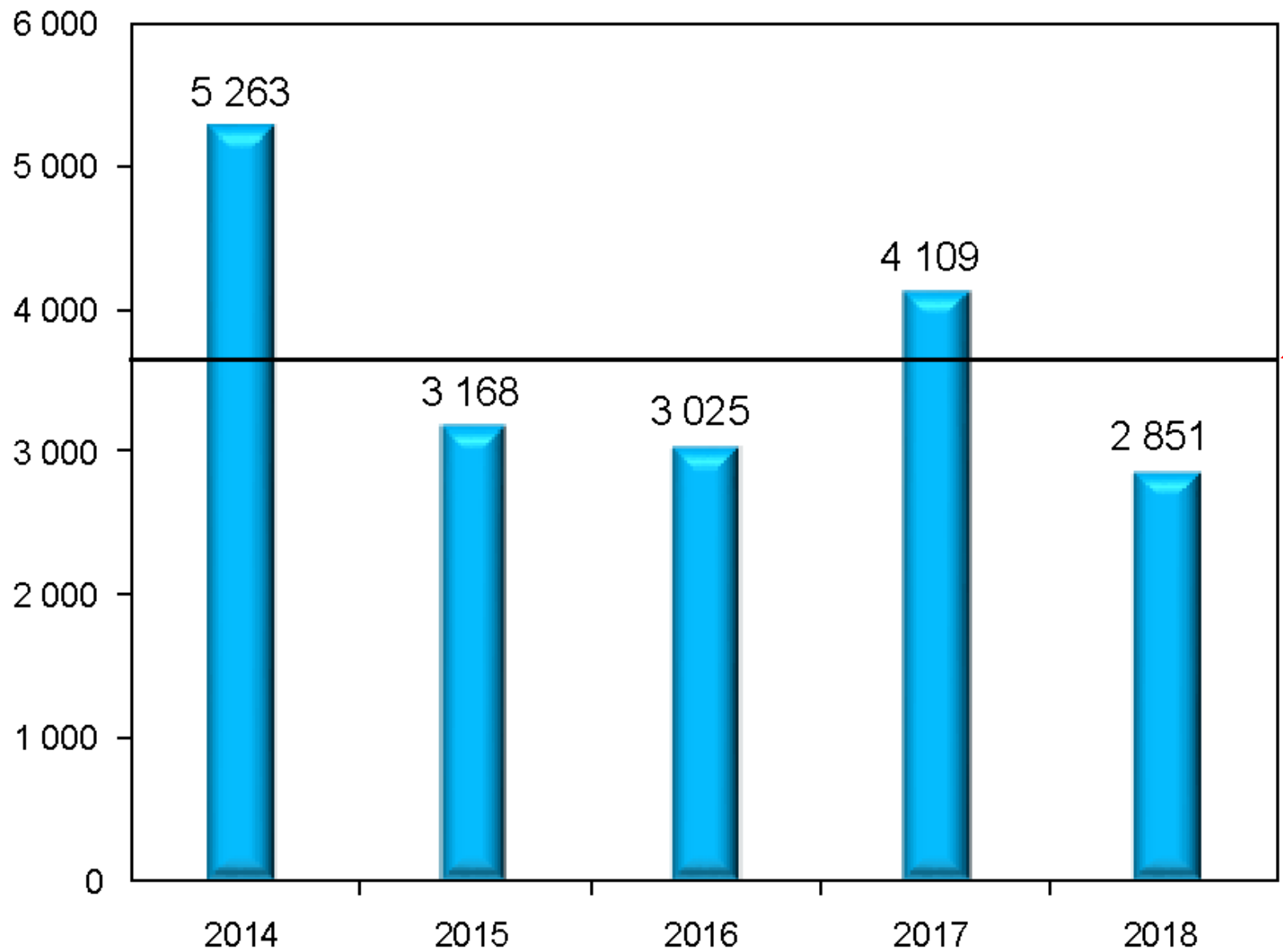


Artes de pesca—Fishing gears:  
 OTR: otras-others  
 GN: red de transmalle-gillnet  
 LX: sedal y anzuelo-hook and line  
 PS: red de cerco-purse seine  
 LL: palangre-longline

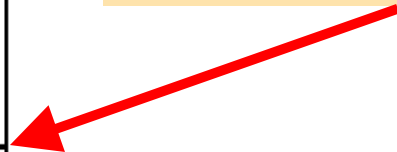


# PBF: Capturas cerqueras en el OPO

## Purse-seine catches in the EPO

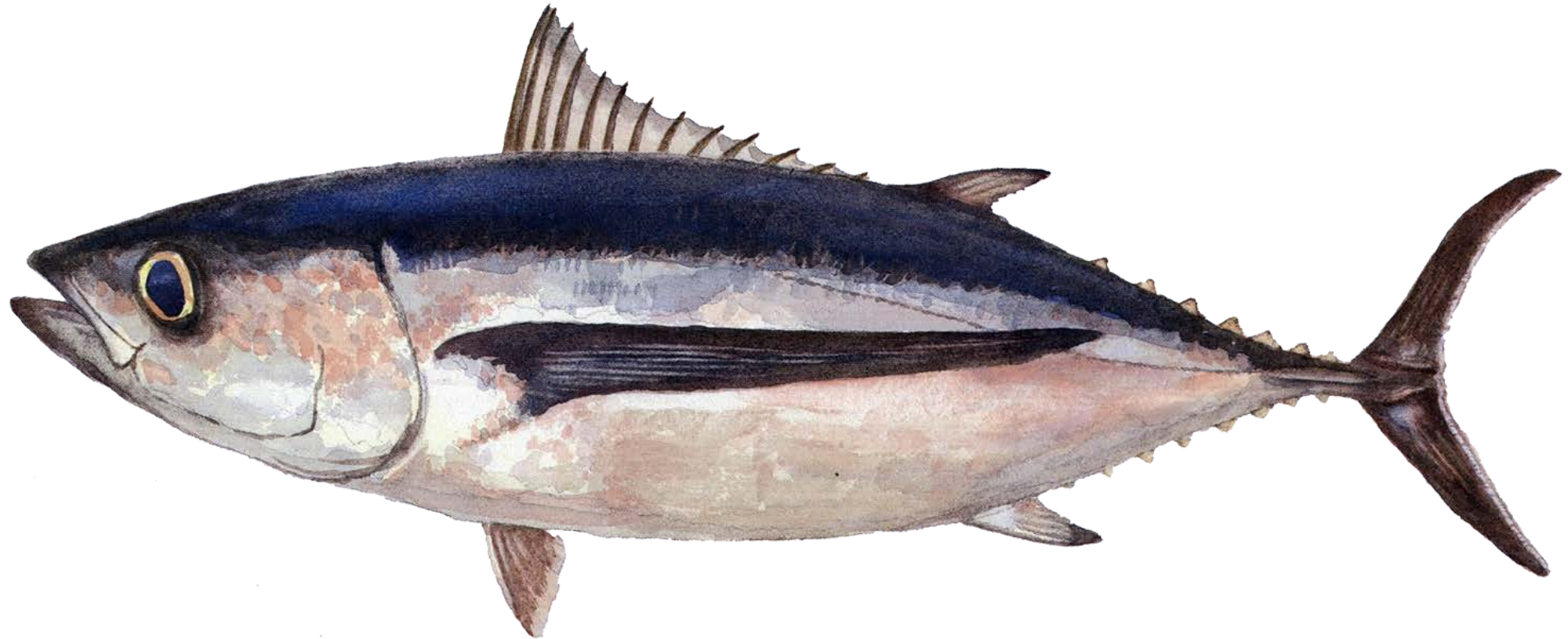


**Promedio 5 años**  
**5-year average**  
**3 683 t**





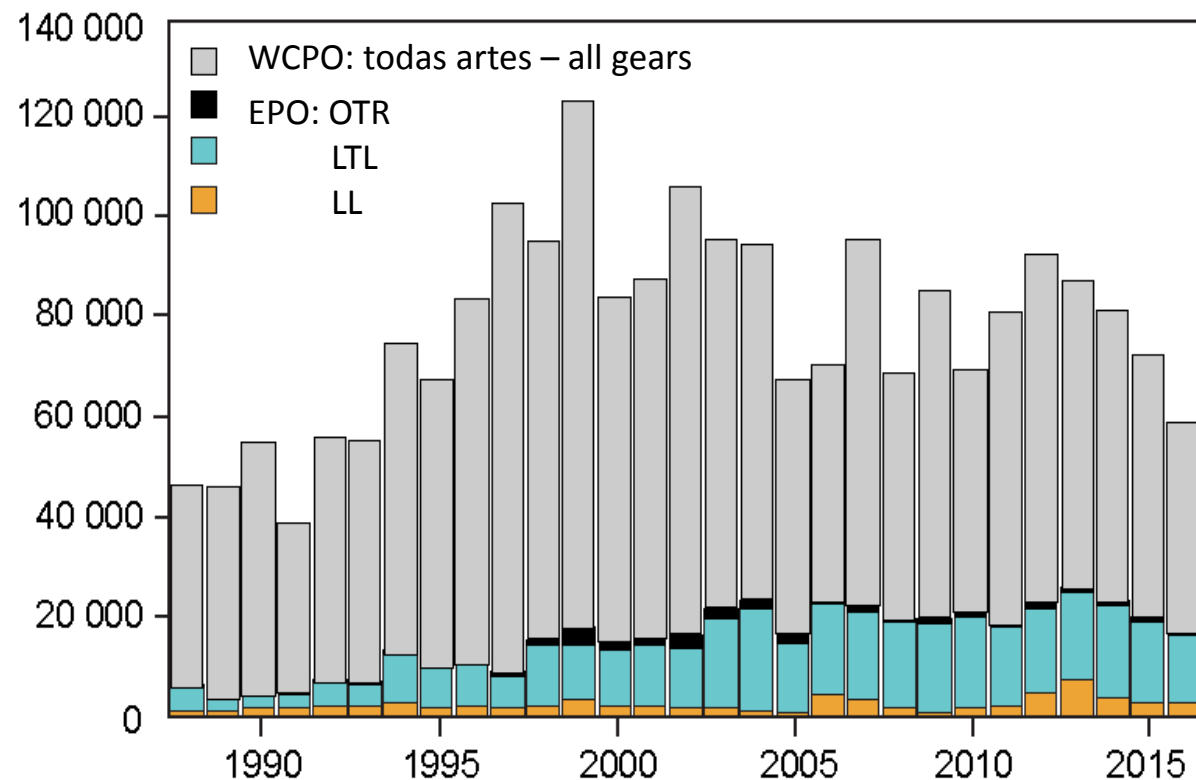
# Albacora–Albacore



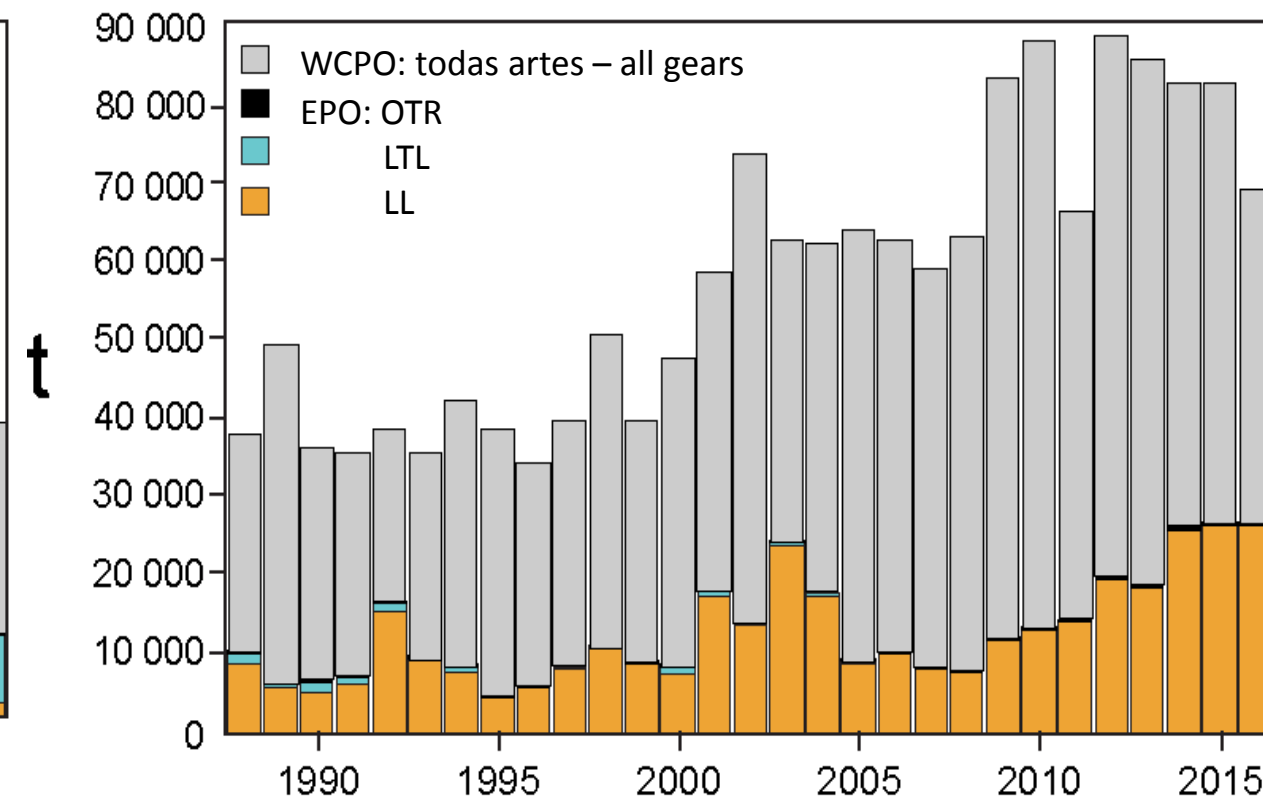
# ALB: Capturas retenidas—Retained catches



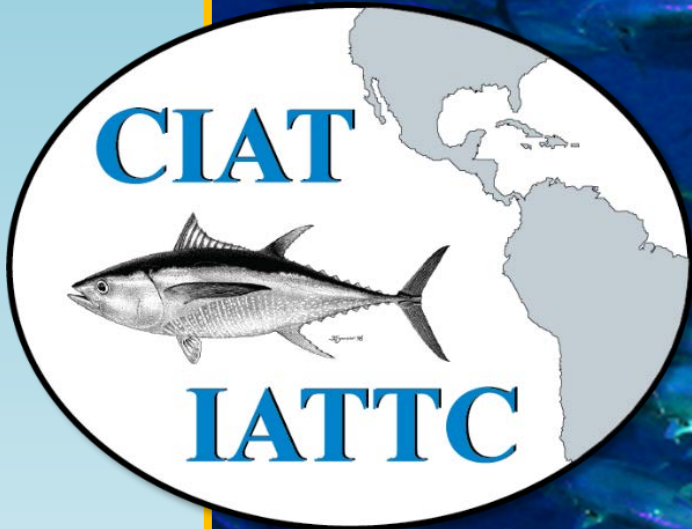
## Norte—North



## Sur—South



Artes de pesca—Fishing gears:  
 OTR: otras-others  
 LTL: curricán-troll  
 LL: palangre-longline



¿Preguntas?  
Questions?

