

Comisión Interamericana del Atún Tropical
Inter-American Tropical Tuna Commission

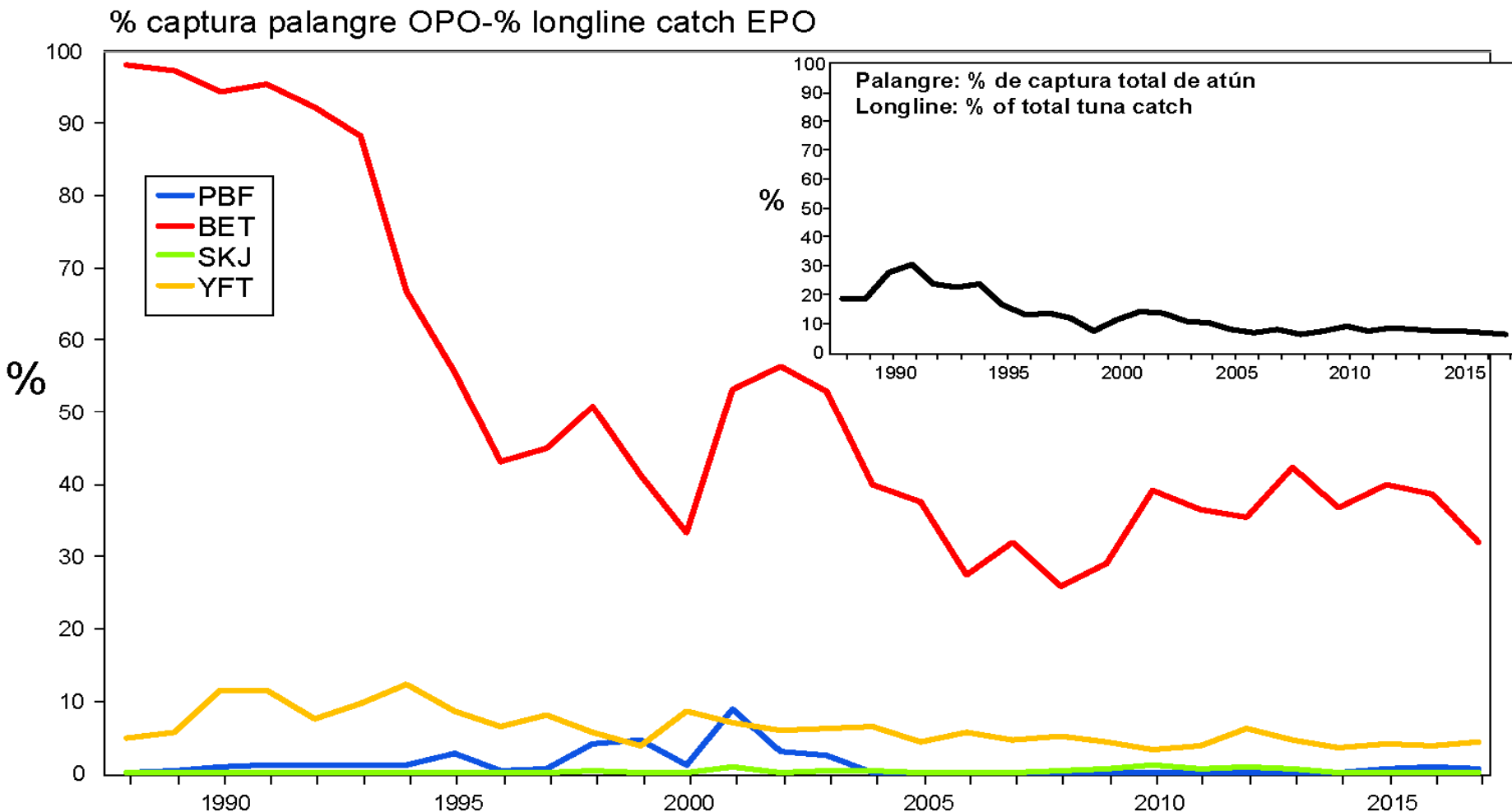


Review of international regulations in the Pacific Ocean for longline fisheries
that may cause changes in fish targets

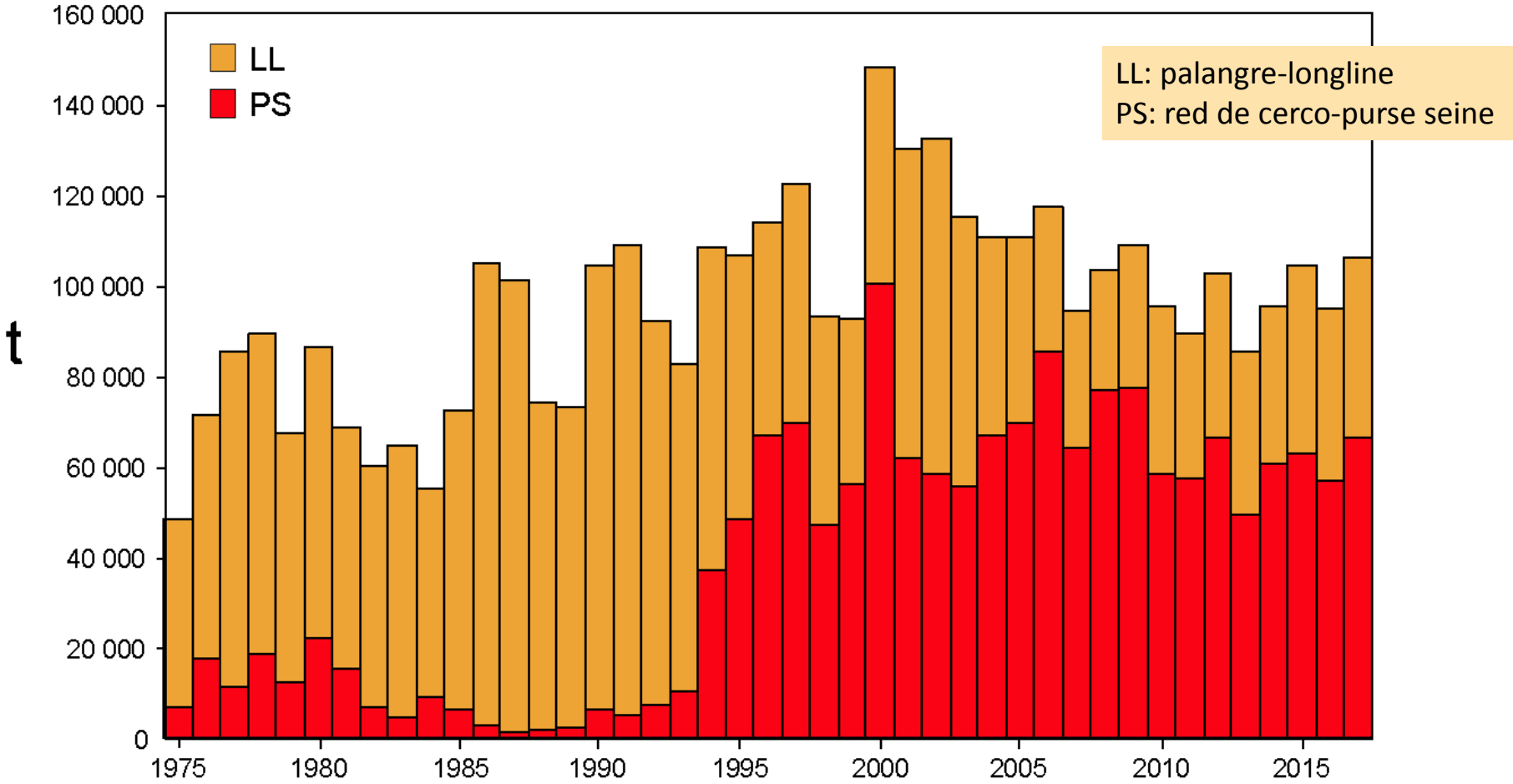
Guillermo Compean

Workshop in Long-line data
11-15 February, 2019 - San Diego, California—USA

OPO captura retenida por LL–EPO retained catch by LL



BET - Captura por arte de pesca—Catch by gear type



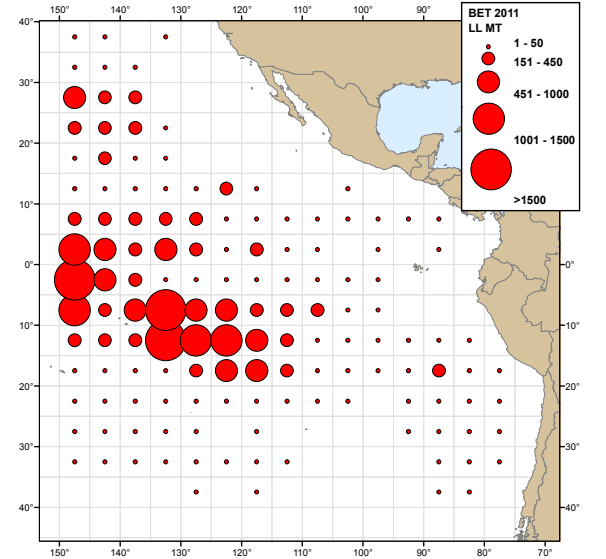
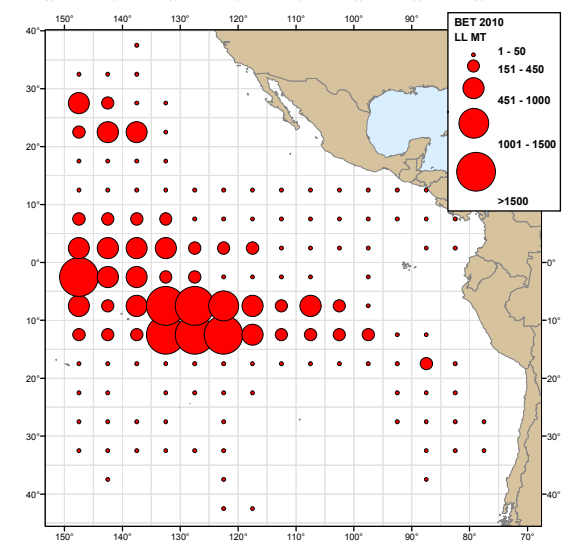
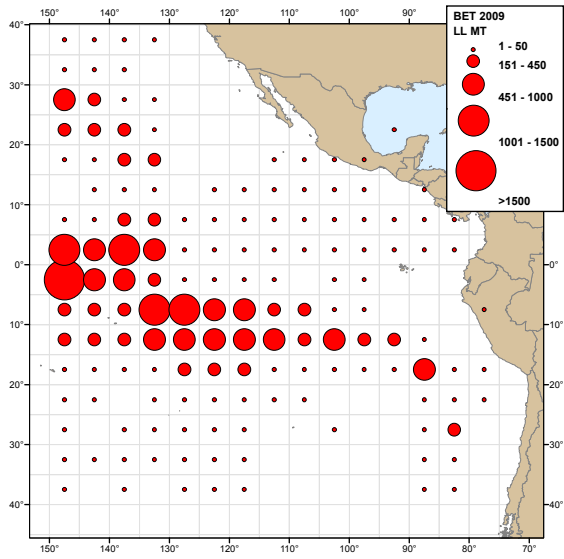
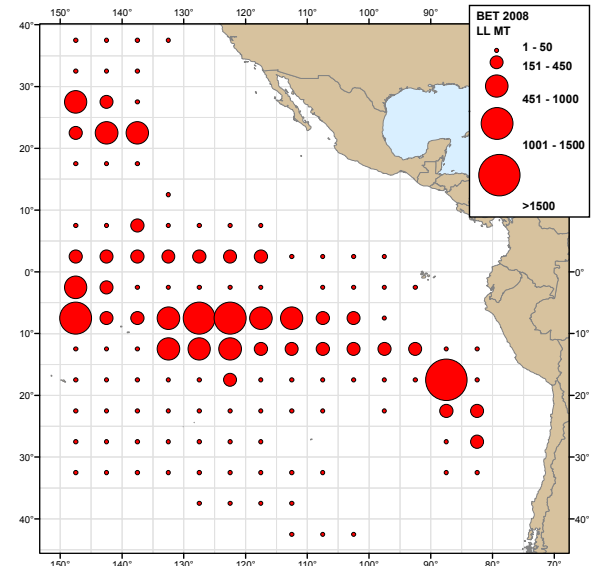
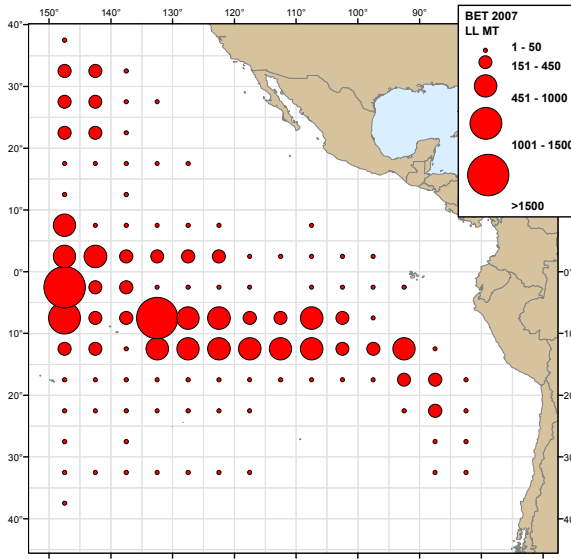
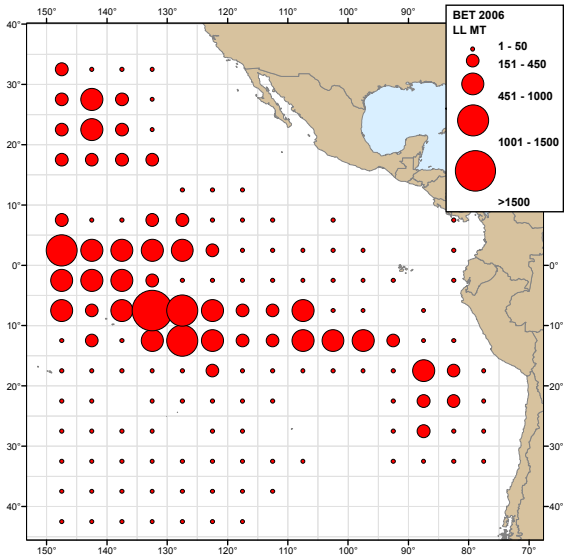
EPO BIGEYE CATCH LIMITS ADOPTED FOR LONGLINE FLEETS

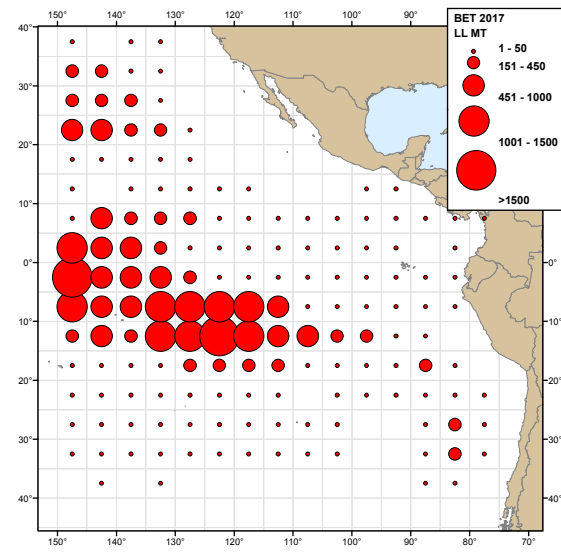
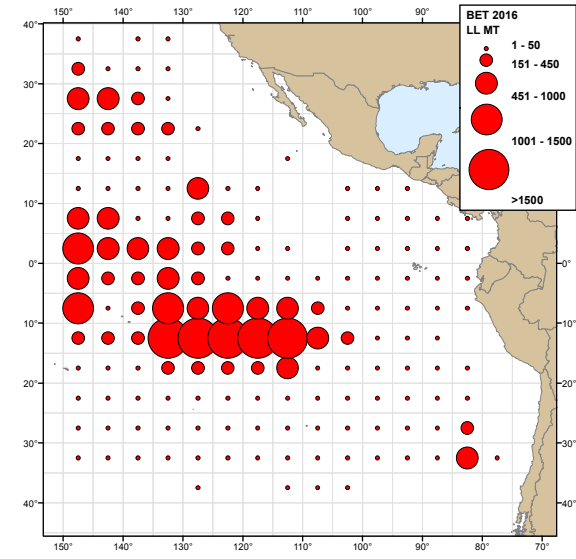
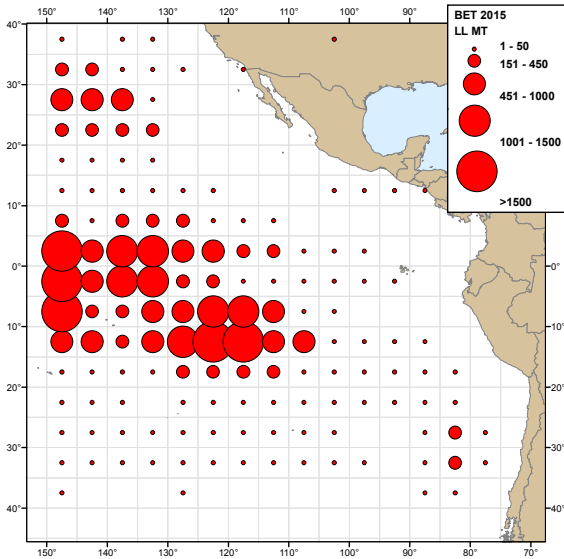
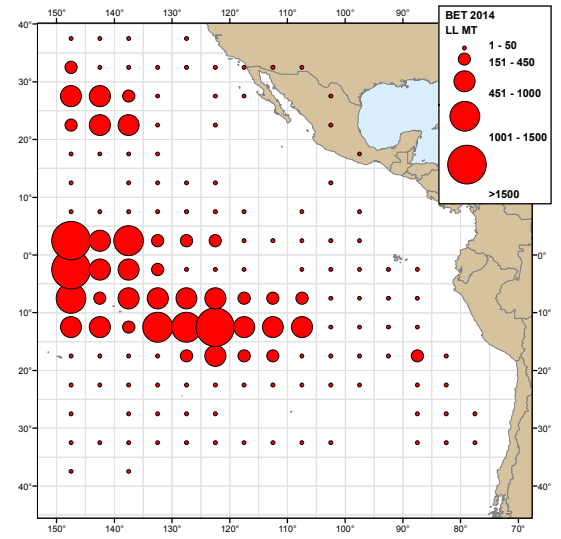
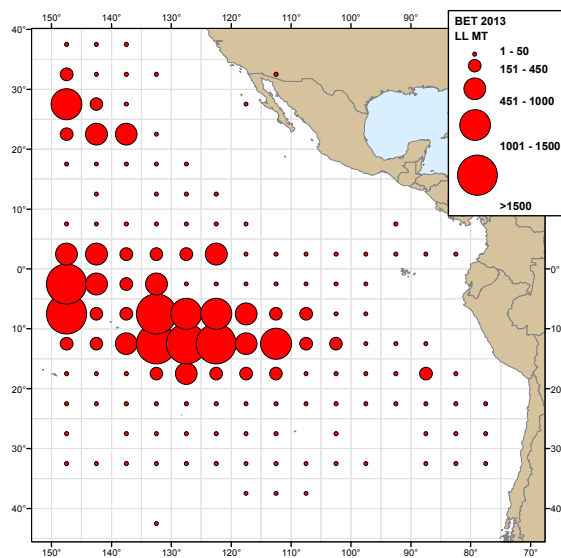
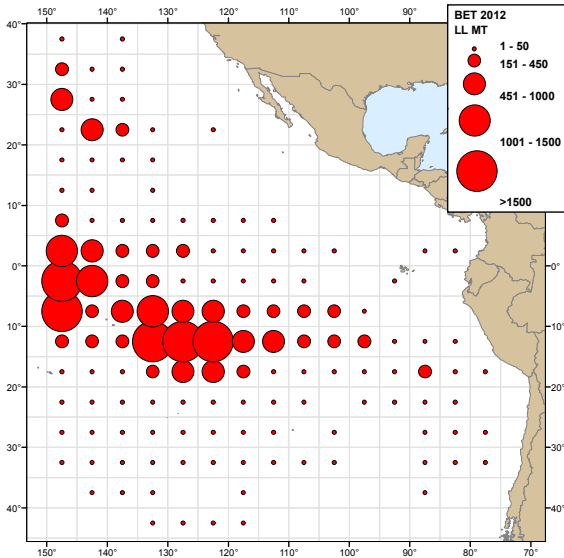
	2005-2007	2008	2009	2010-2016	2017	2018-2020*
CHINA	2,639	2,533	2,533	2,507	2,507	2,507
JAPAN	34,076	32,713	32,713	32,372	32,372	32,372
KOREA	12,576	12,073	12,073	11,947	11,947	11,947
CHINESE TAIPEI	7,953	7,635	7,635	7,555	7,555	7,555
USA						750
TOTAL	57,244	54,954	54,954	54,381	54,381	55,131

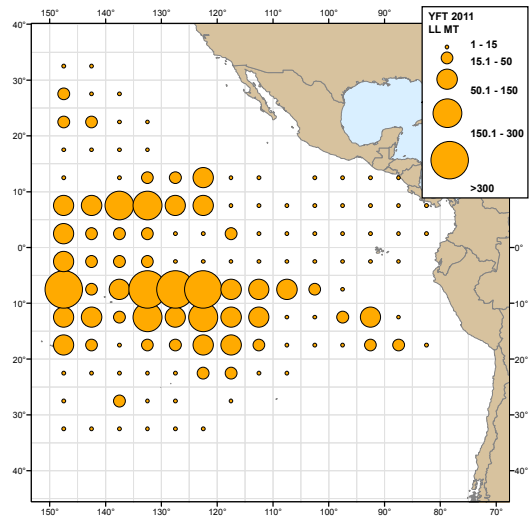
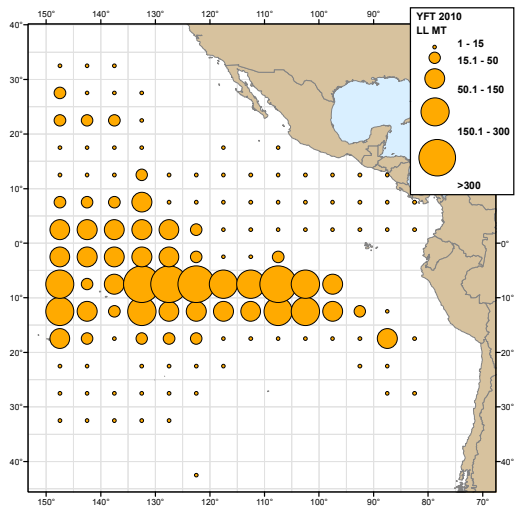
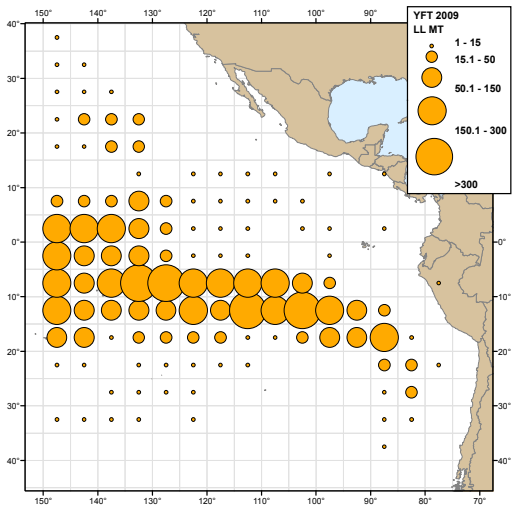
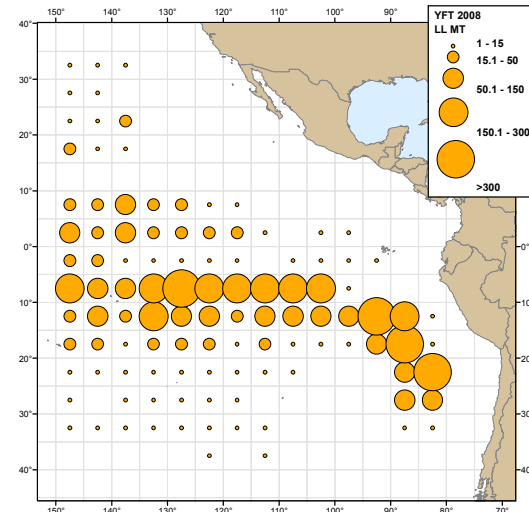
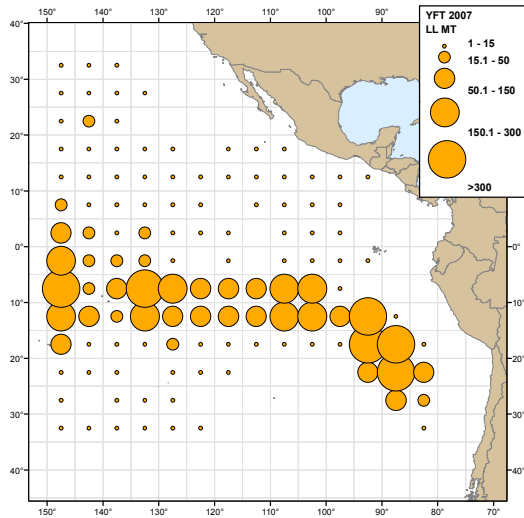
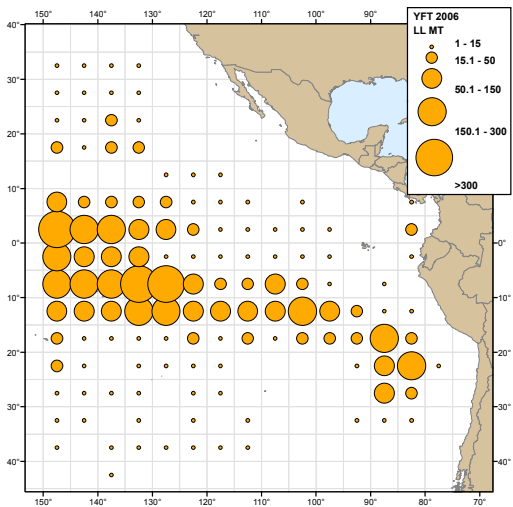
*Others CPC's limit to maximum of (2001 catch or 500t)

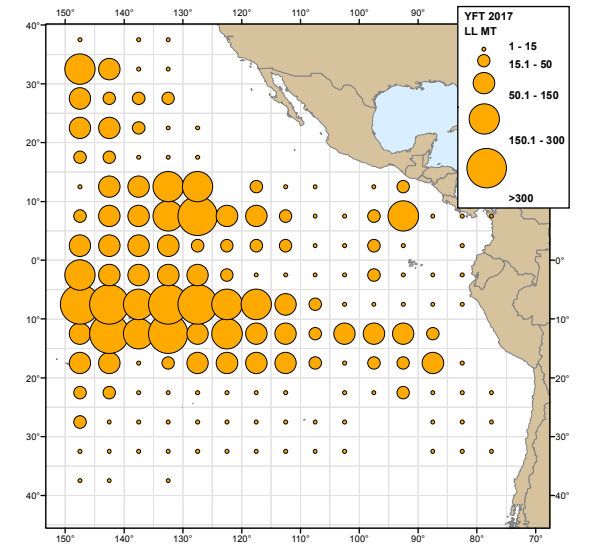
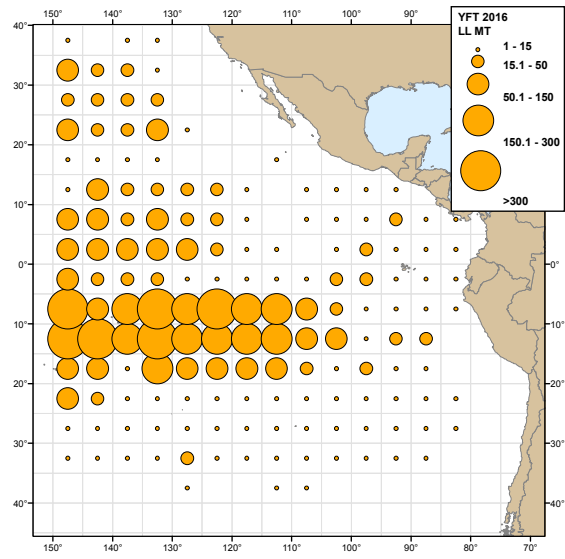
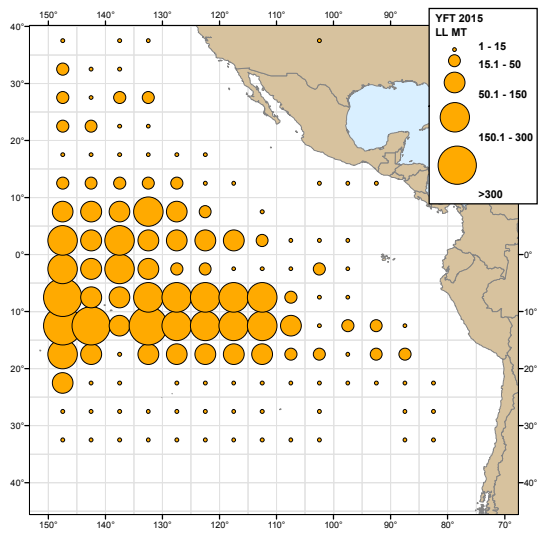
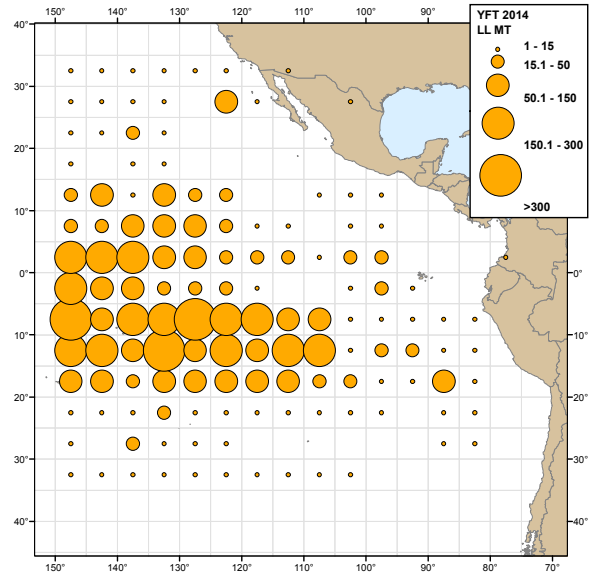
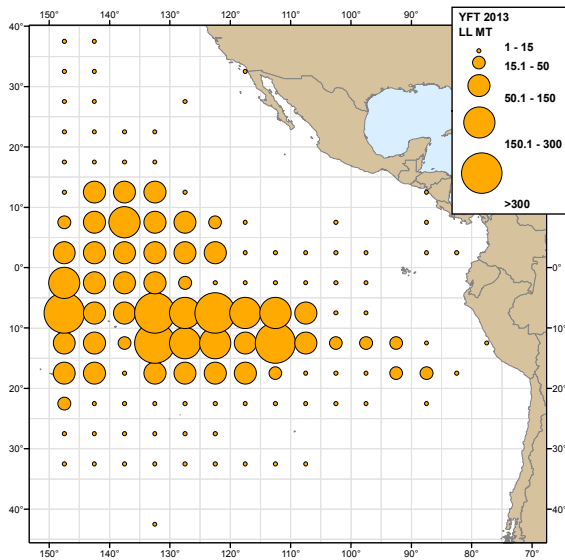
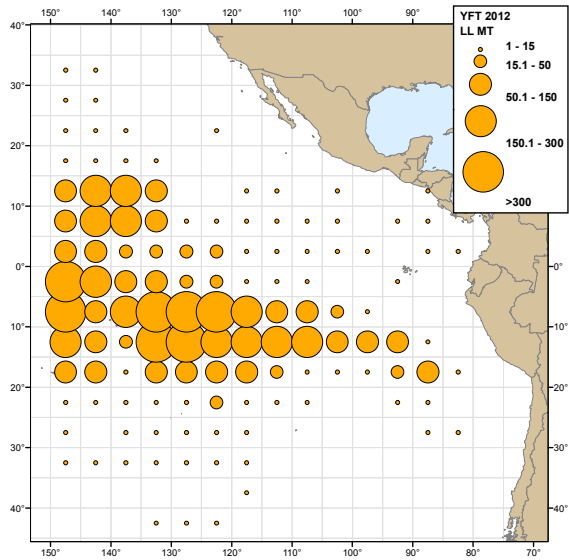
EPO Annual catches of bigeye tuna by longline vessels

	CHN	CRI	FRA (PYF)	JPN	KOR	MEX	PAN	TWN	USA	VUT	C + OTR ¹	Total LL	Total PS + LL	OTR ²
2005	2,104	23	398	19,113	11,580	-	30	6,441	536	318	151	40,694	108,589	25
2006	709	18	388	16,235	6,732	-	37	6,412	85	960	195	31,771	115,608	40
2007	2,324	15	361	13,977	5,611	-	-	6,057	417	1,013	101	29,876	93,326	44
2008	2,379	16	367	14,908	4,150	-	-	1,852	1,277	790	468	26,207	101,236	28
2009	2,481	13	484	15,490	6,758	-	-	3,396	730	1,032	1,038	31,422	108,221	15
2010	2,490	4	314	15,847	9,244	-	-	5,276	1,356	1,496	1,063	37,090	94,842	2
2011	5,450	-	445	13,399	6,617	-	-	3,957	1,050	694	706	32,318	88,829	-
2012	4,386	3	464	16,323	7,450	-	-	4,999	875	1,063	604	36,167	102,187	27
2013	5,199	-	527	14,258	8,822	-	-	4,162	2,054	604	577	36,203	85,691	99
2014	5,253	9	526	13,634	8,203	-	114	4,511	2,073	897	120	35,340	95,785	177
2015	8,401	8	692	13,097	8,635	*	364	5,181	3,050	1,888	328	41,644	104,557	21
2016	7,052	3	477	10,427	7,692	*	293	6,054	2,087	762	679	35,525	92,238	22
2017	7,076	*	*	9,617	7,407	*	*	6,281	*	757	*	31,138	97,330	*





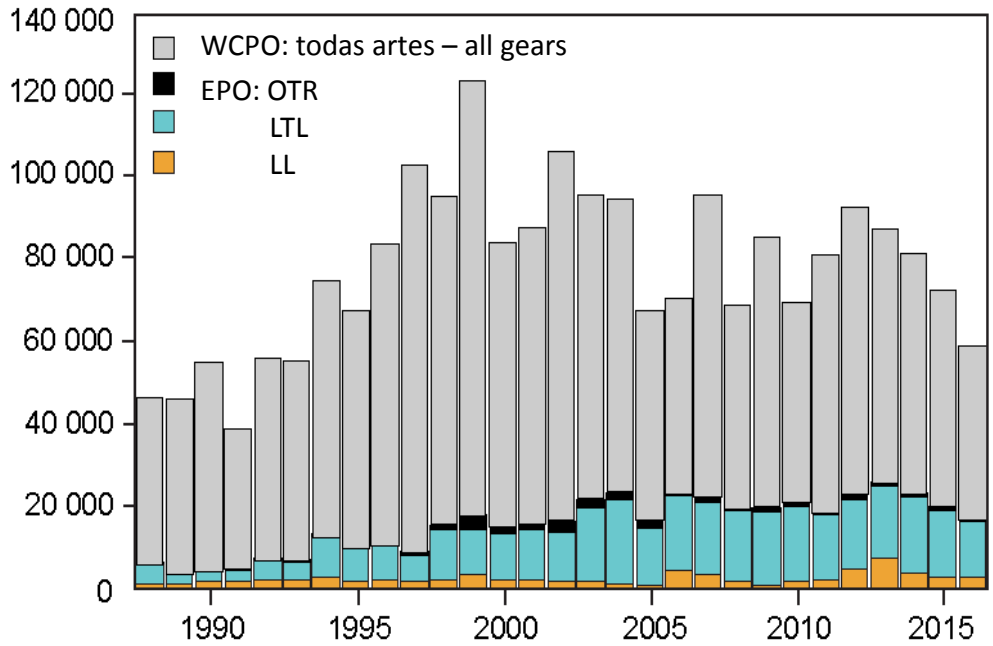




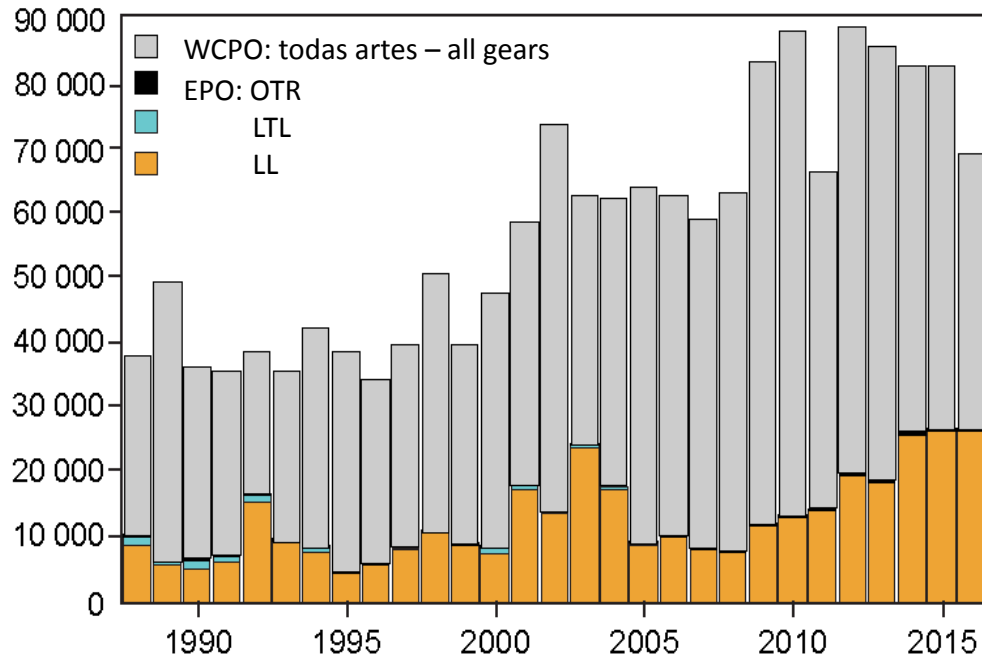


ALB: Capturas retenidas—Retained catches

Norte—North

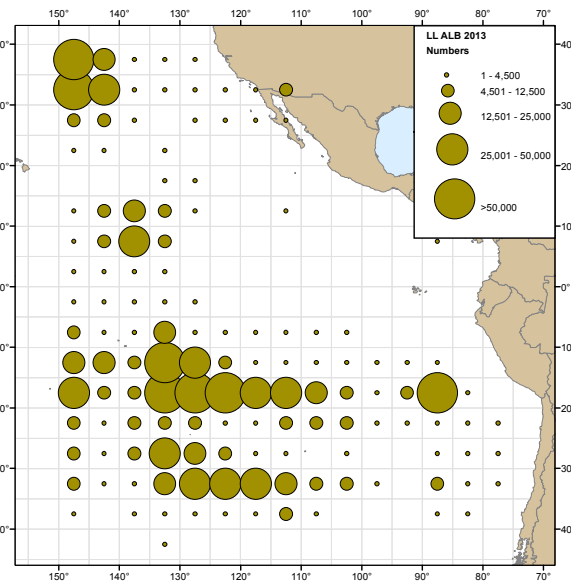
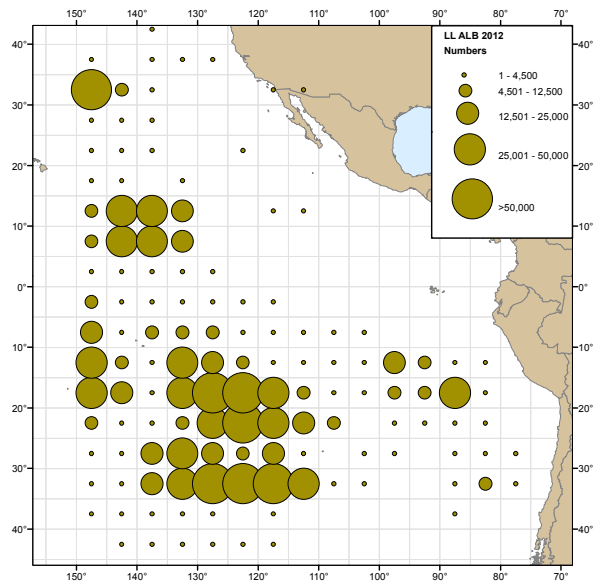
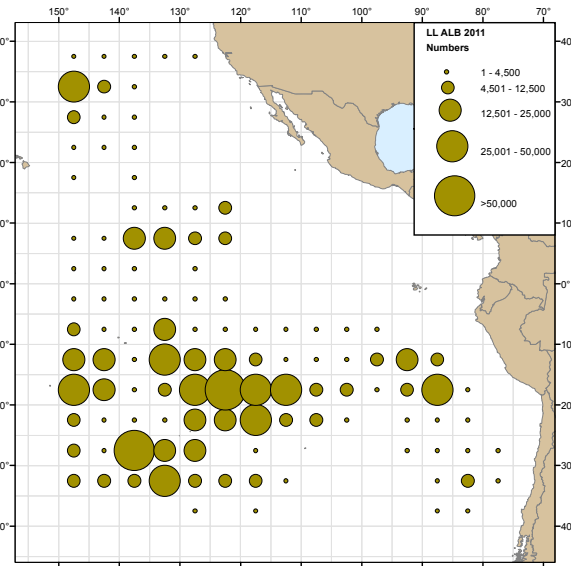
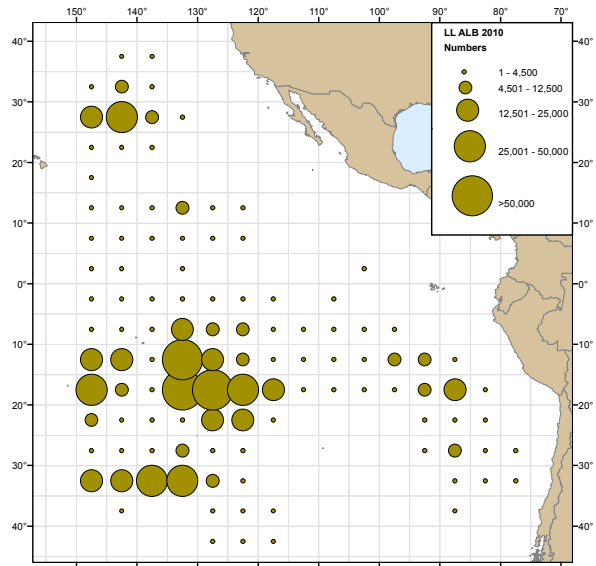


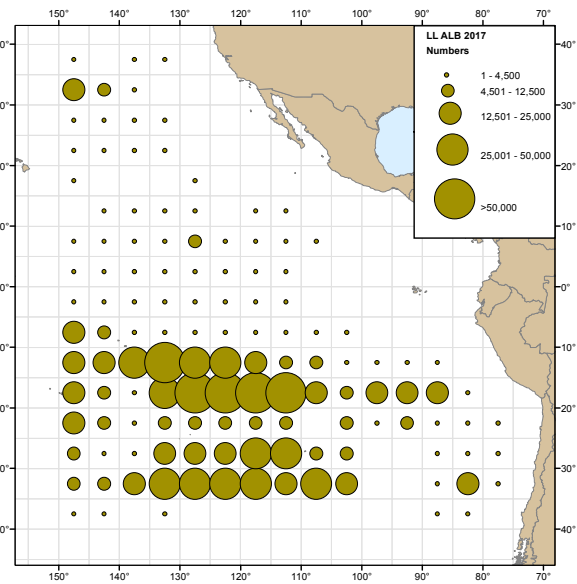
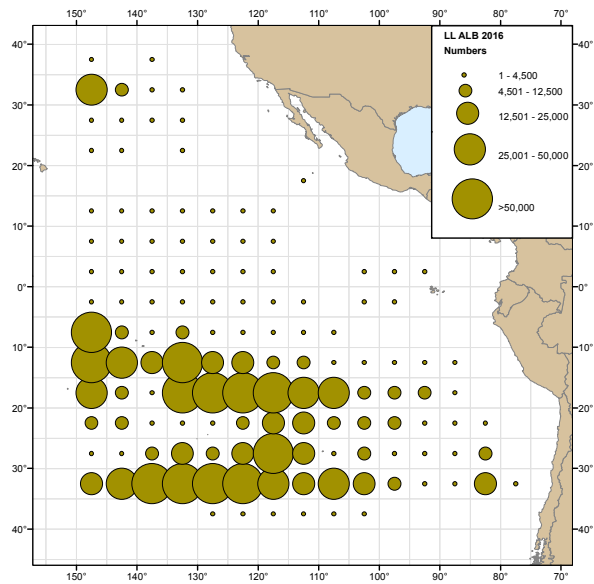
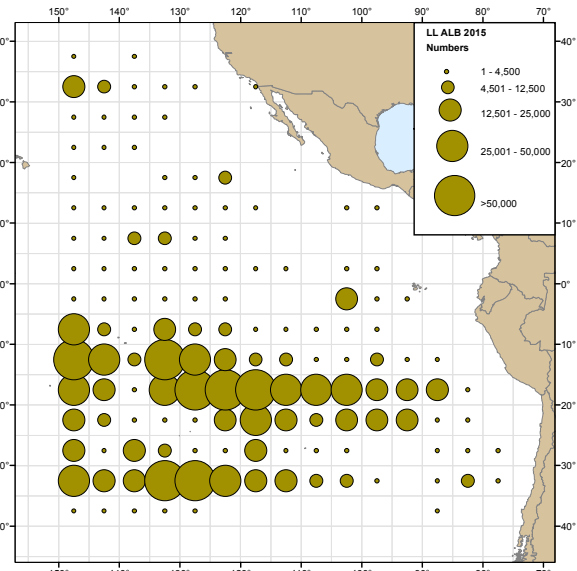
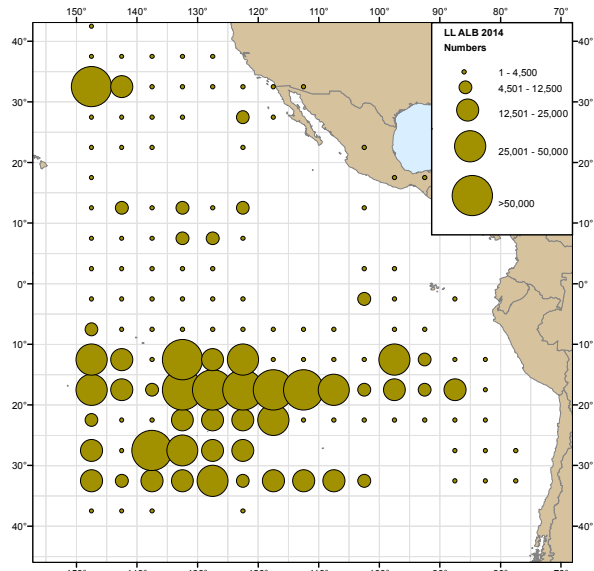
Sur—South



Artes de pesca—Fishing gears:
OTR: otras-others
LTL: curricán-troll
LL: palangre-longline







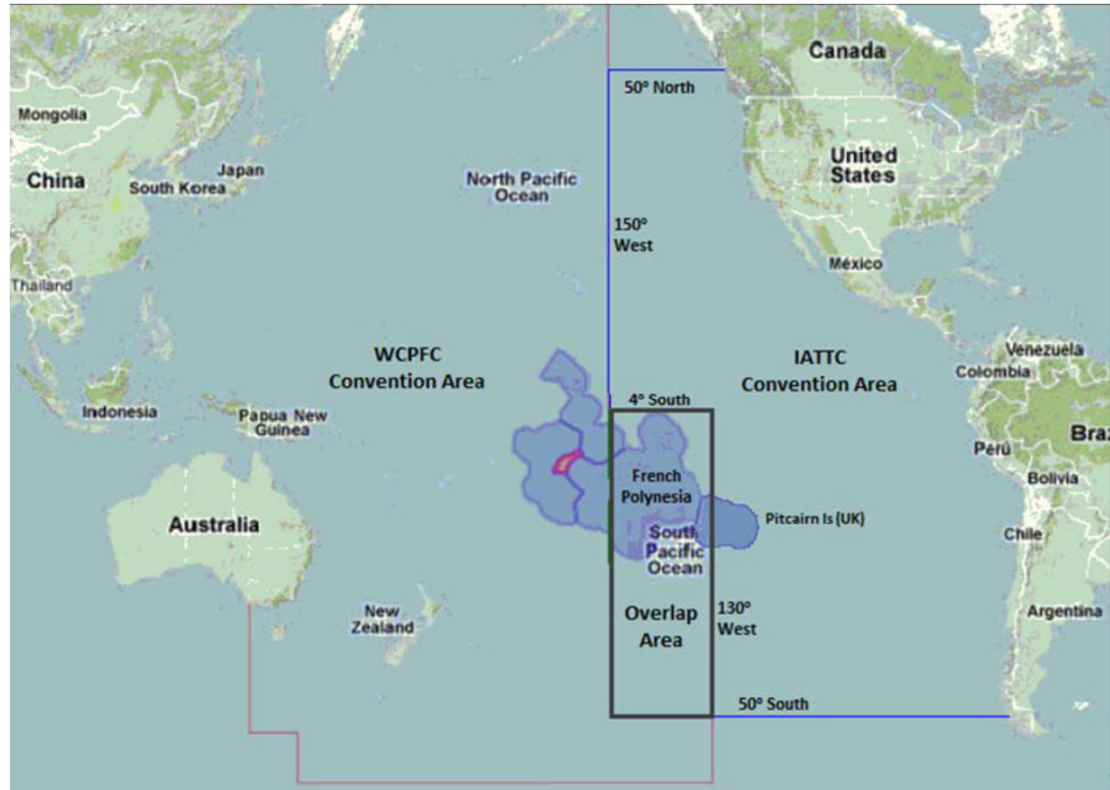
2018 BIGEYE TUNA LONGLINE CATCH LIMITS

	WCPFC	IATTC	Total
CHINA	8,224 (8,724)	2,507 (8,507)	10,731 (17,231)
JAPAN	18,265 (17,765)	32,372 (24,372)	50,637 (42,137)
KOREA	13,942	11,947 (13,947)	25,889 (27,889)
CHINESE TAIPEI	10,481	7,555	18,036
USA	3,554	750	4,304

In 2018 Japan transferred 500 t., to China from the WCPFC limit.

In 2018 Japan transferred 6,000 t to China and 2,000 t to Korea from the IATTC limit.

Overlap area between the WCPFC and IATTC Conventions



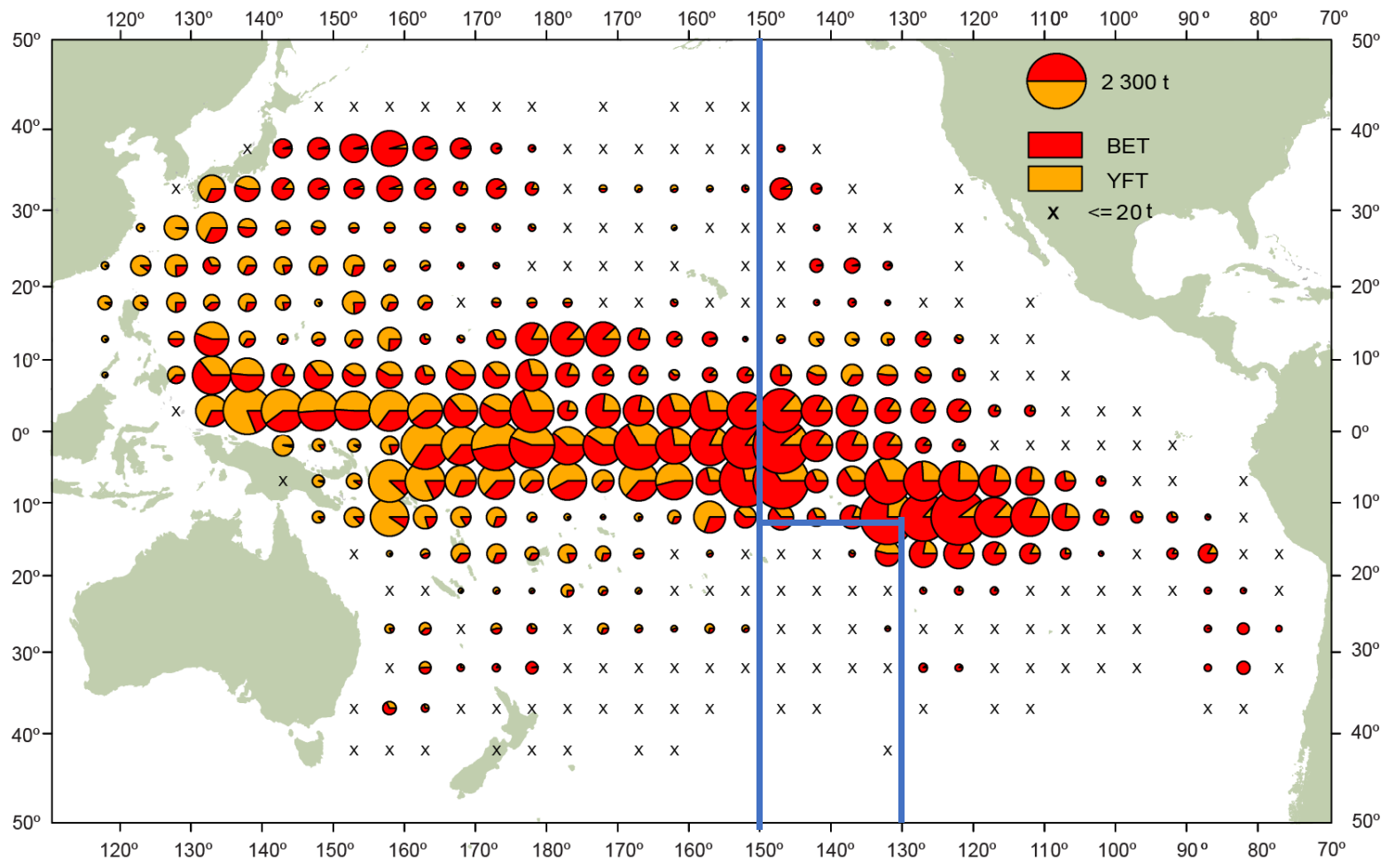
Annual longline catches in the WCPFC-IATTC overlap area (WCPFC data) **Target tuna catch (metric tons)**

	BEL	CHI	JPN	KOR	FYP	TWN	VAN	Total
1995	5,126	6,984	701	475				13,286
1996	4,103	7,129	1,289	1,223				13,744
1997	3,620	5,607	2,441	2,548				14,216
1998	18	8,516	8,667	3,324	3,030			23,555
1999	29	5,039	7,894	2,527	2,124			17,613
2000	82	4	7,847	9,340	4,932	2,631		24,837
2001	168	1	5,039	9,548	4,930	5,432	108	25,226
2002	692	194	4,185	5,158	4,373	235		14,837
2003	456	6,704	2,116	4,604	4,003	10,952	193	29,028
2004	163	3,316	4,169	3,154	7,423	1,469		19,694
2005	111	2,455	3,251	3,334	4,508	785		14,444
2006	2,867	1,732	3,274	3,237	1,522			12,632
2007	2,911	496	3,572	2,959	1,336			11,274
2008	1,661	1,410	3,072	1,471	1,068			8,682
2009	1,610	2,086	465	4,104	1,060	1,391		10,715
2010	29	1,870	1,732	1,785	3,207	2,513	1,783	12,919

IATTC-WCPFC arrangement applicable in the overlap area

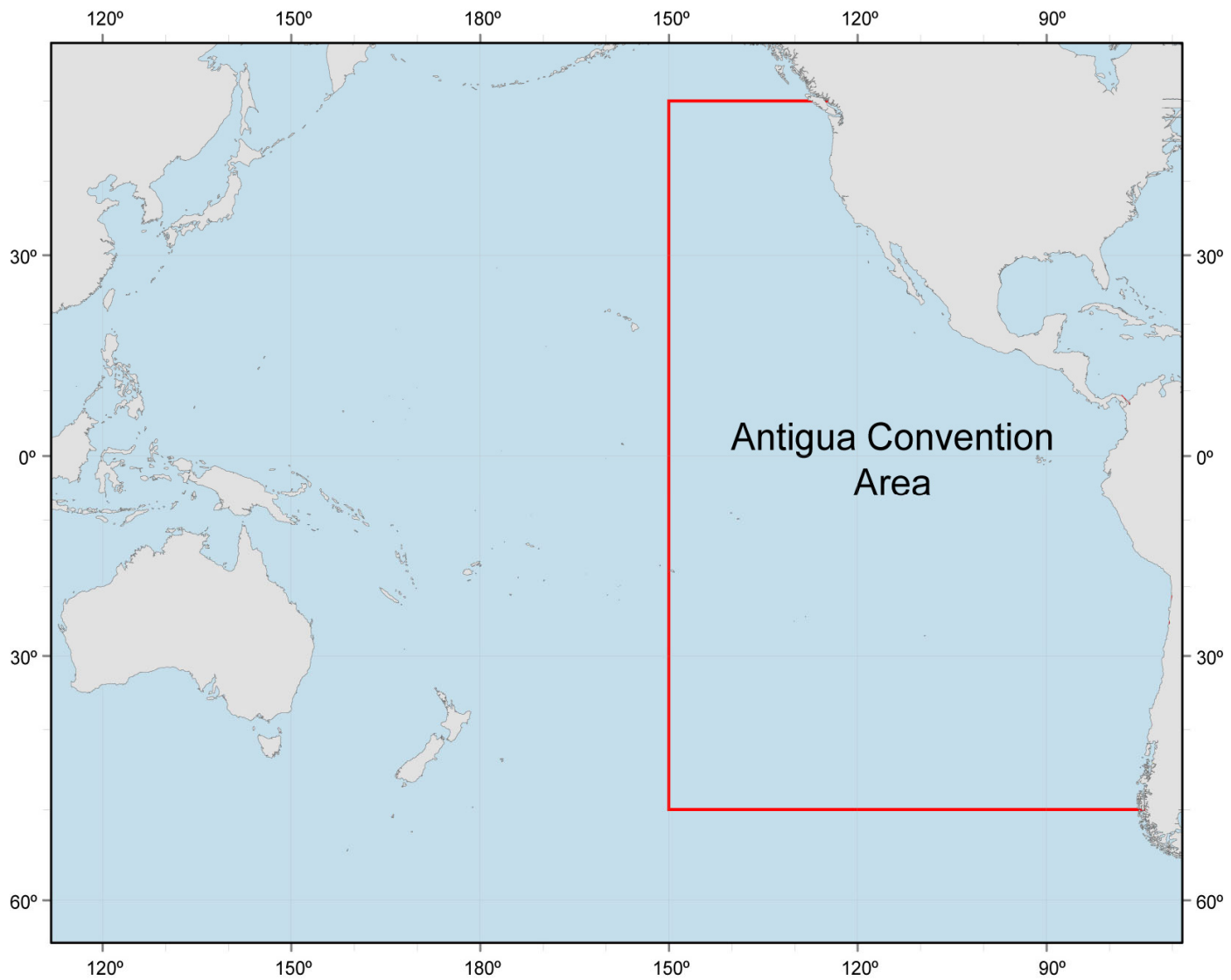
- Vessels listed exclusively in the WCPFC register shall apply the conservation and management measures of the WCPFC when fishing in the overlap area.
- Vessels listed exclusively in the IATTC register shall apply the conservation and management measures of the IATTC when fishing in the overlap area.
- In the case of vessels listed in the registers of both organizations, the corresponding flag Member shall decide and notify to both Commissions under which of the two commissions those vessels shall operate when fishing in the overlap area, as regards the application, for a period of not less than three years, of the conservation and management measures of that Commission.
- In the case of vessels listed in the registers of both organizations, the vessels of a Cooperating Non-Member shall apply the conservation and management measures of the Commission of which it is a member, when fishing in the overlap area

Distribución de LL 2012-2016—LL distribution 2012-2016



BET- Capture in overlap area, data from transshipment

	2013	2014	2015	2016	2017
China	394	909	4,103	2,351	1,779
Chinese Taipei	576	1,479	635	1,140	1,598
Japan	277	281	227	45	88
Korea	102	157	214	286	209
Vanuatu	0	0	289	368	349
Total:	1,349	2,819	4,896	4,190	4,023



Resolution C-18-06

CPCs shall notify the Director by 30 June each year of their vessels on the RVR that were actively fishing in the IATTC Convention Area for species covered by the Convention from 1 January to 31 December of the previous year