

**ISC/05/Plenary/7**

**Preliminary Research Concerning Biological Reference Points  
Associated With  
North Pacific Albacore Population Dynamics and Fisheries**

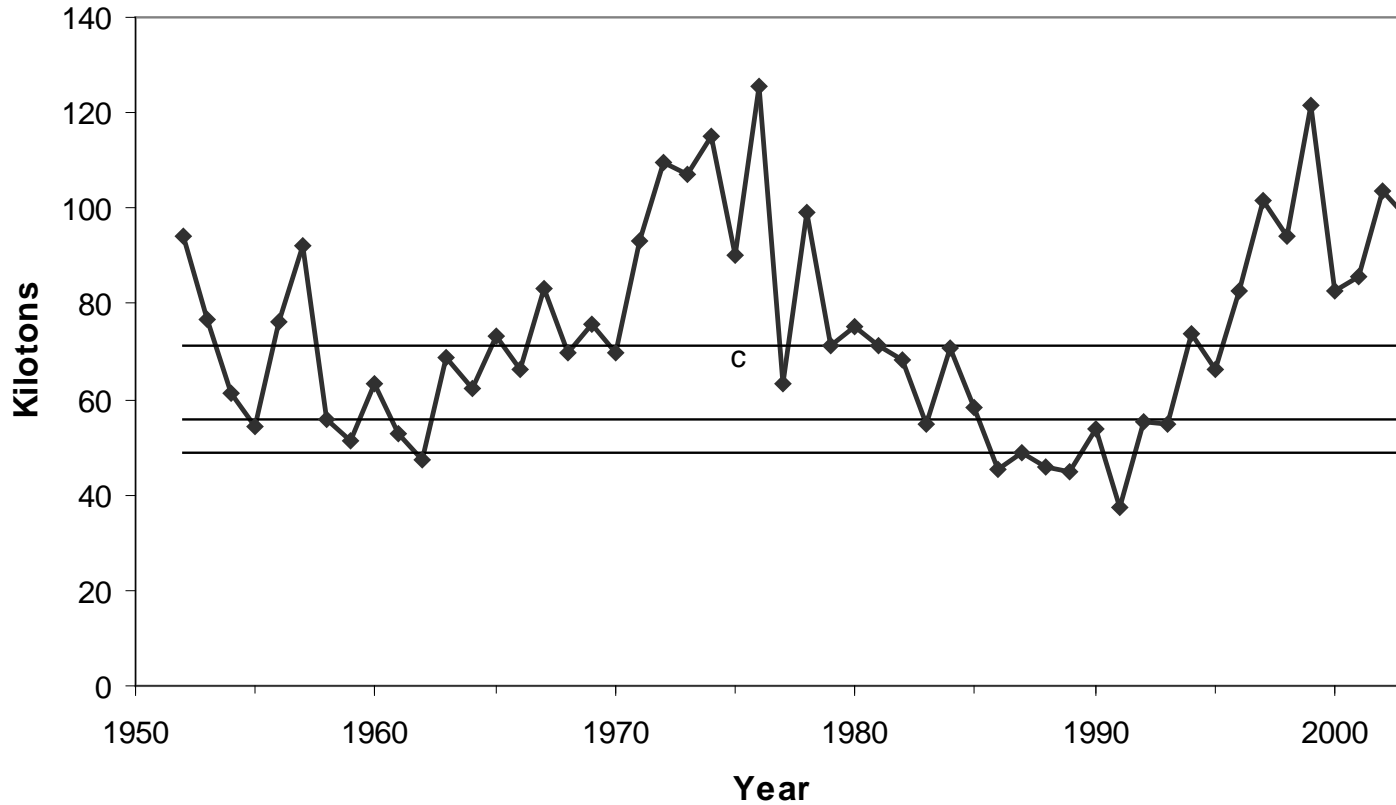
**R. Conser, P. Crone, and S. Kohin  
NOAA/NMFS/Southwest Fisheries Science Center  
La Jolla, CA USA**

**K. Uosaki, M. Ogura, and Y. Takeuchi  
National Research Institute of Far Seas Fisheries  
Shimizu, Japan**

## Question Posed to ISC5 by the Japan & USA Delegations

“What is the level (or dynamic range) of fishing mortality ( $F$ ) that will maintain the stock within the range of spawning stock biomass (SSB) that we have experienced over the assessment period (1975-2003)?”

**Historical Catch (1952-2003) of North Pacific Albacore with Median, Lower 25th Percentile, and Lower 10th Percentile**



# 19<sup>th</sup> North Pacific Albacore Workshop

Nanaimo, British Columbia, Canada  
November 2004

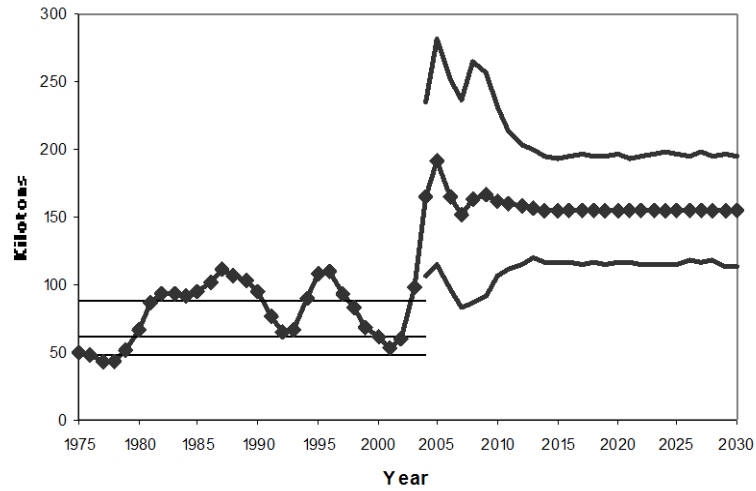
## Biological Parameters

## Stock Assessment Results

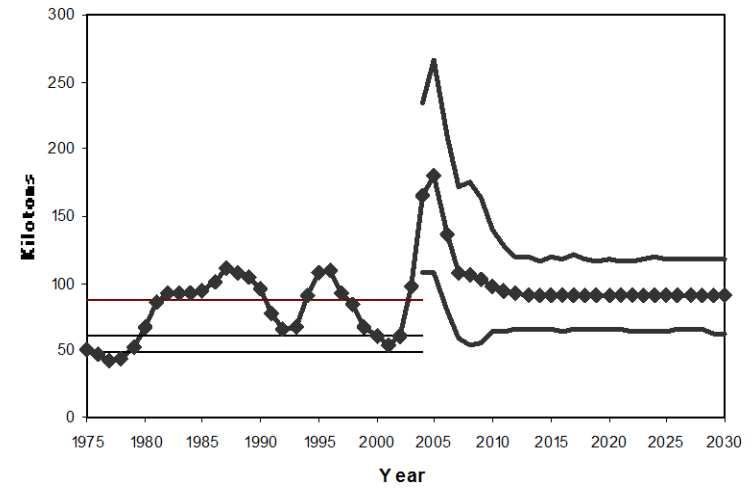
## Uncertainty Analysis Scenarios

- Low Productivity and Low Current F
- Low Productivity and High Current F
- High Productivity and Low Current F
- High Productivity and High Current F

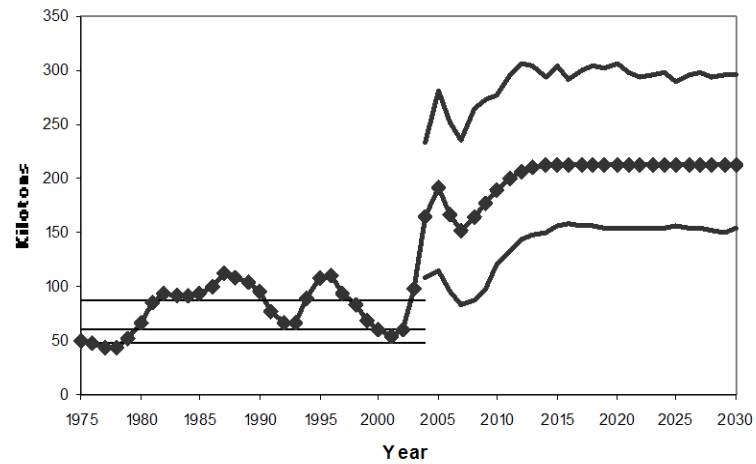
Spawning Stock Biomass with Low Productivity and  $F=0.43$  and 90% CI's for Projection Years



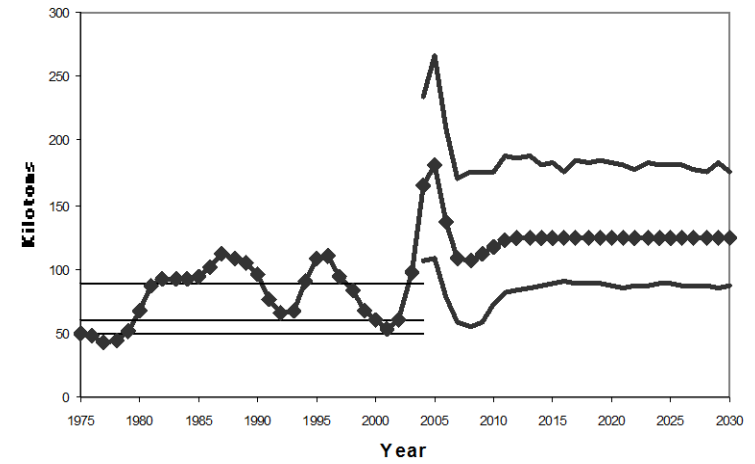
Spawning Stock Biomass with Low Productivity and  $F=0.68$  and 90% CI's for Projection Years



Spawning Stock Biomass with High Productivity and  $F=0.43$  and 90% CI's for Projection Years

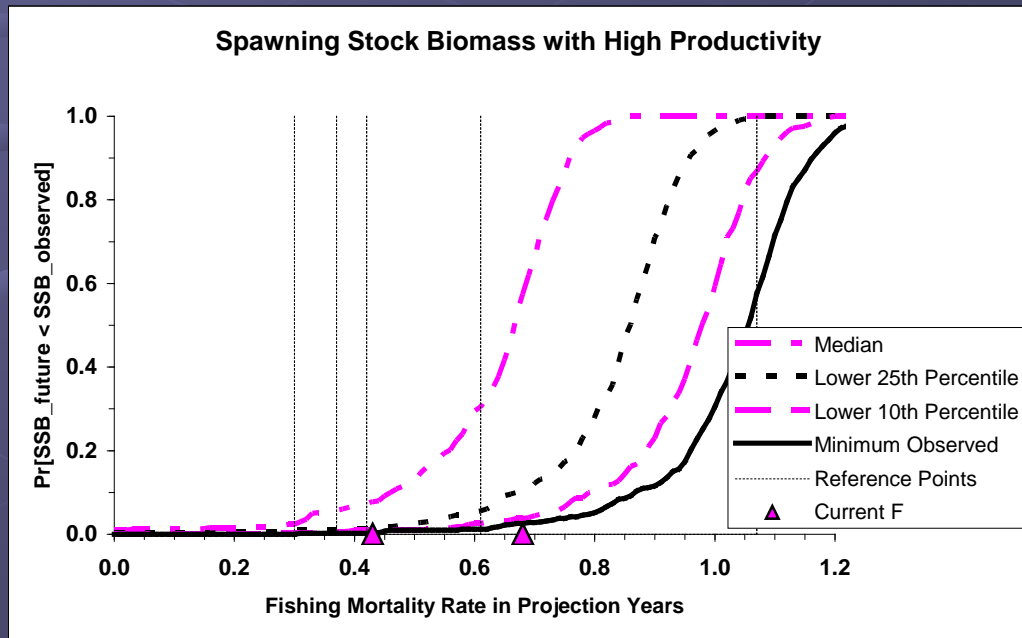
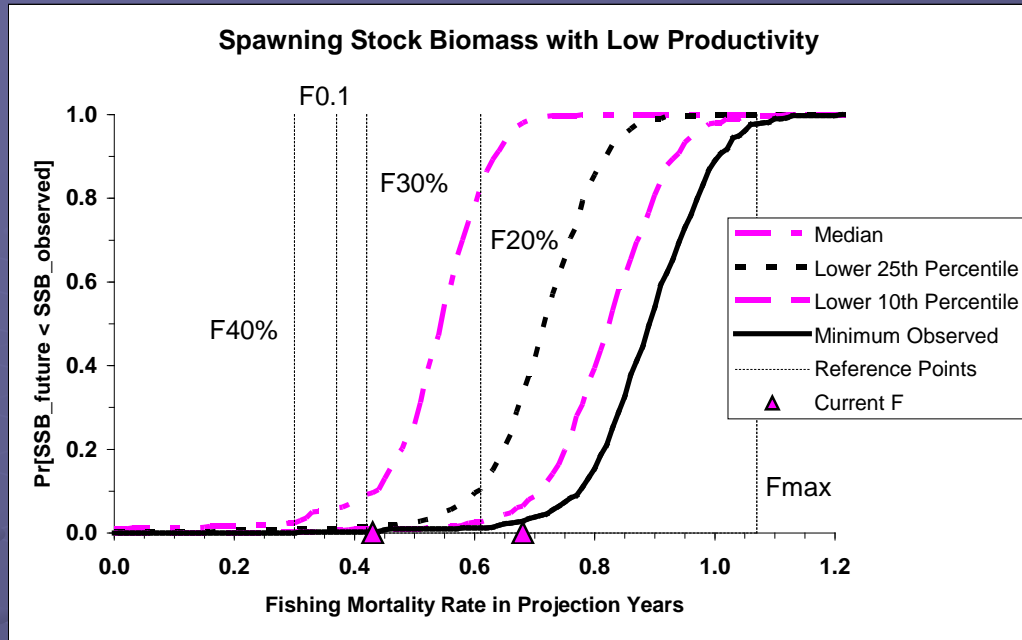


Spawning Stock Biomass with High Productivity and  $F=0.68$  and 90% CI's for Projection Years



**Recruitment Estimate (Age 1) for Assessment Period (1975-2004)**

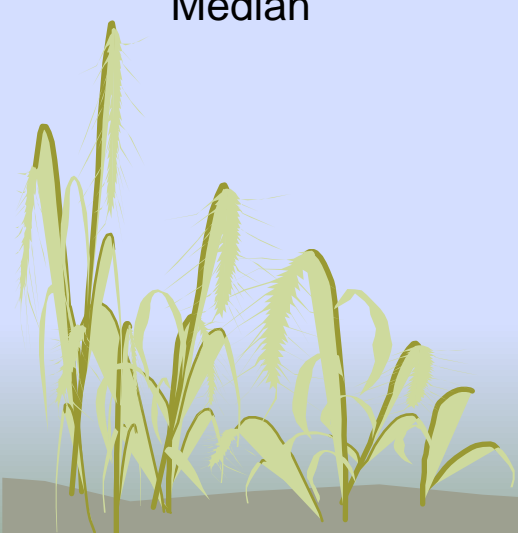




SSB Threshold Desired		Low Productivity		High Productivity	
		Probability Level Desired		Probability Level Desired	
		50%	95%	50%	95%
Minimum Observed SSB	$F_{SSB-Min}$	0.89	0.72	1.05	0.78
Lower 10th Percentile	$F_{SSB-10\%}$	0.82	0.66	0.98	0.71
Lower 25th Percentile	$F_{SSB-25\%}$	0.72	0.55	0.86	0.57
Median	$F_{SSB-50\%}$	0.54	0.33	0.67	0.33

High Current  $F = 0.68$

Low Current  $F = 0.43$





## Question Posed to ISC5 by the Japan & USA Delegations

“What is the level (or dynamic range) of fishing mortality ( $F$ ) that will maintain the stock within the range of spawning stock biomass (SSB) that we have experienced over the assessment period (1975-2003)?”

# Answer to Question Posed to ISC5 by the Japan & USA Delegations (Advice of the ISC)

1. Future SSB can be maintained at or above the minimum 'observed' SSB (43,000 t in 1977) with F's slightly higher than the current F range
2. However, the lowest 'observed' SSB estimates all occurred in late 1970's and may be the least reliable estimates of SSB
3. A more robust SSB threshold could be based on the lower 10<sup>th</sup> or 25<sup>th</sup> percentile of 'observed' SSB
4. If so done, current F should maintain SSB at or above the 10<sup>th</sup> percentile threshold
5. A modest reduction in current F may needed to maintain SSB at or above the 25<sup>th</sup> percentile threshold



The End

