

Comisión Interamericana del Atún Tropical
Inter-American Tropical Tuna Commission



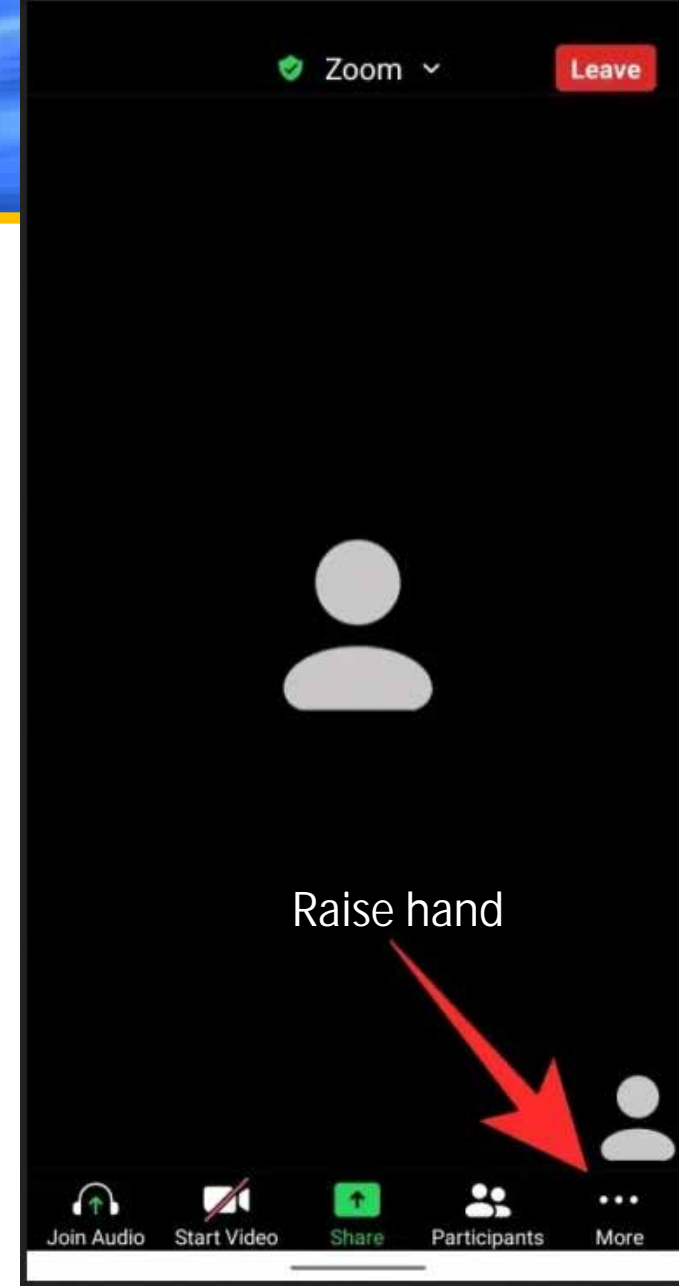
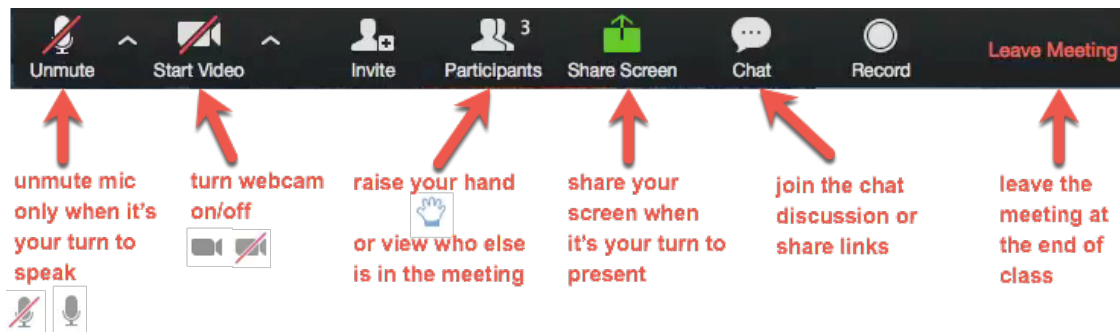
WSDAT-01: Workshop on Data Provision Improvement: Industrial Longline Fisheries in the Eastern Pacific Ocean

1st Workshop on improvements in data collection and provision: Industrial longline fishery
9-11 January 2023

Introduction to the meeting

The live meeting dynamics:

- 3-hour duration
- 10 min break
- Centered on the discussions
- Please use the **hand** button
- Discourage to use the chat



Participants

13 members and
cooperating non-members

BLZ
BOL
CHL
CHN
ECU
JPN
KOR
MEX
NIC
PAN
TWN
USA
VEN
NGO/Observers

The complete list of participants will be posted online
<https://www.iattc.org/en-US/Event/DetailMeeting/Meeting-WSDAT-01>

Goal of this 1st workshop focused on industrial LL

- Respond to recommendation by the SAC ([SAC-12-RPT](#)), to hold a series of workshops, by gear type, on data provision
 - § **S** the staff's previous and current collaborations with other RFMOs to share experiences in industrial longline data reporting and reporting requirements
 - § Where possible, to harmonize with FAO and other t-RFMOs data collection and reporting standards
 - § Provide case studies to illustrate the impact of data quality and potential benefits of improved data reporting (target species and bycatch)
 - § Discuss the staff's recommendations for updating C-03-05
 - § Discuss the staff's initial proposed template of data fields
 - § Provide the staff's recommendations on the data reporting process (both new and historical data)

Meeting Agenda

- Introduction to the meeting (this presentation)
- 1. Opening of the workshop (Alexandre Aires-da-Silva)
- 2. Background presentations
 - a. WSDAT-01-01:
 - i. Overview of data Provision Resolution ([C-03-05](#)) and rationale for updating it (Leanne Fuller)
 - ii. Rationale for revising C-03-05 for target species and benefits of improved large-scale longline data for IATTC stock assessments (Carolina Minte-Vera)
 - iii. Benefits of improved large-scale longline data for bycatch species (Shane Griffiths)
 - b. Experiences working with longline data: catch-effort and associated datasets (Simon Hoyle)
- 3. Discussions of recommendations for updating C-03-05 pertaining to large longline vessels
 - a. Task I (annual data)
 - i. Species tables
 - b. Task II (spatially-explicit data):
 - i. Catch and effort data: proposed data fields for submission
 - ii. Size composition data
 - c. Reporting mechanisms
- 4. Adjournment

