

INTER-AMERICAN TROPICAL TUNA COMMISSION

85th MEETING

Veracruz, Veracruz (Mexico)

10-14 June 2013

DOCUMENT IATTC-85-05

IMPLEMENTATION OF THE IATTC REGIONAL OBSERVER PROGRAM FOR TRANSHIPMENTS AT SEA

1. INTRODUCTION

The IATTC observer program to monitor transshipments at sea by carrier vessels in the eastern Pacific Ocean (EPO), established by Resolution [C-08-02](#), amended by Resolution C-11-09 and now regulated by Resolution [C-12-07](#), started in January 2009, and by June 2013 will have operated for four-and-a-half years.

The Secretariat intends to continue working with the *Marine Resources Assessment Group Ltd.* (MRAG) consortium for operating the observer program, and the contract with MRAG will be renewed for 2014.

The data for 2013 in this document are for the first quarter of the year only, *i.e.*, up to 31 March

2. IMPLEMENTATION AND OPERATION

The programme is operating without any major problems with regard to its implementation and management. Observers have not reported incidents related to the monitoring procedures, which to date have been fully implemented by vessel operators and captains.

However, observers have reported that, generally, there is an insufficient supply of drinking water aboard carrier vessels. In many instances observers had to drink water from the general tank which is usually not potable. This is not consistent with Resolution C-12-07, which states in its Annex 3, paragraph 9c) that “*Observers shall be provided accommodations, including lodging, food and adequate sanitary facilities, equal to those of officers*”. The attention of the Members participating in the program is therefore drawn to the need to remedy this situation.

The Secretariat maintains on the Commission website the [list of carrier vessels](#) authorised to receive transshipments at sea, which is updated constantly with information supplied by the participants about additions of carrier vessels and modifications of the data on such vessels. The current list includes 43 vessels (Table 2.1).

Resolution [C-12-07](#) specifies that longline fishing vessels that transship at sea must be on the [list of longline vessels](#) authorised to fish in the IATTC Convention Area. The vessels authorised to transship are longline vessels of the five Members that participate fully in the transshipment program, plus two other vessels, one from Belize and another from Peru, which transship only very infrequently.

Paragraph 19 of Resolution C-12-07 states that: “*Each CPC shall report annually before 15 September to the Director:*

	Vessels
China	2
Korea	3
Japan	2
Kiribati	3
Panama	7
Sierra Leone	1
Chinese Taipei	2
European Union (Spain)	1
Vanuatu	22
TOTAL	43

TABLE 2.1 Authorized carrier vessels, by flag

- a) *The quantities by species transshipped during the previous year.*
- b) *The names of its vessels on the IATTC ... List [of large-scale longline vessels] which have transshipped during the previous year; and*
- c) *A comprehensive report assessing the content and conclusions of the reports of the observers assigned to carrier vessels which have received transshipment from its [large-scale longline vessels].”*

On 18 March 2013, the Secretariat sent the observer reports for 2012 to each participating Member in the program, and it is expected that those Members will submit their reports for 2012 to the Secretariat by 15 September 2012. The Secretariat received reports for 2011 from China, Japan, Korea, Vanuatu, and Chinese Taipei.

MRAG was informed in September 2011 that, with the entry into force of Resolution C-11-10 in January 2012, transshipments of oceanic whitetip shark are banned, and observers are required to report any such cases. To date no transshipments of this species have been reported.

3. RESULTS TO DATE

Figure 3.1 shows the number of observers requested and the number of days spent at sea by observers during 2009-2013. In 2012, 26 requests for observers were received, and all were met except one, which was cancelled by the participant. The number of observer requests and days at sea were less in 2012 than in 2011, with reductions of 34% and 26%, respectively. In 2013, as of 31 March, the number of days at sea was 404; at that rate, the total at the end of the year should be similar to that of 2012.

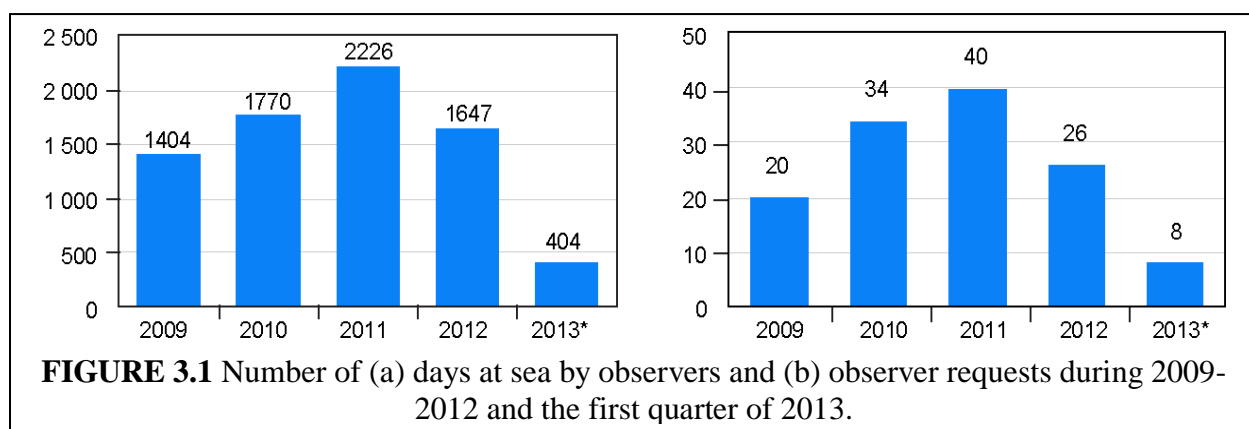


Figure 3.2 shows the transshipments at sea of tuna caught by longline vessels during 2009-2012 (broken down by species in Annex 1). Annex 2 shows the same data for the first three months of 2013, except that shark transshipments are shown separately, in accordance with Resolution C-12-07. Figure 3.3 shows the number of transshipments recorded during 2009-2013.

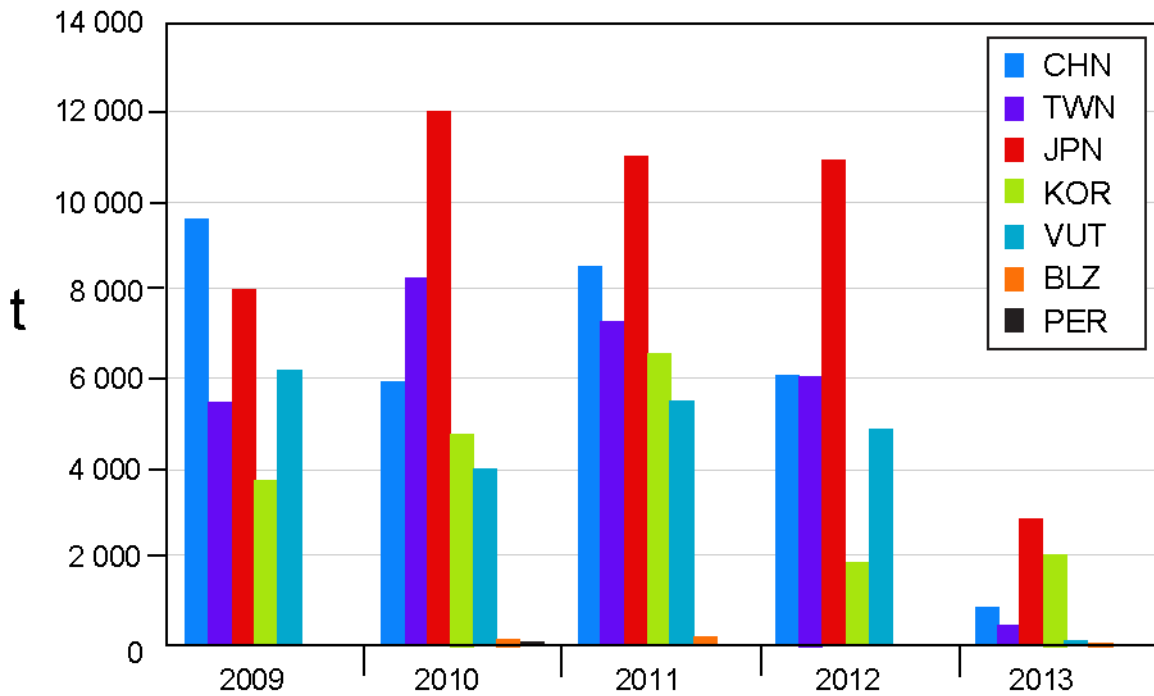


FIGURE 3.2 Catches by longline vessels transshipped in the EPO, 2009-2013, in metric tons.

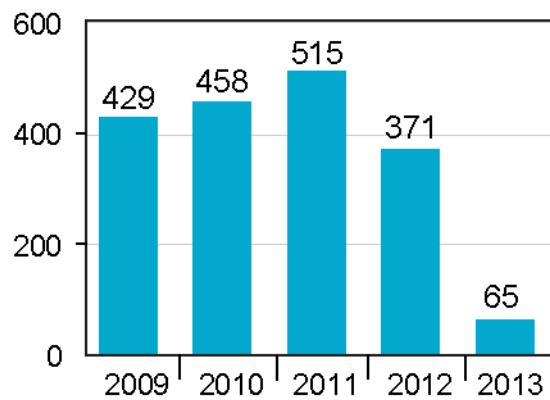


FIGURE 3.3. Number of transshipments in the EPO, 2009-2013.

Figure 3.4 illustrates the number of vessels used by each participant. Additionally, Peru and Belize have one vessel each, which in some years have also made transshipments within the program.

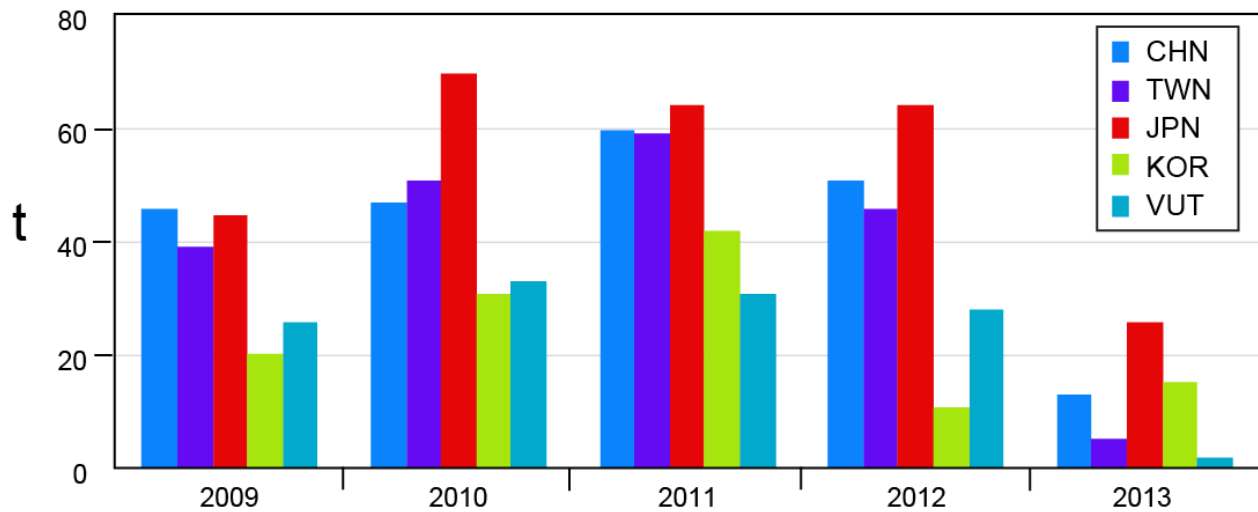


FIGURE 3.4. Number of longline vessels that transshipped in the EPO, 2009-2013

Figure 3.5 illustrates the total tonnage of fish transshipped under the program during 2009-2012. The downward trend observed since 2011 continues in 2013.

Figure 3.6 illustrates the species composition of transshipments in the EPO in the first quarter of 2013. The 110 tons of sharks transshipped represent 1.7% of the total. Sharks are treated separately, in accordance with Resolution C-12-07.

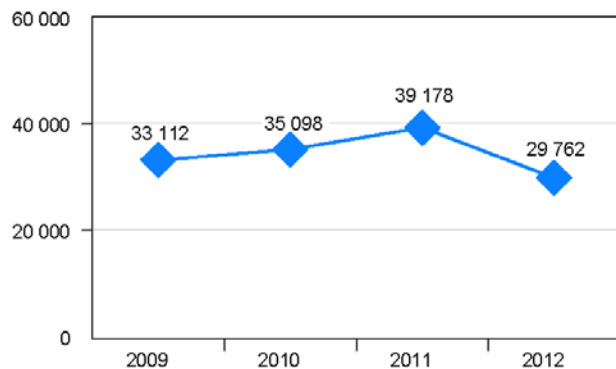


FIGURE 3.5. Total tonnage of fish transshipped under the program, 2009-2012

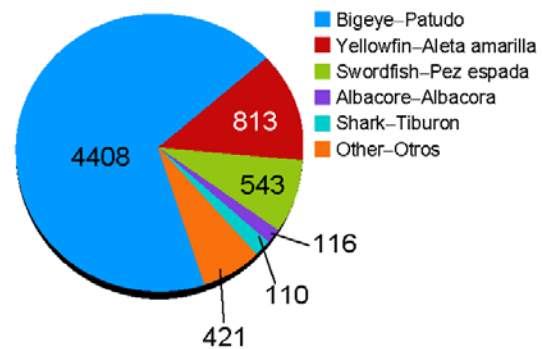


FIGURA 3.6. Species composition of transshipments, January-March 2013, in tons

Appendix 3 lists trips by carrier vessels in 2012 and 2013, together with the embarkation and debarkation ports of the program observers.

The positions of transshipments in the EPO during 2009-2013 are illustrated in Appendix 4a, and during 2012-2013 only in Appendix 4b.

Anexo-Appendix 1.

Pescado transbordado en el Océano Pacífico oriental, 2009-2012, en toneladas métricas
Fish transshipped in the eastern Pacific Ocean, 2009-2012, in metric tons

Participante	Patudo	Aleta amarilla	Pez espada	Albacora	Otros	Total OPO
Participant	Bigeye	Yellow-fin	Sword-fish	Albacore	Others	Total EPO
2009						
BLZ	-	-	-	-	-	
CHN	6,392	1,281	978	433	502	9,586
JPN	4,736	1,218	627	767	657	8,004
KOR	2,460	324	323	79	553	3,739
PHL	72	34	-	-	-	106
TWN	2,564	586	320	1,655	363	5,487
VUT	964	237	108	3,828	1,053	6,190
Total	17,186	3,679	2,356	6,762	3,128	33,112
2010						
BLZ	81	13	3	10	2	110
CHN	3,674	748	583	429	470	5,902
JPN	6,623	1,942	1,049	819	1,502	11,935
KOR	2,957	459	372	102	891	4,781
PER	80	15	7	3	3	108
PHL	-	-	-	-	-	-
TWN	4,561	992	541	1,434	730	8,258
VUT	1,321	259	131	1,963	330	4,005
Total	19,297	4,428	2,685	4,759	3,928	35,098
2011						
BLZ	90	9	19	76	17	212
CHN	5,363	1,157	815	436	755	8,526
JPN	5,198	1,111	1,247	1,819	1,622	10,997
KOR	4,263	574	486	253	1,015	6,591
PHL	-	-	-	-	-	-
TWN	2,246	413	271	3,269	1,123	7,323
VUT	1,160	228	166	3,609	366	5,529
Total	18,319	3,492	3,004	9,463	4,899	39,178
2012						
CHN	3,690	840	772	389	429	6,121
IDN	0	0	0	0	0	
JPN	5,894	1,359	1,185	1,340	1,162	10,938
KOR	1,257	130	166	55	257	1,866
PHL	0	0	0	0	0	0
TWN	2,476	395	398	2,015	664	5,949
VUT	1,226	160	157	2,996	348	4,888
Total	14,543	2,884	2,678	6,796	2,860	29,762

Anexo-Appendix 2.

Pescado transbordado en el Océano Pacífico oriental en 2013, al 31 de marzo, en toneladas métricas
Fish transshipped in the eastern Pacific Ocean in 2013, to 31 March, in metric tons

Participante	Patudo	Aleta amarilla	Pez espada	Albacora	Tiburones	Otros	Total OPO
Participant	Bigeye	Yellow-fin	Sword-fish	Albacore	Sharks	Others	Total EPO
BLZ	54	25	13	0	0	1	93
CHN	656	173	34	0	0	17	880
JPN	2,007	318	300	39	0	142	2,807
KOR	1,325	199	133	69	99	223	2,049
TWN	276	77	42	8	11	35	449
VUT	90	20	21	0	0	2	132
Total	4,408	813	543	116	110	421	6,411

Anexo-Appendix 3.

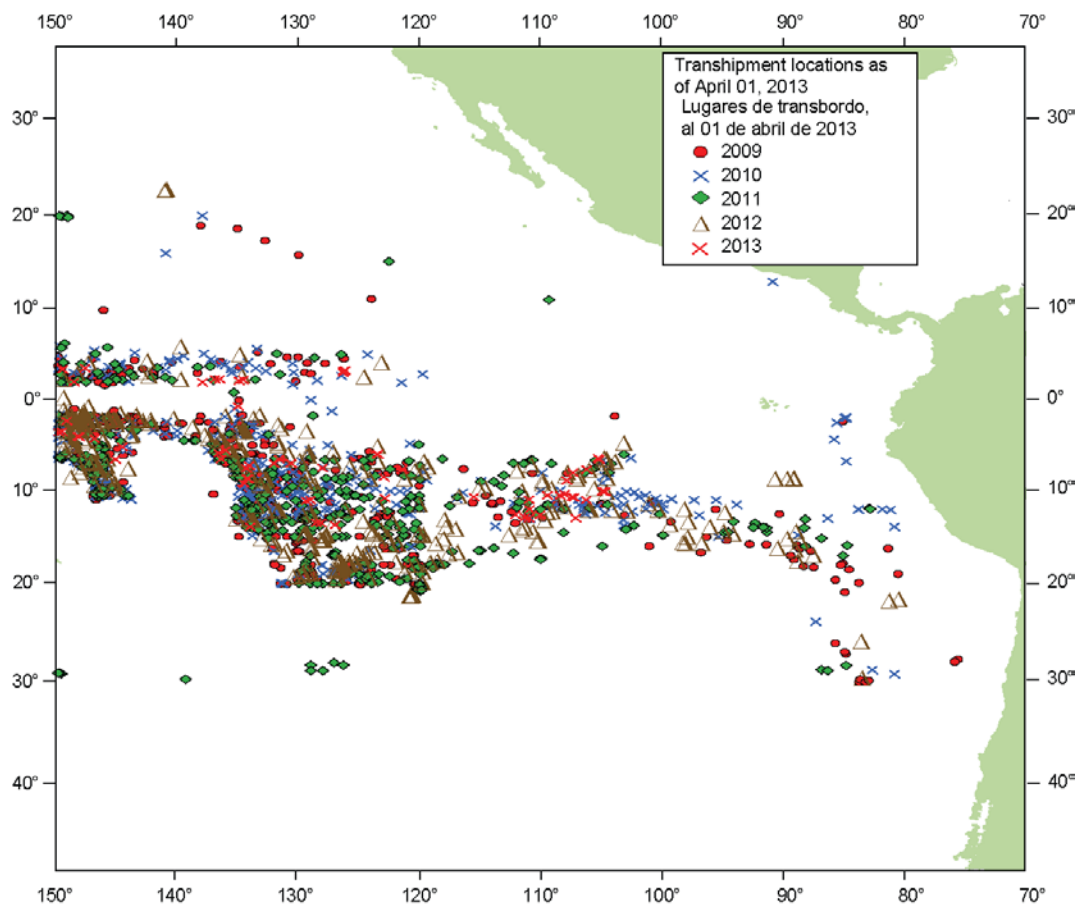
Viajes de buques cargueros, 2012, y 2013 al 31 de marzo
Trips by carrier vessels, 2012, and 2013 to 31 March

Viaje CIAT	Buque	Ban- dera	Zarpe		Arribo	
			Fecha	Puerto	Fecha	Puerto
IATTC trip	Vessel	Flag	Departure		Arrival	
			Date	Port	Date	Port
2012						
116	Tenho Maru	VUT	3-Jun-2012	Papeete, French Polynesia	14-Jul-2012	Papeete, French Pol- ynesia
117	Shin Izu	VUT	5-Jun-2012	Kaohsiung, Taiwan	5-Oct-2012	Kaohsiung, Taiwan
118	Taiho Maru	VUT	2-Jul-2012	Papeete, French Polynesia	25-Aug-2012	Papeete, French Pol- ynesia
119	SL Bogo	KOR	18-Jun-2012	Busan, Republic of Korea	22-Aug-2012	Busan, Republic of Korea
120	Shin Ho Chun 101	KIR	17-Jul-2012	Papeete, French Polynesia	20-Aug-2012	Papeete, French Pol- ynesia
121	Shin Fuji	PAN	23-Jul-2012	Kaohsiung, Taiwan	20-Sep-2012	Kaohsiung, Taiwan
122	Lung Yuin	VUT	4-Aug-2012	Suva, Fiji	17-Sep-2012	Suva, Fiji
123	Yu Hsiang Maru	VUT	6-Aug-2012	Papeete, French Polynesia	25-Sep-2012	Papeete, French Pol- ynesia
124	Shota Maru	VUT	7-Aug-2012	Kaohsiung, Taiwan	9-Nov-2012	Kaohsiung, Taiwan
125	Kaiho Maru	VUT	4-Sep-2012	Papeete, French Polynesia	22-Oct-2012	Papeete, French Pol- ynesia
126	Haru	PAN	8-Sep-2012	Kaohsiung, Taiwan	29-Nov-2012	Kaohsiung, Taiwan
127	SL Bogo	KOR	27-Sep-2012	Busan, Republic of Korea	29-Nov-2012	Busan, Republic of Korea
128	Meita Maru	VUTu	20-Sep-2012	Busan, Republic of Korea	24-Oct-2012	Busan, Republic of Korea
129	Tenho Maru	VUT	29-Oct-2012	Papeete, French Polynesia	29-Nov-2012	Papeete, French Pol- ynesia
130	Shin Ho Chun 101	KIR	25-Nov-2012	Papeete, French Polynesia	24-Dec-2012	Papeete, French Pol- ynesia
131	Lung Yuin	VUT	13-Dec-2012	Papeete, French	31-Jan-2013	Papeete, French Pol-

Viaje CIAT	Buque	Ban- dera	Zarpe		Arribo	
			Fecha	Puerto	Fecha	Puerto
IATTC trip	Vessel	Flag	Departure		Arrival	
			Date	Port	Date	Port
				Polynesia		ynesia
132	<i>Seiwa</i>	KIR	20-Nov-2012	Kiritimati, Kiribati	23-Nov-2012	Kiritimati, Kiribati
2013						
133	<i>Shota Maru</i>	VUT	14-Jan-2013	Suva, Fiji	11-Mar-2013	Suva, Fiji
134	<i>Yu Hsiang Maru</i>	VUT	5-Jan-2013	Papeete, French Polynesia	14-Feb-2013	Papeete, French Polynesia
135	<i>Meita Maru</i>	VUT	7-Jan-2013	Busan, Republic of Korea	3-Mar-2013	Busan, Republic of Korea
136	<i>SL Bogo</i>	KOR	9-Jan-2013	Busan, Republic of Korea	15-Mar-2013	Busan, Republic of Korea
137	<i>Haru</i>	VUT	1-Feb-2013	Kaohsiung, Taiwan	-	Kaohsiung, Taiwan
138	<i>Seiwa</i>	KIR	5-Feb-2013	Busan, Republic of Korea	-	Busan, Republic of Korea
139	<i>Tenho Maru</i>	VUT	5-Mar-2013	Papeete, French Polynesia	-	Papeete, French Polynesia
140	<i>Harima 2</i>	PAN	15-Mar-2013	Kaohsiung, Taiwan	-	Kaohsiung, Taiwan

Anexo-Appendix 4a.

Transbordos en el Océano Pacífico Oriental, 2009-2012, y 2013 al 1 de abril
Transshipments in the eastern Pacific Ocean, 2009-2012, and 2013 to 1 April



Anexo-Appendix 4b.

Transbordos en el Océano Pacífico Oriental, 2012-2013 (al 1 de abril)

Transshipments in the eastern Pacific Ocean, 2012-2013 (to 1 April)

