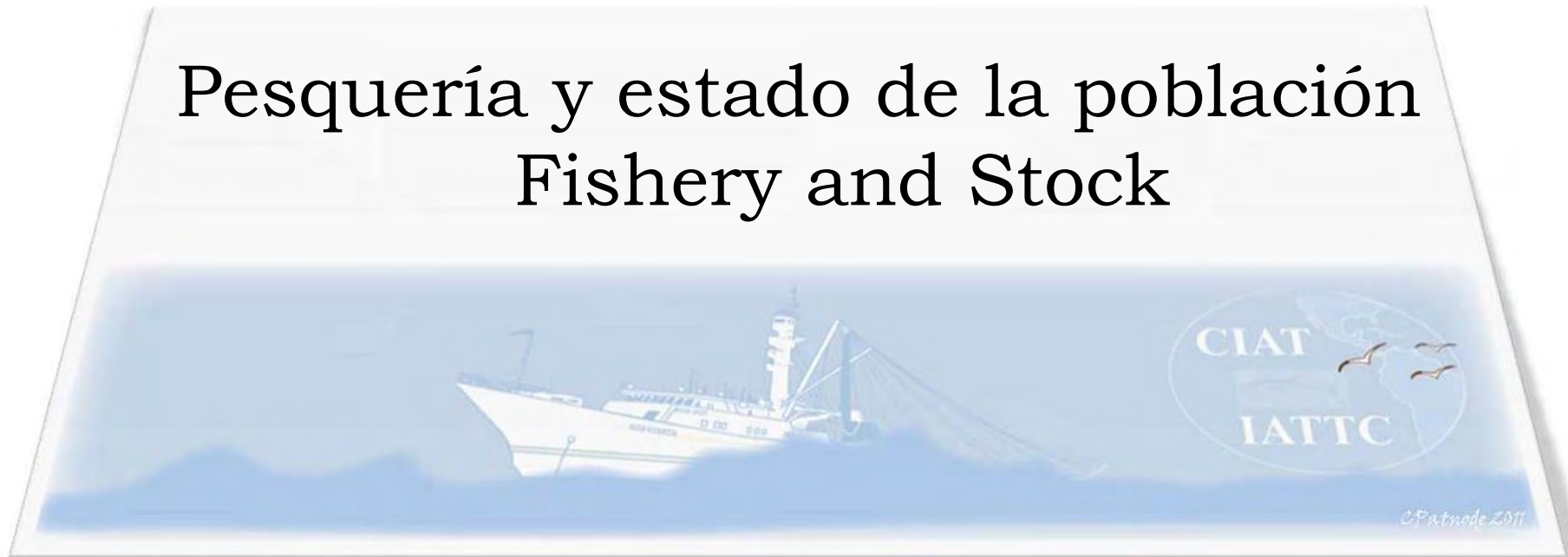

Comisión Interamericana del Atún Tropical
Inter-American Tropical Tuna Commission

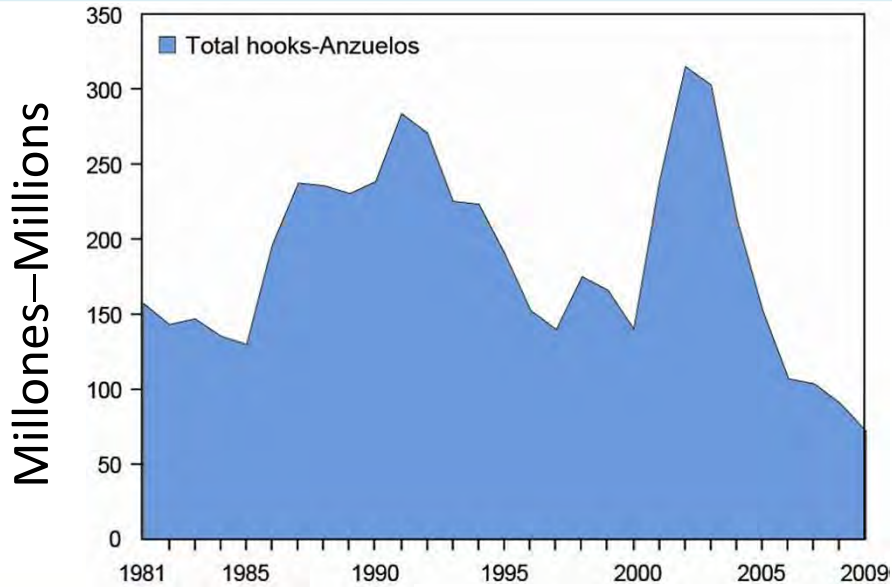


Pesquería y estado de la población Fishery and Stock

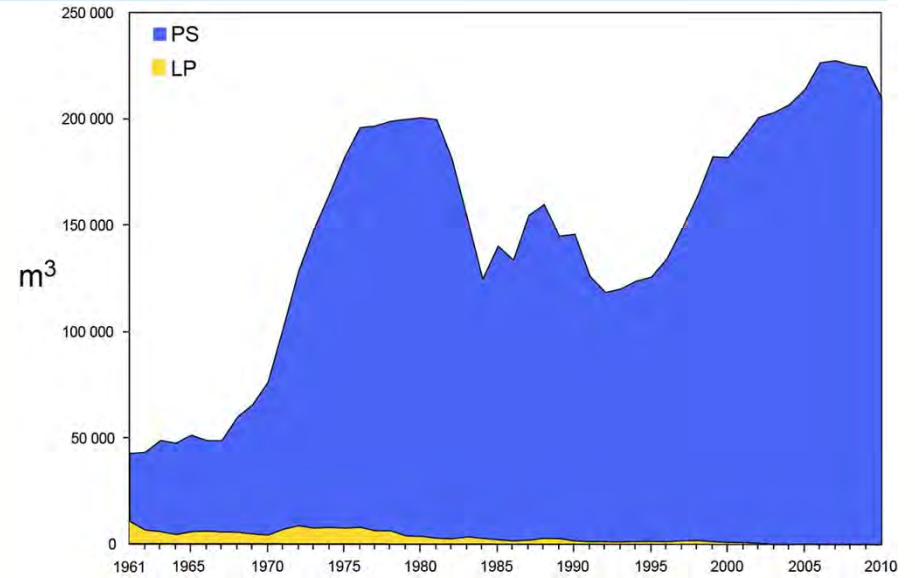


82ª Reunión de la CIAT
82nd Meeting of the IATTC

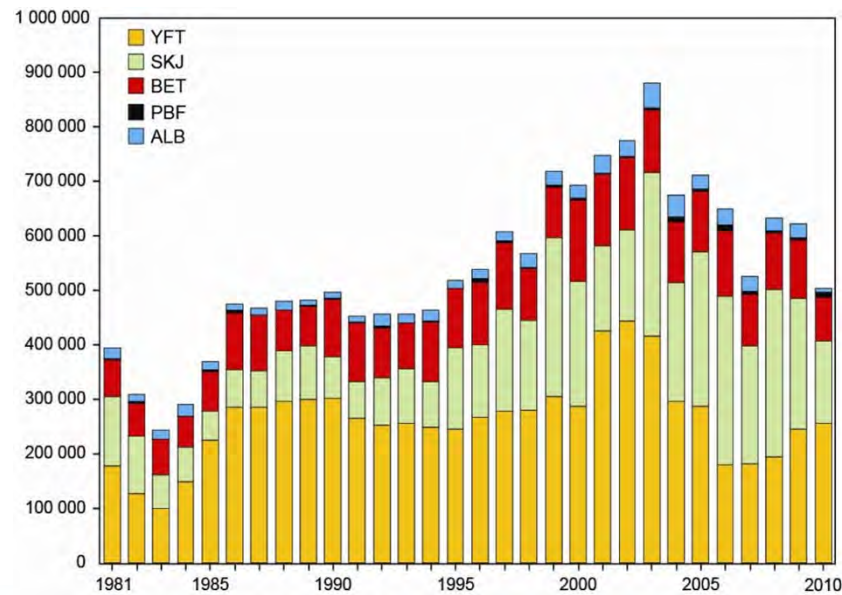
LL Anzuelos—Hooks



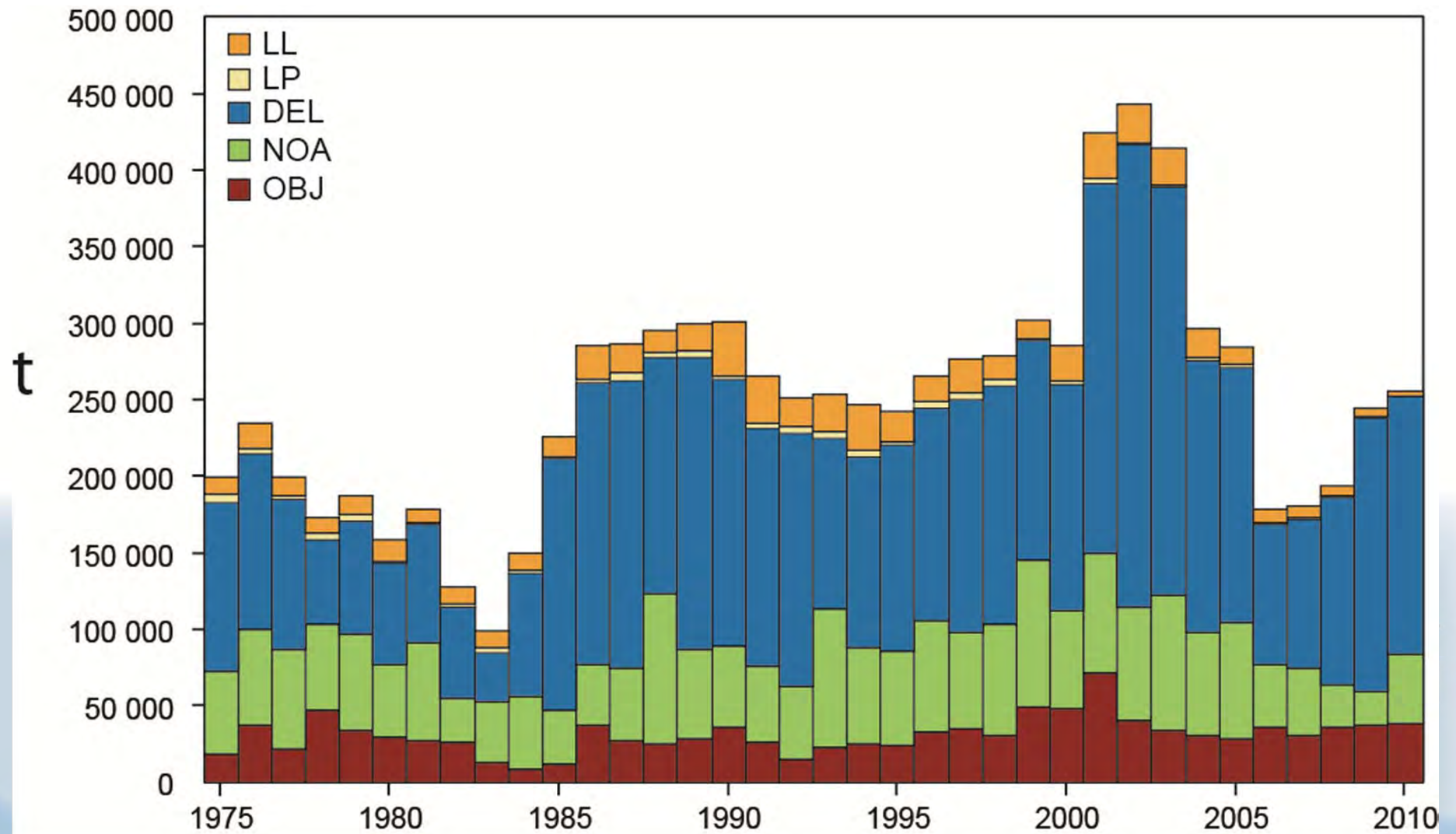
Capacidad de flota—Fleet capacity



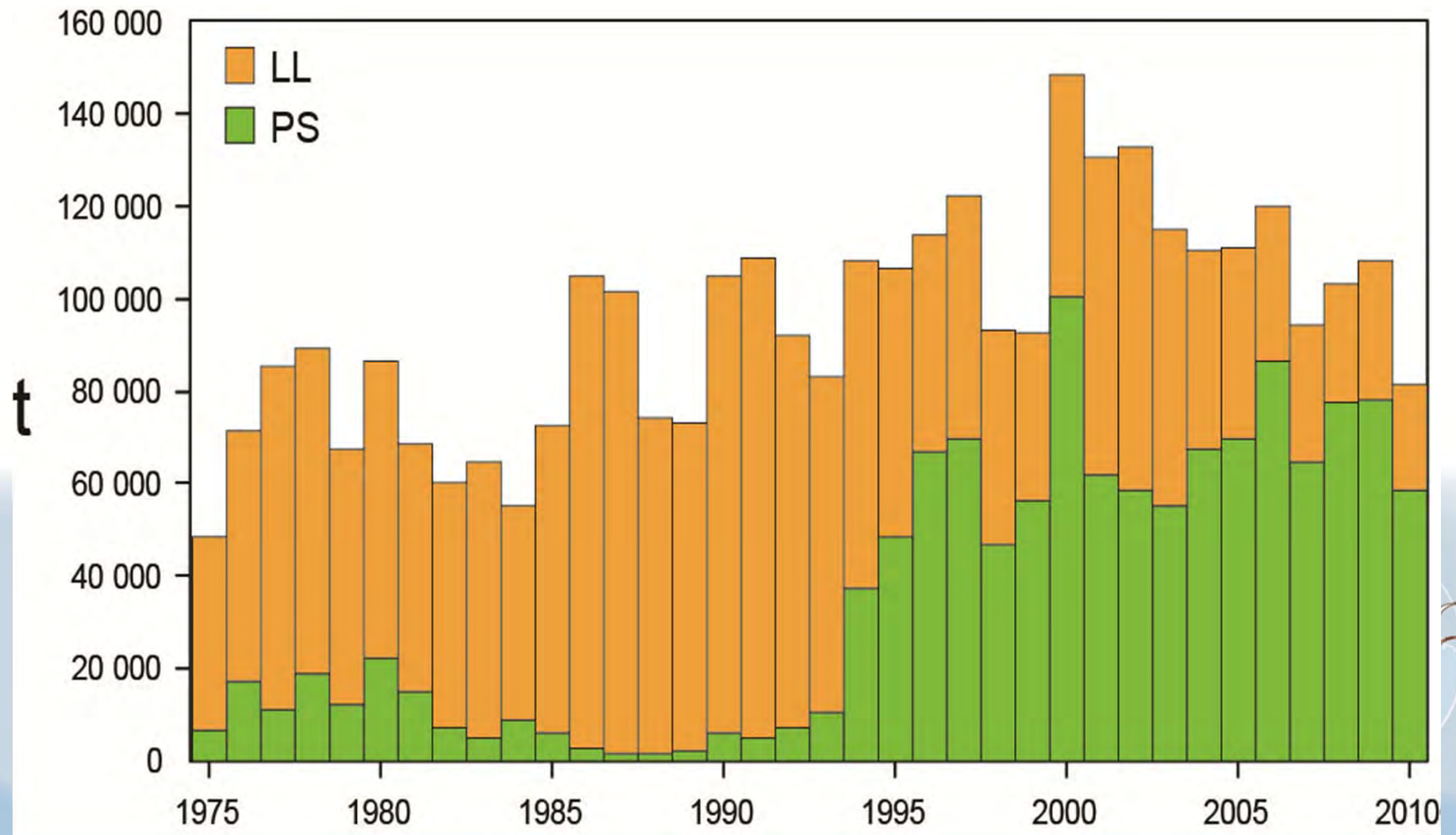
Captura por especies—Catches by species



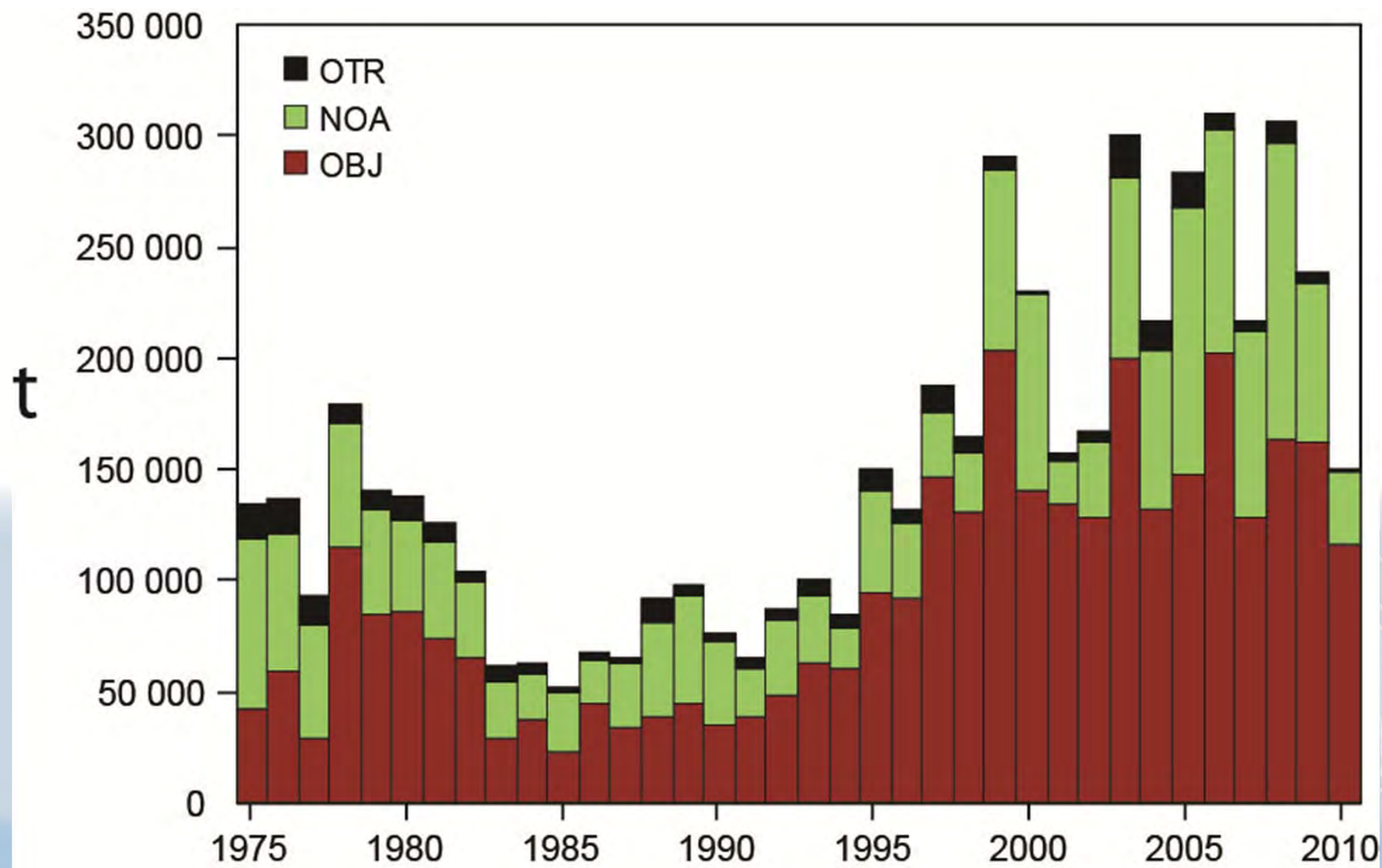
YFT - Captura por arte – YFT - Catch by gear type



BET - Captura por arte – BET - Catch by gear type



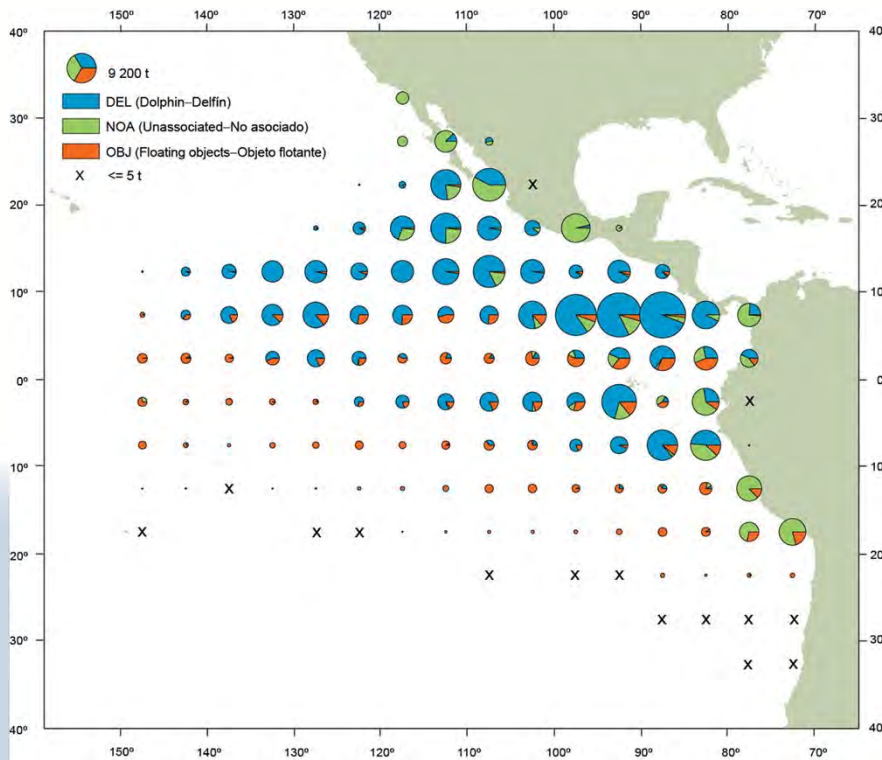
SKJ - Captura por arte – SKJ - Catch by gear type



YFT - Distribución de las capturas de cerqueros

YFT - Distribution of purse-seine catches

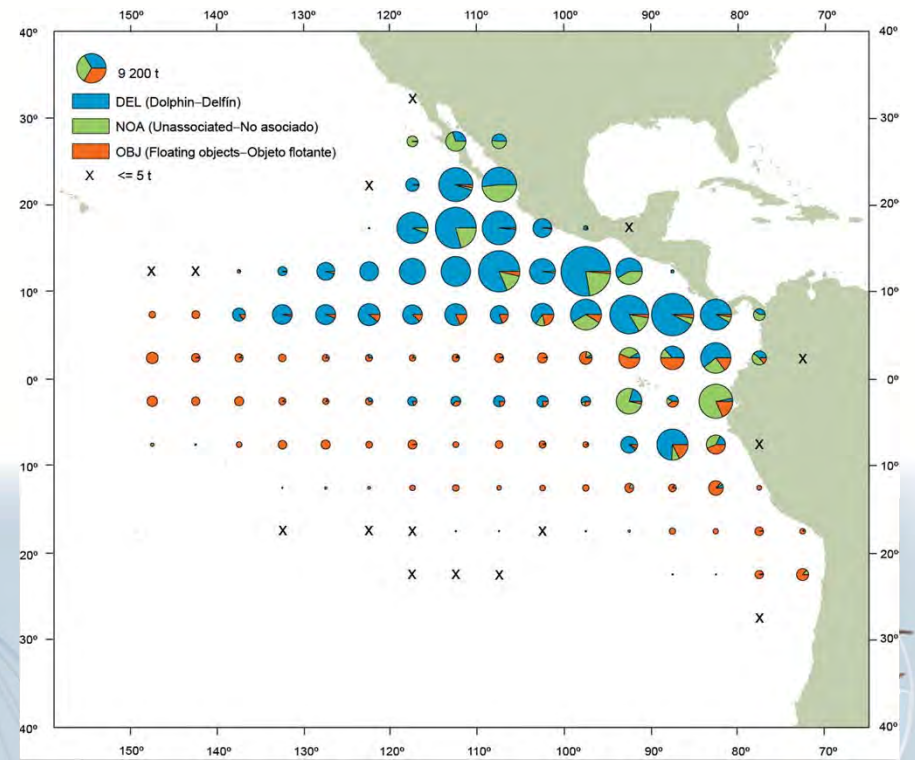
Promedio–Average 2005-2009



205 000 mt

(166 000 to 268 000)

2010



251 000 mt

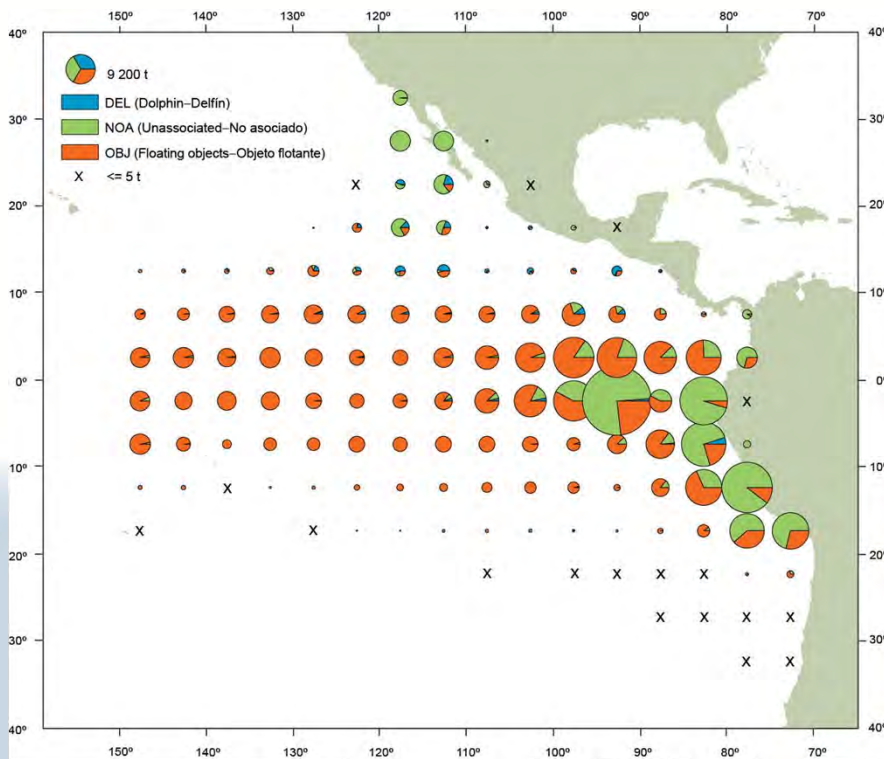
22% Higher–Mayor

IATTC

SKJ - Distribución de las capturas de cerqueros

SKJ - Distribution of purse-seine catches

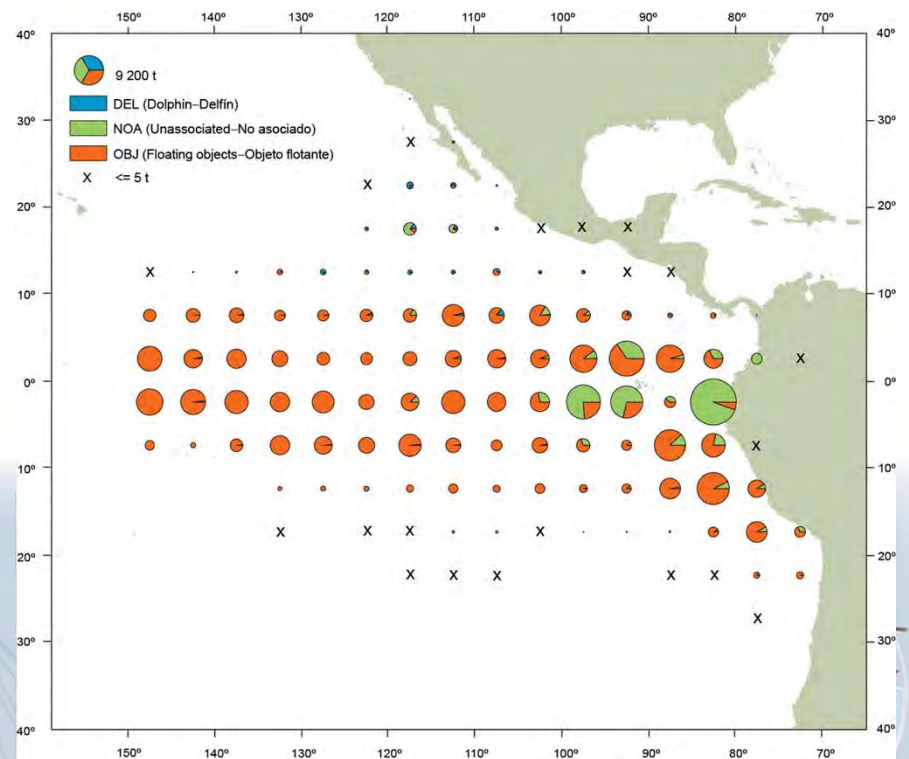
Promedio—Average 2005-2009



259 000 mt

(208 000 to 297 000)

2010



147 000 mt

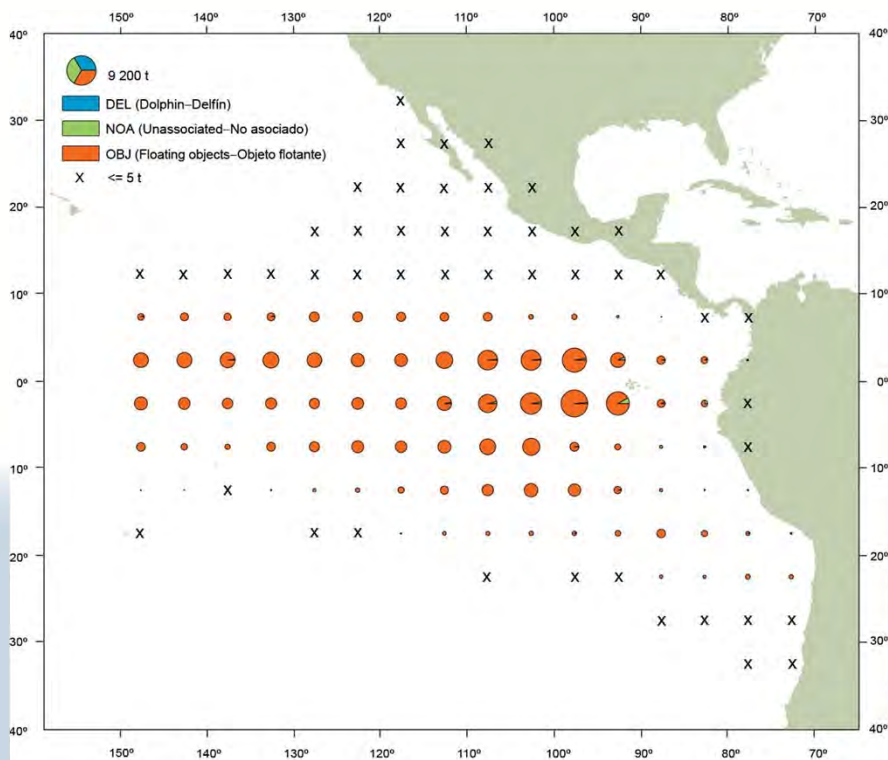
43% Lower—Menor

IATTC

BET - Distribución de las capturas de cerqueros

BET - Distribution of purse-seine catches

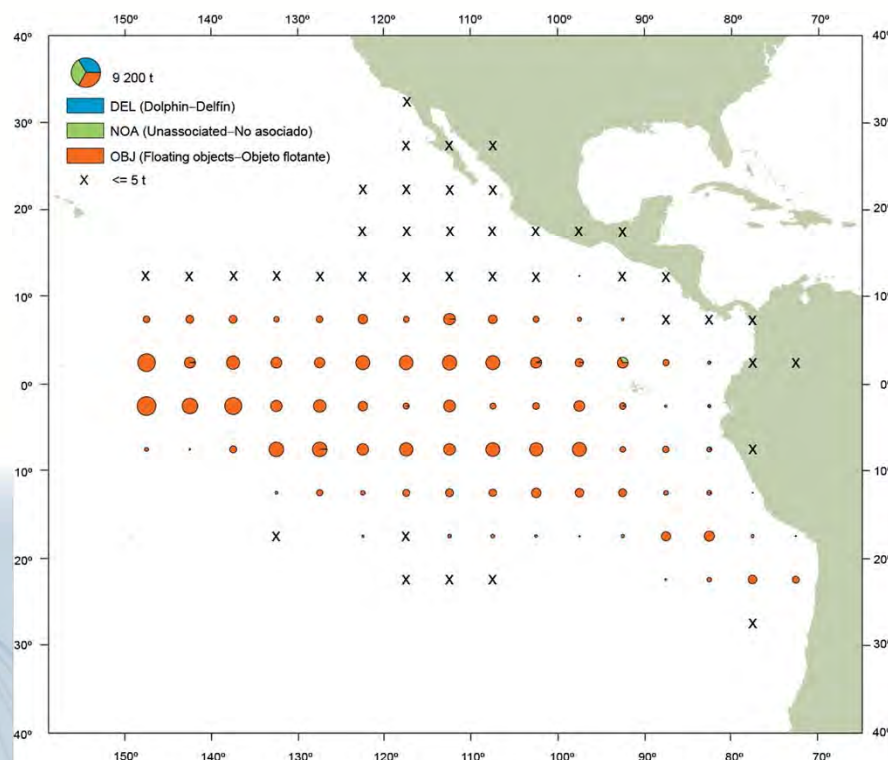
Promedio—Average 2005-2009



73 000 mt

(63 000 to 84 000)

2010

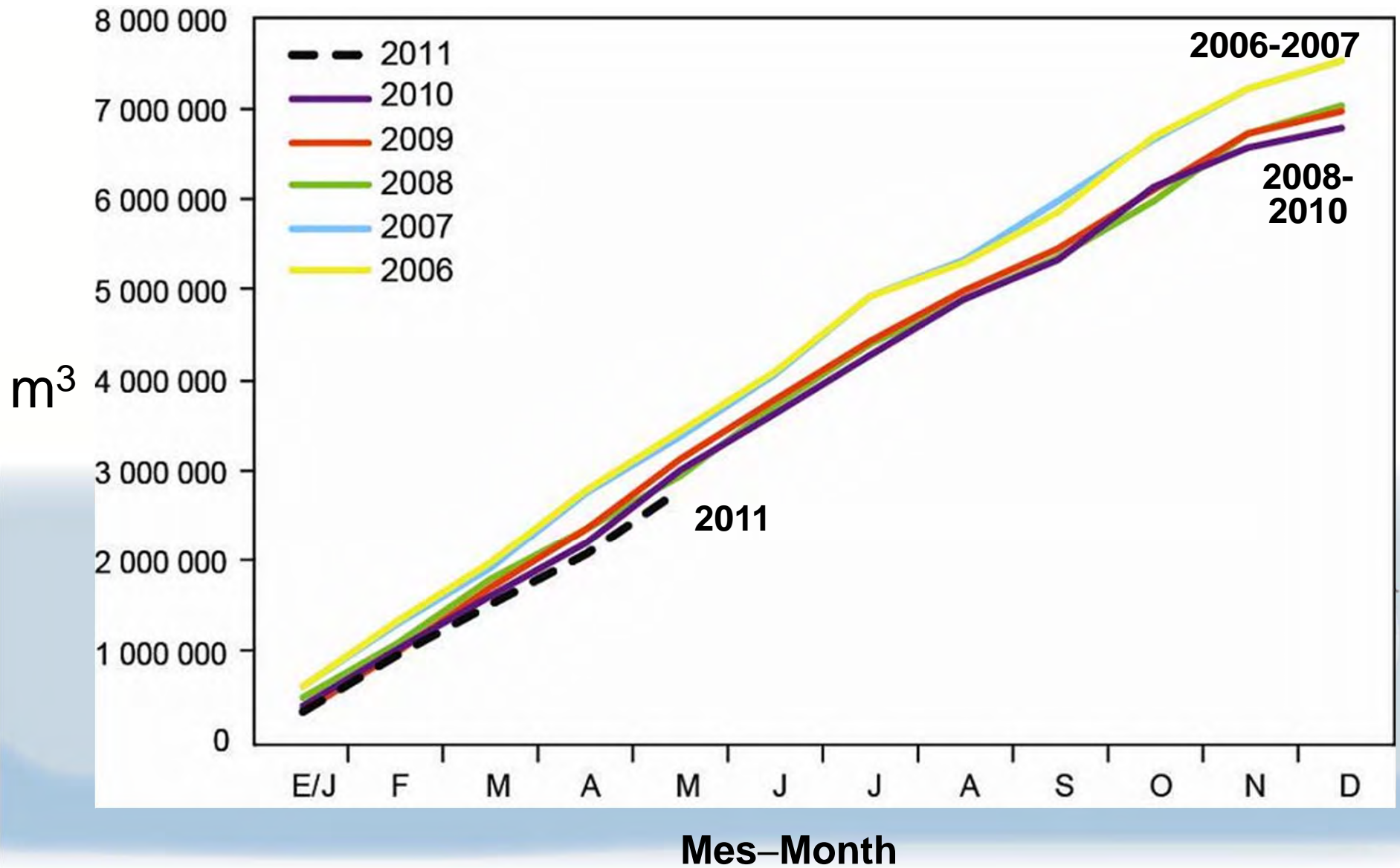


58 000 mt

20% Lower—Menor

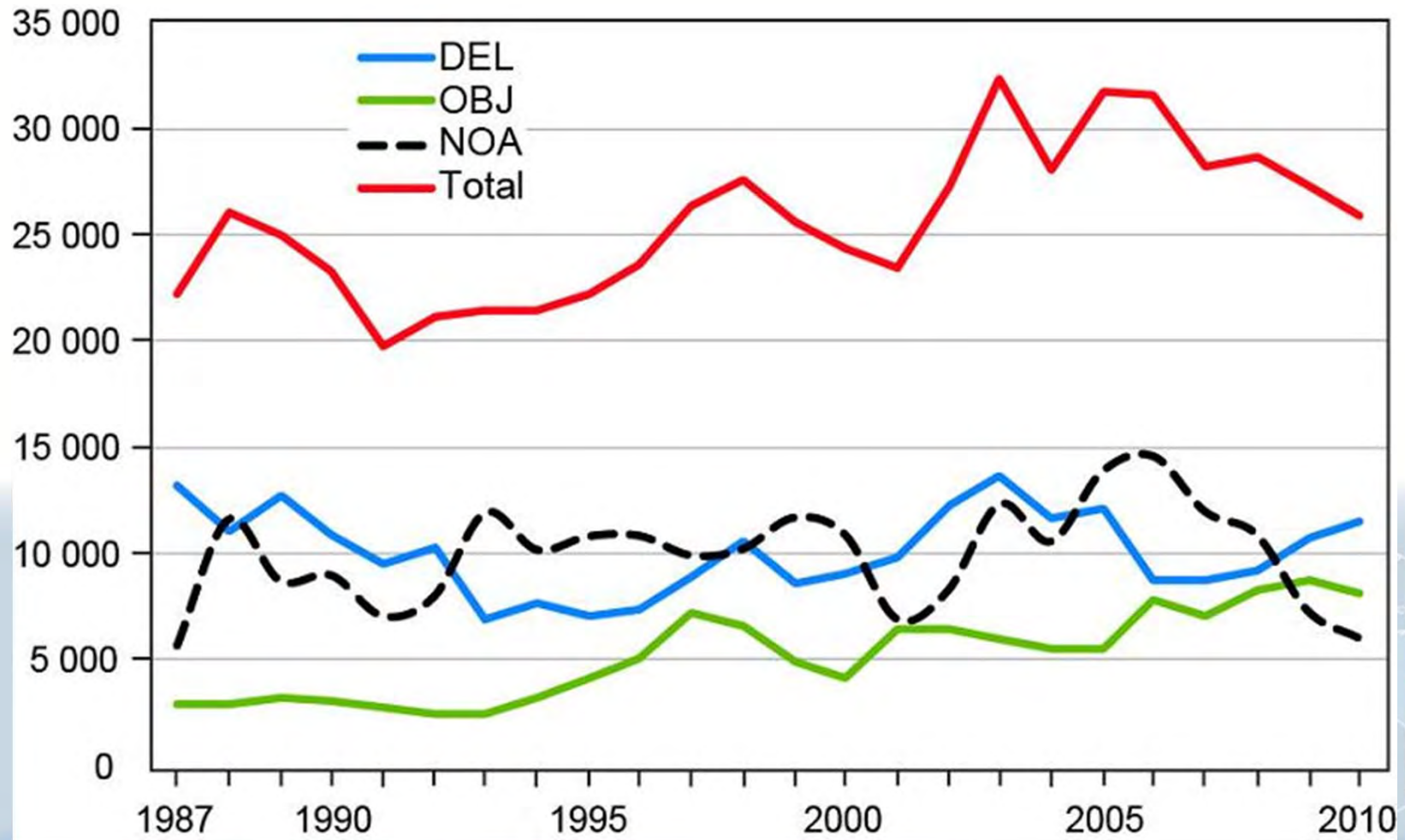
IATTC

Capacidad acumulativa en el mar – Cumulative capacity at sea

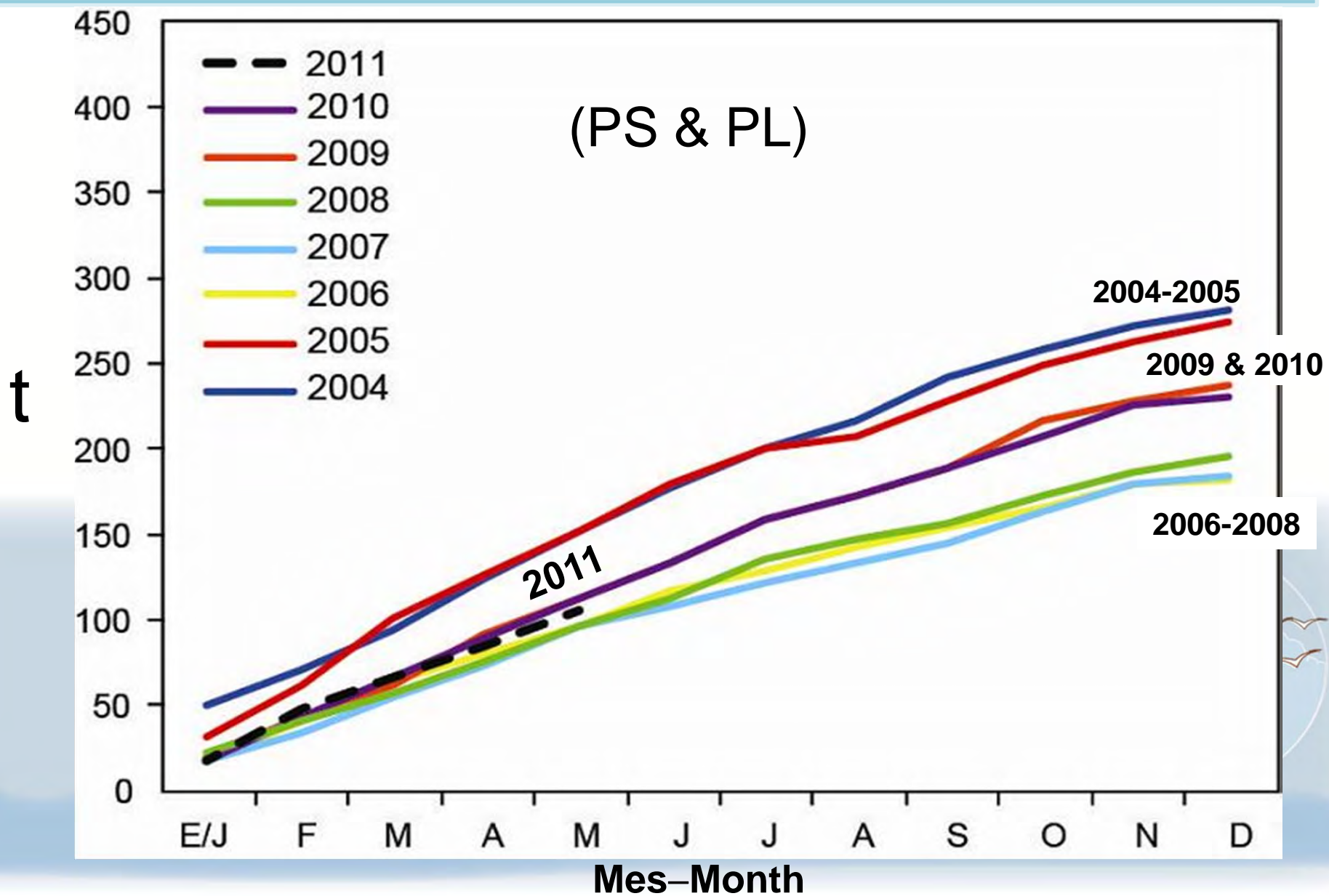


Números estimados de lances, por tipo de lance

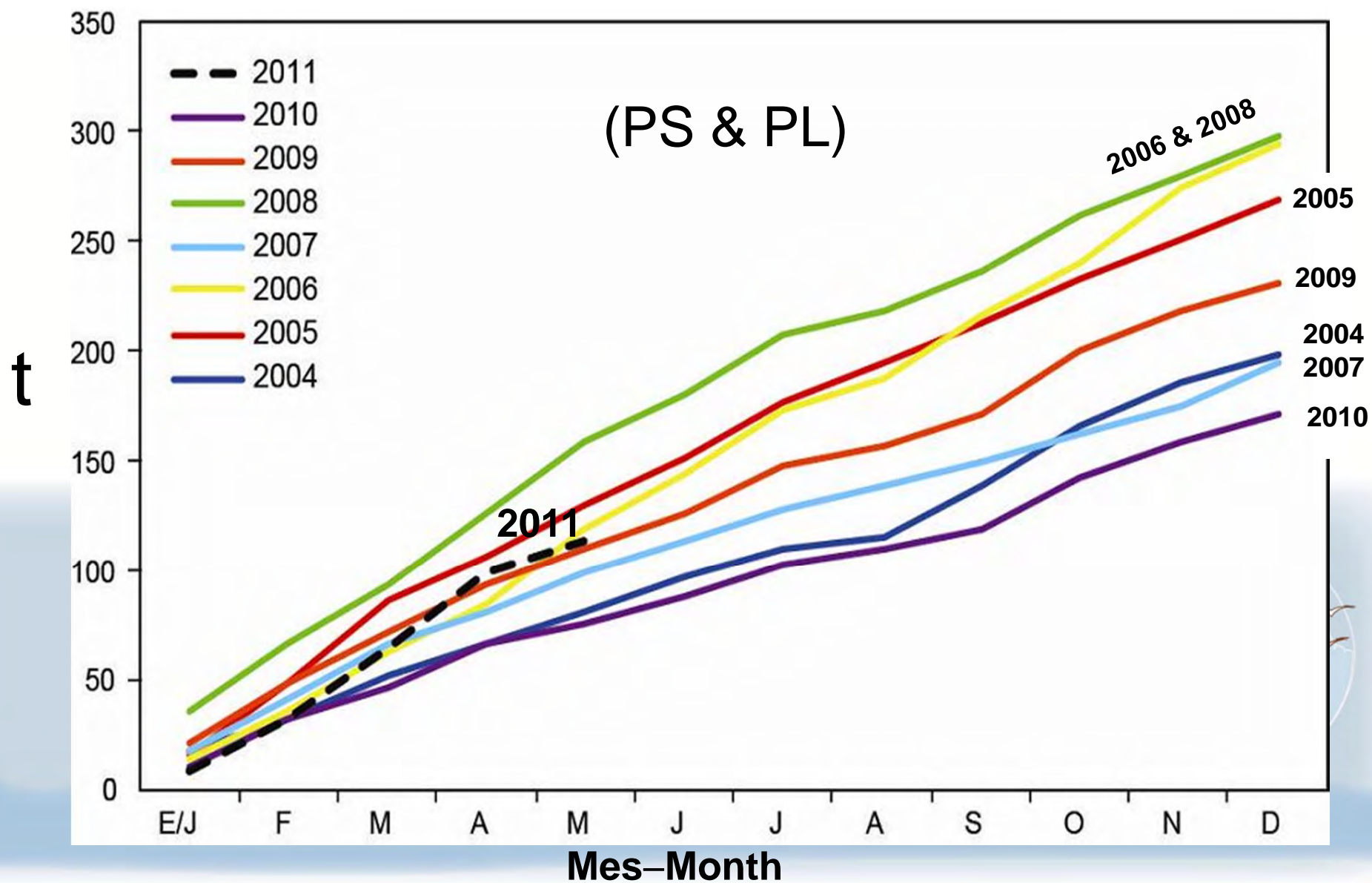
Estimated numbers of sets, by set type



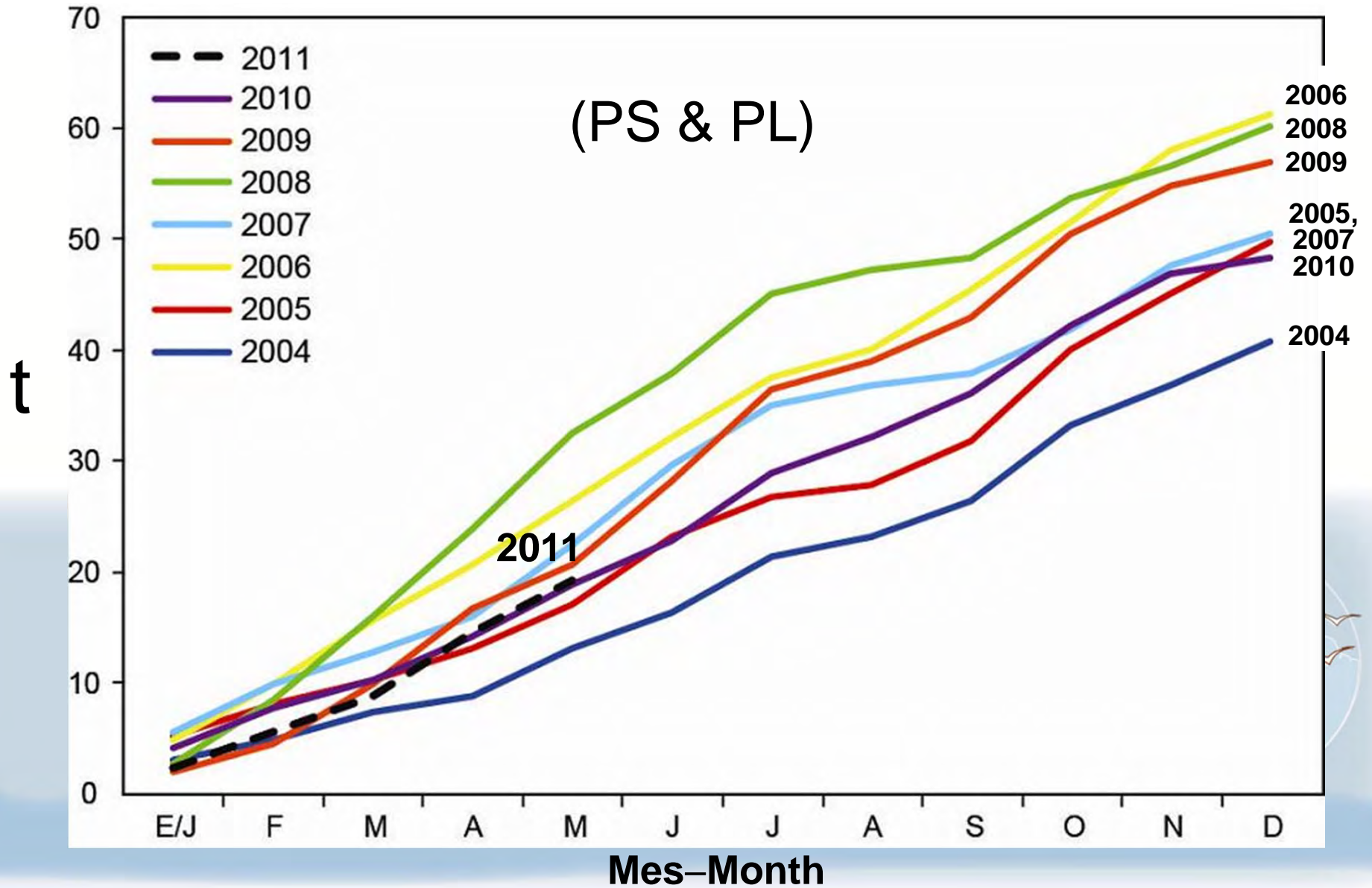
Captura acumulativa de YFT – Cumulative catch of YFT



Captura acumulativa de SKJ – Cumulative catch of SKJ

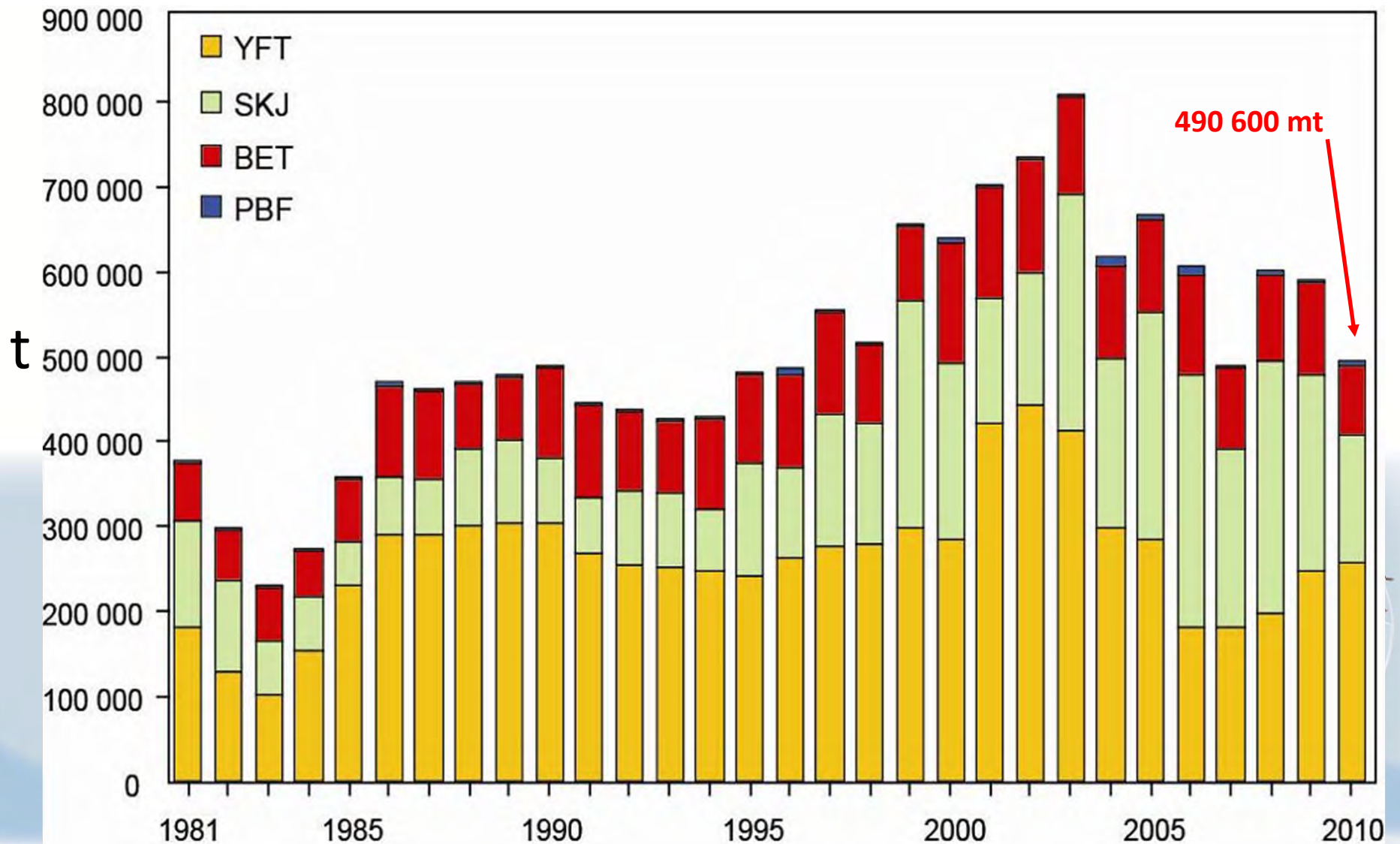


Captura acumulativa de BET – Cumulative catch of BET



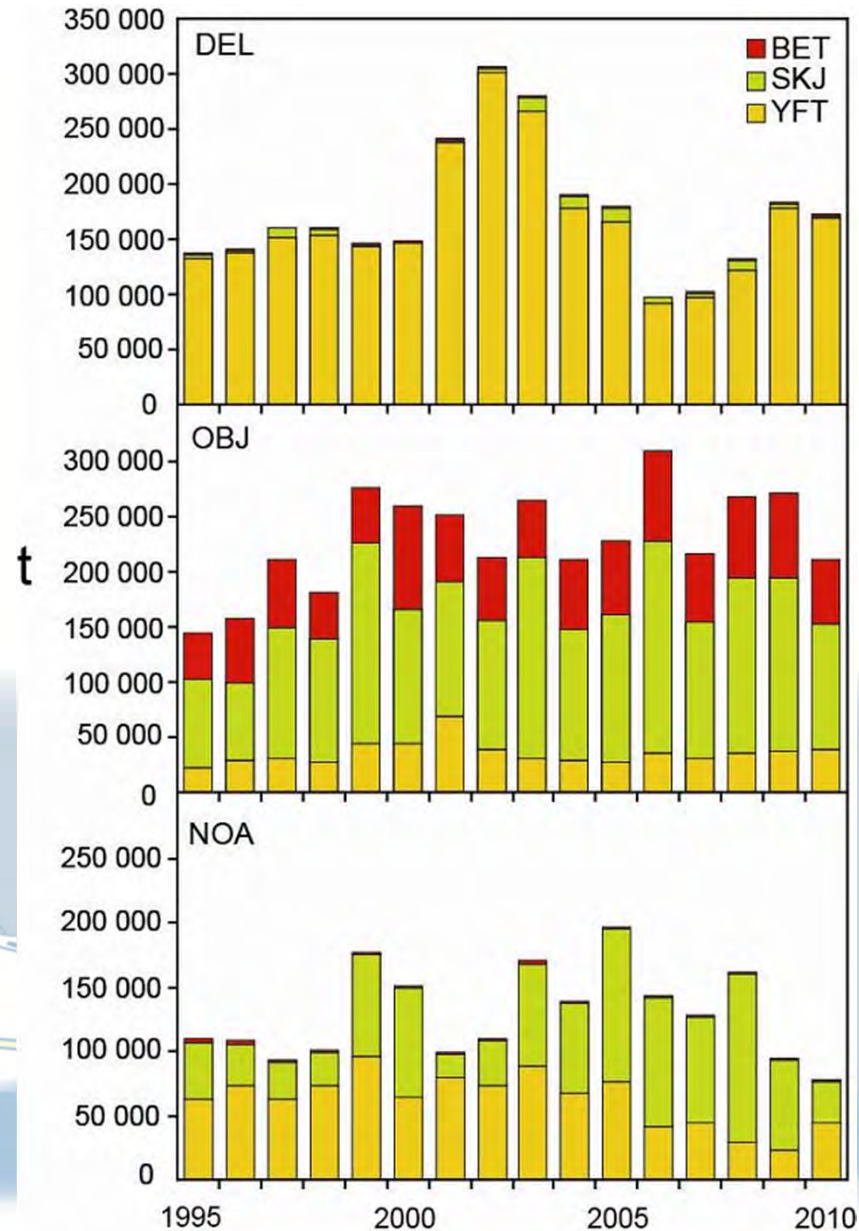
OPO PS, LP, RG, y LL Capturas por especies

EPO PS, LP, RG, and LL catches by species

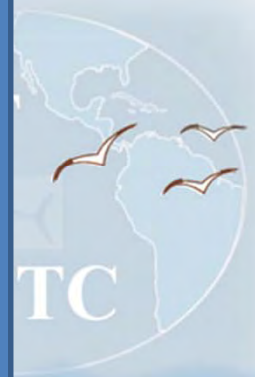
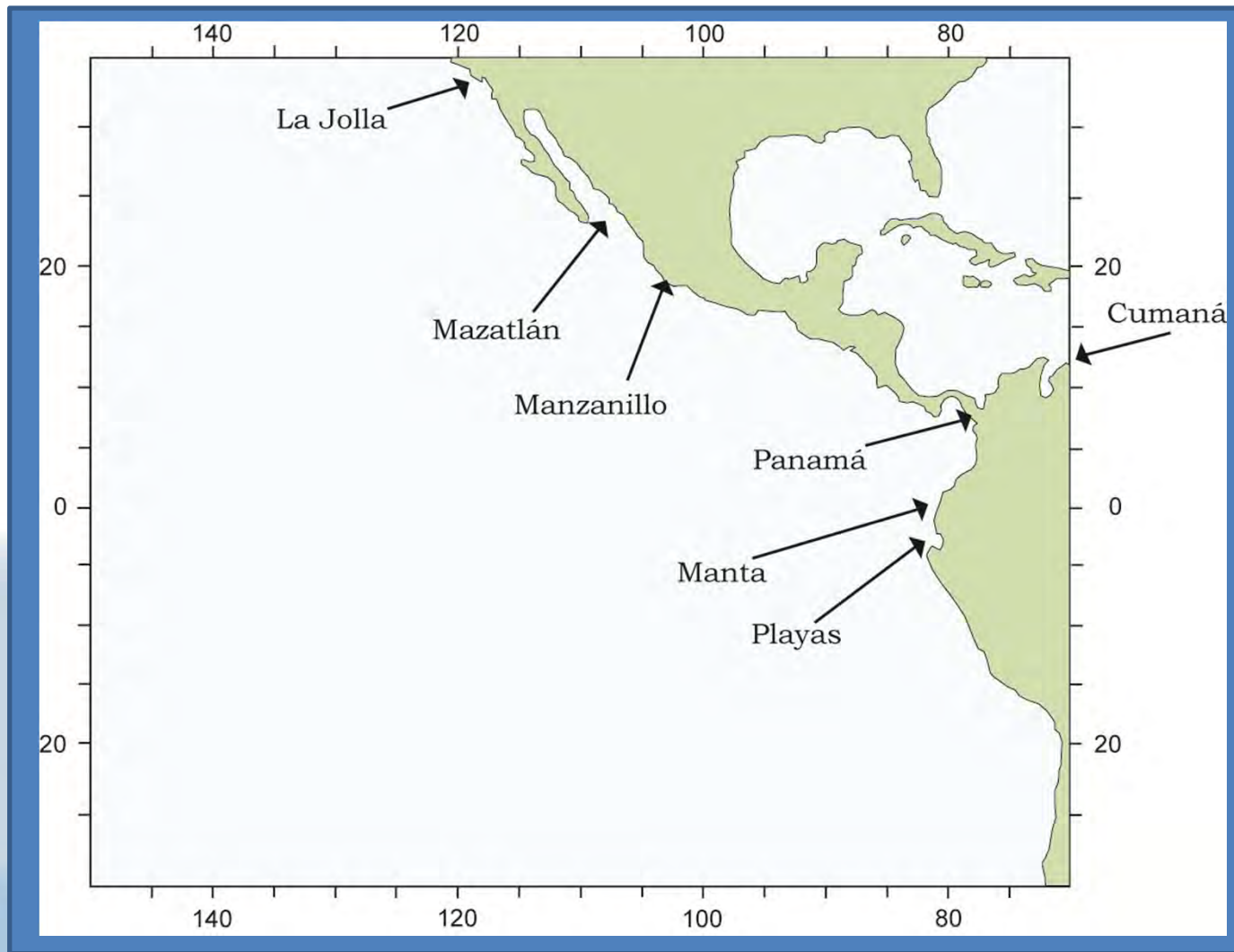


Capturas cerqueras de atunes, por especie y tipo de lance, 1995-2010

Purse-seine catches of tunas, by species and set type, 1995-2010

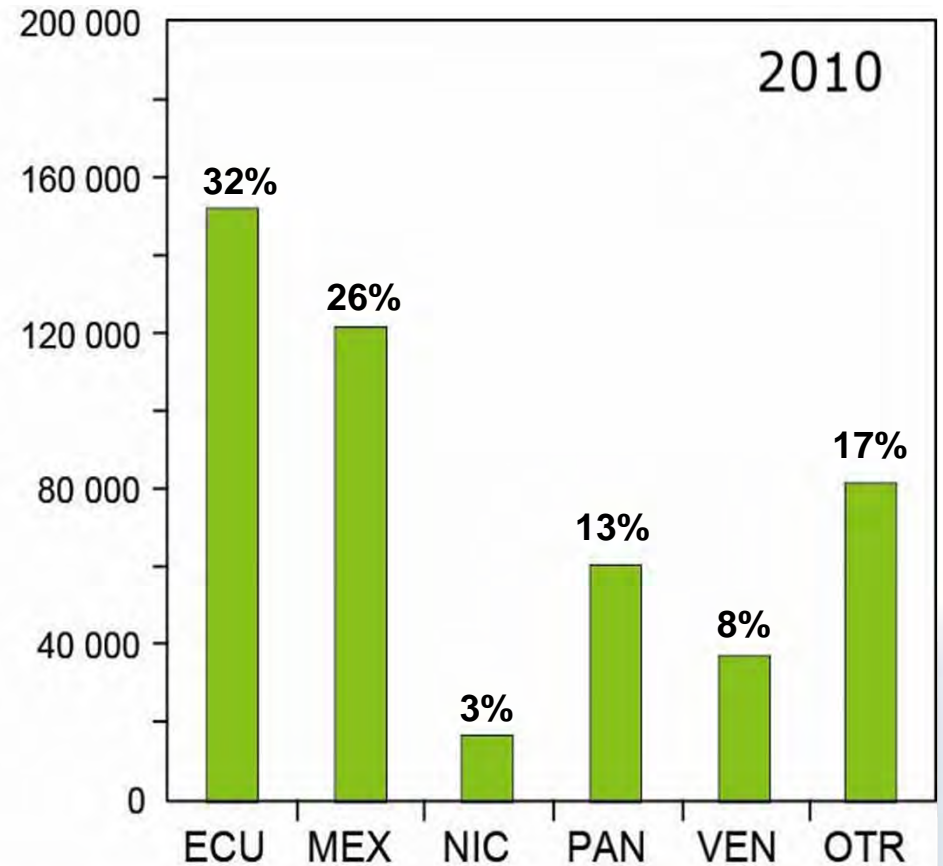
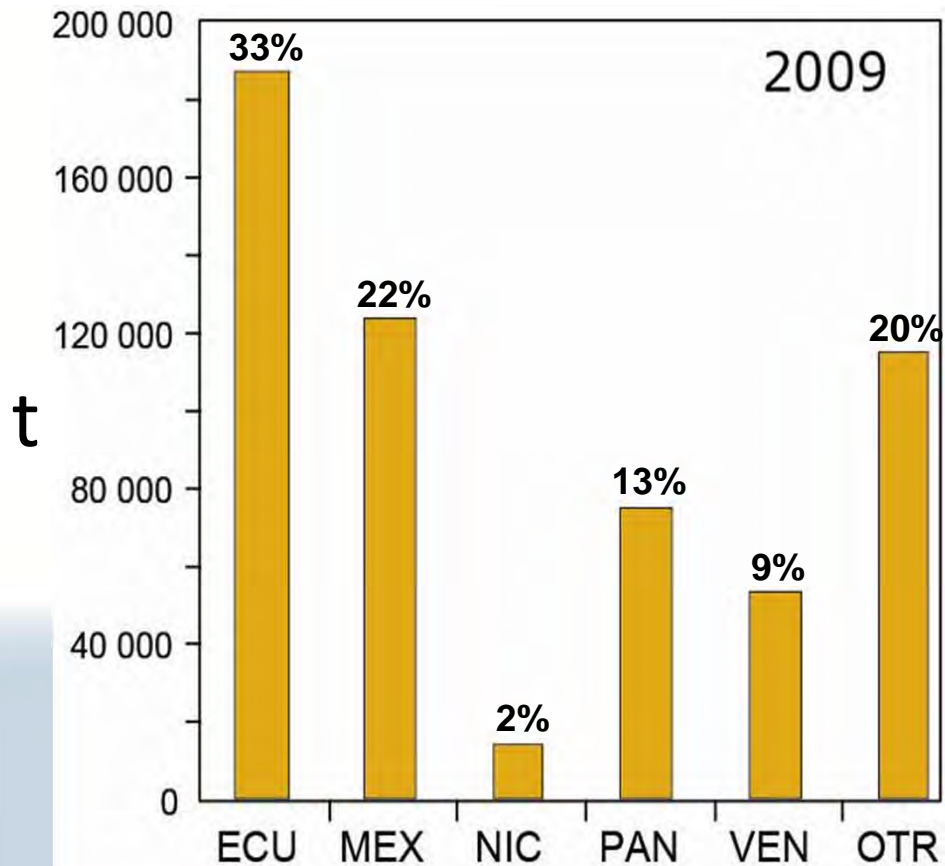


CIAT oficinas de campo – IATTC field offices



OPO PS/LP/RG capturas por país

EPO PS/LP/RG fleet tuna catches by country



Total catch
566 602 mt

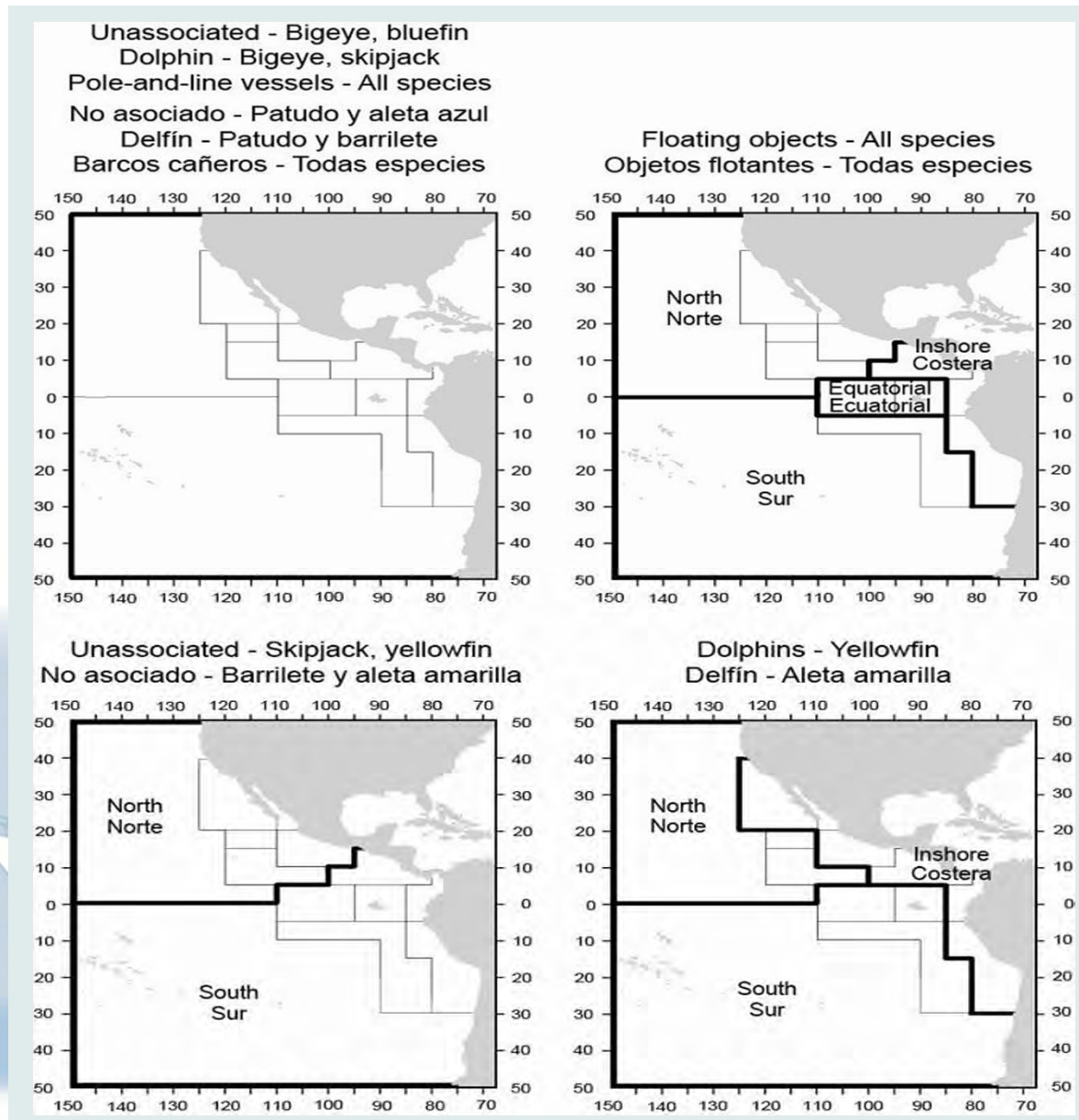
Banderas-Flag

Total catch
470 677 mt

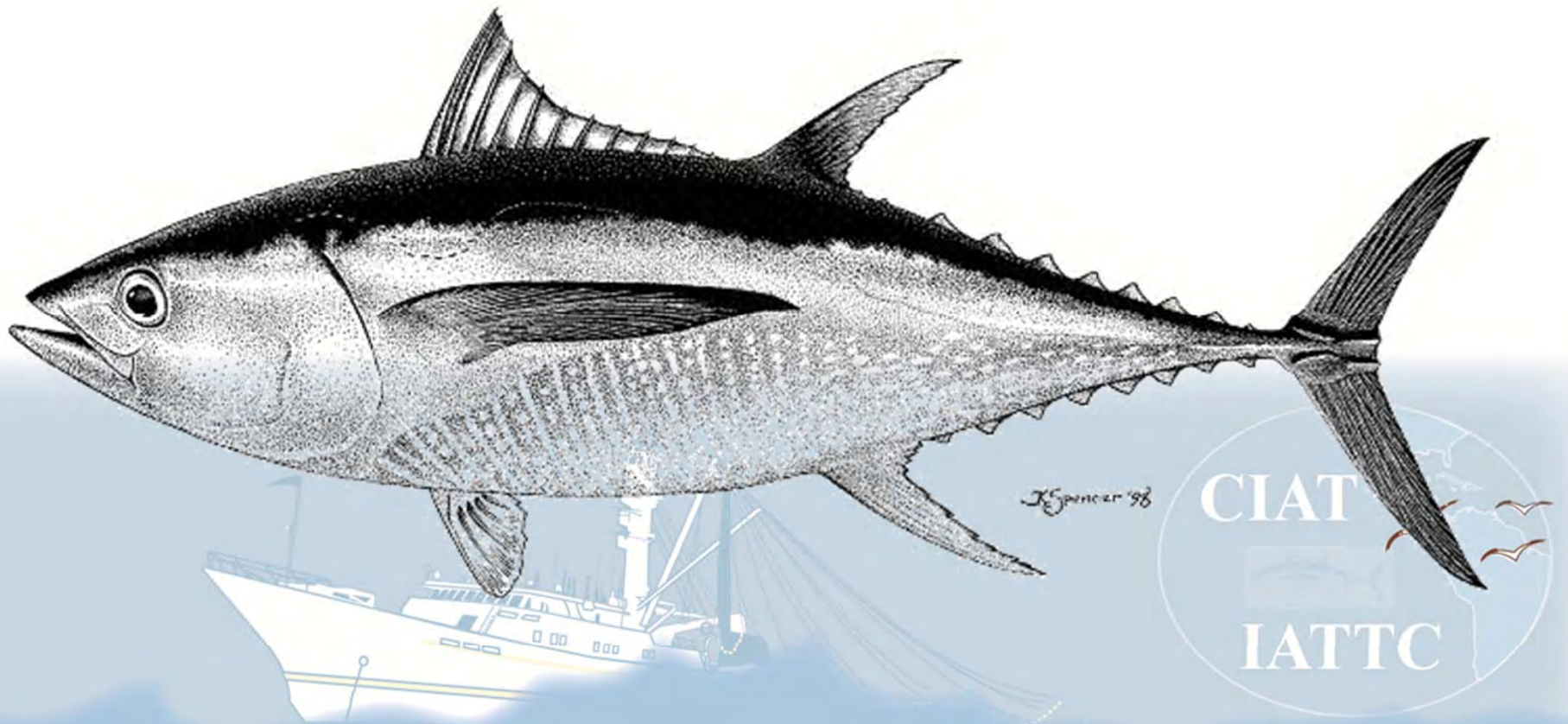
IATTC

Pesquerías definidas para la evaluación de las poblaciones

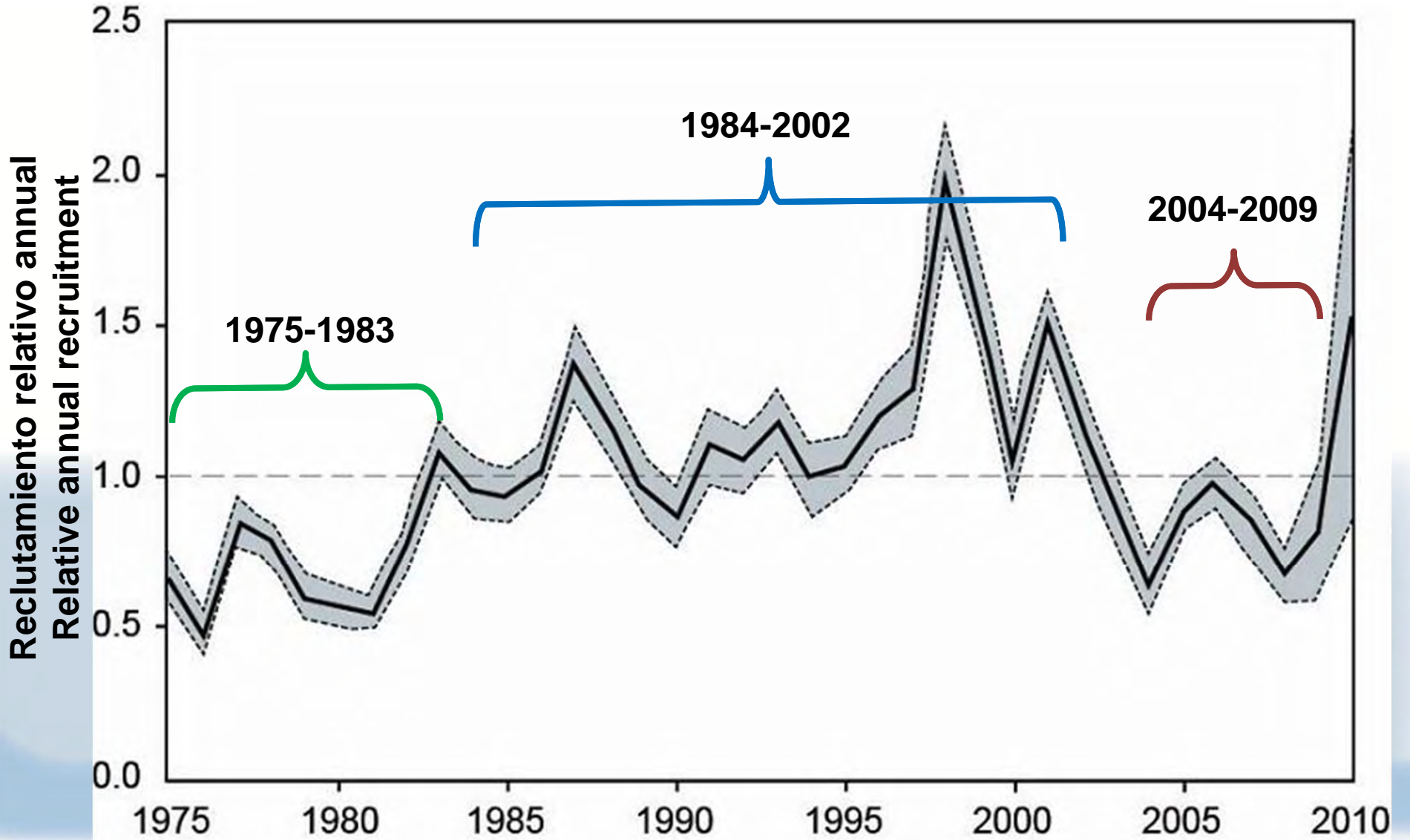
Fisheries defined by the stock assessment



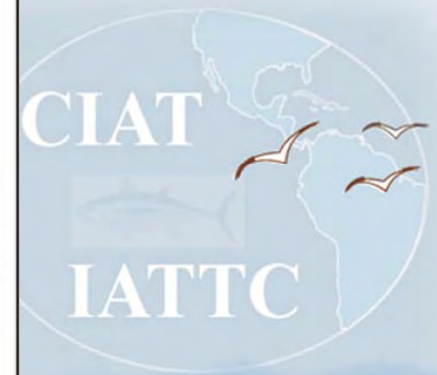
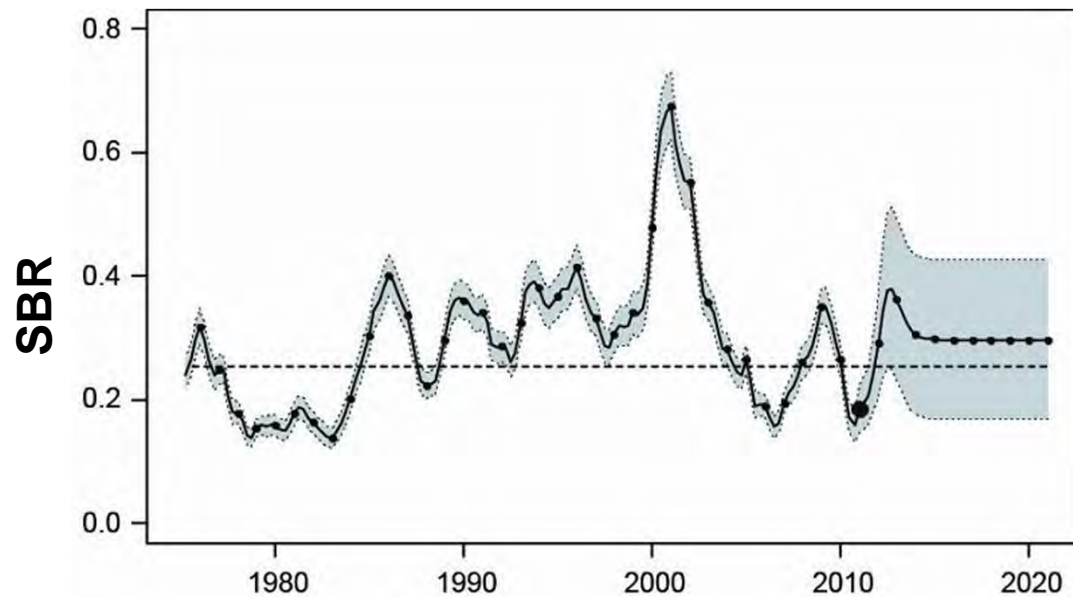
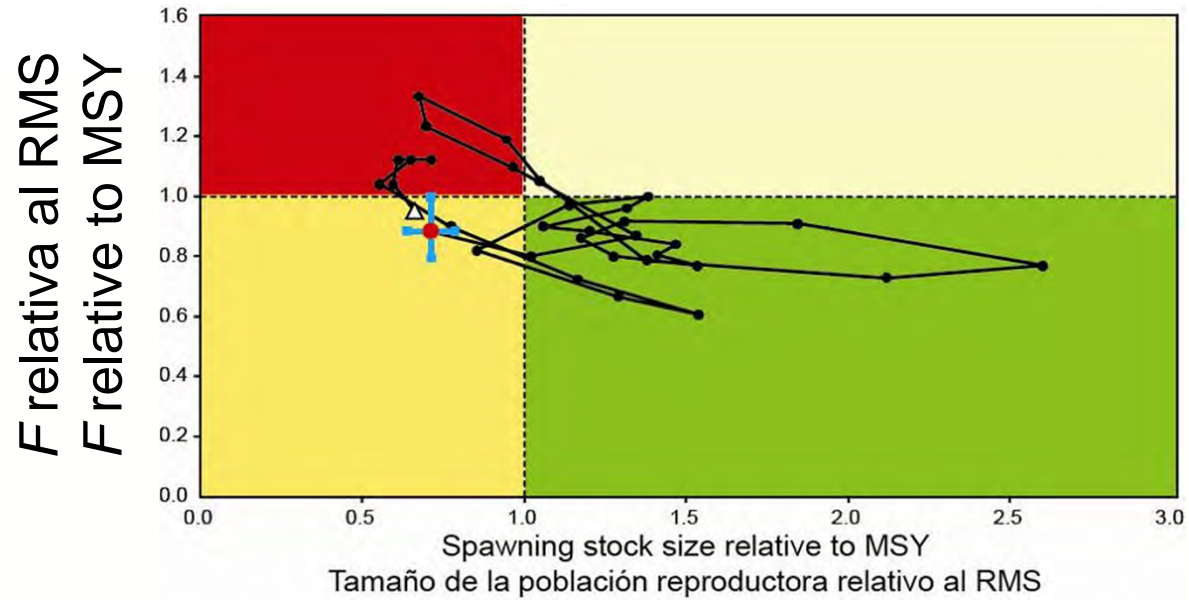
Aleta amarilla-Yellowfin



YFT Reclutamiento – YFT Recruitment



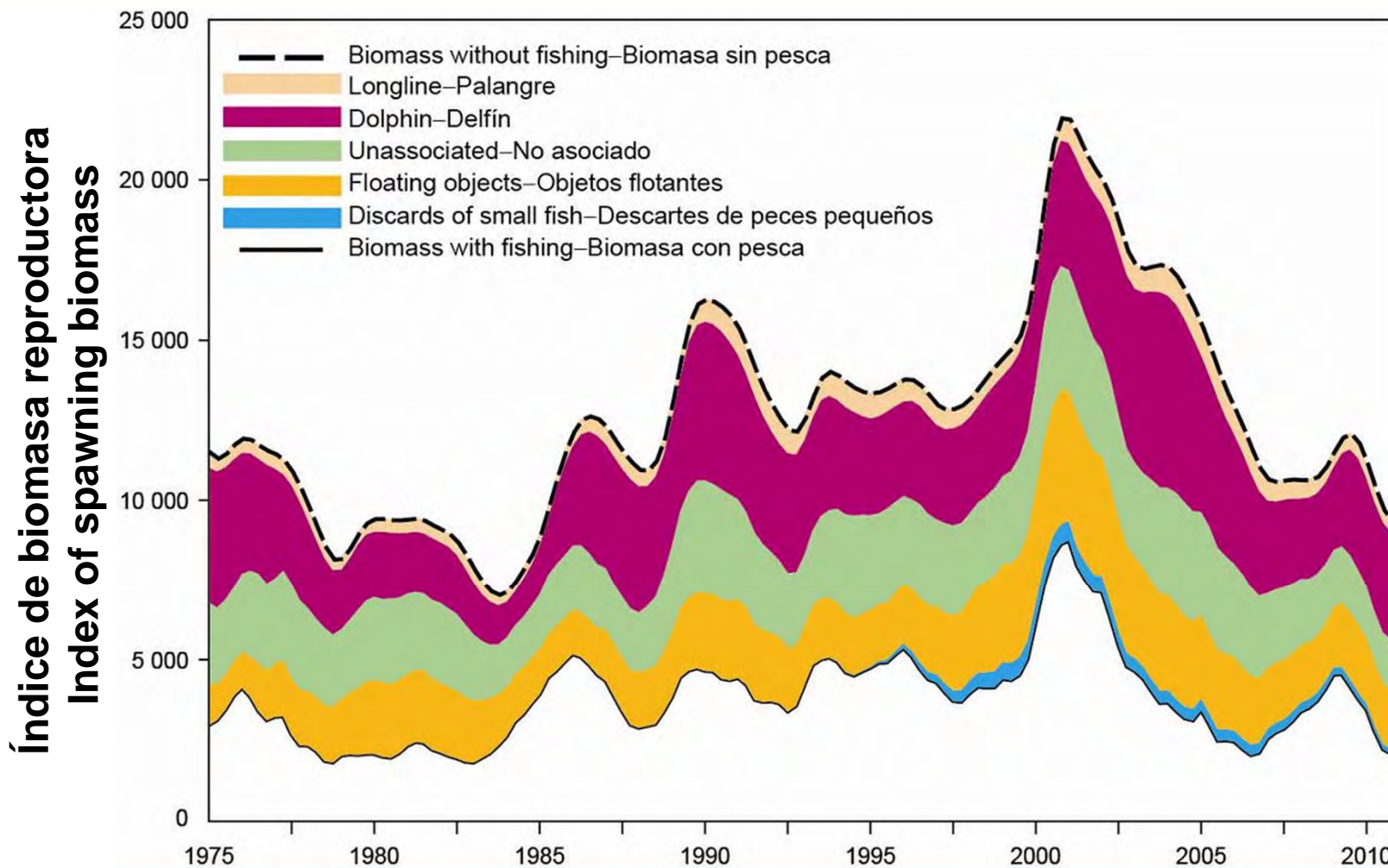
Aleta amarilla – Yellowfin



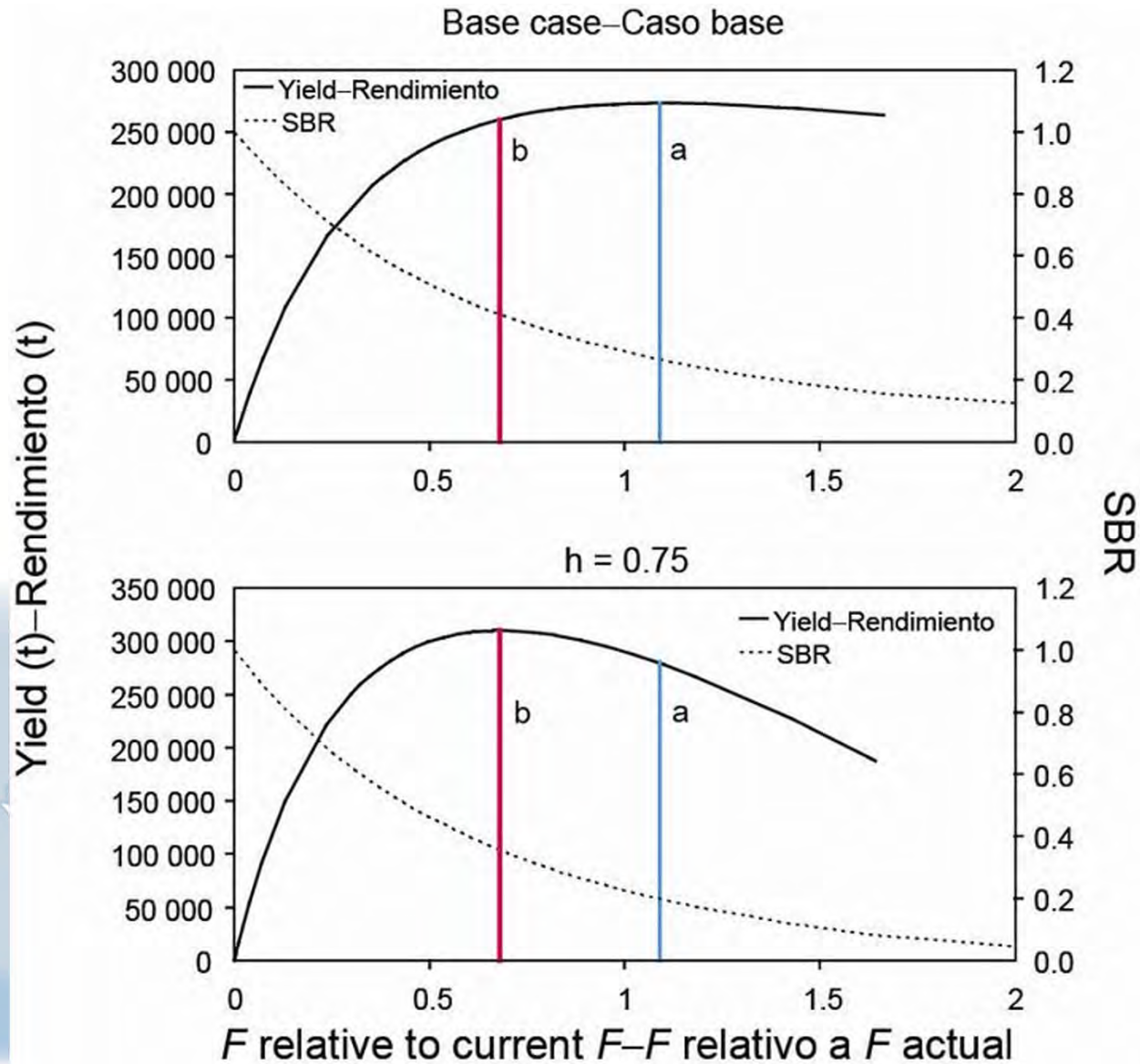
RMS – cantidades – MSY – quantities

	Caso base Base case	$h = 0.75$
RMS–MSY(t)	262 857	291 790
$C_{\text{reciente}}/\text{RMS} - C_{\text{recent}}/\text{MSY}$	0.88	0.8
$S_{\text{reciente}}/S_{\text{RMS}} - S_{\text{recent}}/S_{\text{MSY}}$	0.71	0.39
Multiplicador de F F multiplier	1.13	0.71

YFT Biomasa – YFT Biomass

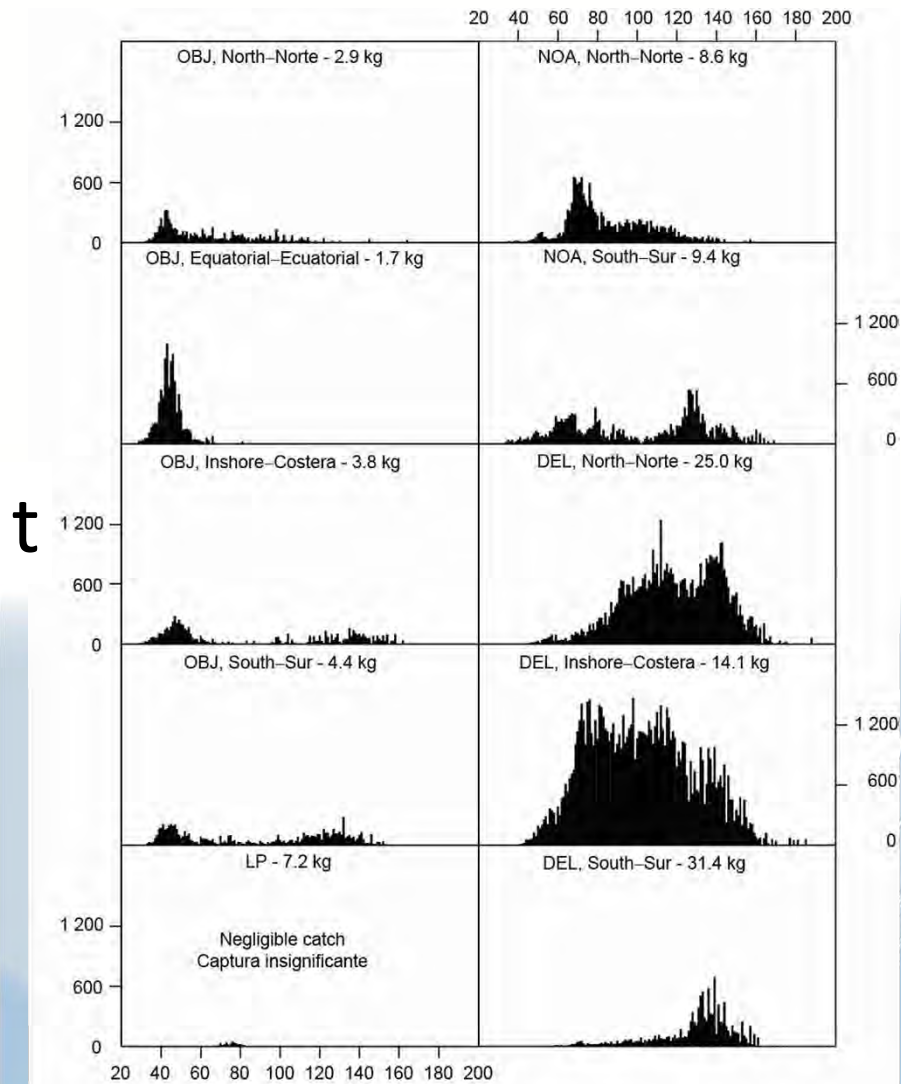


YFT - Rendimiento sostenible – YFT - Sustainable yield

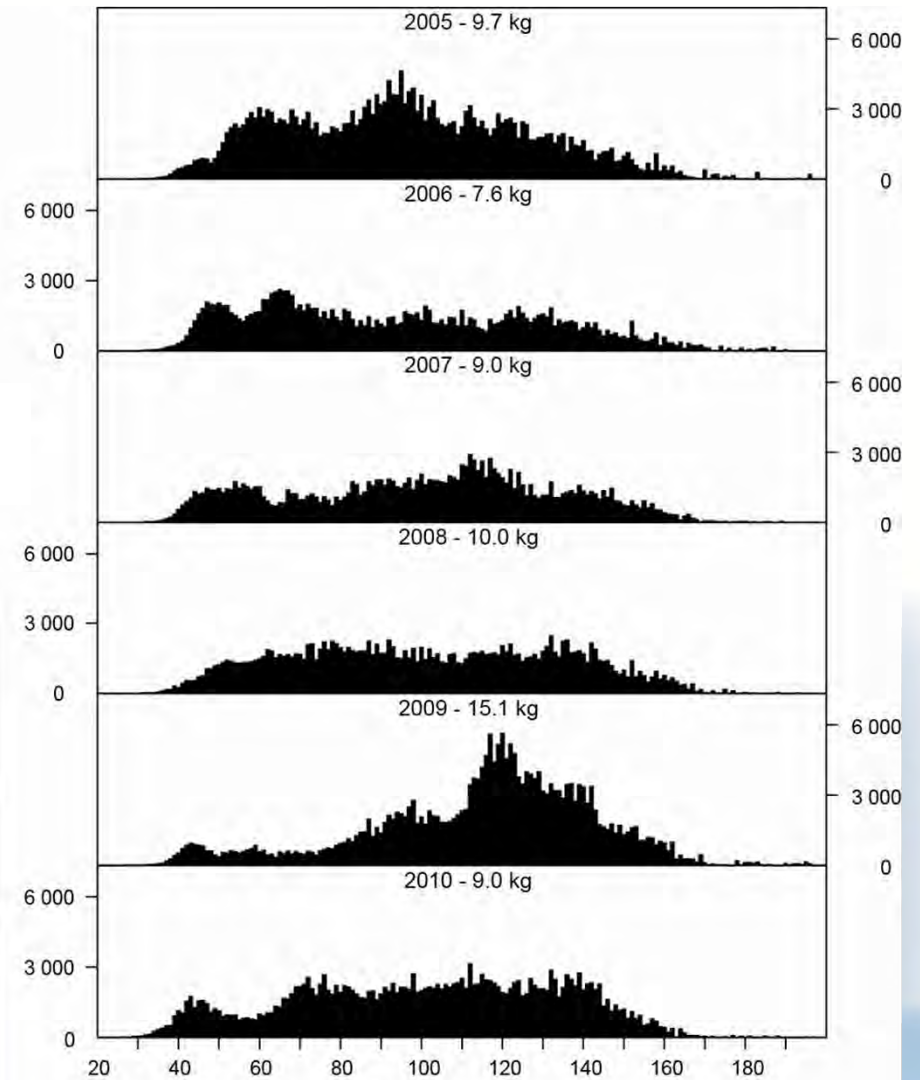


YFT Composición por tallas – YFT Size compositions

2010 by Area

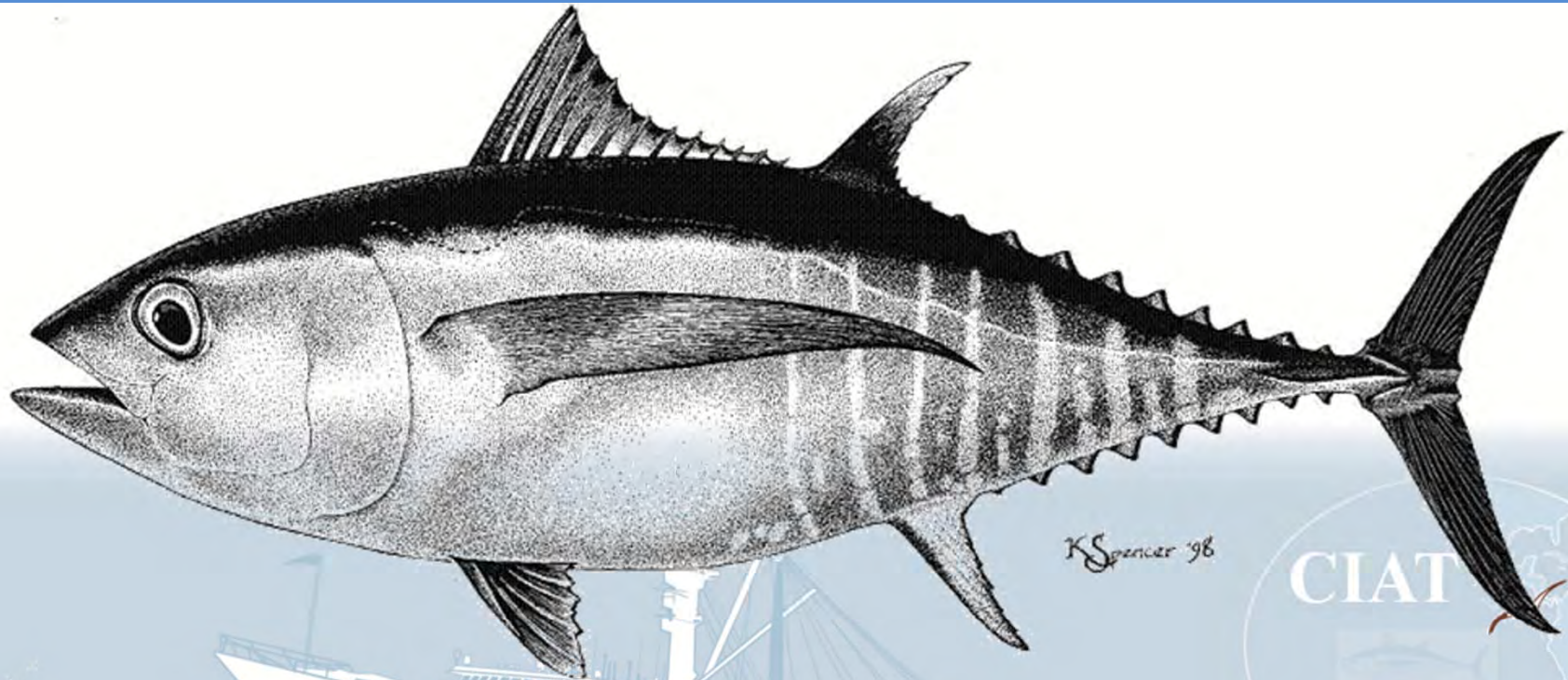


2005 - 2010



Length (cm)–Talla (cm)

Patudo-Bigeye

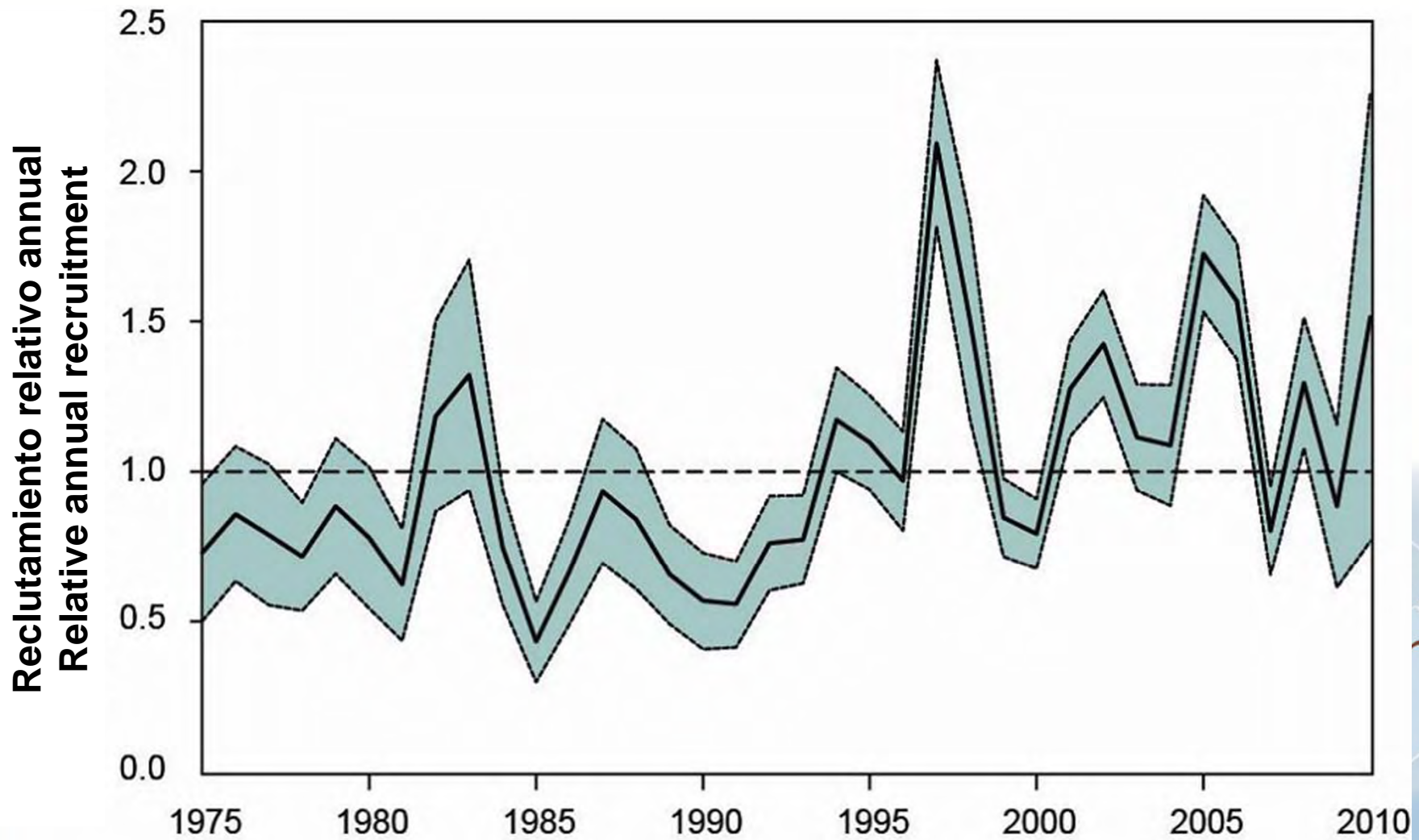


K Spencer '98

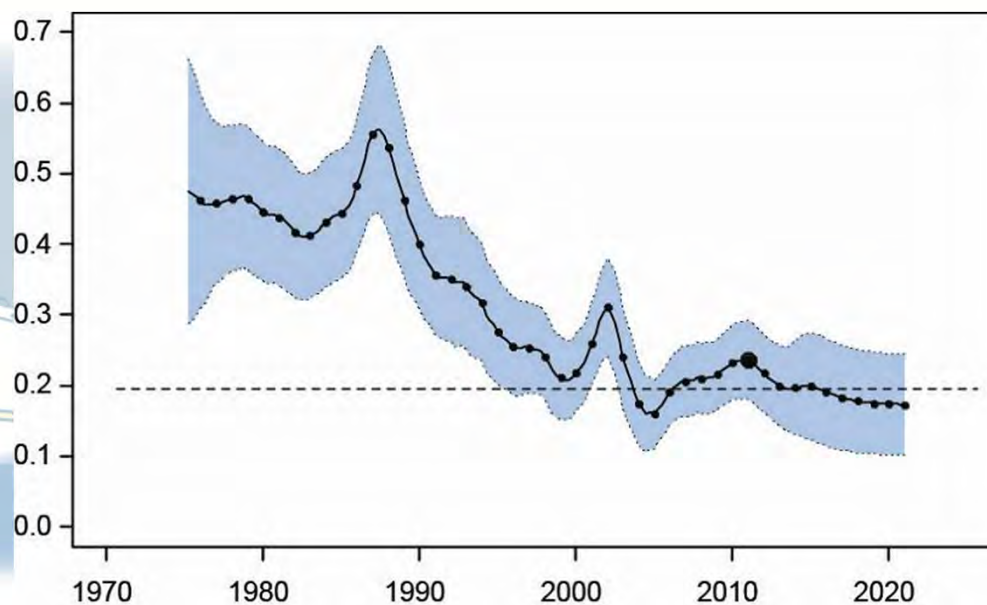
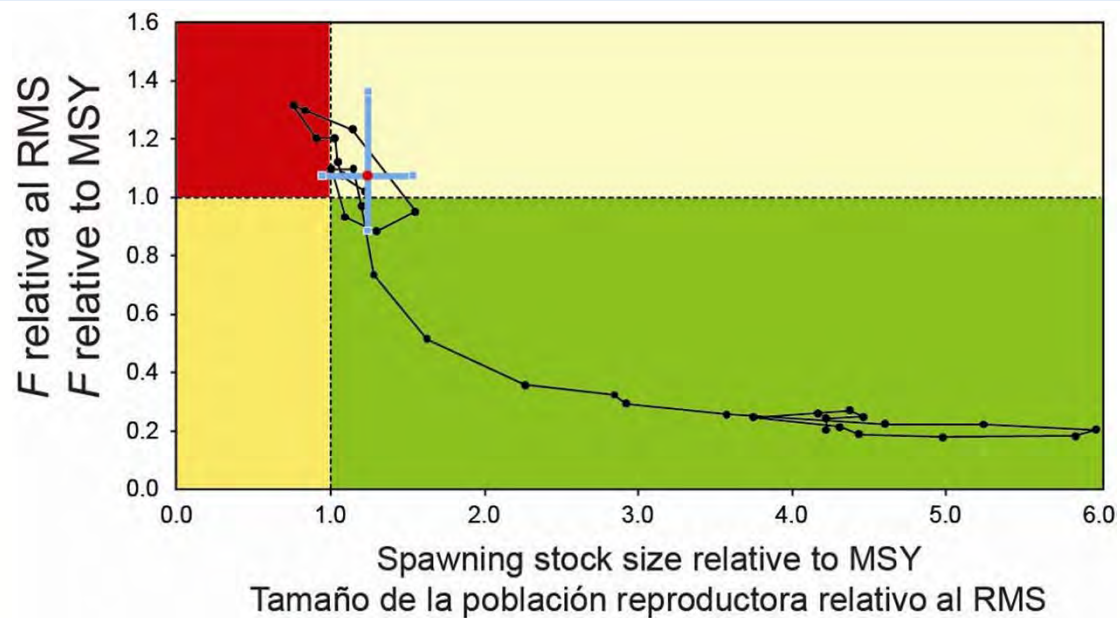
CIAT
IATTC



BET Reclutamiento – BET Recruitment



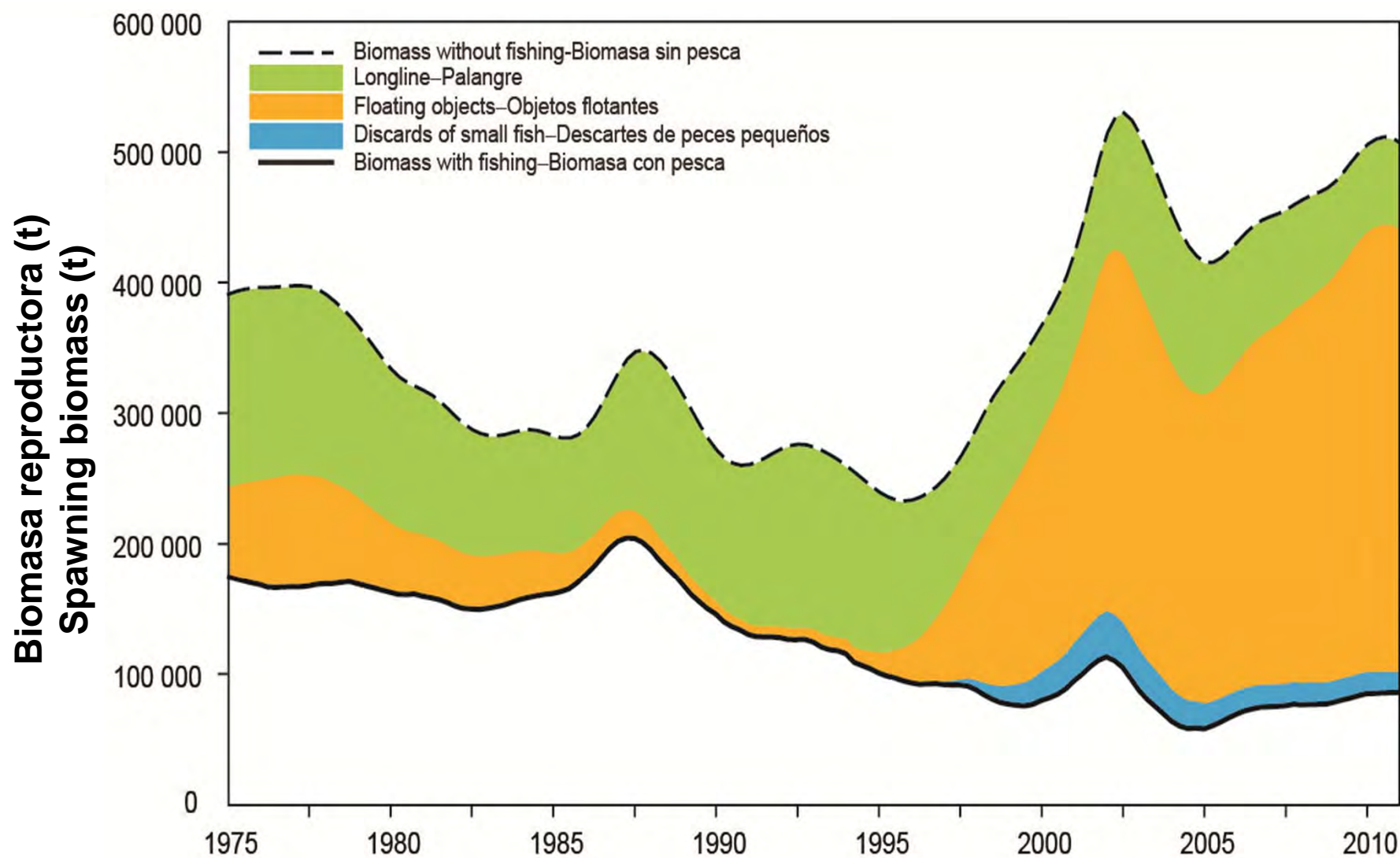
Atún Patudo – Bigeye tuna



RMS – Cantidades – MSY – Quantities

	Caso base Base case	$h = 0.75$
RMS–MSY(t)	80 963	77 473
$C_{\text{reciente}}/\text{RMS} - C_{\text{recent}}/\text{MSY}$	1.08	1.13
$S_{\text{reciente}}/S_{\text{RMS}} - S_{\text{recent}}/S_{\text{MSY}}$	1.21	0.77
Multiplicador de F - F multiplier	0.93	0.65

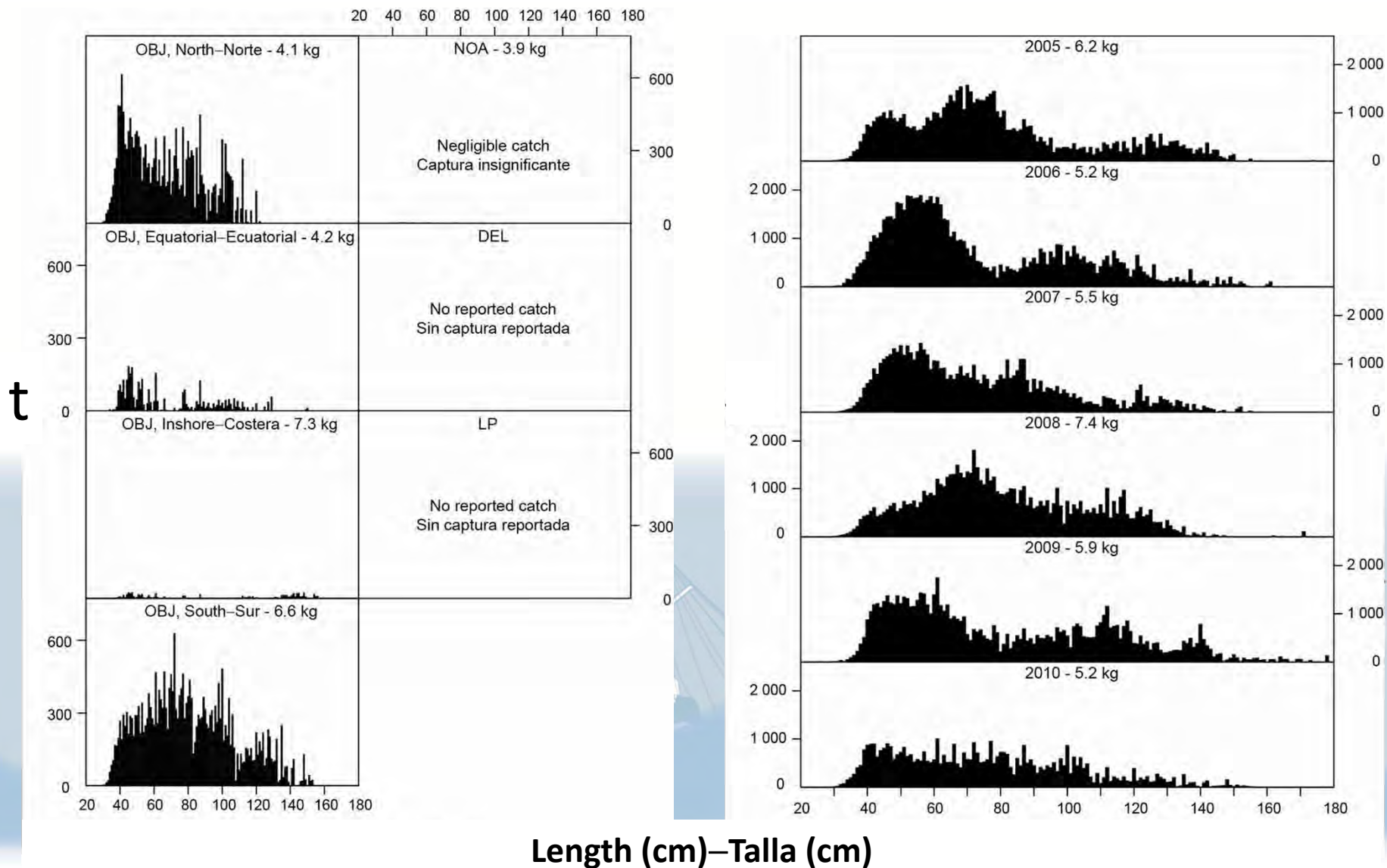
BET Biomasa – BET Biomass



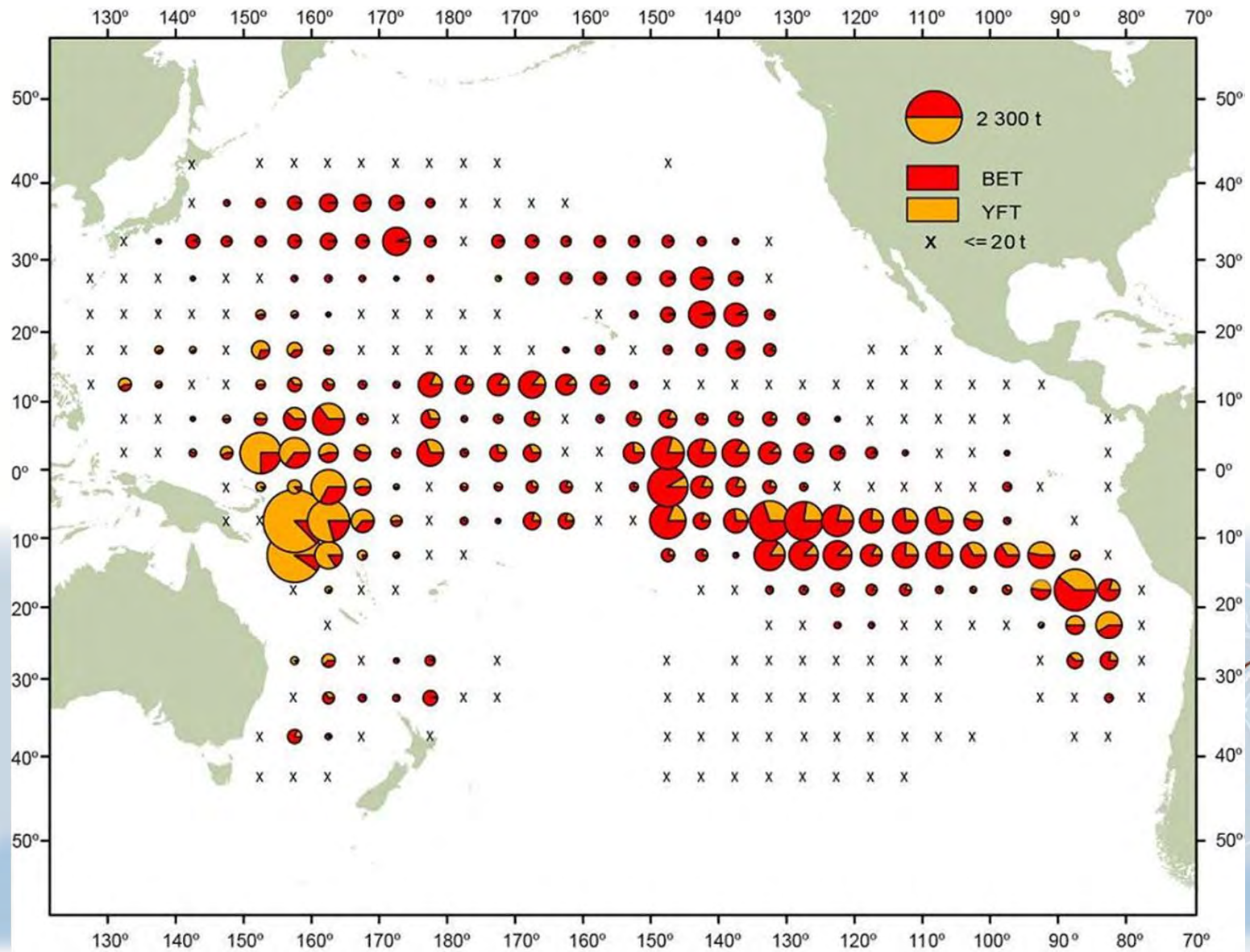
BET Composición por tallas – BET Size compositions

2010 by Area

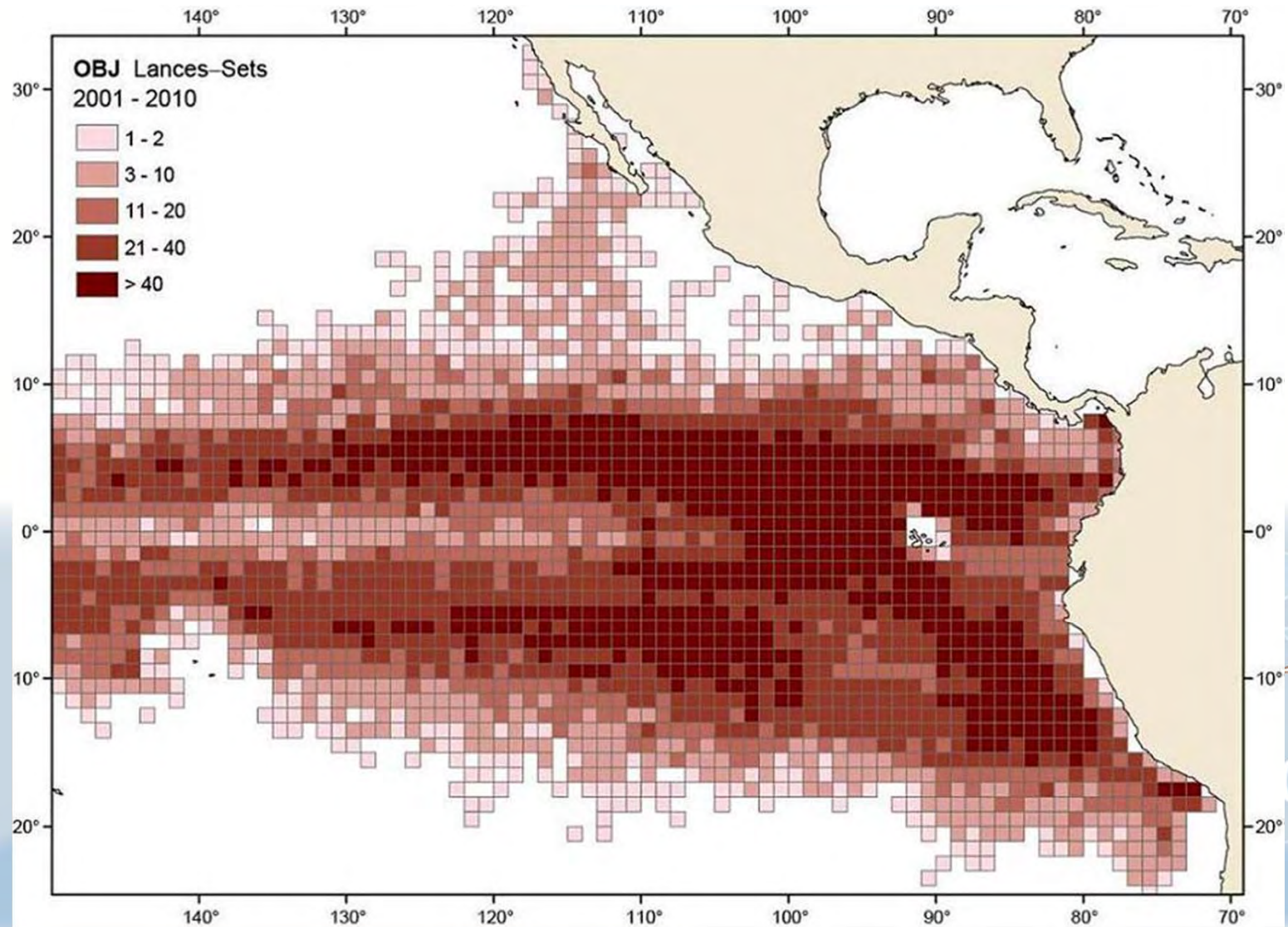
2005 - 2010



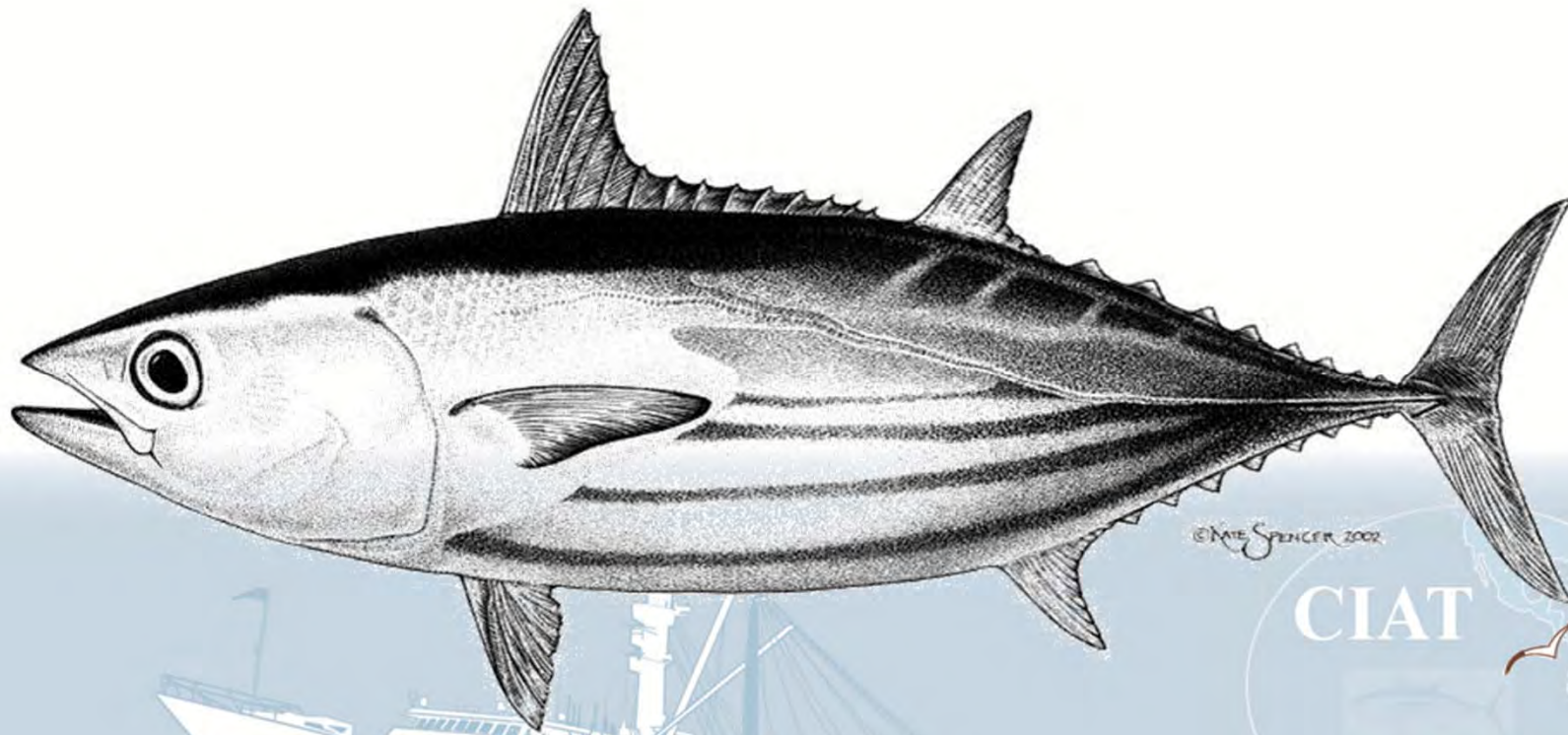
BET distribución de LL – BET LL distribution 2005-2009



OBJ Lances sobre objetos flotantes – OBJ Floating object sets



Barrilete-Skipjack



© MATE SPENCER 2002

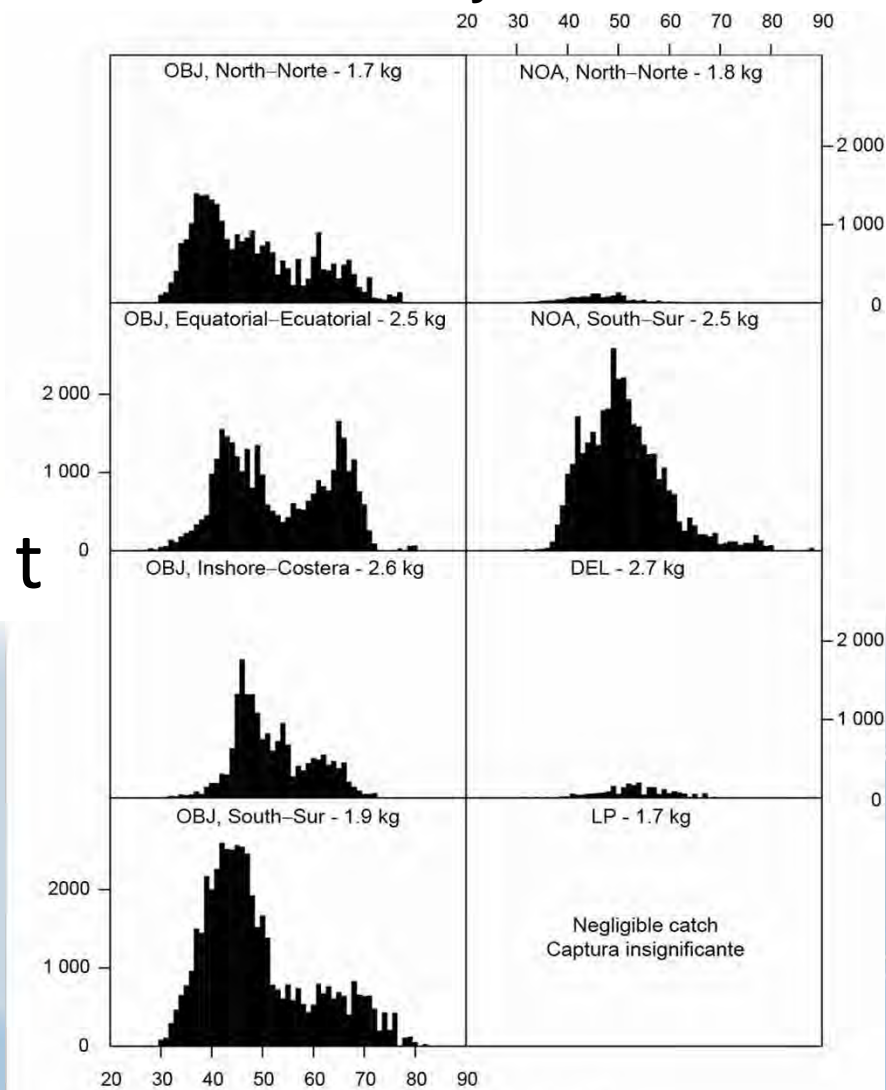
CIAT

IATTC

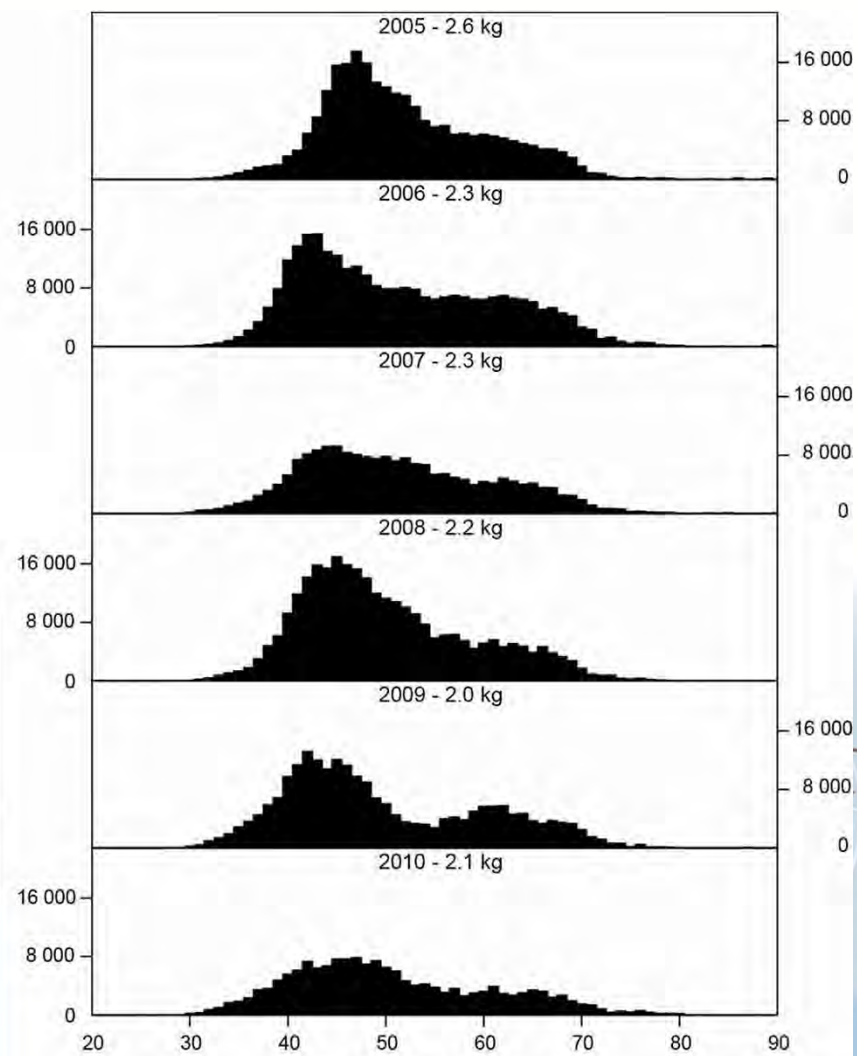


SKJ Composición por tallas – SKJ Size compositions

2010 by Area



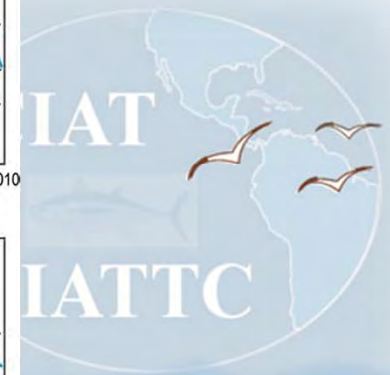
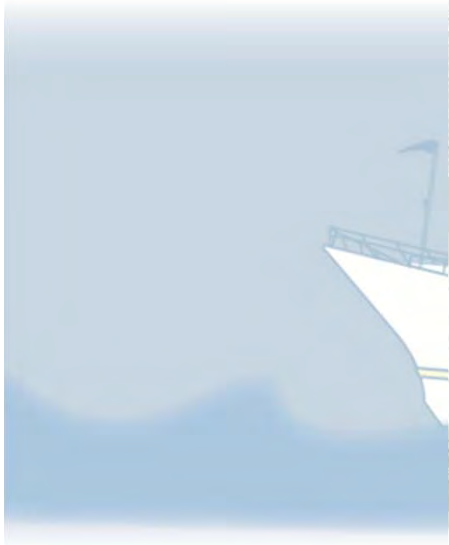
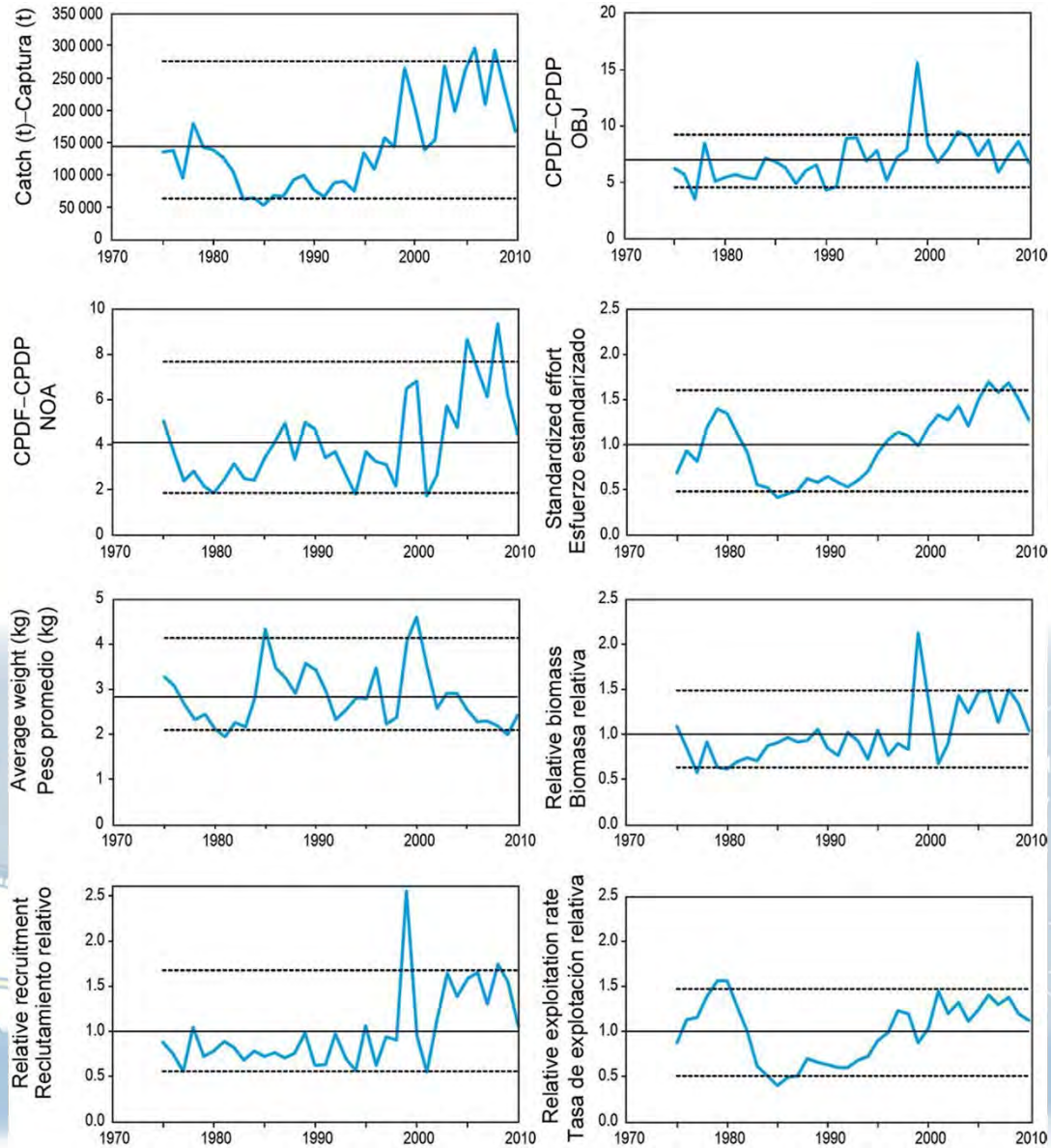
2005 - 2010



Length (cm)–Talla (cm)

SKJ Indicadores del estatus de la población

SKJ Indicators of the stock status



Comisión Interamericana del Atún Tropical–Inter-American Tropical Tuna Commission



¿PREGUNTAS? QUESTIONS?



© FAO 2011