

INTER-AMERICAN TROPICAL TUNA COMMISSION

SCIENTIFIC ADVISORY COMMITTEE

17TH MEETING

La Jolla, California (USA)

08-12 June 2026

SAC-17 INF-W

SOUTH EPO ALBACORE CATCH AND LONGLINE EFFORT STATISTICS (1981–2024)

Haikun Xu and Joydelee Marrow

SUMMARY

Albacore in the south eastern Pacific Ocean (EPO) is predominantly harvested by the longline fishery. Two datasets are used to produce the tables of albacore catch and longline effort presented in this document. The first is the Fishery Status Report catch dataset provided by all CPCs, including total albacore catch (mt) in the EPO by year and gear type. The second is the public-domain longline dataset provided by longline CPCs (<https://www.iattc.org/en-US/Data/Public-domain>), which includes 5°×5° gridded catch (in number of fish, metric tons, or both) and effort (number of hooks) by year.

Based on the two available datasets, CPCs are divided into two groups: the first group – comprising China, Japan, Korea, French Polynesia, Chinese Taipei, and Vanuatu - includes those CPCs that both contributing to gridded catch and effort data and account for significant proportions of albacore catch in the south EPO. The second group encompasses the remaining CPCs, all of which contribute at most minimally to total albacore catches in the south EPO. For simplicity, all CPCs belonging to the second group are consolidated under a single flag (i.e., “Others”) in the tables and figures presented in this document.

CPC-specific annual albacore catch (mt) and longline effort (1,000 hooks) are summarized by year for the period 1981–2024 across three spatial domains:

1. South of the equator
2. South of 10°S
3. IATTC-WCPFC overlap area

For CPCs belonging to the first group, total annual catches in the EPO (mt) - extracted from the first dataset - are allocated to each spatial domain according to the proportion of albacore catch by spatial domain derived from the second dataset. Catch in metric tons is used for the allocation where available; otherwise, catch in numbers is applied. For CPCs belonging to the second group, area-specific catches are calculated based on either the proportion of albacore catch by spatial domain extracted from the second dataset where available, or the spatial domain in which the respective CPC’s EEZ is located where gridded data from the second dataset are unavailable.

Disclaimer: The annual total albacore catches in the south EPO (final column of Table 1) have the same values as those presented in Table A6 of the Fishery Status Report (SAC-17-01). The allocation of this total

catch within the EPO (Tables 2 and 3) is dependent on CPC-specific data available and the allocation rules specified at the time of preparation of this document. Accordingly, Tables 2 and 3 are considered preliminary, and their values are subject to minor revision should this document require updating in the future.

Table 1. Annual albacore catch (mt) in the south eastern Pacific Ocean by year and CPC.

Year	CHN	JPN	KOR	PYF	TWN	VUT	Others	Total
1981	0	1171	1762	0	2302	0	35	5270
1982	0	616	2192	0	3628	0	2	6438
1983	0	1628	2226	0	2007	0	2	5863
1984	0	1071	1565	0	1484	0	24	4144
1985	0	892	3330	0	1733	0	170	6125
1986	0	1382	2180	0	2190	0	223	5975
1987	0	1651	2532	0	4697	0	191	9071
1988	0	3079	2017	0	3939	0	1282	10317
1989	0	1161	556	0	4115	0	683	6515
1990	0	1348	424	0	3621	0	1642	7035
1991	0	2069	1060	0	3250	0	965	7344
1992	0	2042	586	24	12793	0	1223	16668
1993	0	2864	415	34	6109	0	54	9476
1994	0	2940	457	257	4380	0	468	8502
1995	0	2044	971	261	1529	0	17	4822
1996	0	1552	638	553	3213	0	115	6071
1997	0	1299	467	1376	5171	0	466	8779
1998	0	2856	1721	2089	4239	0	12	10917
1999	0	2043	817	574	5498	0	88	9020
2000	0	928	335	2638	3600	282	781	8564
2001	1436	1861	353	3542	6362	294	4259	18107
2002	1182	2449	301	2545	6454	794	508	14233
2003	1492	2103	340	3233	12496	3640	884	24188
2004	441	2252	764	1802	9846	2249	565	17919
2005	648	2578	172	1572	3267	666	225	9128
2006	10	2204	229	2387	2333	3098	60	10321
2007	68	1912	73	3049	1352	1979	72	8505
2008	135	1007	23	2460	1508	3084	0	8217
2009	325	1650	73	3147	2276	4720	3	12194
2010	240	1469	491	2754	3625	4769	23	13371
2011	1722	2830	441	2596	4573	2365	52	14579

2012	4357	2215	194	2762	5359	4916	55	19858
2013	9142	1651	490	2614	3762	1760	56	19475
2014	15858	903	200	2415	3169	2956	427	25928
2015	13566	756	248	3073	3752	4904	794	27093
2016	16231	906	578	2908	2732	1178	907	25440
2017	16767	1081	559	1623	2438	998	734	24200
2018	15253	1131	576	2458	2911	854	1644	24827
2019	9478	1002	575	2584	3783	1453	727	19602
2020	7707	841	580	2417	4625	374	911	17455
2021	21308	903	949	2242	3012	1672	144	30230
2022	22079	1119	889	3302	2658	147	193	30387
2023	20669	295	542	3485	3678	47	21	28737
2024	27135	218	1415	3827	1707	150	57	34509

Table 2. Annual albacore catch (mt) in the eastern Pacific Ocean south of 10°S by year and CPC.

Year	CHN	JPN	KOR	PYF	TWN	VUT	Others	Total
1981	0	1063	1698	0	2231	0	35	5027
1982	0	534	2175	0	3622	0	2	6333
1983	0	1501	2118	0	1997	0	2	5618
1984	0	1033	1533	0	1484	0	24	4074
1985	0	835	3238	0	1733	0	170	5976
1986	0	1273	2049	0	2190	0	223	5735
1987	0	1494	2077	0	4697	0	191	8459
1988	0	2617	1647	0	3929	0	1282	9475
1989	0	1024	533	0	4093	0	683	6333
1990	0	1280	301	0	3607	0	1642	6830
1991	0	1905	797	0	3231	0	965	6898
1992	0	1819	392	15	12769	0	1223	16218
1993	0	2494	288	28	6109	0	54	8973
1994	0	2599	161	253	4347	0	468	7828
1995	0	1624	571	258	1529	0	17	3999
1996	0	1396	477	549	3213	0	115	5750
1997	0	1136	174	1375	5168	0	466	8319
1998	0	2535	1075	2089	4222	0	12	9933
1999	0	1997	746	573	5498	0	88	8902
2000	0	862	219	2510	3597	276	781	8245
2001	1276	1712	220	3524	6228	288	3857	17105
2002	586	2251	160	2545	3930	778	472	10722
2003	694	1827	162	3200	10499	3564	834	20780
2004	278	2104	397	1724	9284	2202	541	16530
2005	440	2407	101	1329	3052	652	221	8202
2006	2	2050	166	2367	2147	3034	59	9825
2007	12	1729	61	3049	1185	1938	72	8046
2008	68	969	20	2460	1486	3076	0	8079
2009	153	1565	57	3146	2221	4711	3	11856
2010	190	1182	397	2754	3463	4503	23	12512
2011	1463	2756	405	2596	4503	2301	52	14076
2012	3754	2052	168	2760	5192	4817	55	18798
2013	8809	1548	452	2613	3672	1739	43	18876
2014	15660	815	181	2415	3034	2825	285	25215

Year	CHN	JPN	KOR	PYF	TWN	VUT	Others	Total
2015	12240	709	183	3073	3385	4518	601	24709
2016	15052	851	484	2900	2499	1118	666	23570
2017	16136	1052	521	1591	2314	988	714	23316
2018	14462	1116	546	2449	2430	829	1633	23465
2019	8605	968	418	2583	3679	1419	723	18395
2020	7267	824	392	2414	4301	364	911	16473
2021	21153	839	816	2241	2929	1664	144	29786
2022	21684	1063	693	3275	2484	137	193	29529
2023	20257	282	439	3478	3307	42	21	27826
2024	25974	167	865	3758	1280	101	57	32202

Table 3. Annual albacore catch (mt) in the IATTC-WCPFC overlap area by year and CPC.

Year	CHN	JPN	KOR	PYF	TWN	VUT	Others	Total
1981	0	279	1449	0	1343	0	0	3071
1982	0	86	1992	0	2552	0	0	4630
1983	0	306	2208	0	1560	0	0	4074
1984	0	62	1235	0	1013	0	0	2310
1985	0	195	2906	0	814	0	0	3915
1986	0	254	1987	0	408	0	0	2649
1987	0	201	2247	0	1514	0	0	3962
1988	0	843	1785	0	2745	0	0	5373
1989	0	343	549	0	2448	0	0	3340
1990	0	243	364	0	2002	0	0	2609
1991	0	170	737	0	696	0	0	1603
1992	0	296	429	24	10562	0	0	11311
1993	0	518	240	34	4624	0	0	5416
1994	0	534	433	257	3370	0	31	4625
1995	0	218	772	261	618	0	0	1869
1996	0	122	463	553	1545	0	0	2683
1997	0	185	391	1376	2385	0	6	4343
1998	0	966	1588	2089	2271	0	2	6916
1999	0	531	545	574	2502	0	6	4158
2000	0	215	227	2630	1263	107	54	4496
2001	1229	321	256	3541	3547	112	1055	10061
2002	757	273	239	2545	2676	302	119	6911
2003	747	200	180	3232	5952	1386	316	12013
2004	118	172	491	1800	3964	857	140	7542
2005	217	133	63	1527	853	254	10	3057
2006	7	172	117	2387	979	1180	50	4892
2007	50	292	14	3049	566	754	72	4797
2008	120	15	6	2460	623	931	0	4155
2009	181	45	15	3147	355	1140	0	4883
2010	202	99	146	2754	1507	3131	0	7839
2011	1354	77	160	2596	1527	871	0	6585
2012	1657	156	96	2762	1281	1299	0	7251
2013	3242	95	243	2613	1487	360	4	8044
2014	4049	43	27	2415	1372	921	16	8843

Year	CHN	JPN	KOR	PYF	TWN	VUT	Others	Total
2015	4633	28	104	3073	2274	694	22	10828
2016	6629	21	164	2908	2104	349	27	12202
2017	5510	5	74	1623	1178	167	0	8557
2018	3207	21	191	2458	1573	467	1	7918
2019	4778	4	328	2584	1957	1260	0	10911
2020	2025	1	299	2417	3080	217	0	8039
2021	1622	7	167	2242	2436	1152	0	7626
2022	2249	10	232	3302	1566	84	0	7443
2023	2751	4	117	3485	2869	46	0	9272
2024	4876	15	526	3827	1571	129	0	10944

Table 4. Annual longline effort (1,000 hooks) in the south eastern Pacific Ocean by year and CPC.

Year	CHN	JPN	KOR	PYF	TWN	VUT	Total
1981	0	95122	13899	0	6166	0	115187
1982	0	71495	10183	0	8015	0	89693
1983	0	81957	9981	0	4690	0	96628
1984	0	83236	9581	0	3617	0	96434
1985	0	69324	17621	0	3016	0	89961
1986	0	122834	23378	0	4574	0	150786
1987	0	144800	21289	0	12049	0	178138
1988	0	140734	16548	0	9668	0	166950
1989	0	101715	8324	0	19591	0	129630
1990	0	123005	21713	0	12049	0	156767
1991	0	148681	45470	0	15920	0	210071
1992	0	142721	21690	197	32086	0	196694
1993	0	113297	22913	153	17729	0	154092
1994	0	120067	23955	1376	12925	0	158323
1995	0	88626	23115	1777	2665	0	116183
1996	0	75724	27325	2089	5593	0	110731
1997	0	67647	17657	3463	8597	0	97364
1998	0	75290	17766	4724	8684	0	106464
1999	0	49468	26921	5520	19717	0	101626
2000	0	52398	24381	8095	18830	0	103704
2001	7766	69576	31280	7445	27307	0	143374
2002	25336	71617	22095	943	60615	0	180606
2003	34697	71465	44713	11098	66335	0	228308
2004	11604	54482	31788	13754	44456	0	156084
2005	14630	42038	10905	13356	34286	0	115215
2006	0	37376	17053	11783	28781	0	94993
2007	11418	37875	6364	9669	16778	8898	91002
2008	11406	34467	1882	10248	9671	12615	80289
2009	9208	29670	7741	10682	12173	16050	85524
2010	8724	39531	12253	8976	19901	16598	105983
2011	28922	41199	13904	9514	17868	6403	117810
2012	37128	49854	11849	8806	18255	13492	139384
2013	56520	42684	22840	9847	16080	8979	156950
2014	73354	34286	11220	10571	15392	10773	155596

Year	CHN	JPN	KOR	PYF	TWN	VUT	Total
2015	80526	28162	12962	13661	13492	19282	168085
2016	61102	27098	16370	13677	17628	5389	141264
2017	67704	26113	19074	11641	20378	8762	153672
2018	65724	21910	10697	13258	18081	6553	136223
2019	50096	16827	11373	12620	30722	5107	126745
2020	49749	16925	17948	14253	40107	5057	144039
2021	81842	14526	17129	15748	26233	10865	166343
2022	71943	11803	14407	16449	28787	5952	149341
2023	30751	6880	3286	14636	25878	4420	85851
2024	72792	4821	16521	14716	14418	3607	126875

Table 5. Annual longline effort (1,000 hooks) in the eastern Pacific Ocean south of 10°S by year and CPC.

Year	CHN	JPN	KOR	PYF	TWN	VUT	Total
1981	0	39364	10198	0	5054	0	54616
1982	0	29484	7615	0	7936	0	45035
1983	0	47504	6280	0	4655	0	58439
1984	0	39086	6116	0	3617	0	48819
1985	0	29630	11029	0	3016	0	43675
1986	0	60480	8035	0	4574	0	73089
1987	0	61477	7684	0	11821	0	80982
1988	0	63186	6010	0	8949	0	78145
1989	0	39548	2535	0	12529	0	54612
1990	0	44575	4643	0	8638	0	57856
1991	0	57385	15758	0	12048	0	85191
1992	0	54424	8478	113	30657	0	93672
1993	0	41356	8654	103	17699	0	67812
1994	0	41924	2536	1251	12067	0	57778
1995	0	31068	7413	1647	2665	0	42793
1996	0	33780	8086	1965	5490	0	49321
1997	0	27738	3949	3447	8588	0	43722
1998	0	48001	8355	4720	8670	0	69746
1999	0	31445	6958	5350	18258	0	62011
2000	0	24885	3744	7693	15541	0	51863
2001	1237	39504	5087	7369	15421	0	68618
2002	6257	41570	5476	943	24158	0	78404
2003	12116	40595	11880	10997	37513	0	113101
2004	5204	30954	6889	13239	26645	0	82931
2005	9176	24520	3073	11164	17597	0	65530
2006	0	21997	7600	11385	14404	0	55386
2007	2261	23203	2371	9669	6104	7274	50882
2008	2243	16956	930	10248	5869	11184	47430
2009	1819	16782	3131	10655	7129	14546	54062
2010	3757	18811	6513	8976	11963	12845	62865
2011	10744	26894	7552	9514	12395	5314	72413
2012	16211	31857	6445	8795	8592	11298	83198
2013	33312	23310	14013	9845	10162	6367	97009
2014	55393	21374	6390	10537	8355	7873	109922

Year	CHN	JPN	KOR	PYF	TWN	VUT	Total
2015	45193	16246	6467	13659	6518	14243	102326
2016	47652	16677	11429	13573	10142	3791	103264
2017	48490	15642	10202	10340	9723	4493	98890
2018	38560	14161	4030	12749	4388	3205	77093
2019	27956	13772	6169	12260	21473	2573	84203
2020	41019	12339	8653	14111	26885	3017	106024
2021	78153	10557	9488	14640	19014	8573	140425
2022	67132	7980	6017	15311	14474	2682	113596
2023	29204	4057	792	14146	12978	1530	62707
2024	68069	2658	8079	13675	8067	2398	102946

Table 6. Annual longline effort (1,000 hooks) in the IATTC-WCPFC overlap area by year and CPC.

Year	CHN	JPN	KOR	PYF	TWN	VUT	Total
1981	0	10907	10372	0	3180	0	24459
1982	0	5530	7896	0	5669	0	19095
1983	0	6571	7636	0	3579	0	17786
1984	0	13340	6578	0	2507	0	22425
1985	0	10726	14097	0	1582	0	26405
1986	0	14223	13427	0	1064	0	28714
1987	0	8944	14339	0	2832	0	26115
1988	0	33443	14316	0	5645	0	53404
1989	0	24585	5221	0	8608	0	38414
1990	0	12090	8889	0	7683	0	28662
1991	0	10961	18302	0	5415	0	34678
1992	0	13976	10933	197	25658	0	50764
1993	0	14988	7174	153	12250	0	34565
1994	0	14871	10998	1376	10097	0	37342
1995	0	8672	14324	1775	1206	0	25977
1996	0	7077	11840	2089	3148	0	24154
1997	0	4872	7285	3462	4488	0	20107
1998	0	12863	12007	4724	4873	0	34467
1999	0	8702	18232	5520	11647	0	44101
2000	0	9382	12020	8071	8231	0	37704
2001	4156	7201	12242	7442	14126	0	45167
2002	10189	7580	7231	943	20827	0	46770
2003	19959	6886	17789	11089	30167	0	85890
2004	3126	8315	13380	13740	21039	0	59600
2005	5832	5348	2856	13146	14848	0	42030
2006	0	5481	5338	11783	11013	0	33615
2007	8092	5974	1107	9669	8925	3848	37615
2008	8345	3405	609	10248	4564	3944	31115
2009	4564	3349	868	10682	3290	4256	27009
2010	5926	5053	3238	8976	12395	10797	46385
2011	22438	4350	5283	9514	9046	2894	53525
2012	21059	6545	4177	8806	6913	4424	51924
2013	24395	5246	7446	9845	10879	3202	61013
2014	25025	2328	1488	10571	10766	2991	53169

Year	CHN	JPN	KOR	PYF	TWN	VUT	Total
2015	28150	1075	1064	13661	9215	4483	57648
2016	29244	854	2530	13677	11232	1480	59017
2017	28477	733	3527	11641	10892	2069	57339
2018	24039	1586	3247	13258	8482	2382	52994
2019	25166	120	3881	12620	19172	3821	64780
2020	13909	50	5558	14253	25385	2065	61220
2021	10914	208	5101	15748	20319	6246	58536
2022	10789	278	4270	16449	16951	2717	51454
2023	4454	178	1041	14636	18564	2809	41682
2024	14671	283	5506	14716	12010	2681	49867

Figure 1. Annual albacore catch (mt) in the IATTC-WCPFC overlap area (top panel), south of the equator (middle panel), and south of 10°S (bottom panel) in the eastern Pacific Ocean by year and CPC.

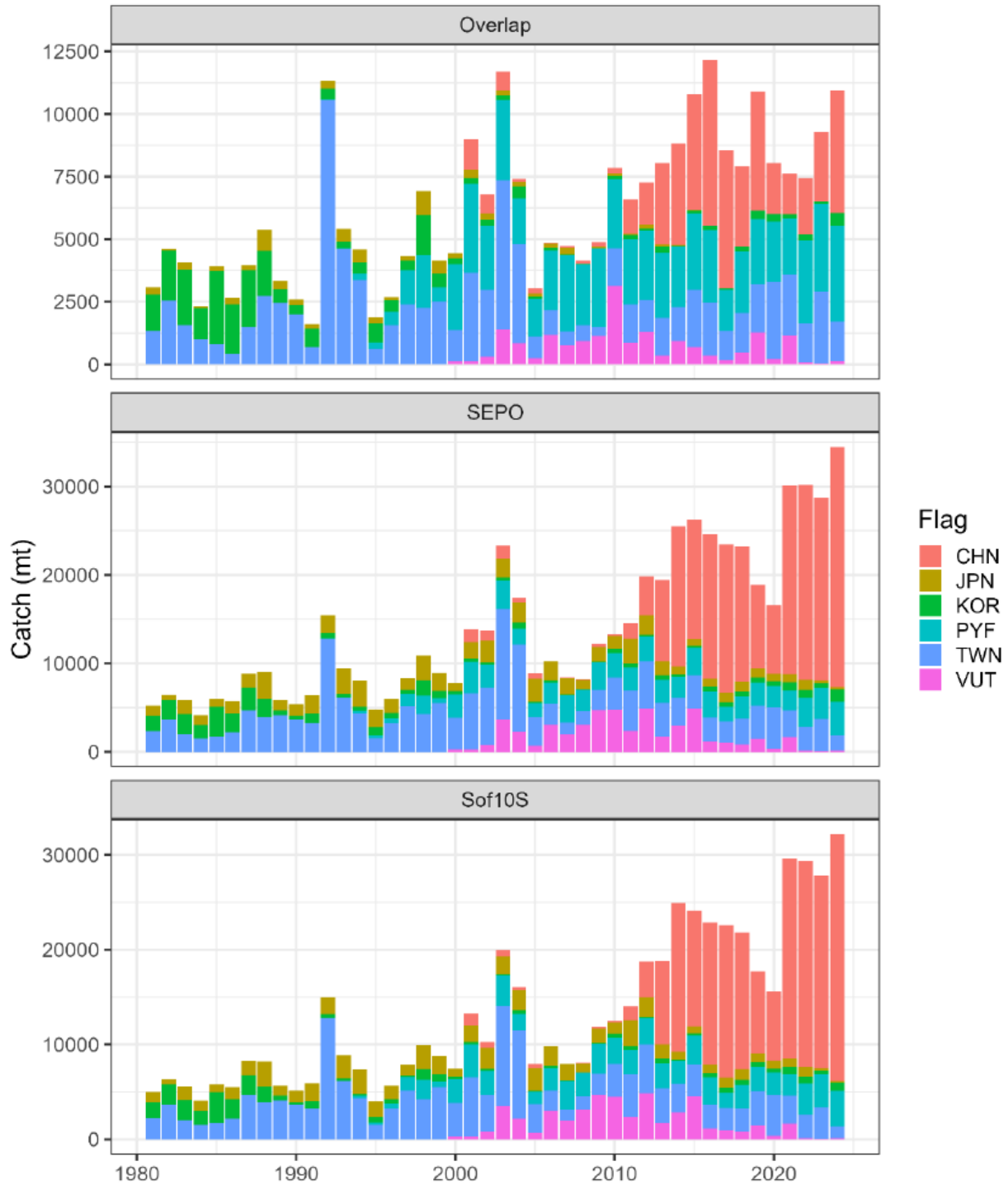


Figure 2. Annual longline effort (1,000 hooks) in the IATTC-WCPFC overlap area (top panel), south of the equator (middle panel), and south of 10°S (bottom panel) in the eastern Pacific Ocean by year and CPC.

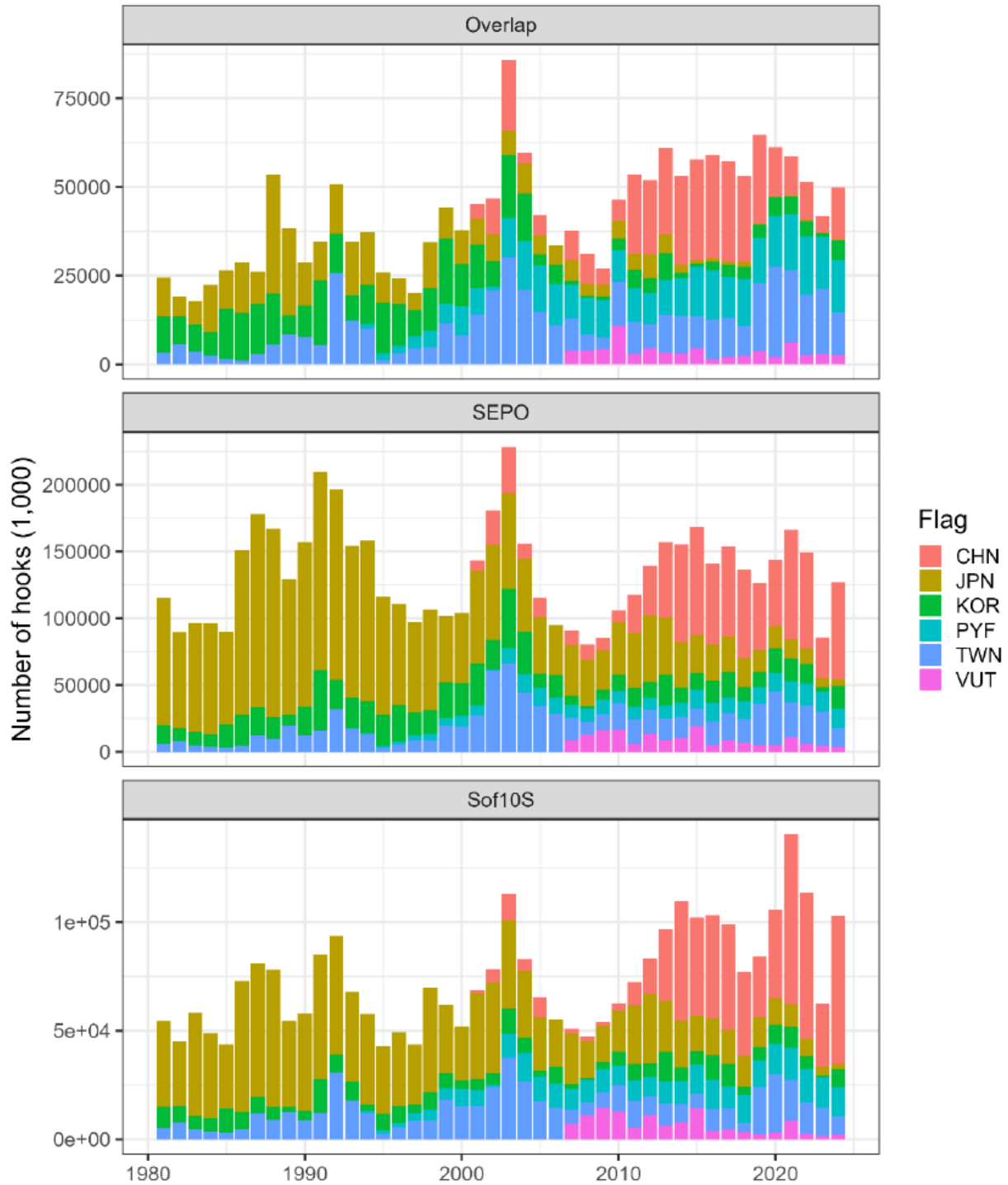


Figure 3. Spatial distribution of average albacore catch by CPC during the most recent decade (2015-2024).

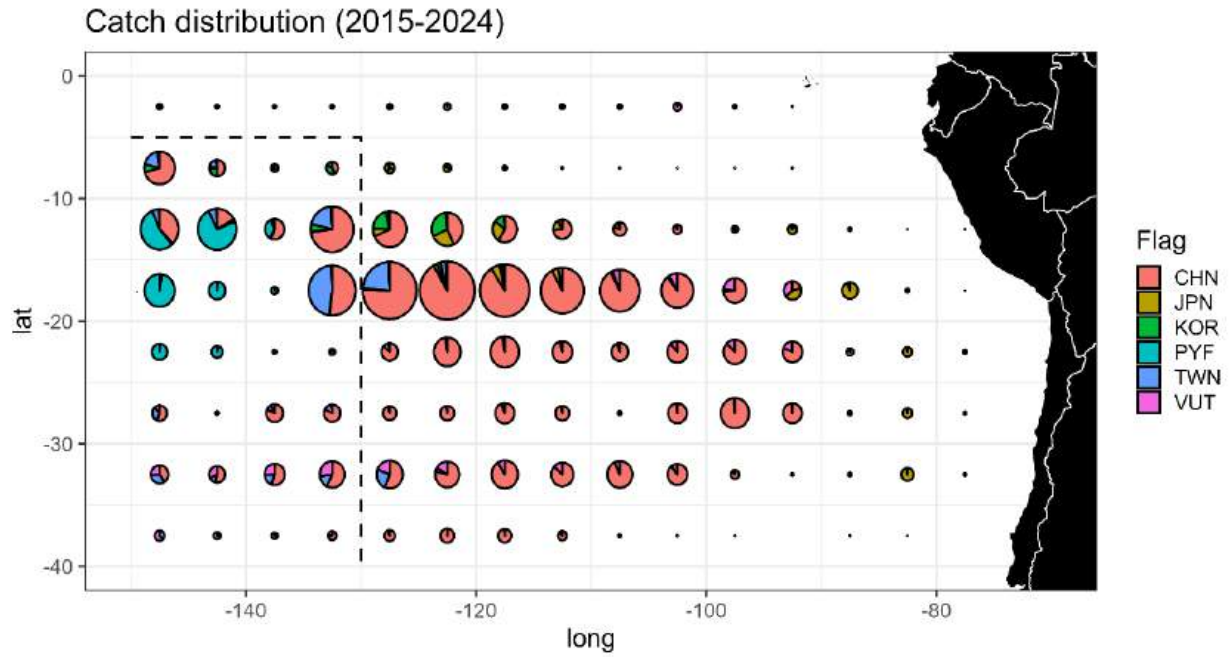


Figure 4. Spatial distribution of longline fishing effort by CPC during the most recent decade (2015-2024).

