

Comisión Interamericana del Atún Tropical  
Inter-American Tropical Tuna Commission



## Longline size data

1st External review of data used in stock assessments of tropical tuna in the eastern Pacific Ocean

Oct 2-6 2023

# Outline

- Type of longline data
- Catch and effort data
- Computation of total catch for the assessments
- Improvement of longline data

# Types of longline size data

- 1) size (length and/or weight) data with spatial and temporal information aggregated at different scales,
- 2) observer data with spatial and information at fine scale resolution ('operational level data').
- 3) Data sets are available for special projects with national scientists using other instruments such as Memorandums of Understanding.

# Size data by spatial resolution

Number of observations

		JPN	KOR	PYF	TWN	VUT
279	15N-15S	0%	0%	0%	0%	62%
504702	FIVETEN	93%	0%	0%	0%	0%
18237	NS15N	0%	0%	0%	100%	16%
101	NS15S	0%	0%	0%	0%	22%
93843	ONEONE	1%	100%	100%	0%	0%
28975	TENTWENTY	5%	0%	0%	0%	0%
		540570	74051	12899	18164	453

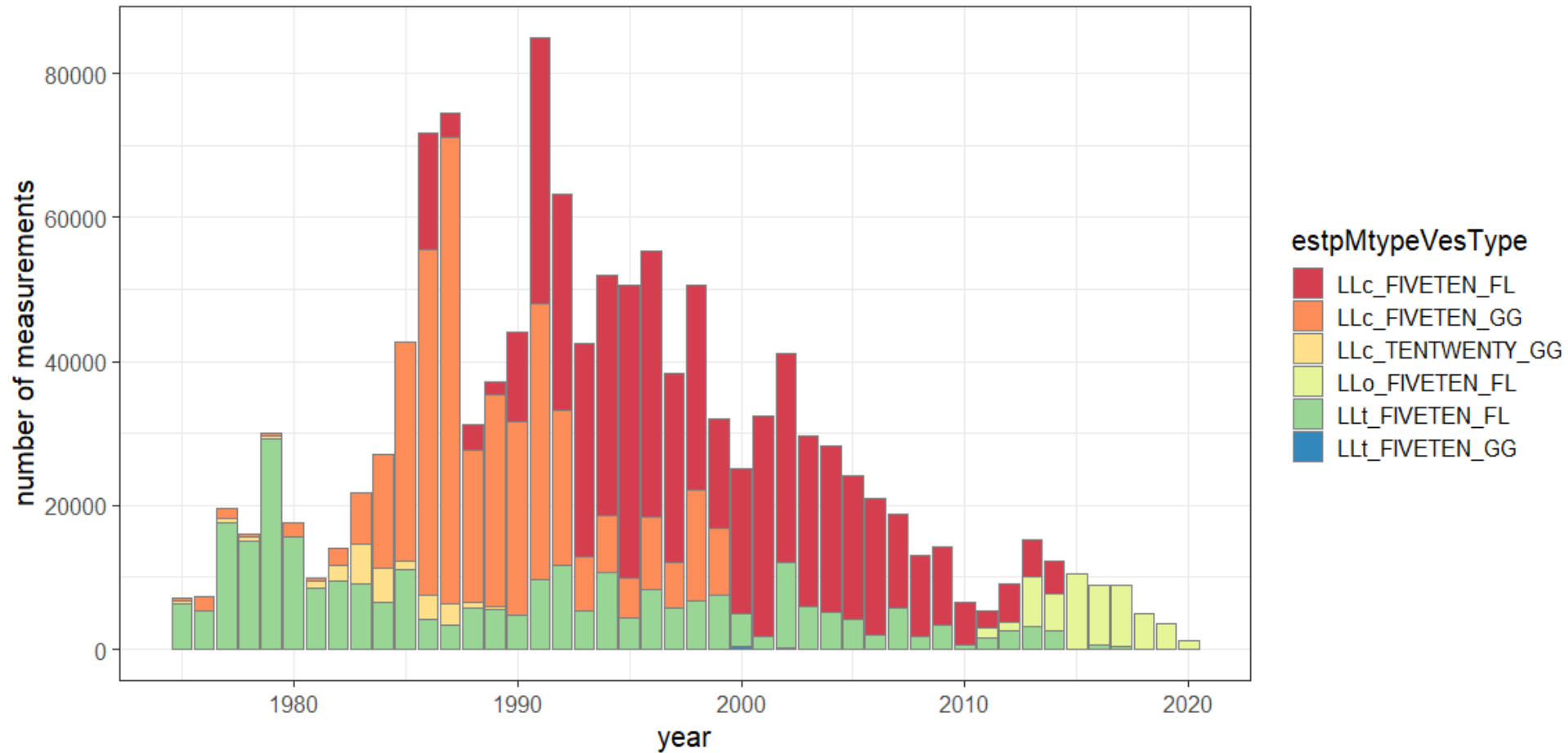
# Size data by type of measurement

Number of observations

		JPN	KOR	PYF	TWN	VUT
445266	FL	64%	100%	100%	63%	100%
194554	GG	36%	0%	0%	0%	0%
6656	RW	0%	0%	0%	37%	0%
25	TL	0%	0%	0%	0%	0%
		540934	74051	12899	18164	453

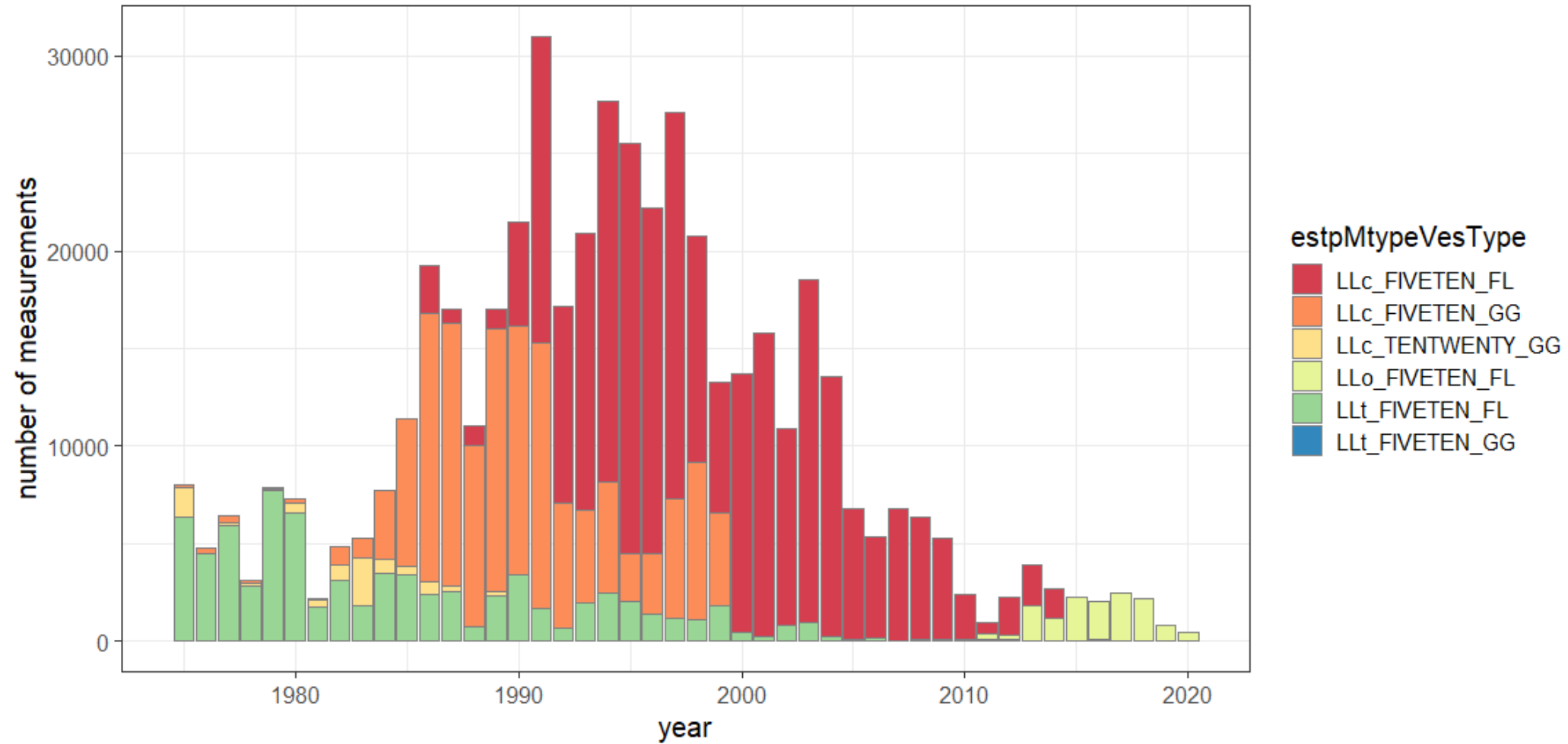
# JPN data

BET: size data in the EPO from JPN

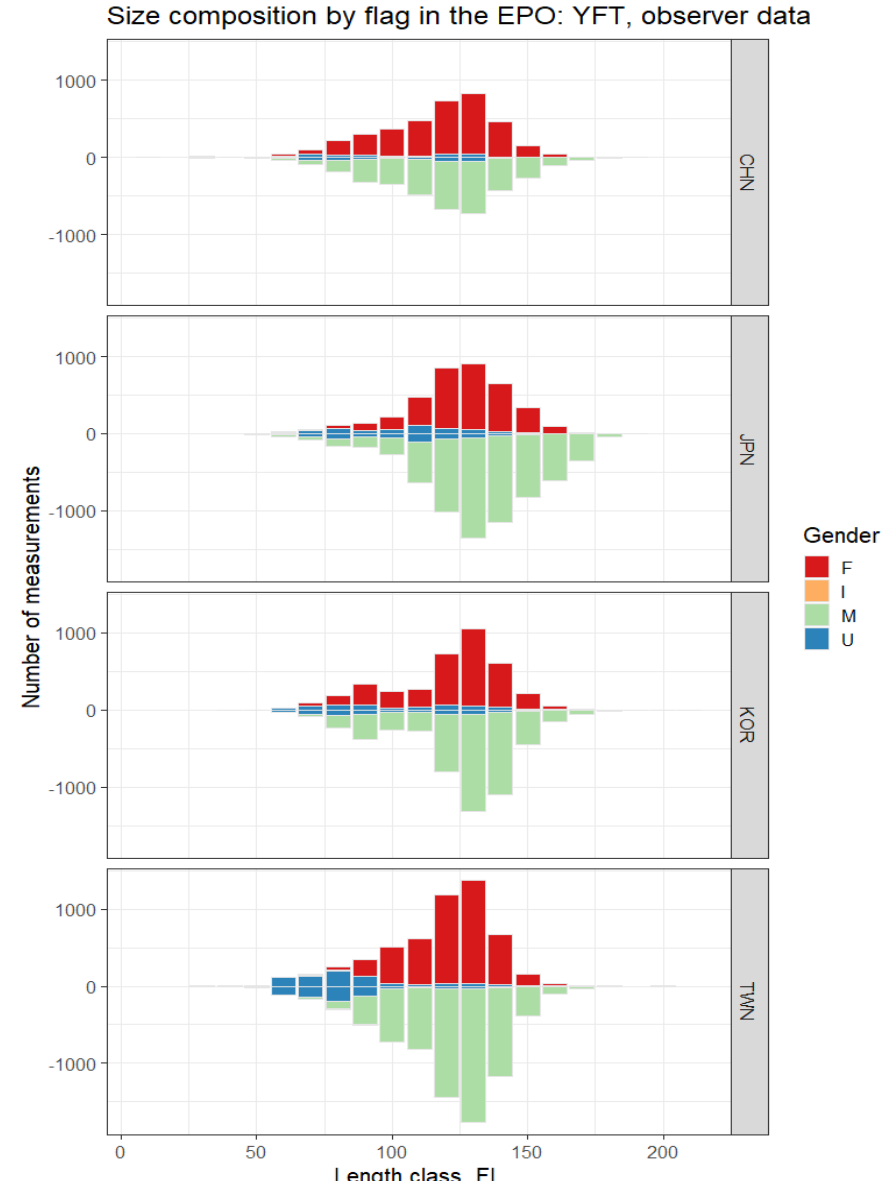
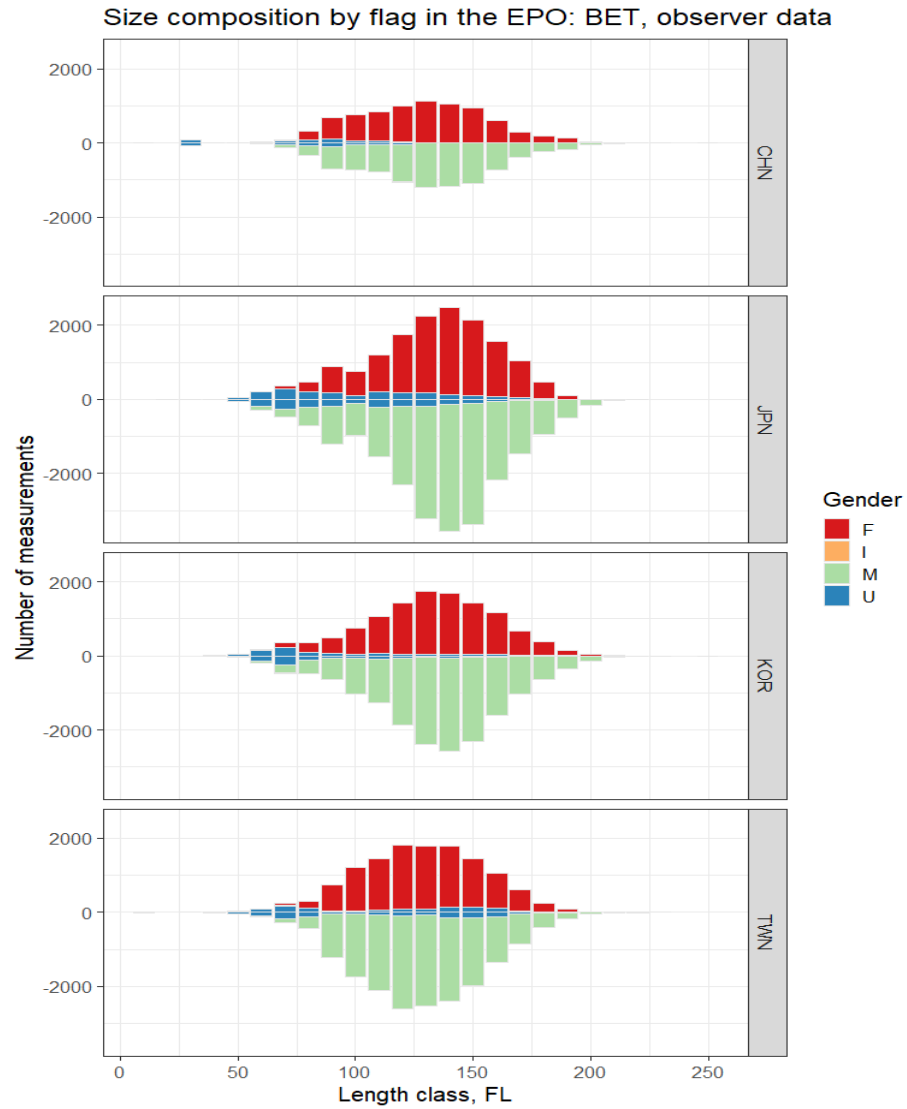


# JPN data

YFT: size data in the EPO from JPN



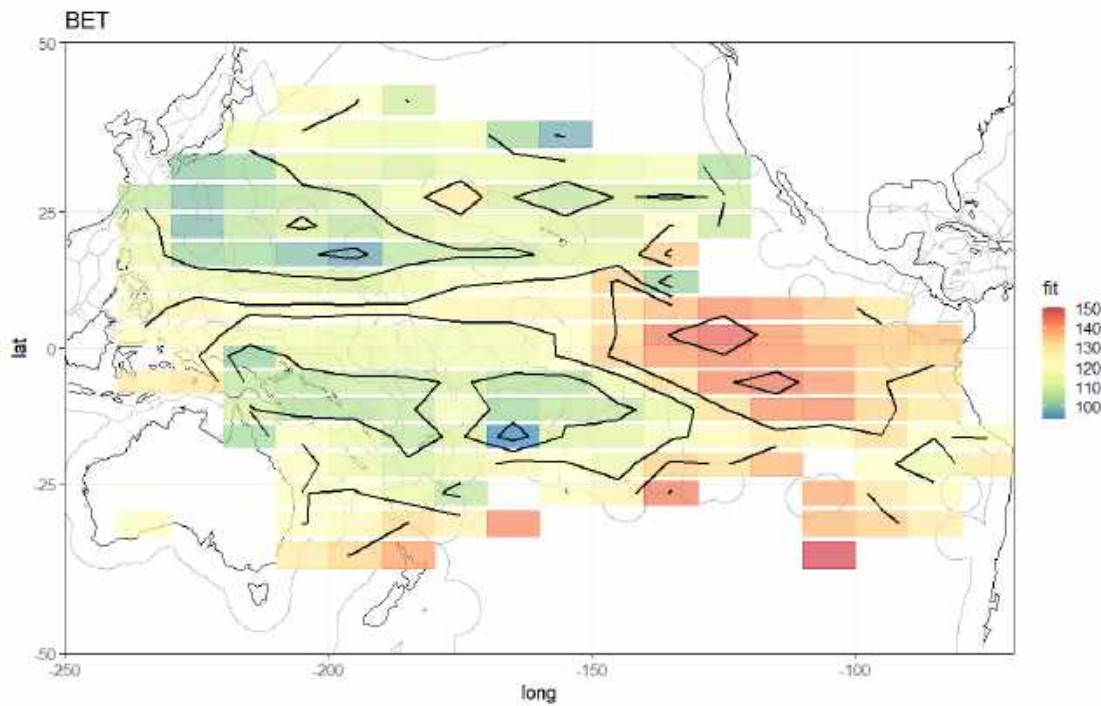
# Observer data





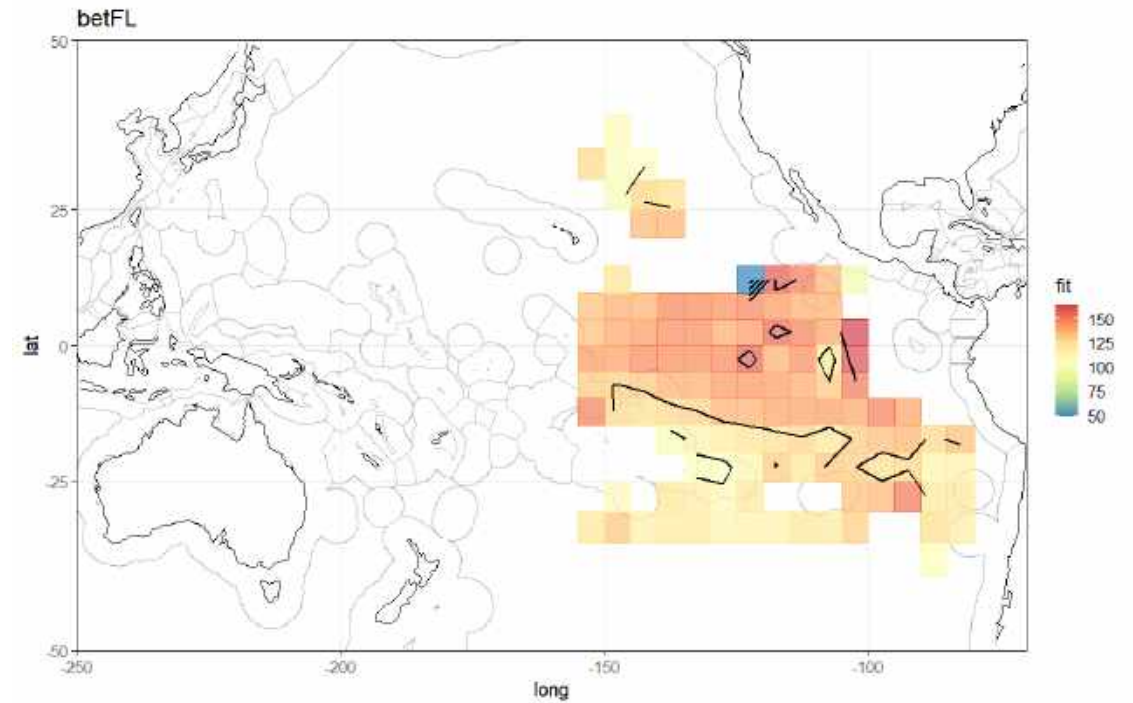
# Large scale size patterns

Hoyle et al in prep  
Longline data held by SPC



Prediction year 2000, quarter 3

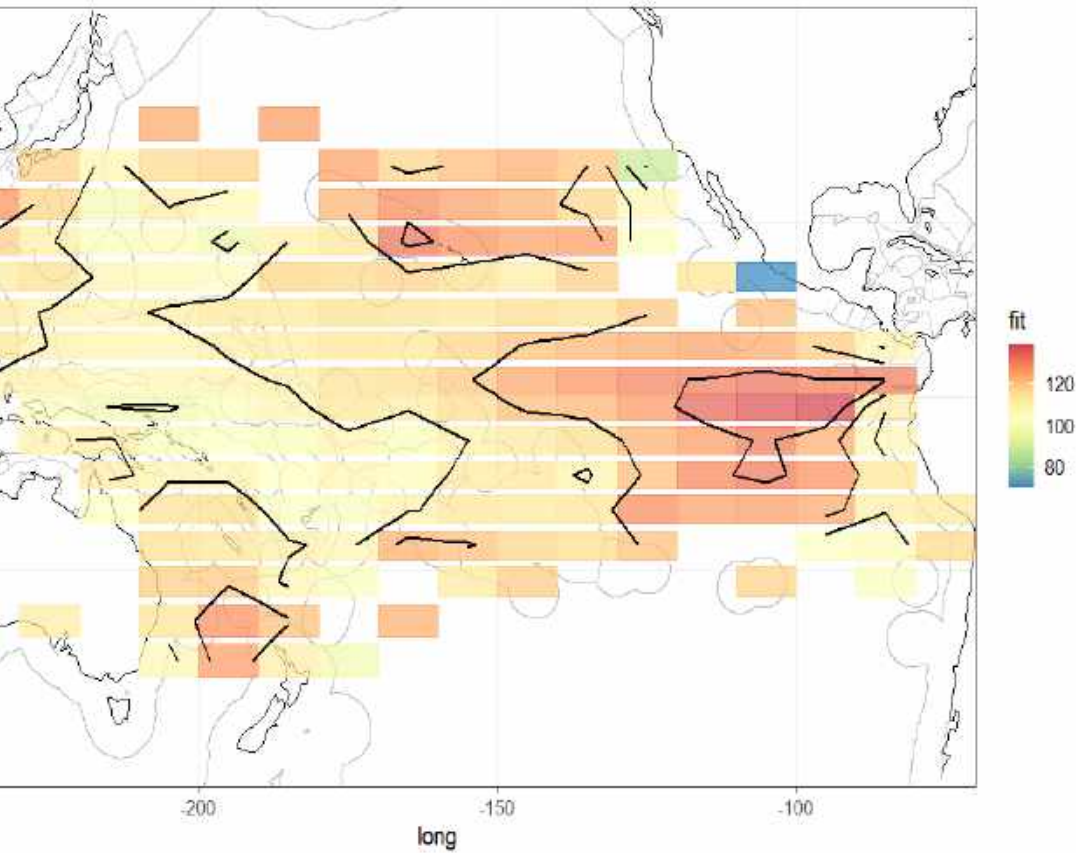
Longline observer data held by IATTC



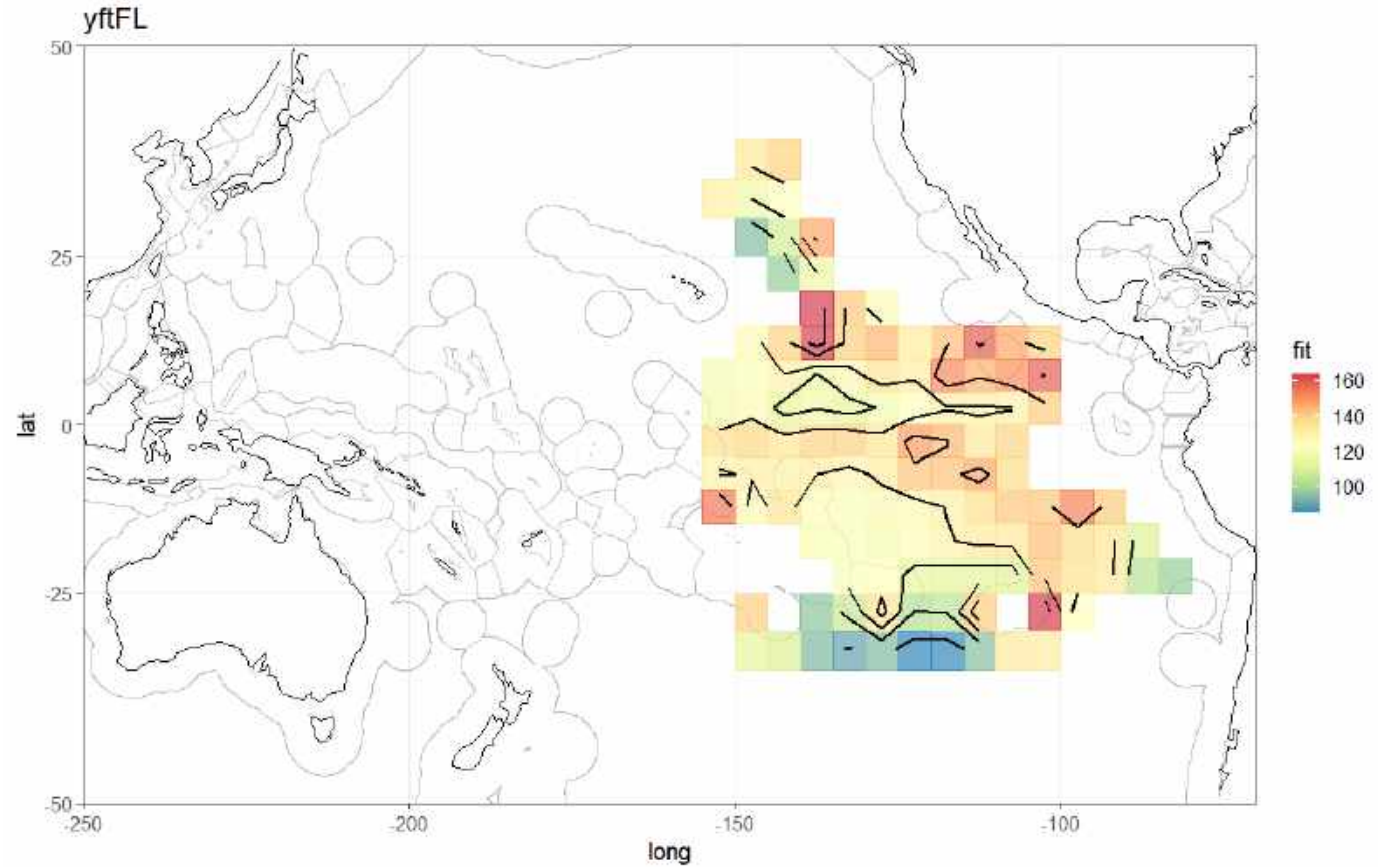
Prediction year 2018, quarter 3

# YFT: Large scale size patterns

Hoyle et al in prep (1984- 2010)



Longline observers (2013-2019)



Prediction year 2000, quarter 3

Prediction year 2018, quarter 3