

**INTER-AMERICAN TROPICAL TUNA COMMISSION**  
**WORKSHOP ON IMPLEMENTATION OF AN ELECTRONIC MONITORING SYSTEM**  
**(EMS)**  
**1<sup>ST</sup> MEETING**  
*(by videoconference)*  
22-23 April 2021

**DOCUMENT EMS-01-02 REVISED**  
**A PROPOSED WORKPLAN FOR THE IMPLEMENTATION OF AN ELECTRONIC**  
**MONITORING SYSTEM FOR THE TUNA FISHERIES IN THE EASTERN PACIFIC**  
**OCEAN**

**CONTENTS**

1. Introduction and background ..... 1  
2. Proposed workplan ..... 1

**1. INTRODUCTION AND BACKGROUND**

As a result of the Recommendation [3.1](#) of the 10th meeting of the Scientific Advisory Committee (SAC) in 2019, and per paragraphs 9 and 10 of Resolution [C-19-08](#), which instructed the IATTC staff to draft minimum standards for electronic monitoring (EM), the staff presented the document “*An electronic monitoring system for the tuna fisheries in the eastern Pacific Ocean: Objectives and Standards*” ([SAC-11-10](#)) at SAC-11 in October 2020. Document SAC-11-10 contains background information on the different components of an Electronic Monitoring System (EMS) to be implemented in the eastern Pacific Ocean (EPO), the staff’s assessment of the potential of EMS in the region, and provides a comprehensive evaluation of the minimum standards for the various components of an EMS, as well as considerations for actions that will be required to implement an EMS for tuna fisheries in the region. Based on the material presented in Document SAC-11-10, recommendations for minimum standards and actions to be taken to successfully implement an EMS in the EPO are presented in the document [EMS-01-01](#). The present document presents the staff’s proposed workplan, which outlines the timeline and steps that will need to be taken by the Commission, the staff, and other stakeholders to successfully implement an EMS for the tuna fisheries in the EPO.

**2. PROPOSED WORKPLAN**

Figure 1 presents a flowchart of the workplan for implementation of an EMS for the tuna fisheries of the EPO by January 2025, or on a date agreed upon by the Commission on the basis of the conclusions and recommendations of the EMS workshops as described in the present workplan, as well as the discussion and decisions of the Commission during its intervening meetings. To achieve this goal, there are four main steps to be completed, each one related to one of the four main components of the EMS: definitions, institutional structure, management guidelines, and standards (dark blue boxes of Figure 1) (see Annex 1 for the components and subcomponents of the proposed EMS framework). The recommendations

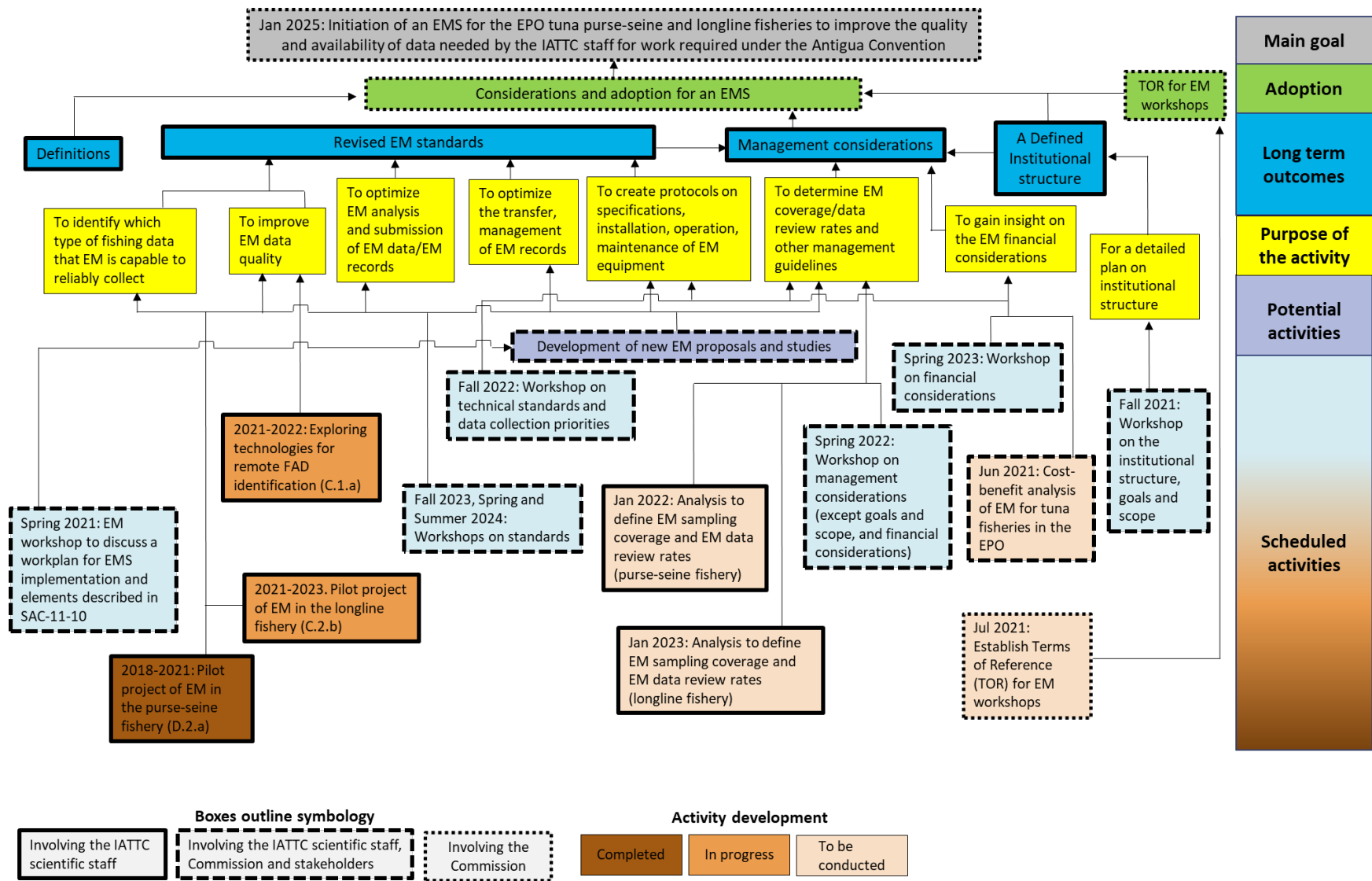
associated with each of these steps, as well as the outcomes of actions associated with each step, will be presented to the Commission for consideration and adoption (green box of figure 1). Over the course of the next four years (2021-2024), a series of topics, which are key to the implementation of an EMS, will be discussed in two workshops per year (spring and fall, to be held at the time of the SAC and the Meeting of the Parties to the AIDCP, respectively), and the results presented at the Annual Meeting of the Commission for its consideration. Besides these workshops (light blue boxes of Figure 1), the staff considers that additional activities such as research projects and focused analyses will be necessary to effectively implement some key components of the EMS. These additional activities are depicted by brown boxes in Figure 1, where the shade of brown indicates the current status of the activity (completed, in progress, to be conducted). The margin type of workshop and other activity boxes in Figure 1 indicates the anticipated participants: i) solid line, involving the IATTC staff; ii) dashed line, involving the IATTC staff, the Commission, and stakeholders with significant experience on EM; and iii) dotted line, involving the Commission. The purpose for conducting these specific activities is also presented (yellow boxes). Finally, it is likely that during the EMS implementation process, additional proposals or studies may need to be considered. These potential activities are indicated by a purple box in Figure 1 and Table 1.

The topics and elements to be discussed at each workshop follow a hierarchical order of priority. As such, it is recommended that management, structural and programmatic issues be discussed and agreed upon early in the implementation process. The aspects related to financial considerations, data collection priorities, technical standards, and EM coverage and review rates, should follow. Finally, it is recommended that the implementation process conclude with the discussion and adoption of the remaining standards (e.g. data collection, analysis and reporting, logistics).

The EMS Definitions proposed by the staff are presented in Annex 1 of Document [EMS-01-01](#), and it is recommended that these definitions, in their entirety, be adopted at least on a provisional basis by the SAC at its 12<sup>th</sup> meeting and by the Commission during its 2021 Annual meeting.

As also mentioned in document [EMS-01-01](#), the staff notes that Terms of Reference (TOR) for the proposed workshops and other activities related to the EMS implementation process are currently lacking and need to be developed and adopted. It is recommended that the Commission, on the basis of a draft prepared by the staff in consultation with members and other stakeholders, develop and adopt TOR to guide EMS implementation activities at its regular annual meeting in 2021. The TOR will serve to provide structure for the various steps of the EMS implementation process, including workshops and other elements, as needed, similar to the function of the TOR put in place for the Management Strategy Evaluation workshops established by the Commission in 2019 through Resolution [C-19-07](#).

Finally, [Table 1](#) presents a chronogram for the proposed activities outlined in the workplan.



**Figura 1.** Un plan de trabajo propuesto para la implementación de un SME para las pesquerías atuneras en el OPO.

**Table 1.** Timetable of activities in the proposed workplan.

**Tabla 1.** Calendario de actividades del plan de trabajo propuesto.

2021														
Semester 1							Semester 2							
Month 1	2	3	4				5	6	7	8	9	10	11	12
Jan 1, 2021. Cont. Pilot project of EM in the purse-seine fishery (D.2.a).														
Feb. Pilot project of EM in the longline fishery (C.2.b).														
Mar. Exploring technologies for remote FAD identification (C.1.a).														
							Jun: Cost-benefit analysis of EM for tuna fisheries in the EPO.							
			Spring. EM workshop to discuss a work plan for EMS implementation and elements described in SAC-11-10.							Annual meeting. Presentation and adoption of the workplan. Establish the Terms of Reference for EM workshops.		Fall. Workshop on the institutional structure and EMS objectives and scope.		
Development of new EM proposals and studies														
2022														
Semester 3							Semester 4							
Month 13	14	15	16		17	18	19			20	21	22	23	24
Jan 1, 2022. Cont. Pilot project of EM in the longline fishery (C.2.b).														
Jan. Cont. Exploring technologies for remote FAD identification (C.1.a).														
Jan. Analysis to define EM sampling coverage and EM data review rates (purse-seine fishery). <i>(subject to/pending decisions on EMS objectives)</i>														
			Spring. Workshop on management considerations (except Goals and scope, and financial considerations)				Jul/Aug, Annual meeting. Presentation and adoption on the institutional structure, other management considerations. Goals and scope of the EMS (part of Management considerations) established by the Commission			Fall. Workshop on technical standards and data collection priorities.				

Development of new EM proposals and studies											
2023											
Semester 5						Semester 6					
Month 25	26	27	28	29	30	31	32	33	34	35	36
<b>Jan 1, 2023.</b> Cont. Pilot project of EM in the longline fishery (C.2.b).											
Jan. Analysis to define EM sampling coverage and EM data review rates (longline fishery). <i>(subject to/pending decisions on EMS objectives)</i>											
						Spring. Workshop on financial considerations		Jul/Aug, annual meeting. Presentation and adoption of the technical standards, data collection priorities and financial considerations.	Fall. Workshop on standards (1)		
Development of new EM proposals and studies											
2024											
Semester 7						Semester 8					
Month 37	38	39	40	41	42	43	44	45	46	47	48
			Spring. Workshop on standards (2)		Jun. Workshop on standards (3) *if necessary	Jul/Aug, Annual meeting. Presentation and adoption of the revised EMS Standards.					
								Aug/Sep. Final consideration and adoption by the Commission of the whole set of EMS components for the purse-seine and longline fishery on the basis of the conclusions and recommendations of the EMS workshops as well as the discussion and decisions of the Commission during its intervening meetings as described in the workplan and in this timetable.  The EM equipment should be installed and the EMS operative before Jan 1, 2025, or on a date to be agreed upon by the Commission based on the conclusions and recommendations of the EM workshops described in the workplan and in this timetable.			

Development of new EM proposals and studies											
2025											
Semester 9						Semester 10					
Month 49	50	51	52	53	54	55	56	57	58	59	60
Jan 1, 2025, or on a date agreed upon by the Commission, initiation of an EMS for the tuna fisheries in the EPO											
Development of new EM proposals and studies											

**Annex 1.** Schematic diagram on the structure of the EMS (taken from EMS-01-01).

