

Current F (fully recruited) level

- High F
 - Average of ages 7 to 9+ in 2003
- Low F
 - Average of ages 4 to 9+ in 2003
- Reason for alternatives
 - Need to recognize uncertainty
 - Uncertainty about age of full recruitment
 - A previous assessment showed full recruitment at age 4

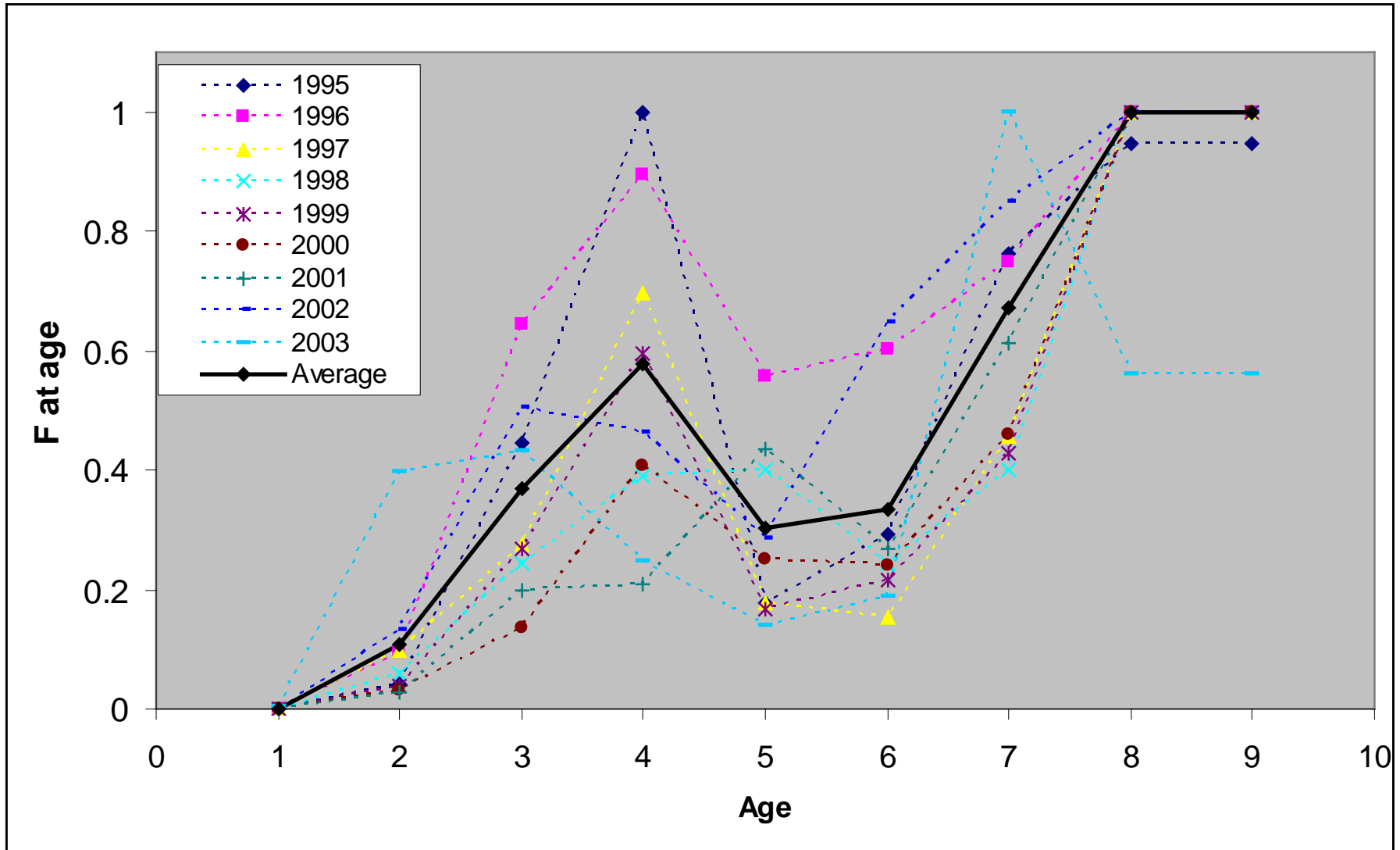
Forward projection and MSY calculation

- In forward projections & MSY calcs

$$F_a = F_{\text{(hi or lo) fully recruited}} * PR_a$$

- Partial recruitment at age (PR_a) was calculated from mean (normalized to max value) of 1975 to 2003.

Partial recruitment at age



High & low F vs estimated F

