

# Most Recent CPUE from the Japanese LL Fishery in the ETP

## Background information to the IATTC's stock assessment

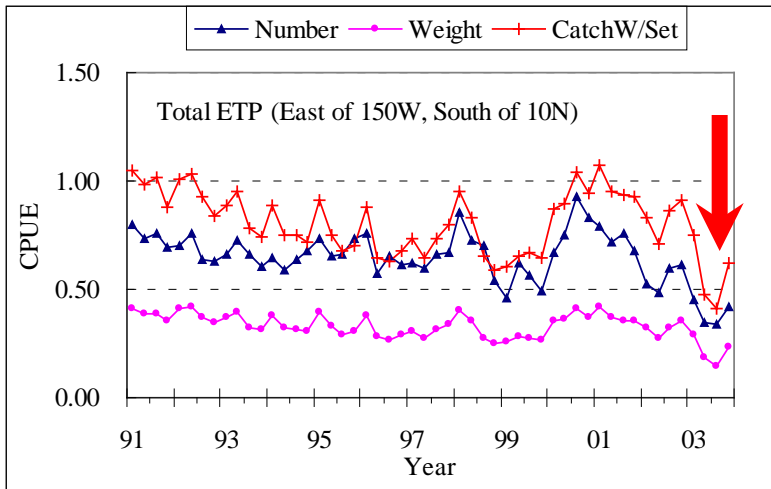
May 2, 2005

National Research Institute of Far Seas Fisheries

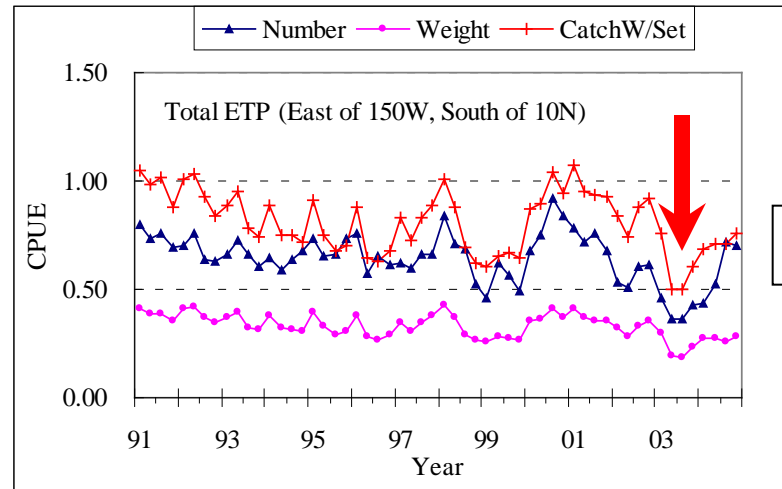
# Nominal CPUE by area for 1991-2004

number/100 and weight/1000 hooks & catch (ton)/set

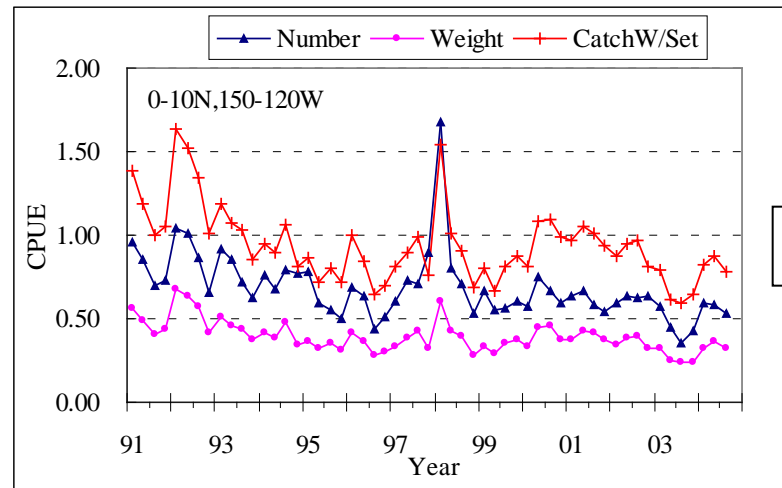
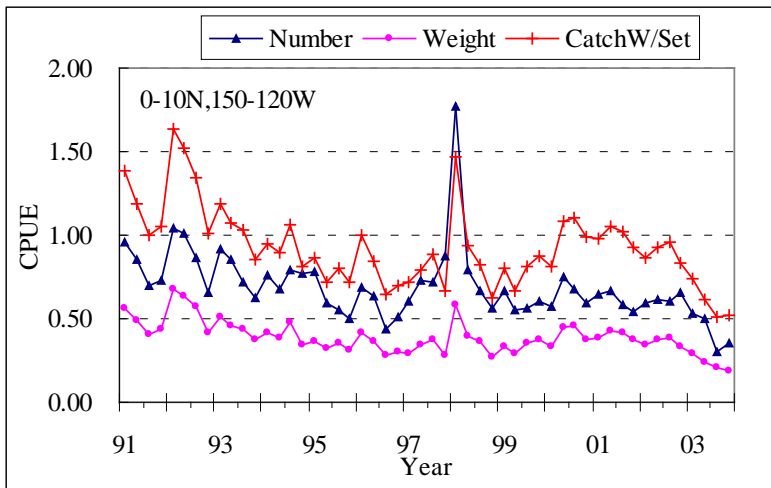
As of May 2004



As of May 2005



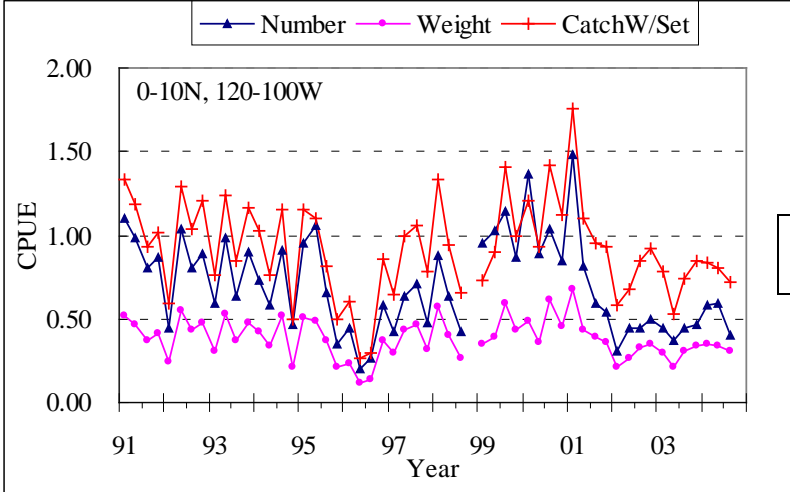
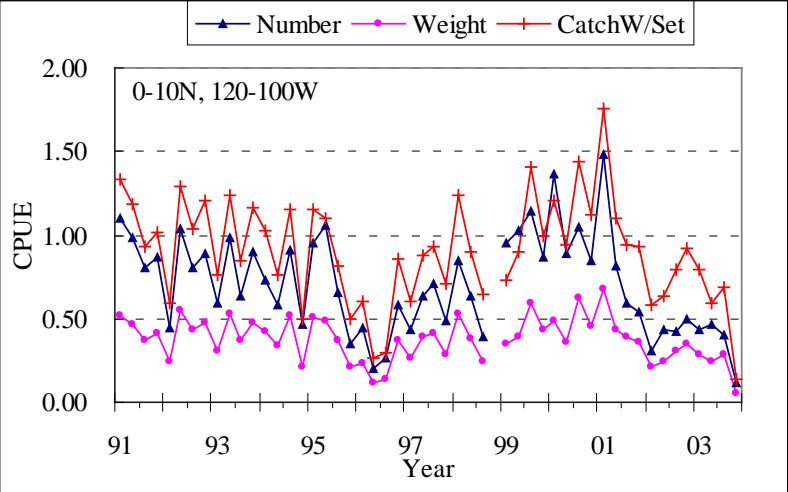
Total



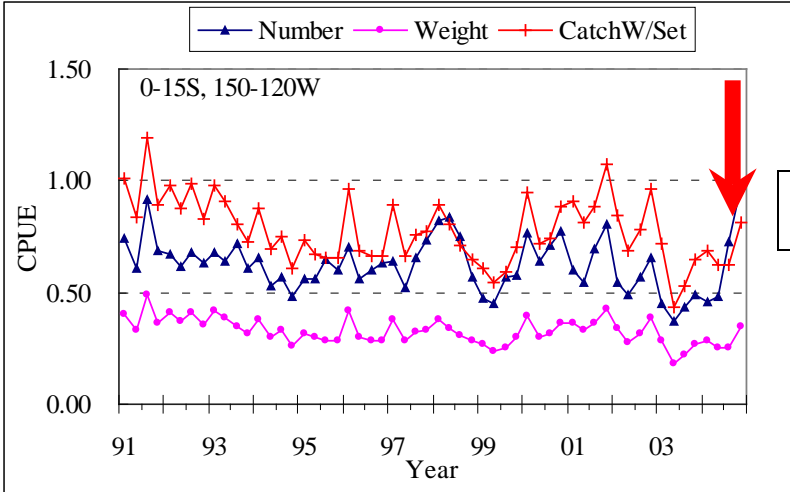
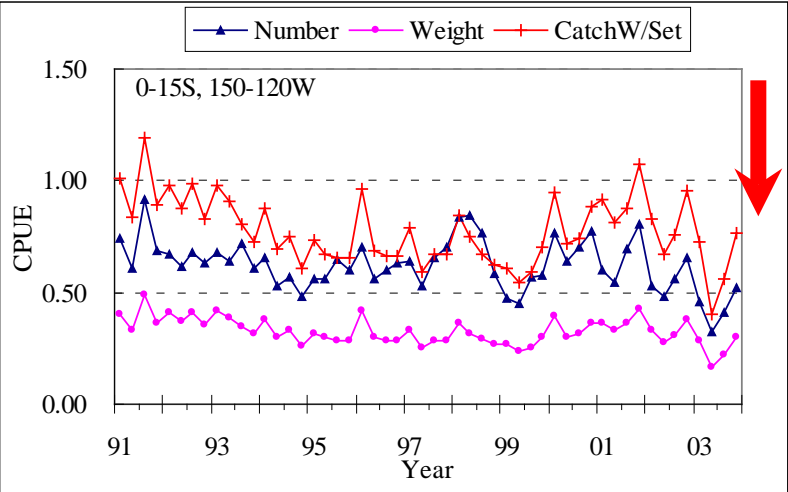
NW

# Nominal CPUE by area for 1991-2004

number/100 and weight/1000 hooks & catch (ton)/set



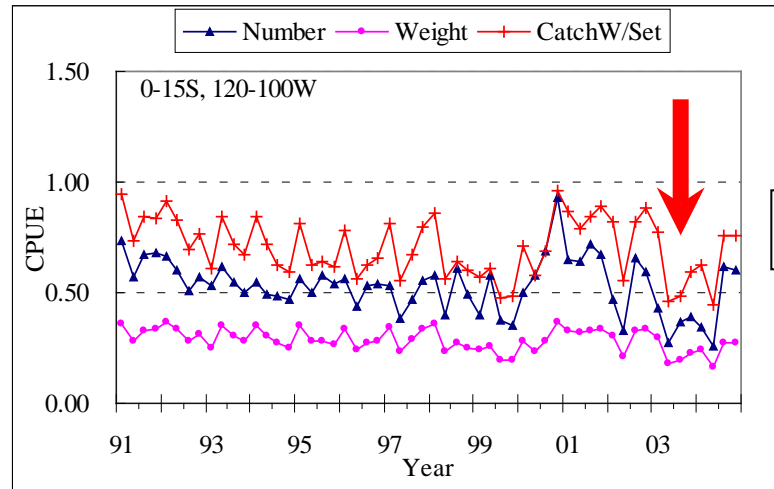
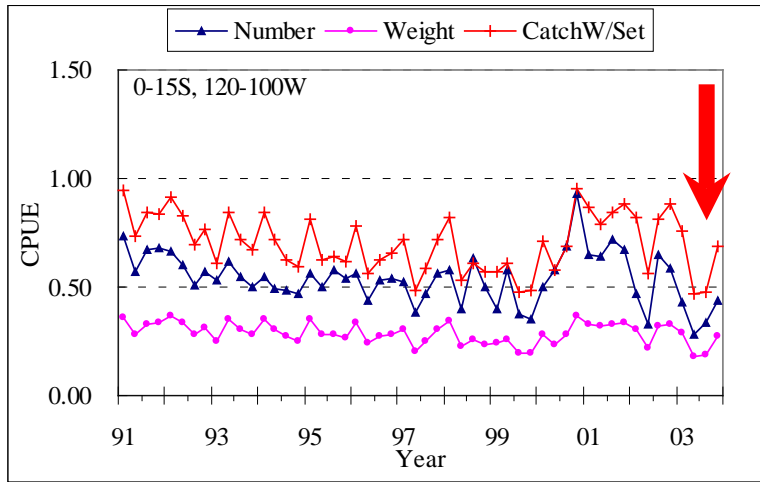
NE



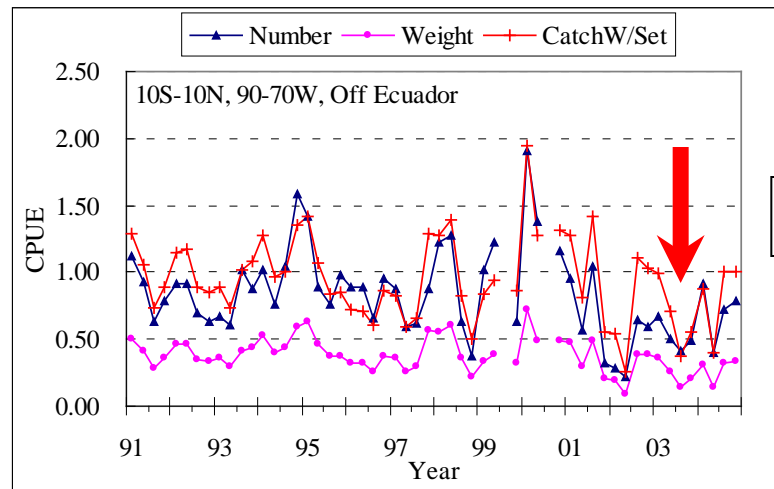
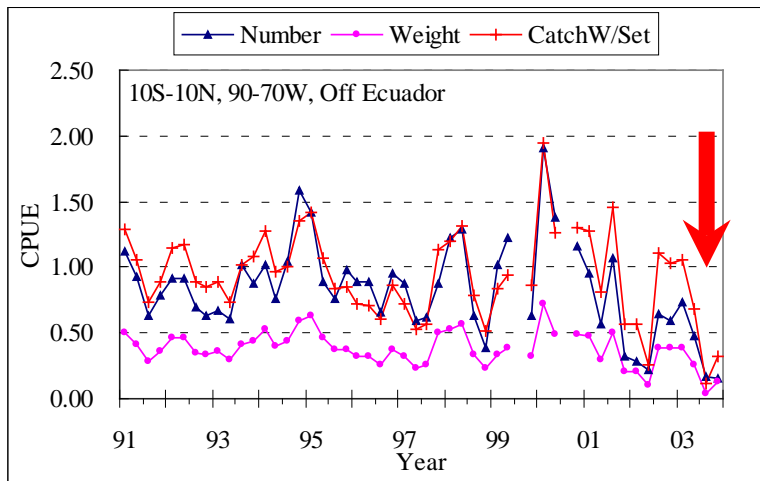
SW

# Nominal CPUE by area for 1991-2004

number/100 and weight/1000 hooks & catch (ton)/set



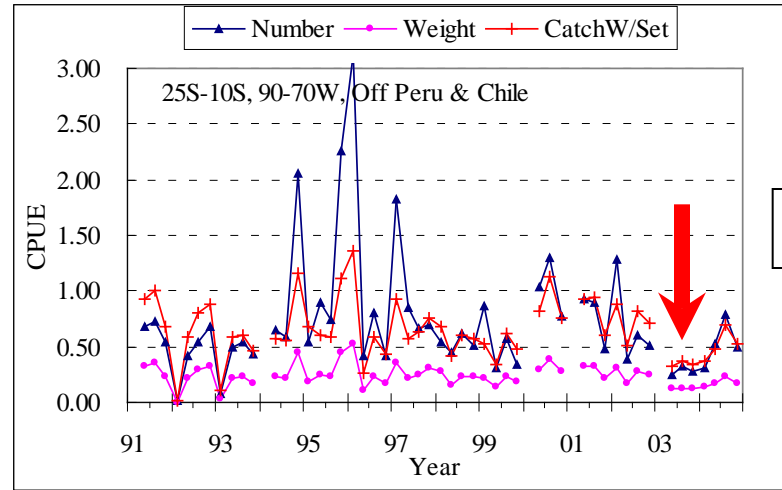
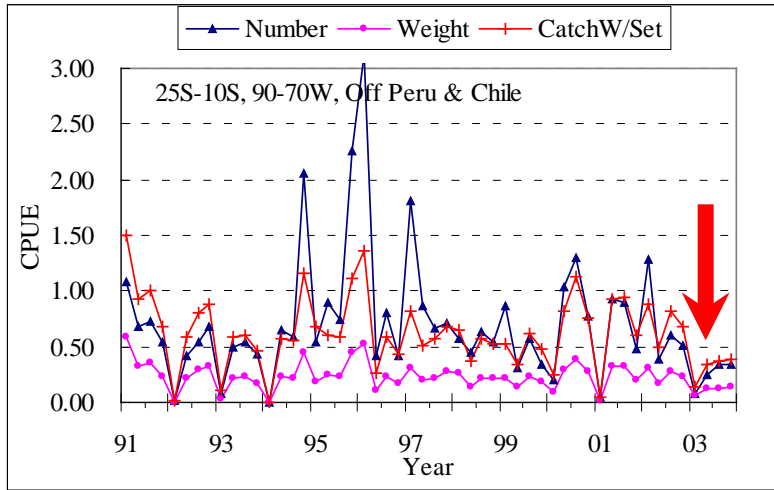
SE



ECU

# Nominal CPUE by area for 1991-2004

number/100 and weight/1000 hooks & catch (ton)/set



PER

## Summary of CPUE Information from the Japanese Longline Fishery

- CPUE in the 4<sup>th</sup> quarter of 2004 is not reliable.

CPUE in 2004 recovered to nearly the average level in 1990s in all areas, especially in SW and SE (between 100-150W, 0-15S). However, CPUE in weight indicated less recovery.

-----> Recruitment of small-sized fish occurred.

CPUE in NW, NE, ECU and PER stayed lower than average.