

Comisión Interamericana del Atún Tropical
Inter-American Tropical Tuna Commission



LAS PESQUERÍAS Y POBLACIONES EN 2016
THE FISHERIES AND STOCKS IN 2016

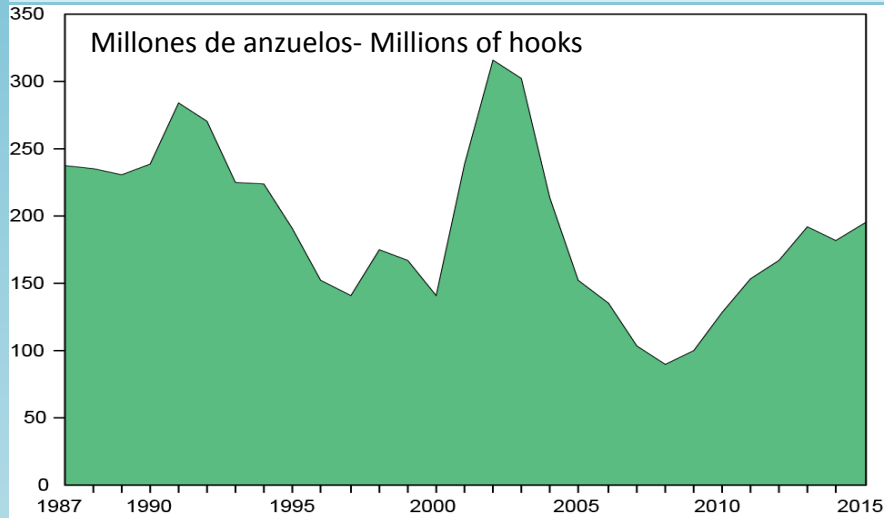


92ª Reunión de la CIAT
92nd Meeting of the IATTC

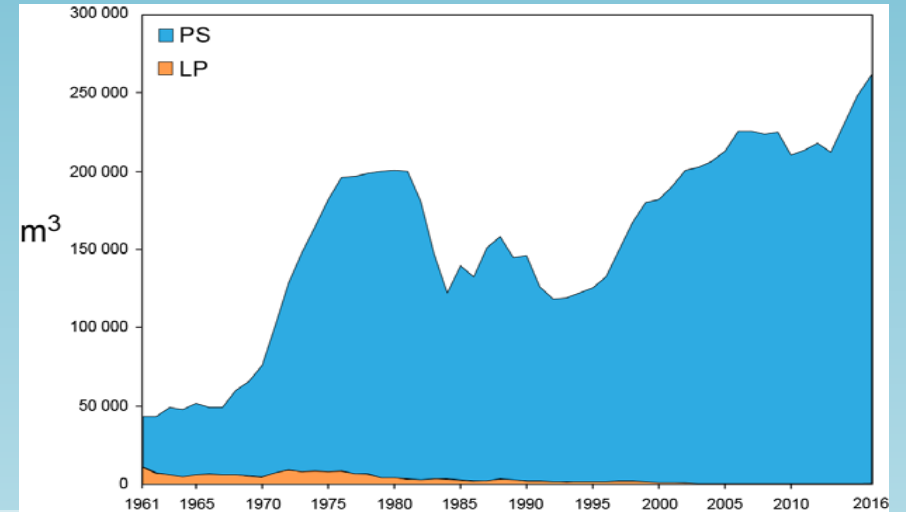
Atunes tropicales: Aleta amarilla, patudo, barrilete
Tropical tunas: Yellowfin, bigeye, skipjack



Palangre - Longline

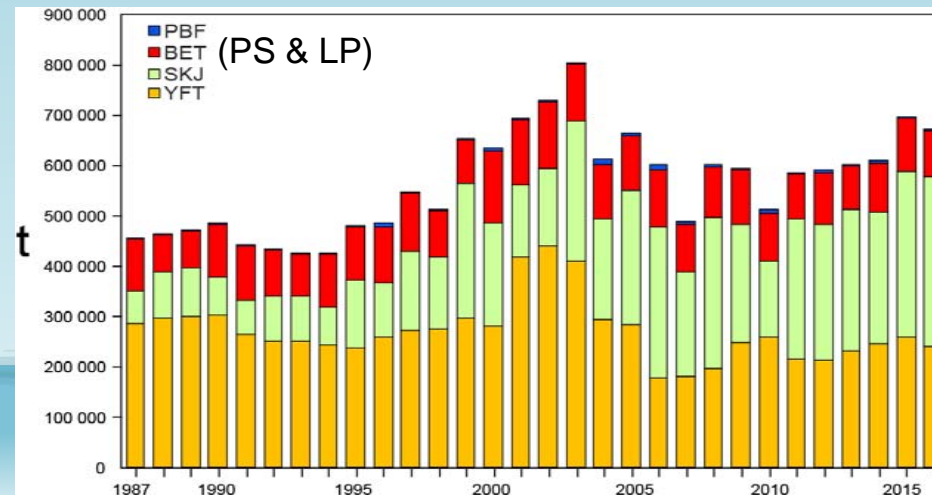


Capacidad de flota—Fleet capacity



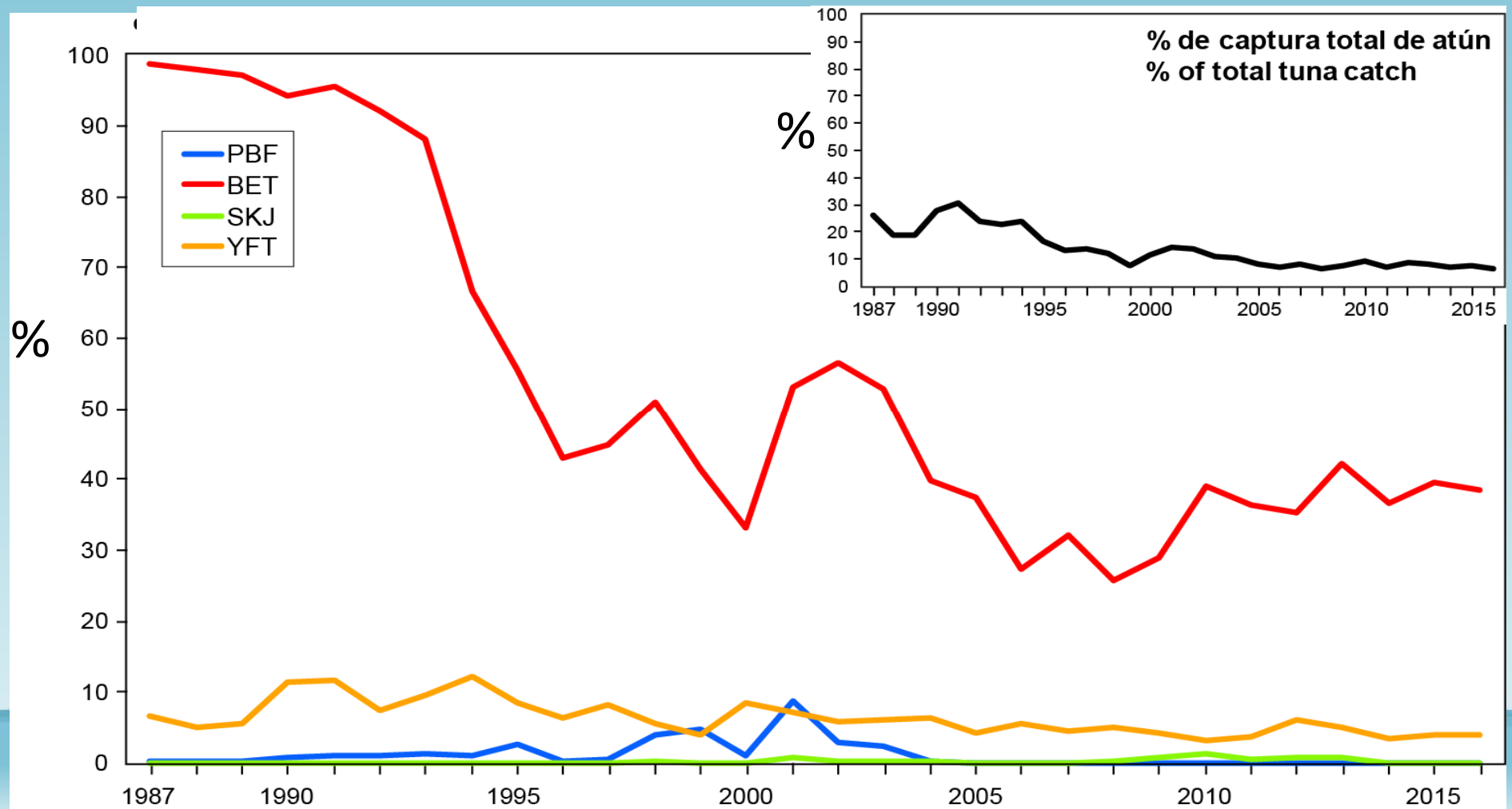
Capturas por especie—Catches by species

BET: patudo-bigeye
 PBF: aleta azul del Pacífico-
 Pacific bluefin
 SKJ: barrilete-skipjack
 YFT: aleta amarilla-yellowfin
 PS: cerco - purse-seine
 LL: palangre – longline
 LP: caña - pole-and-line

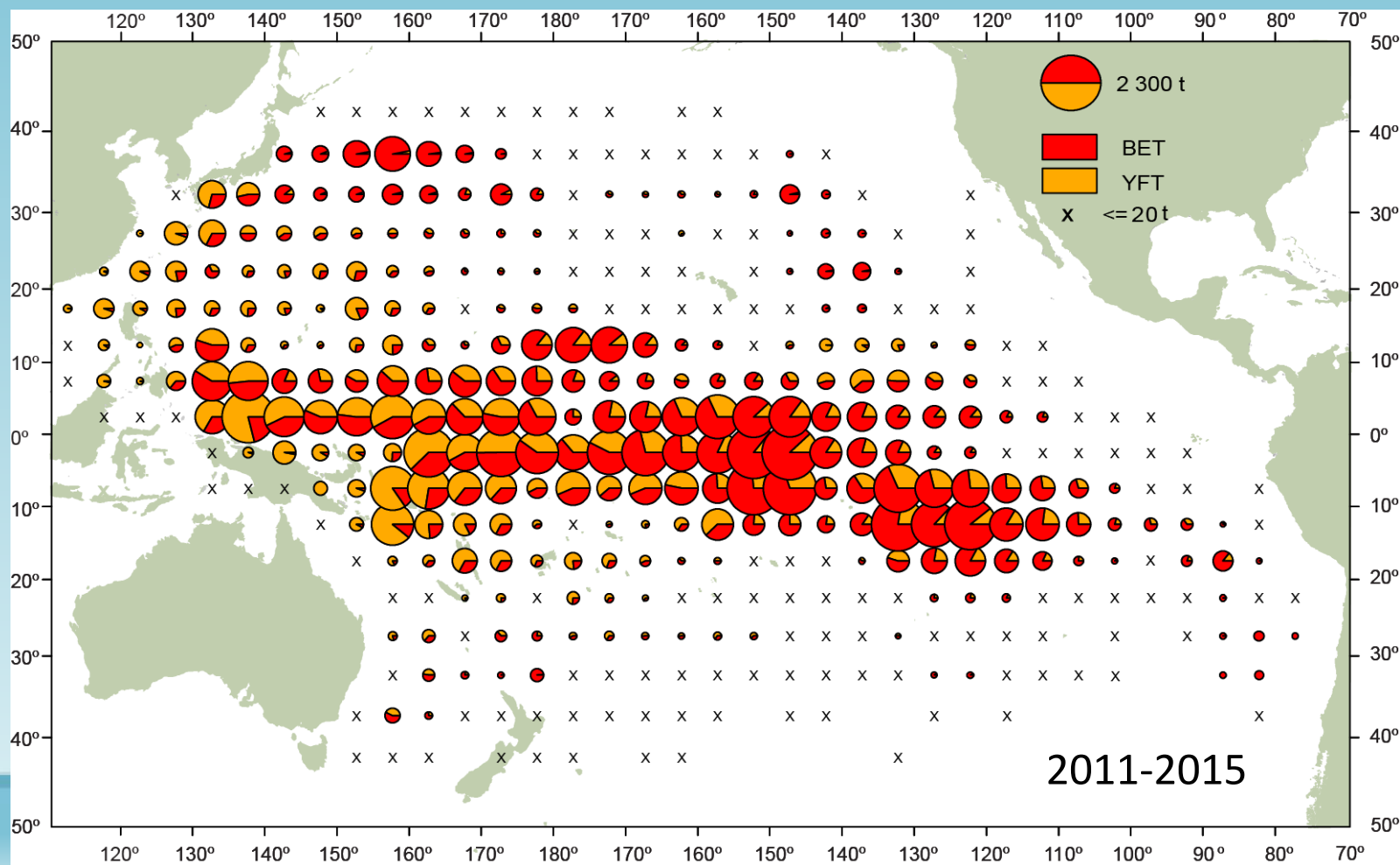


**2016:
682 000 t**

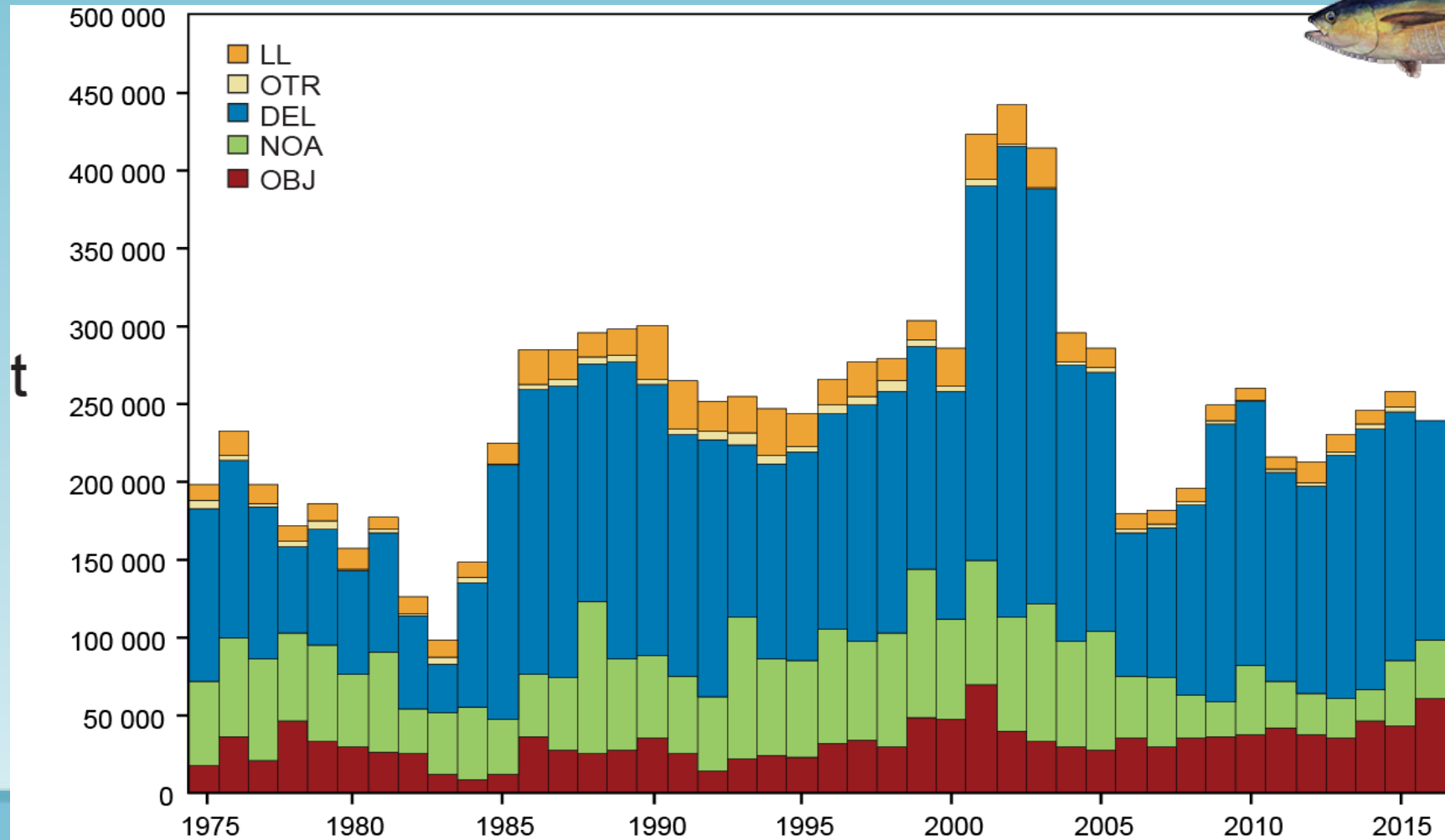
Captura palangrera por especie—Longline catch by species OPO-EPO, 1987-2016



Distribución de capturas palangreras-Distribution of longline catches 2011-2015

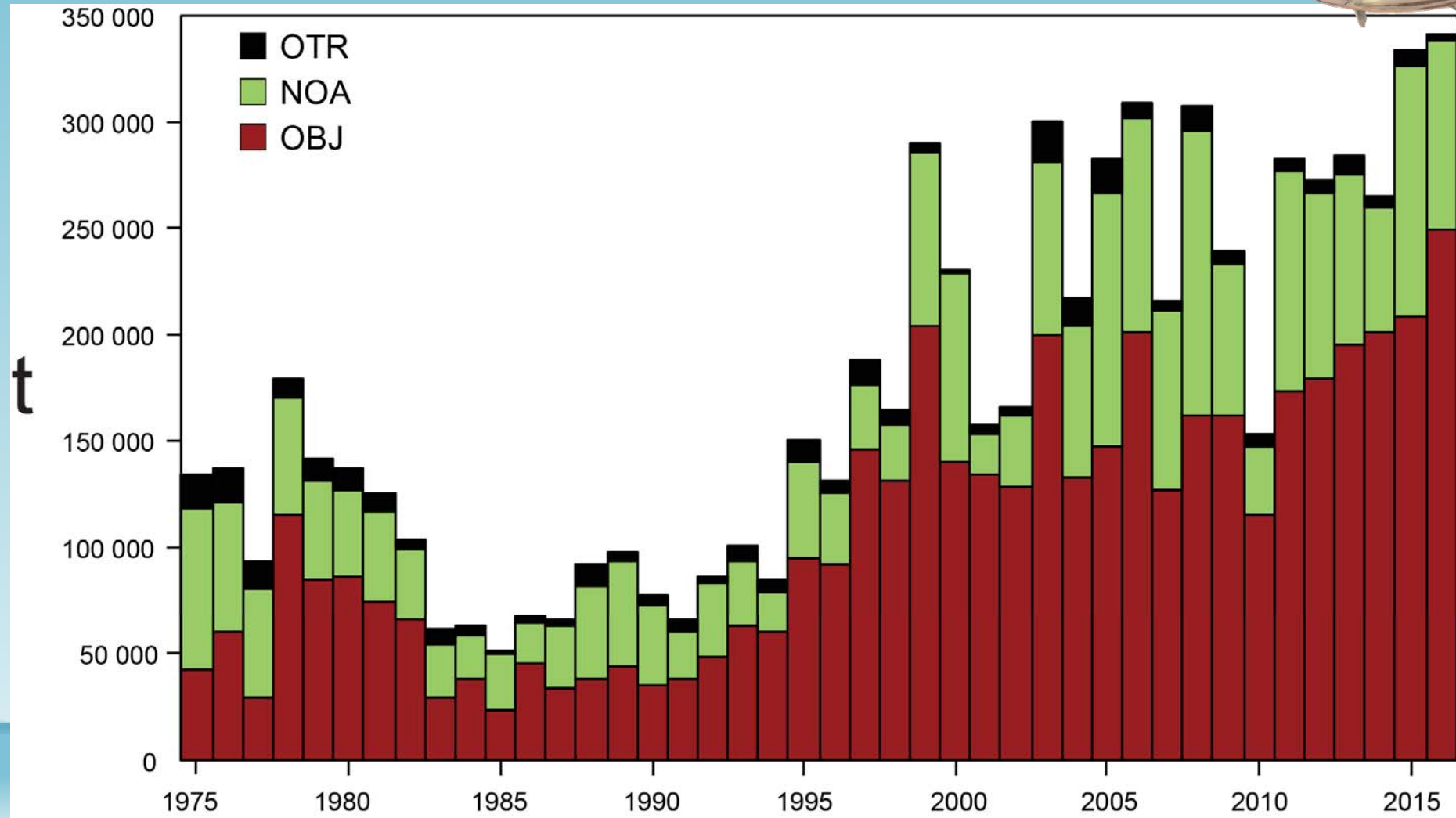


YFT: Captura por arte/tipo de lance–Catch by gear/set type

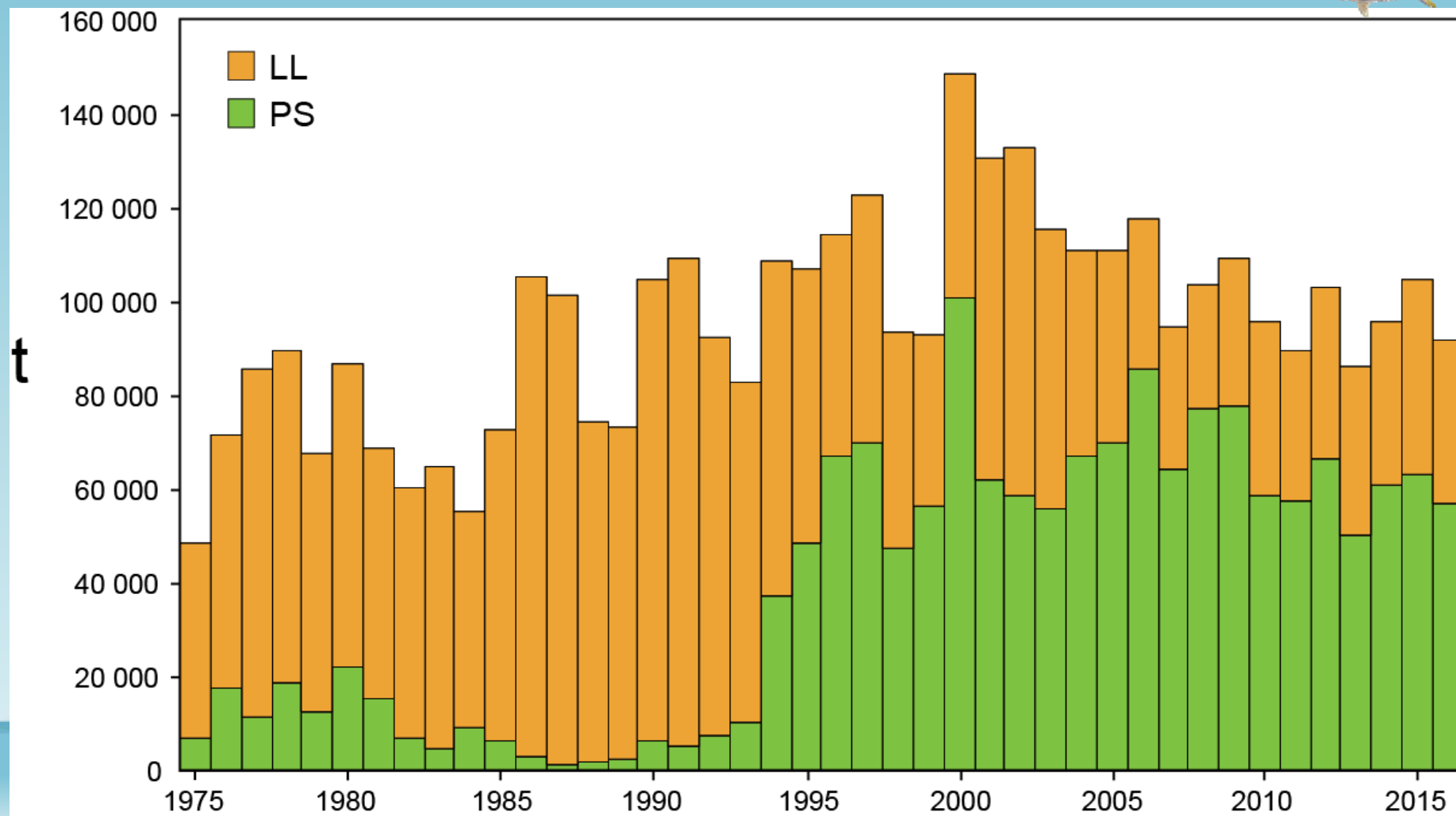


Tipos de lance-Set types: DEL: delfín – dolphin; NOA: no asociado – unassociated; OBJ: objeto flotante – floating object

SKJ: Captura por arte/tipo de lance—Catch by gear/set type



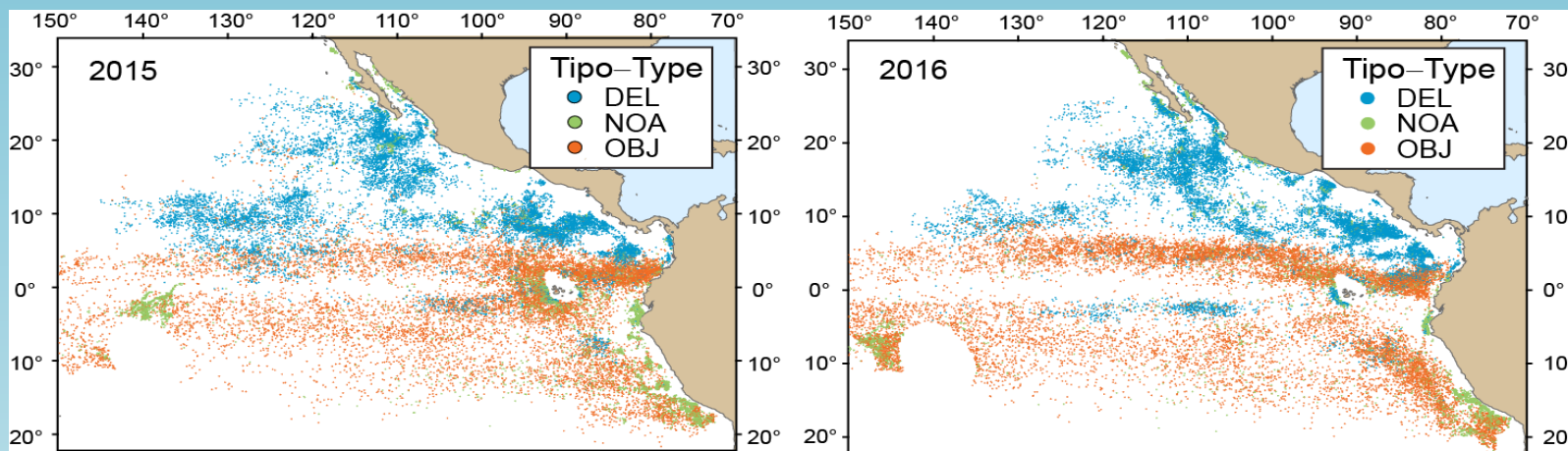
BET: Captura por arte – Catch by gear



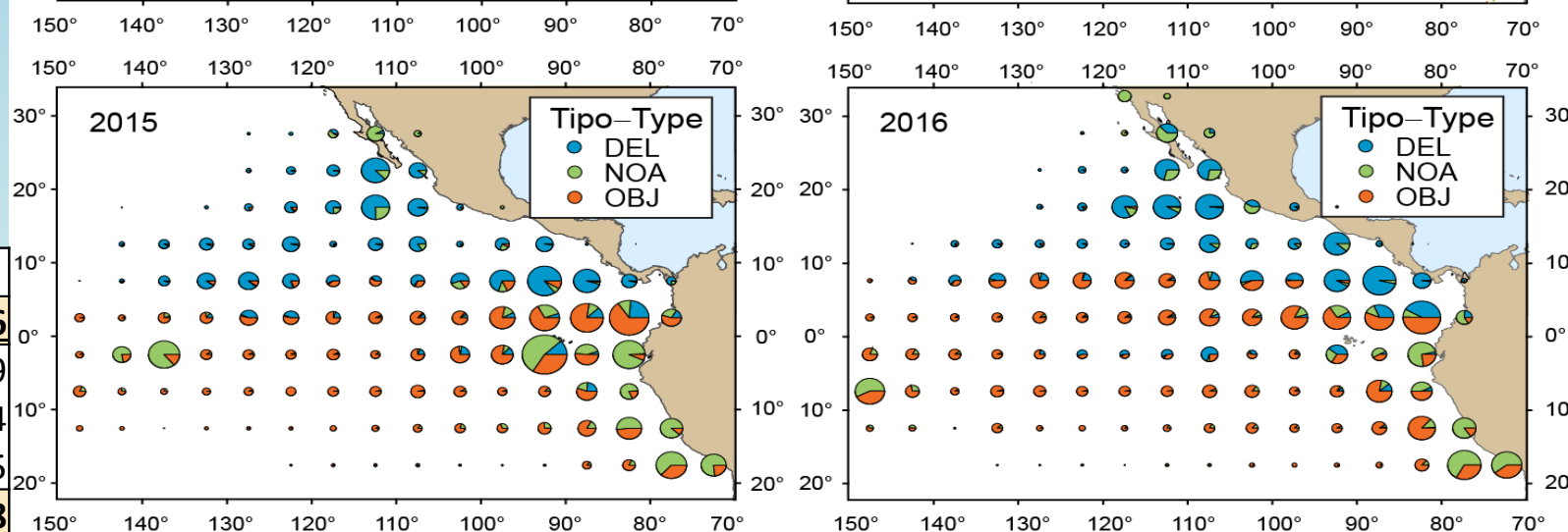
Distribución de lances de cerco, por tipo

Distribution of purse-seine sets, by type

Lances individuales
Individual sets



Por área de 5°x5°
By 5°x5° area



Lances-Sets

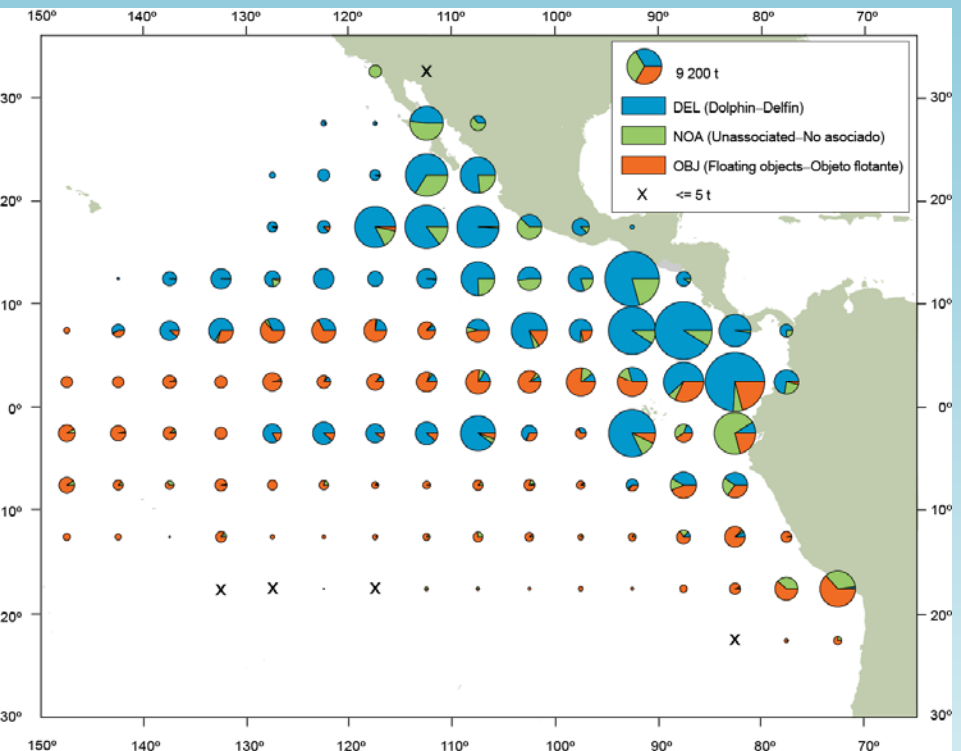
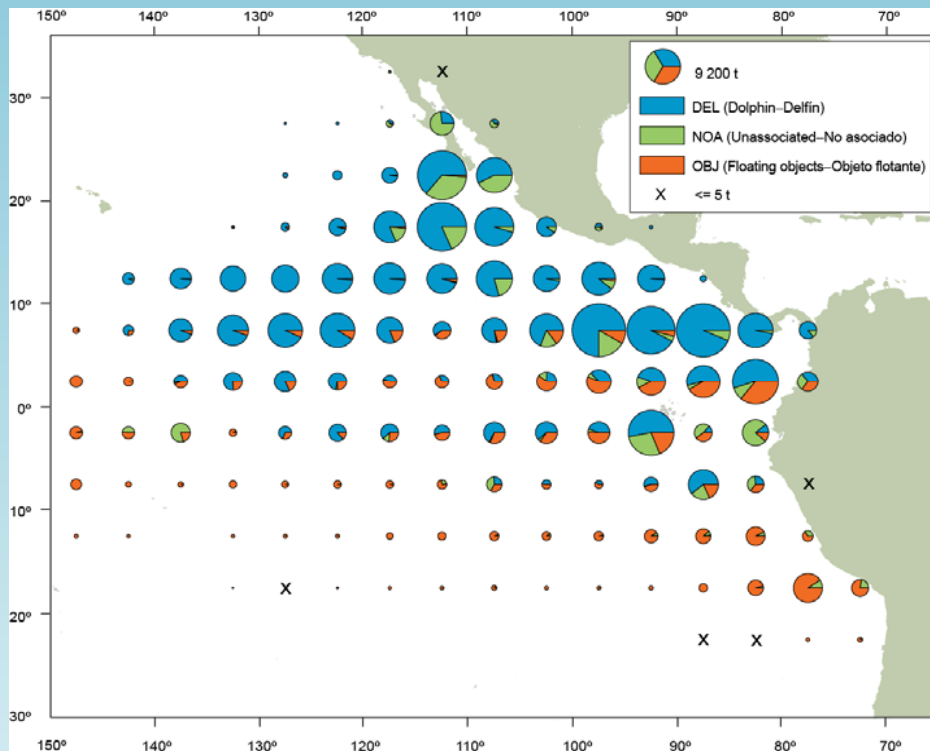
	2015	2016
DEL	11 020	11 219
NOA	9 313	7 294
OBJ	12 835	14 285
Total	33 168	32 798

YFT: Distribución de las capturas de cerco, por tipo de lance Distribution of purse-seine catches, by set type



Promedio–Average 2011-2015

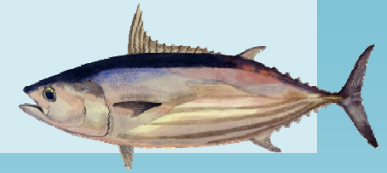
2016



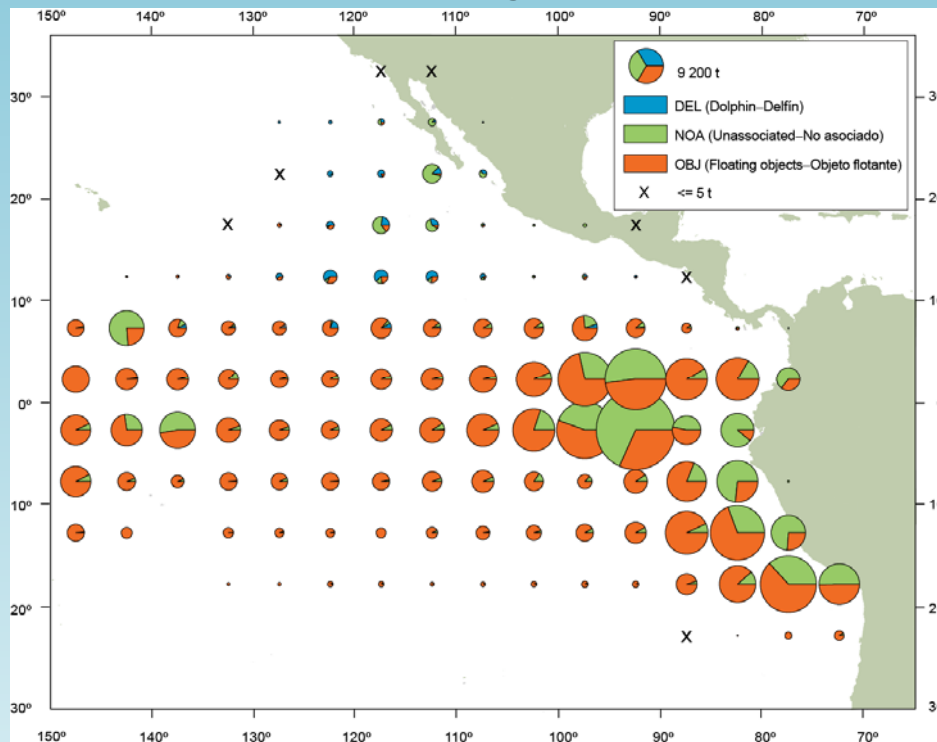
221 000 t
(198 000 - 246 000)

240 000 t
9% mayores-greater

SKJ: Distribución de las capturas de cerco, por tipo de lance Distribution of purse-seine catches, by set type

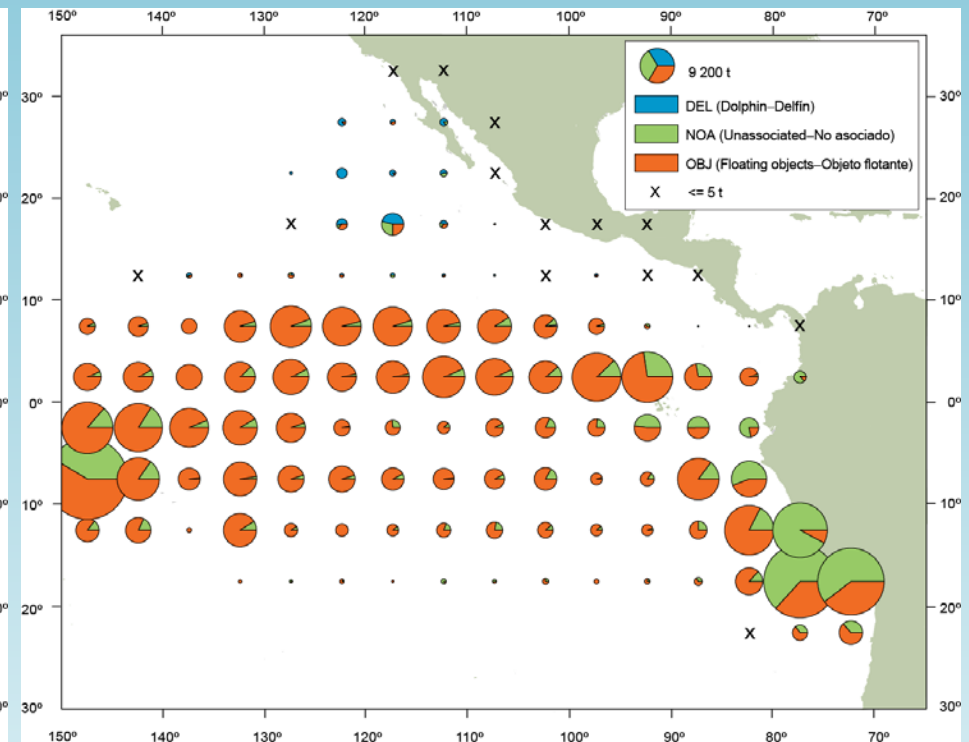


Promedio-Average 2011-2015



282 000 t
(261 000 - 328 000)

2016



337 000 t
19% mayores-greater

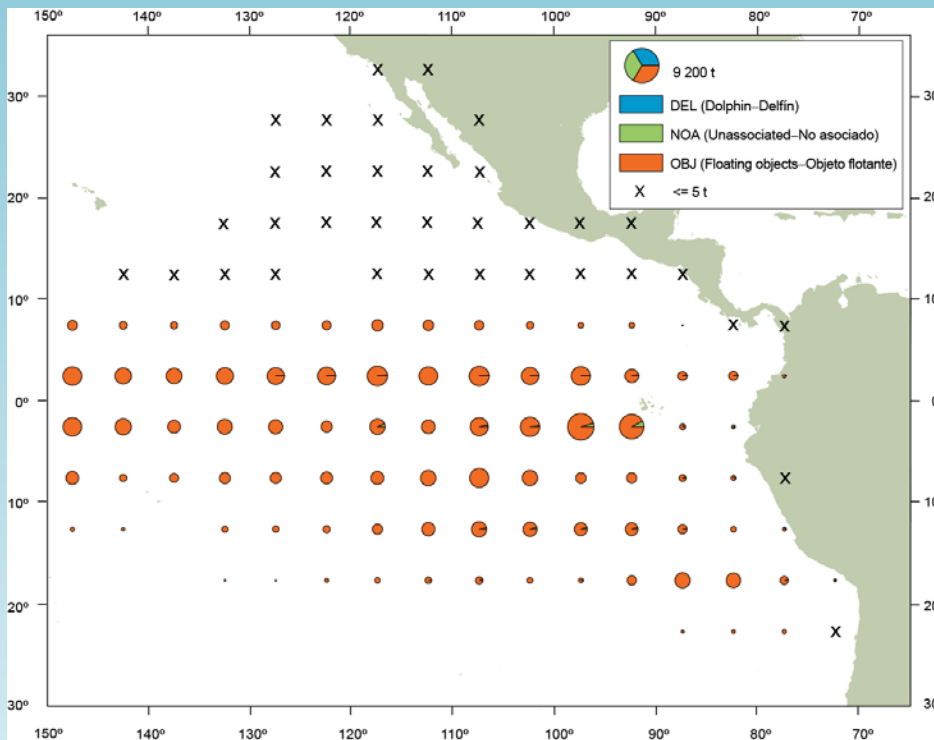
BET: Distribución de las capturas de cerco, por tipo de lance

Distribution of purse-seine catches, by set type

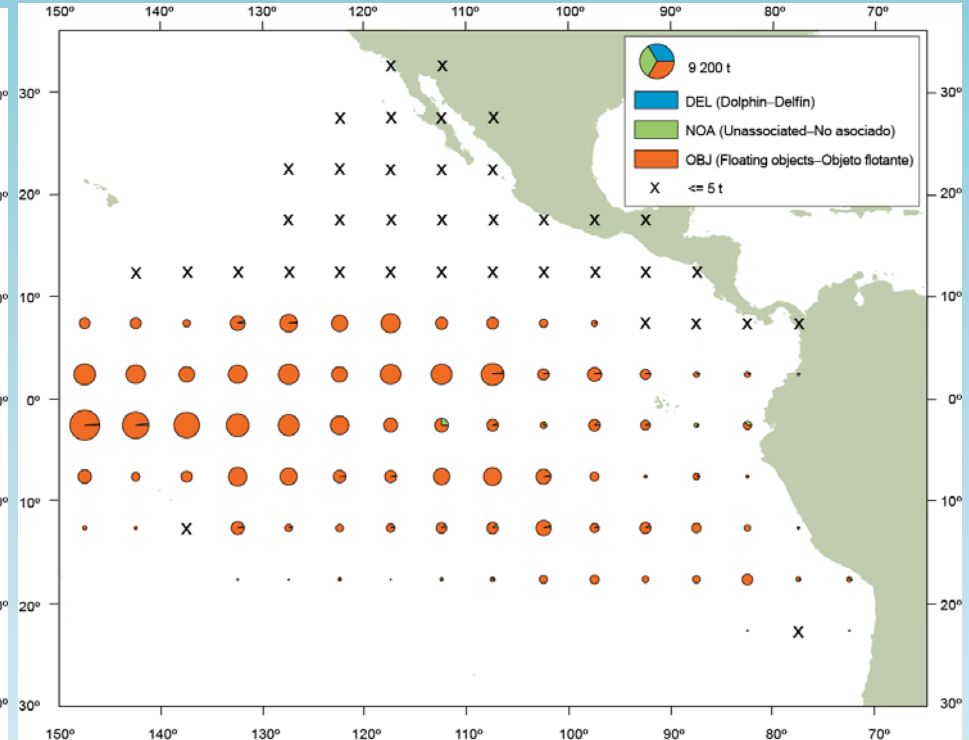


Promedio–Average 2011-2015

2016

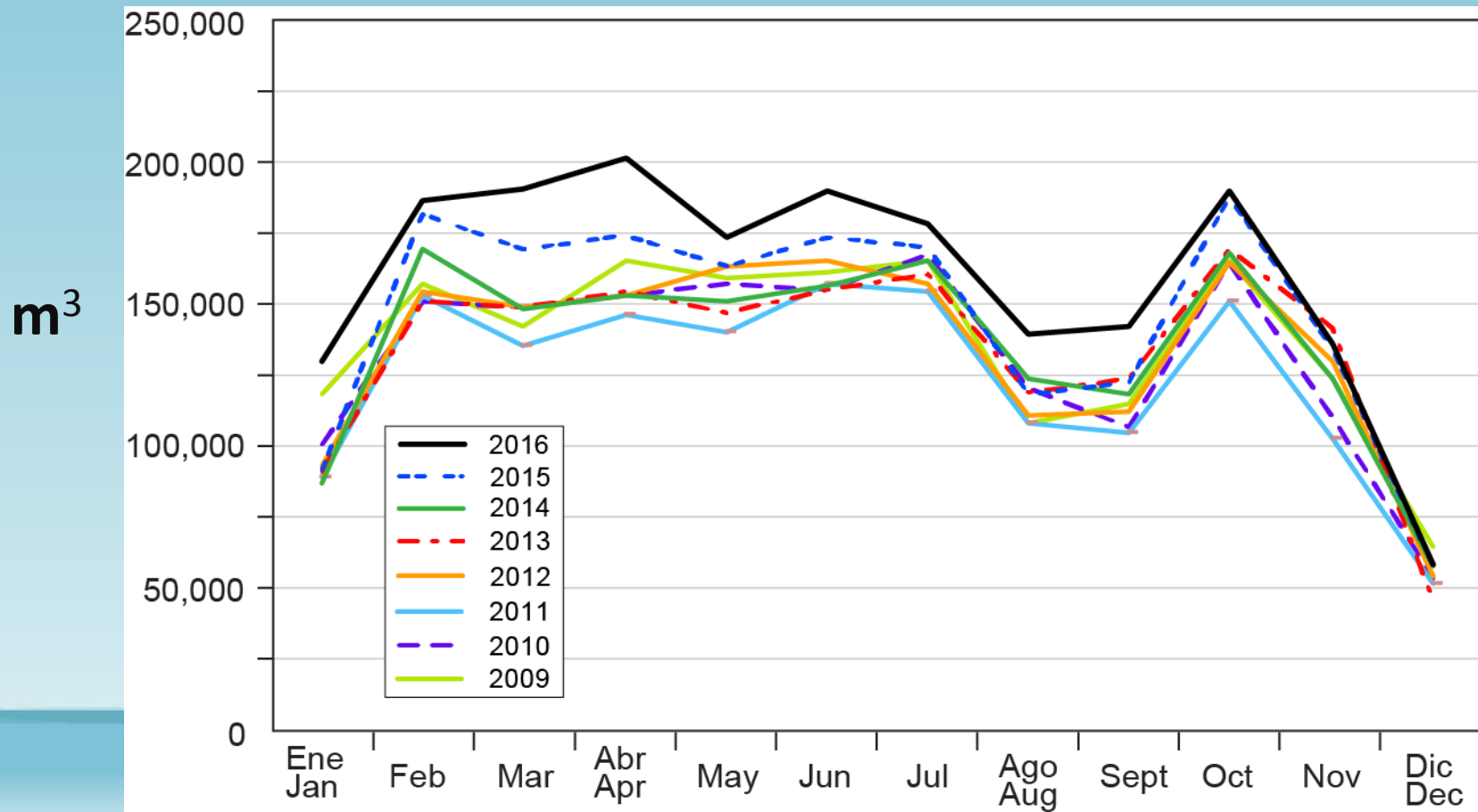


59 000 t
(49 000 - 66 000)

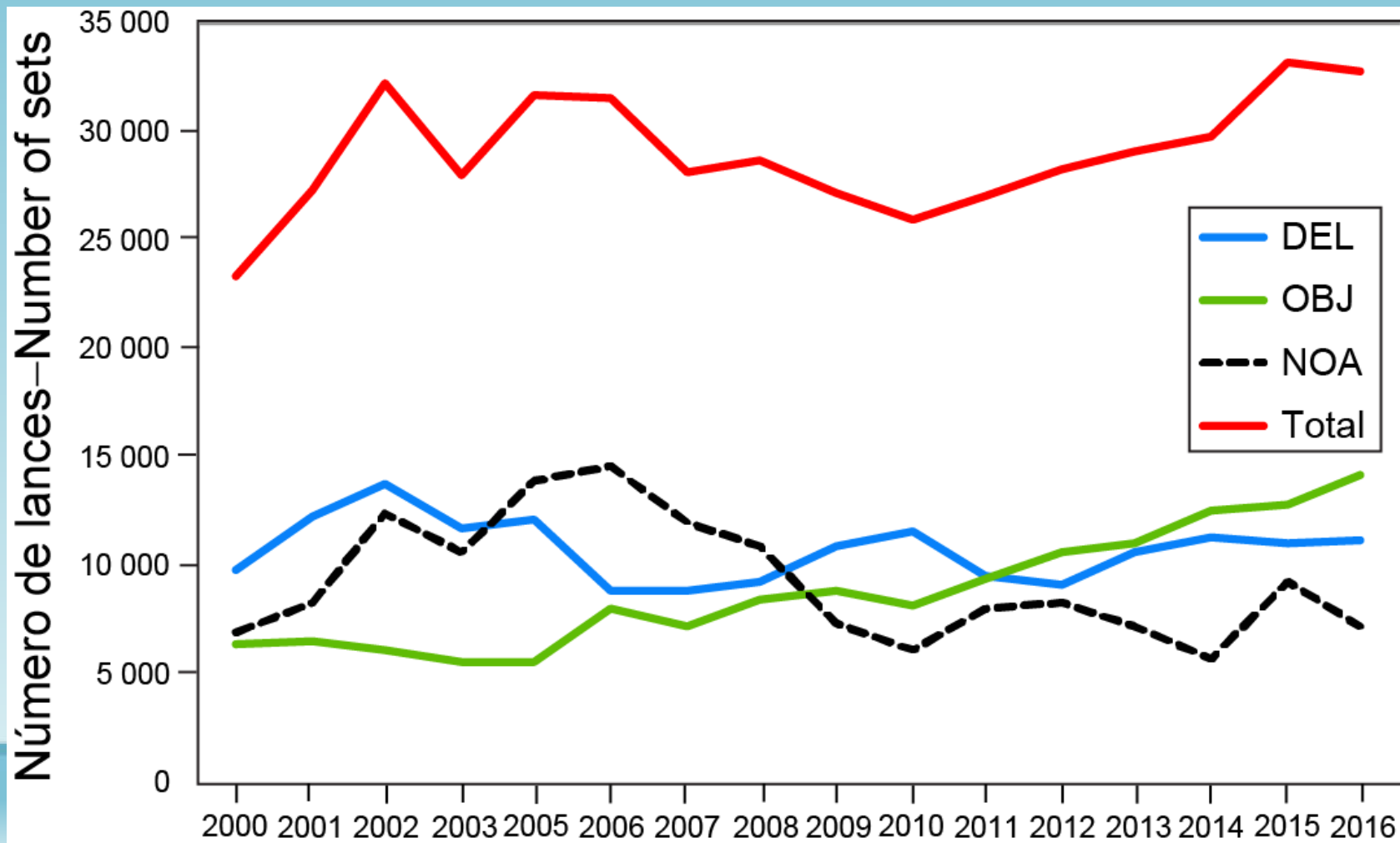


56 000 t
5% menores-lower

Capacidad promedio de buques de cerco y caña en el mar, por mes
Average capacity of purse-seine and pole-and-line vessels at sea, by month
2009-2016

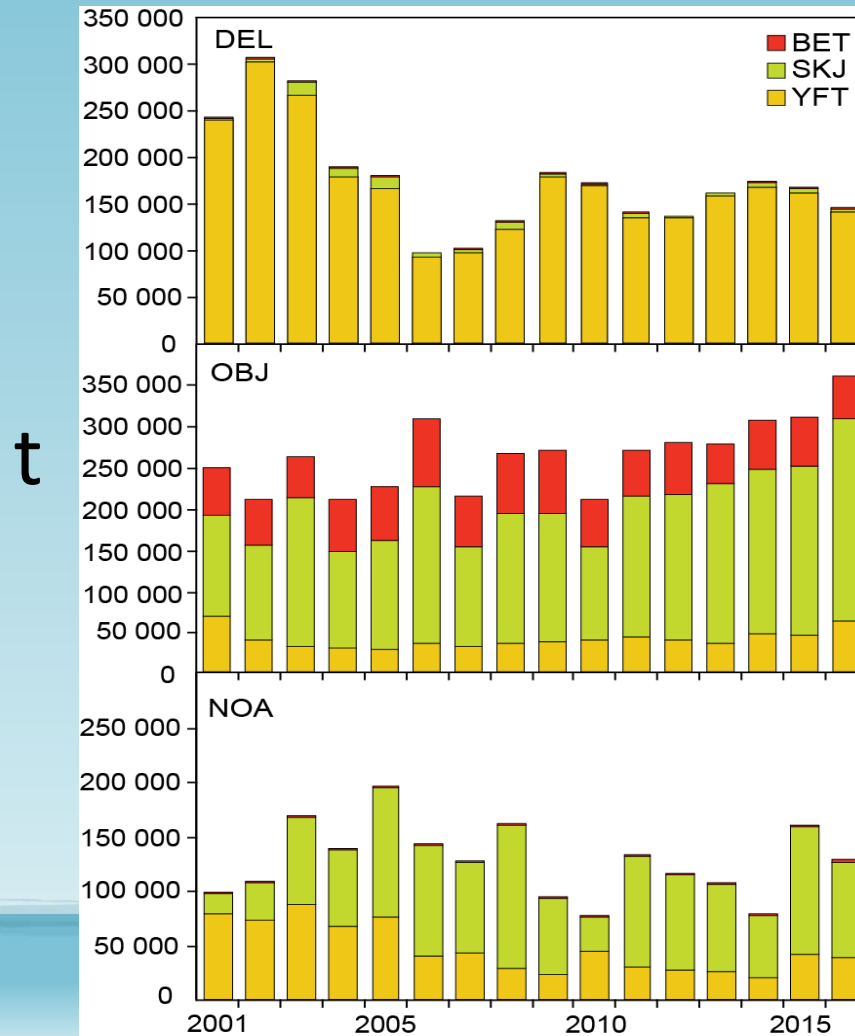


Número de lances de cerco, por tipo-Number of purse-seine sets, by type 2000-2016



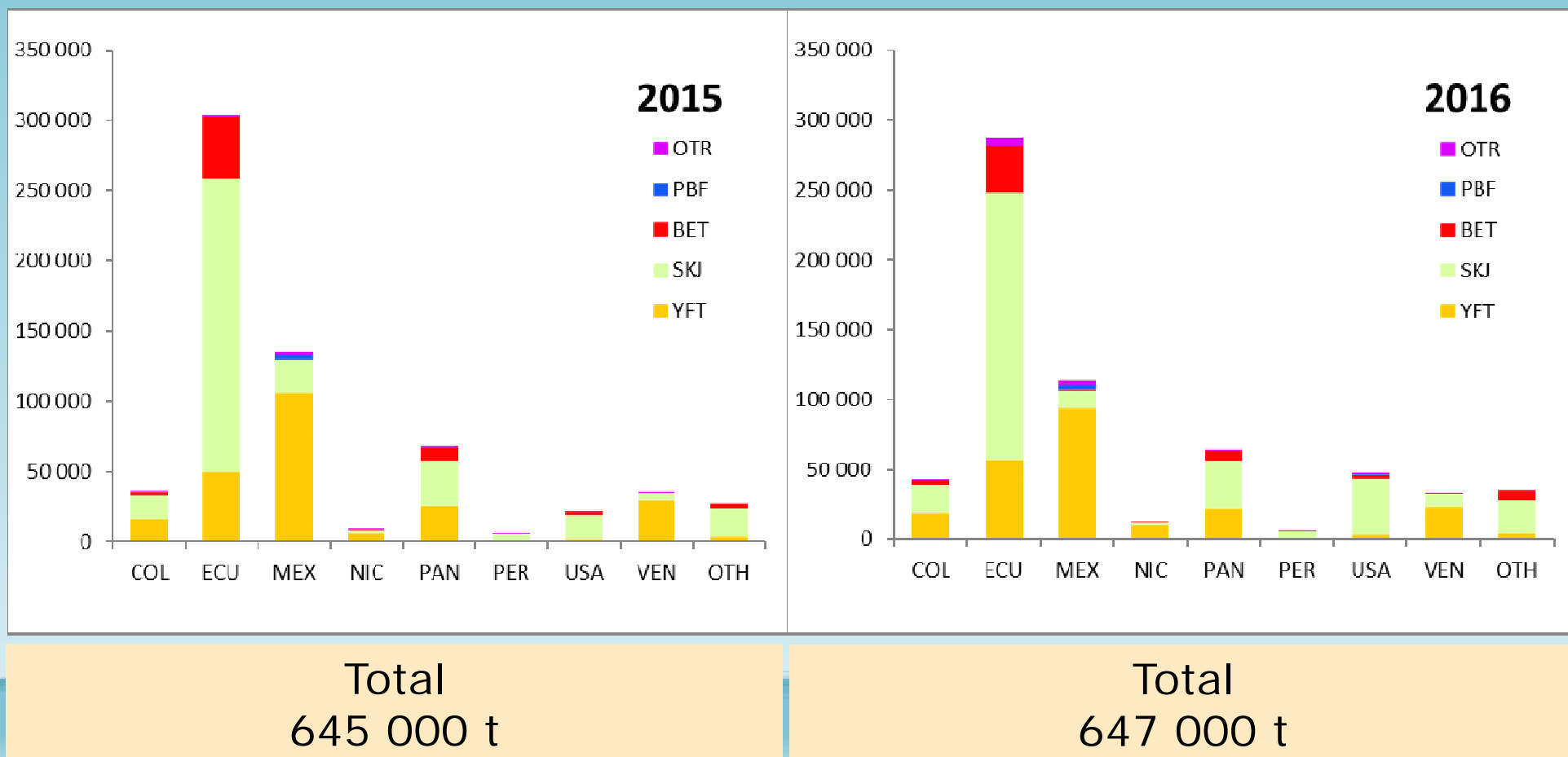
Capturas cerqueras de atunes, por especie y tipo de lance, 2001-2016

Purse-seine catches of tunas, by species and set type, 2001-2016

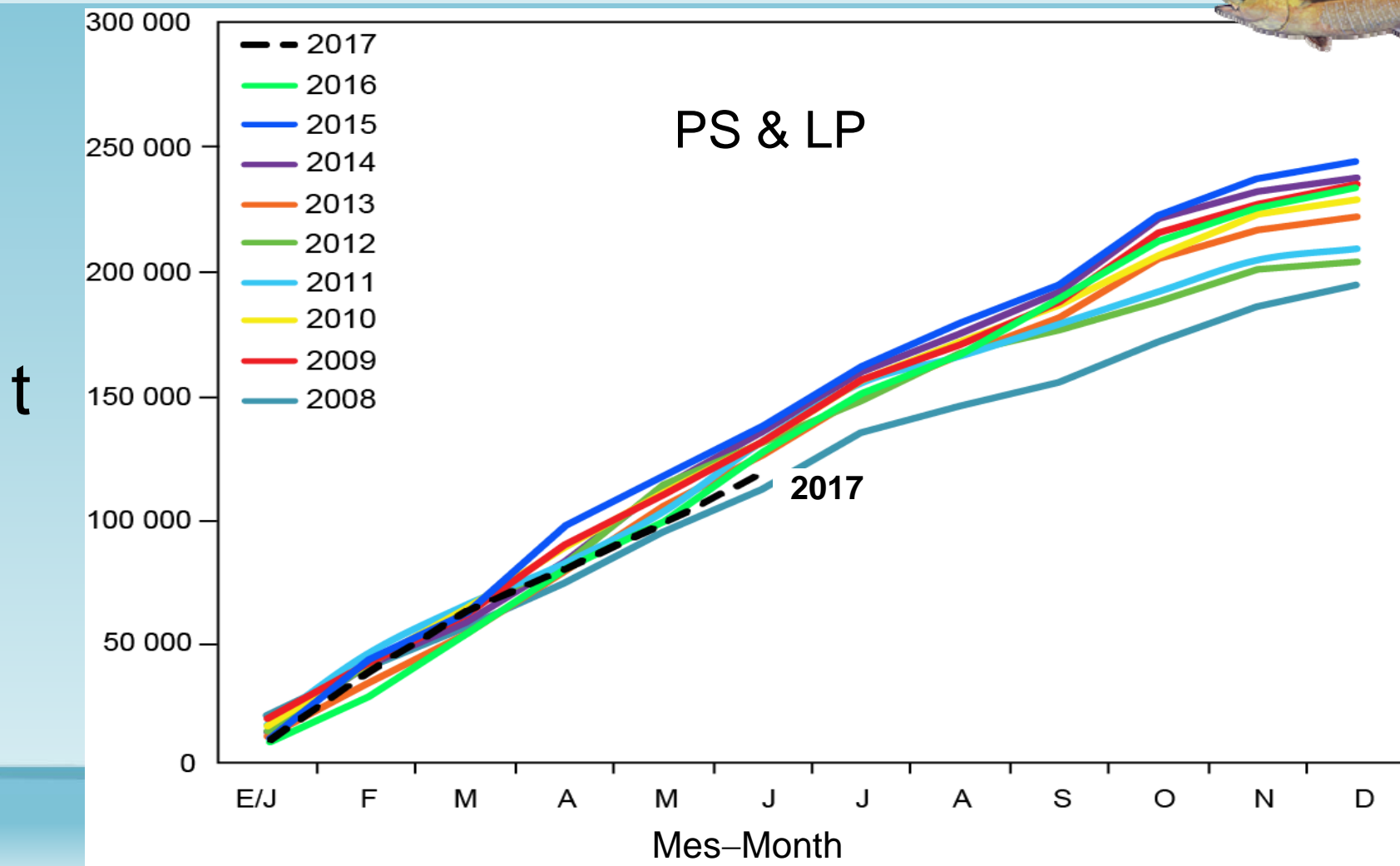


Capturas cerqueras, por pabellón - Purse-seine catches, by flag

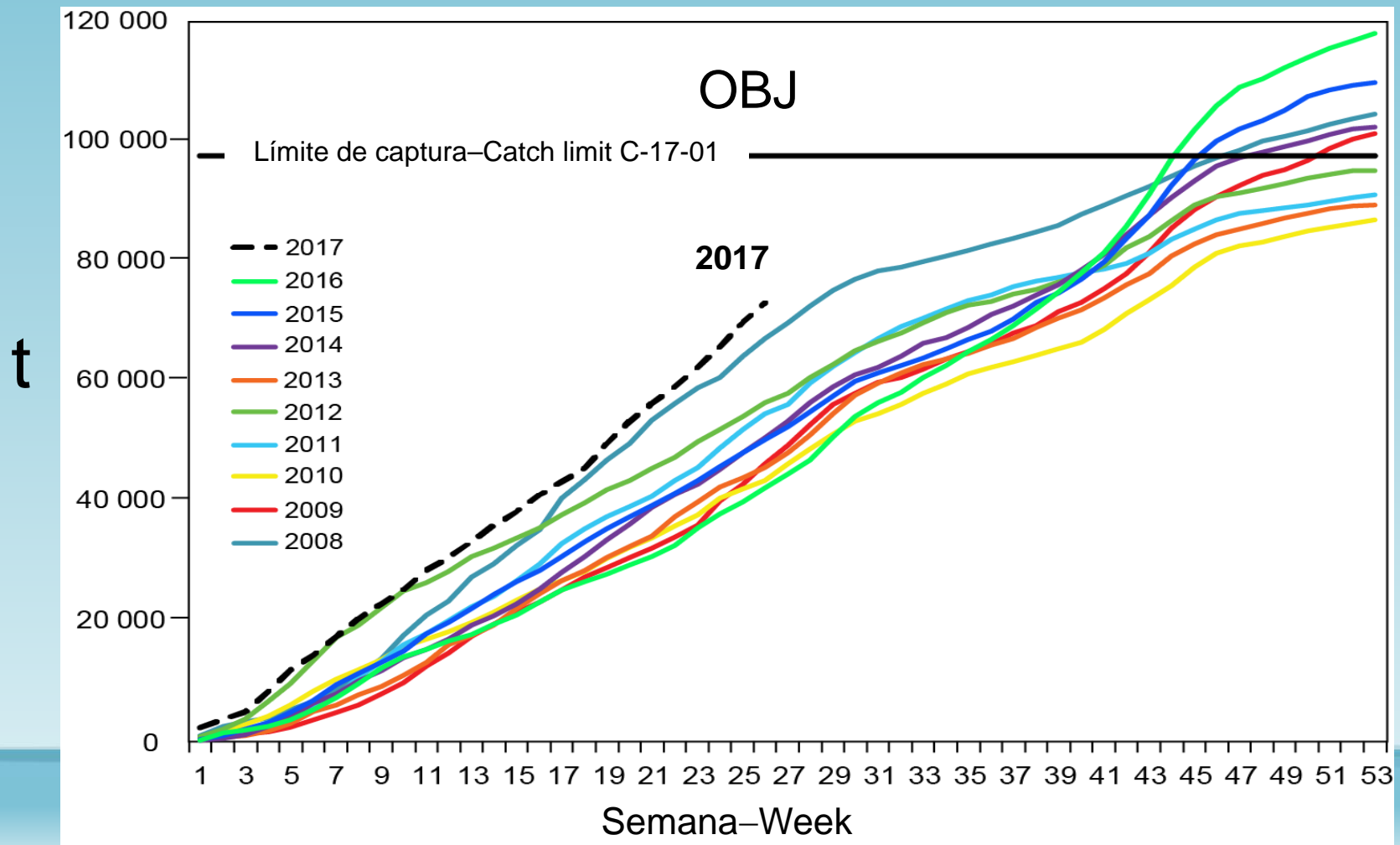
Todas especies - All species



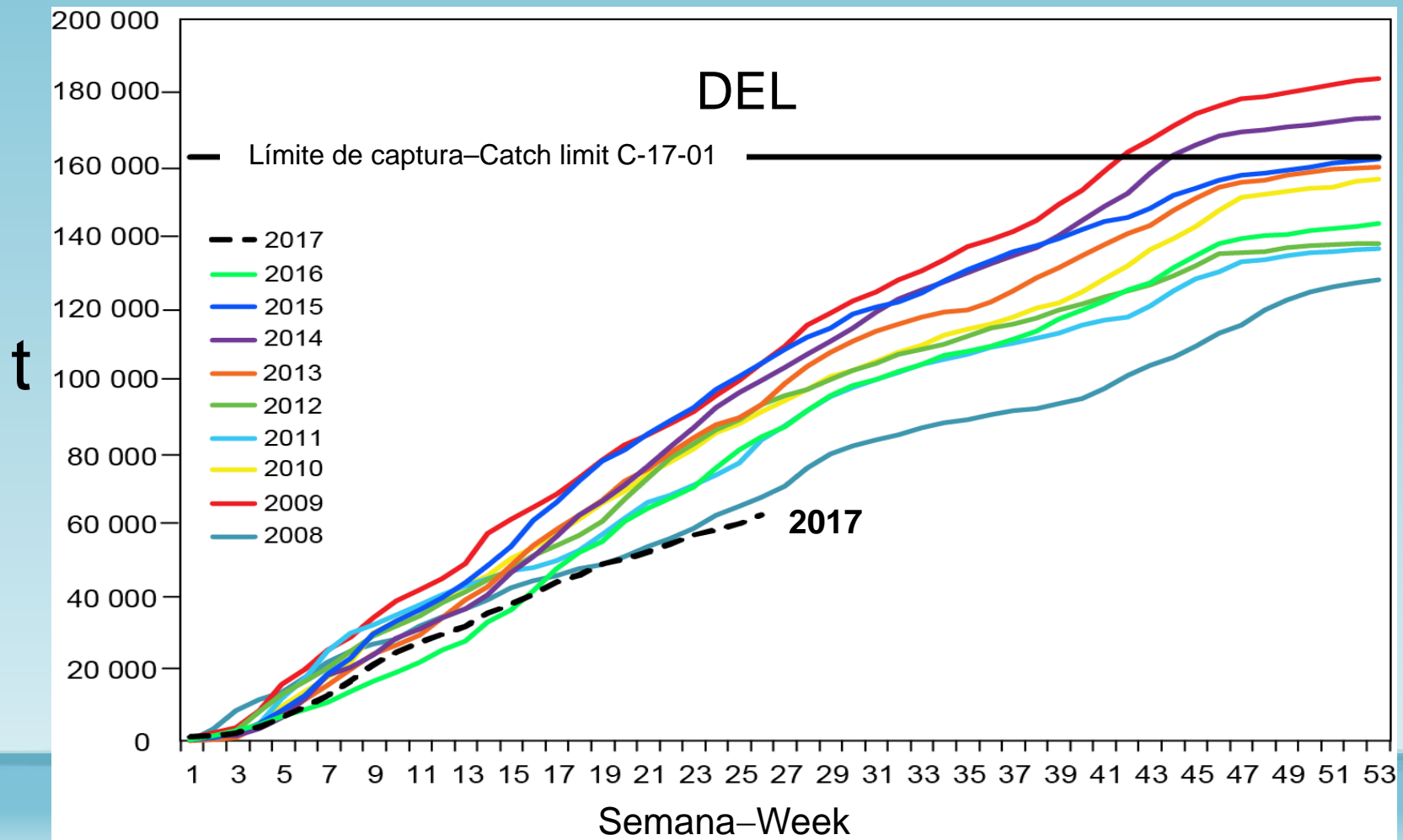
YFT: Captura acumulativa–Cumulative catch



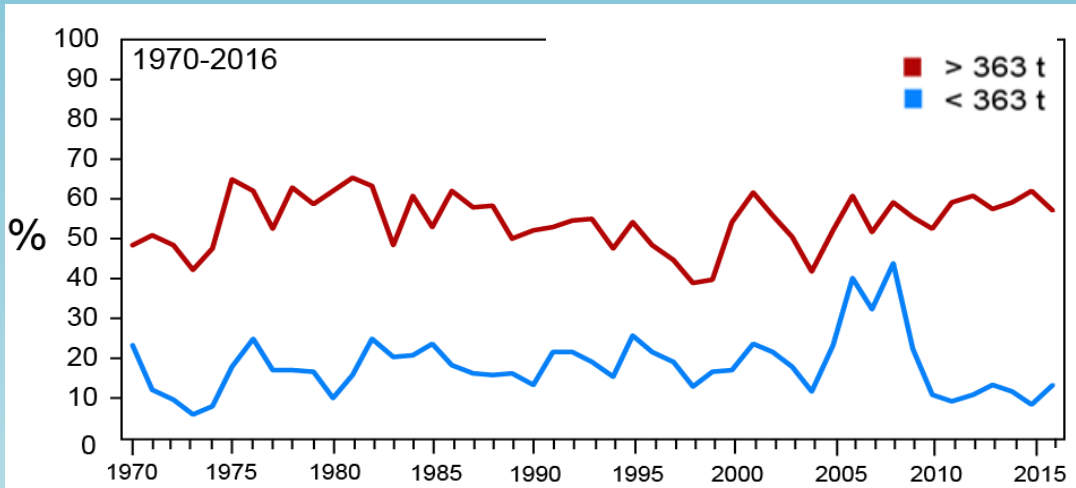
YFT+BET: Captura acumulativa–Cumulative catch



YFT+BET: Captura acumulativa–Cumulative catch

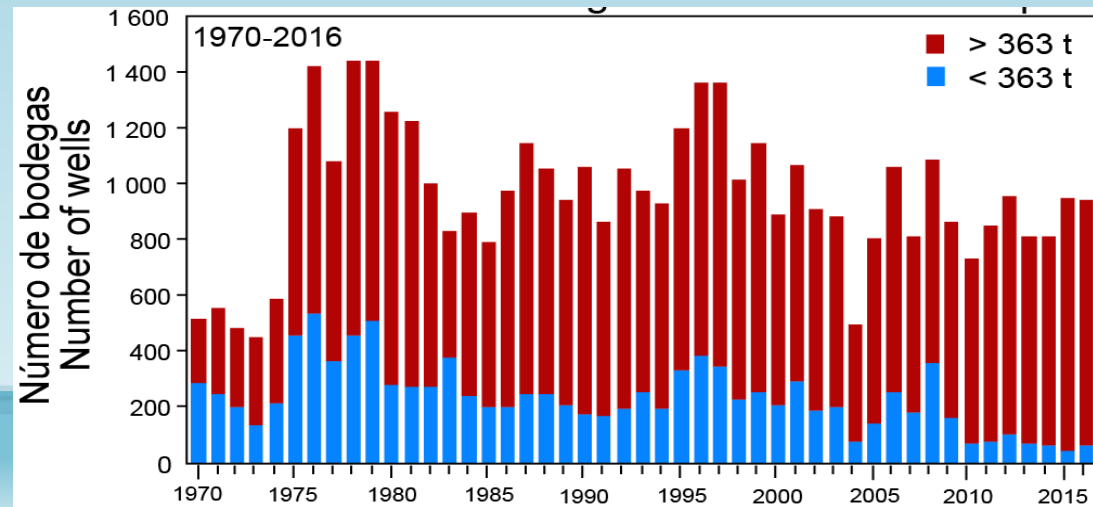


Muestreo de frecuencia de tallas – Length-frequency sampling



Viajes muestreados (%)
Trips sampled (%)

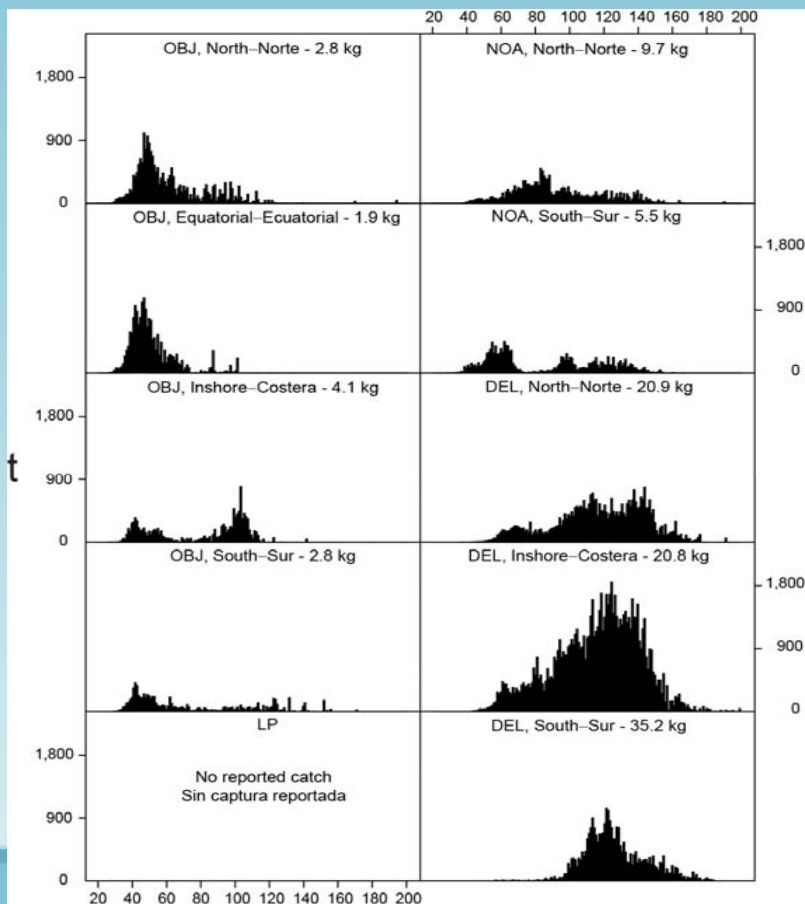
Bodegas muestreadas
Wells sampled



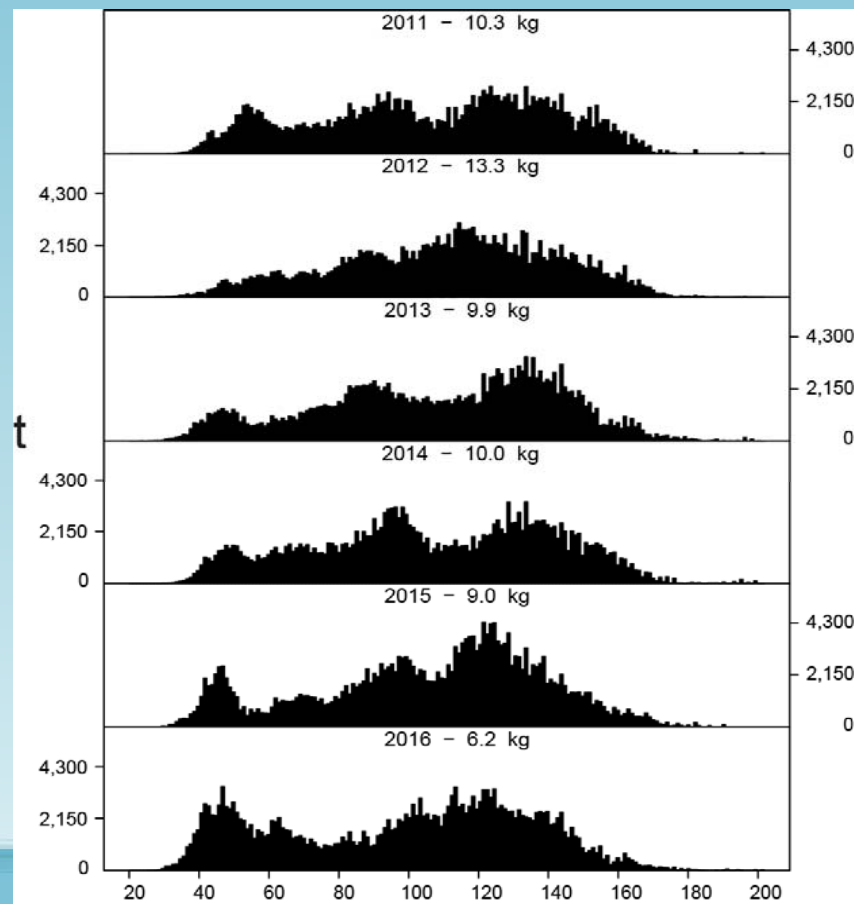
YFT: Composición por tallas de la captura de cerco Size composition of the purse-seine catch



2016, por área y tipo de lance-by area and set type



2011- 2016

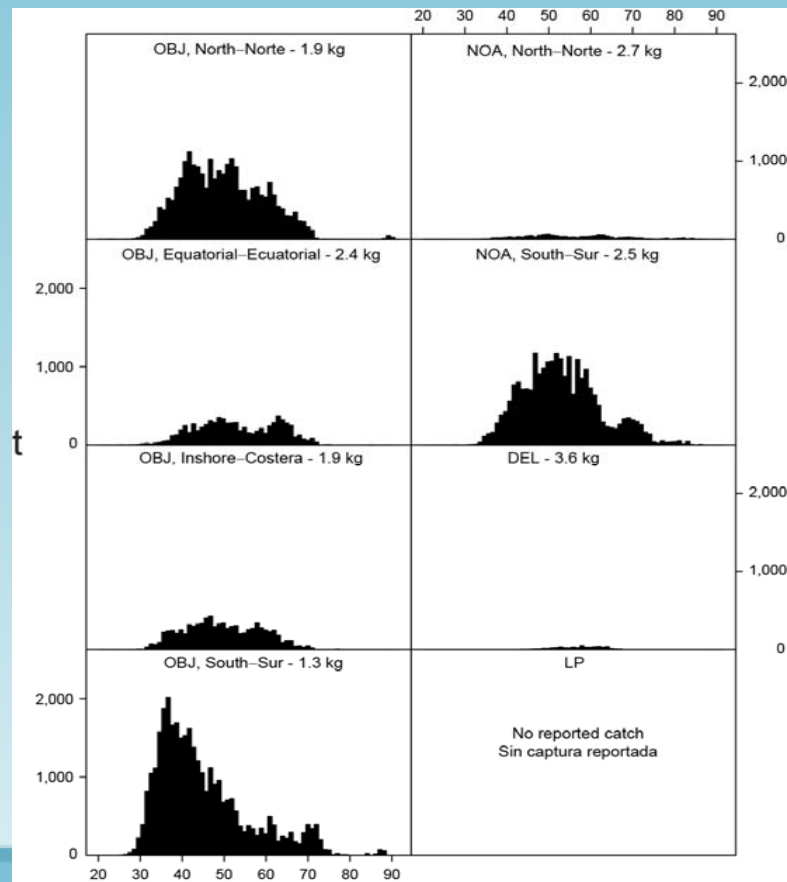


Length (cm)–Talla (cm)

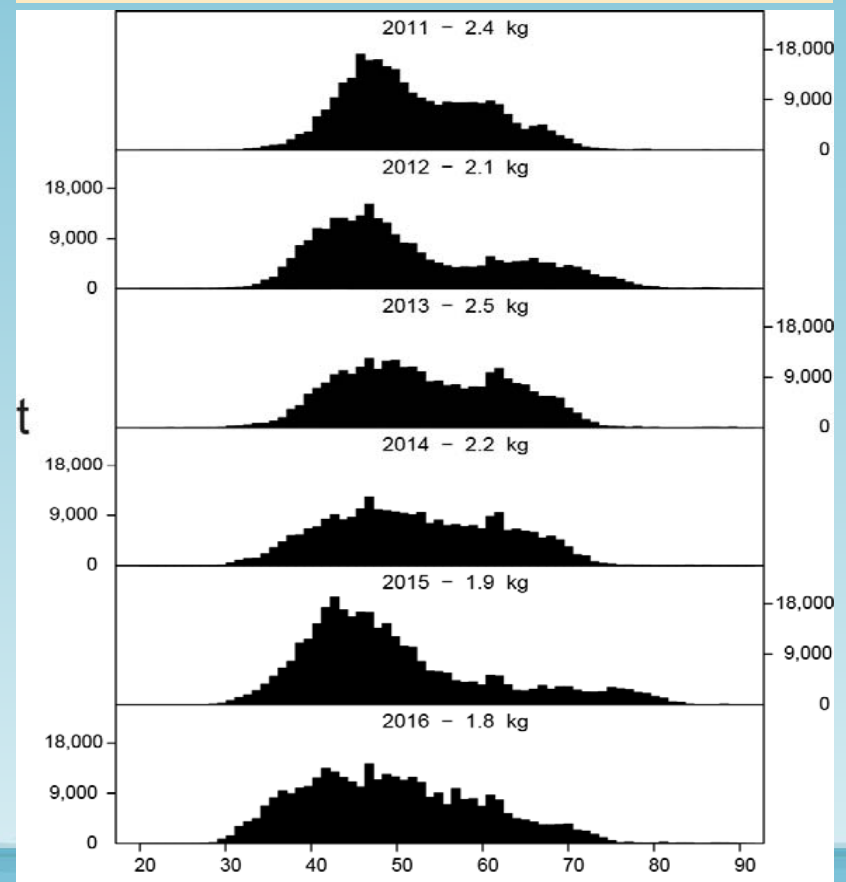
SKJ: Composición por tallas de la captura de cerco
 Size composition of the purse-seine catch



2016, por área y tipo de lance-by area and set type



2011- 2016

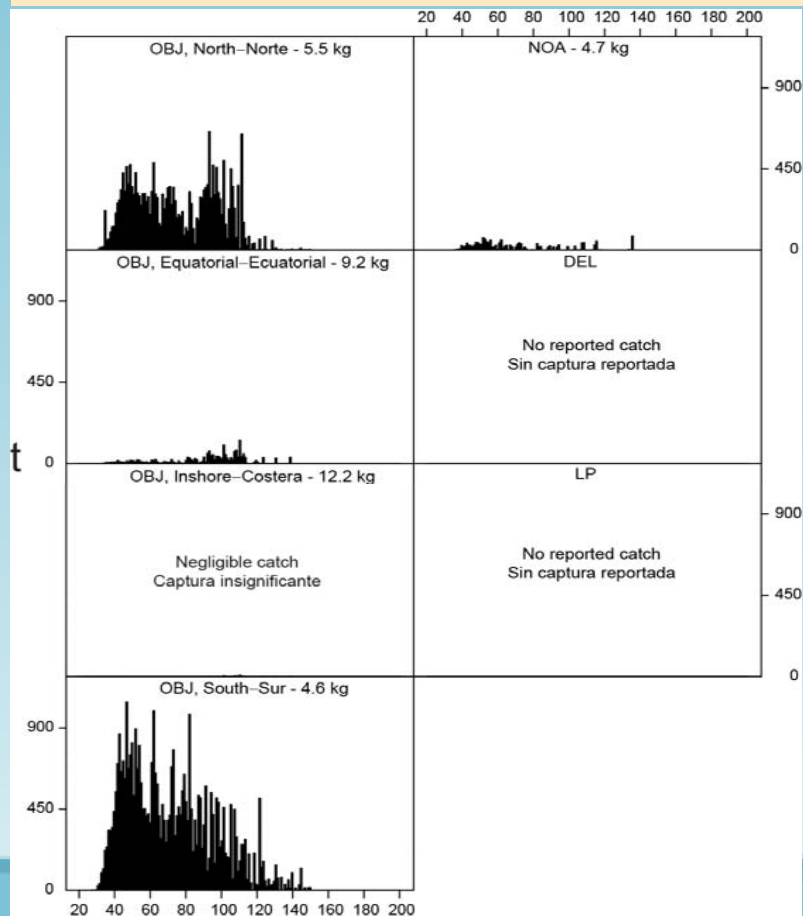


Length (cm)–Talla (cm)

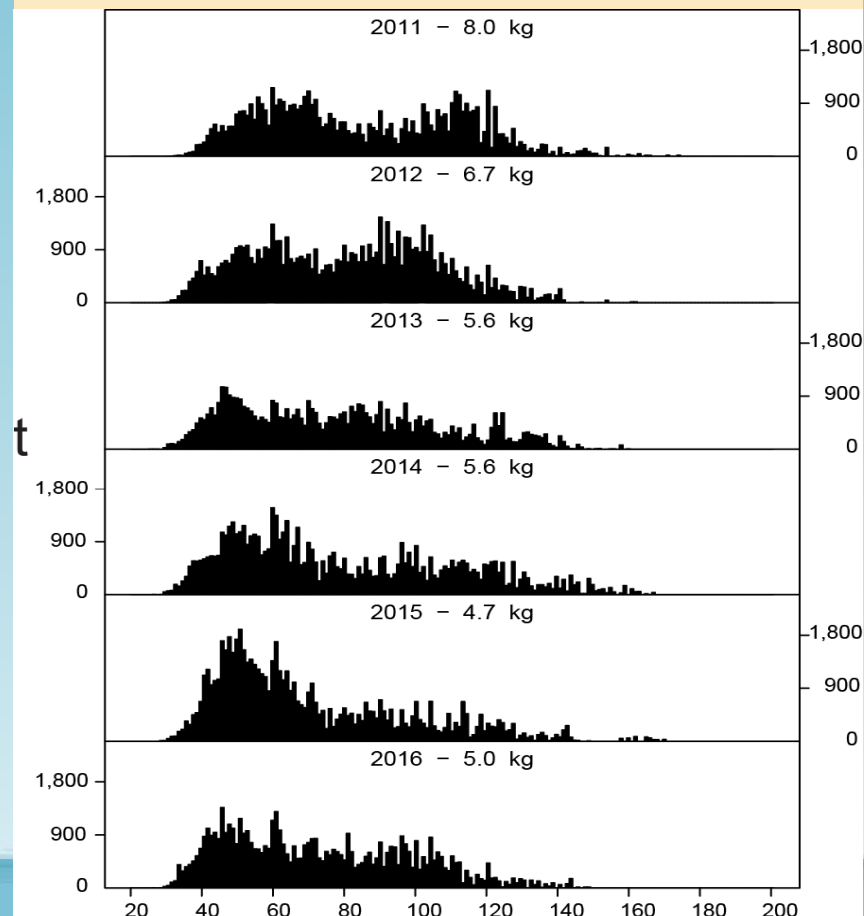
BET: Composición por tallas de la captura de cerco Size composition of the purse-seine catch



2016, por área y tipo de lance-by area and set type



2011- 2016

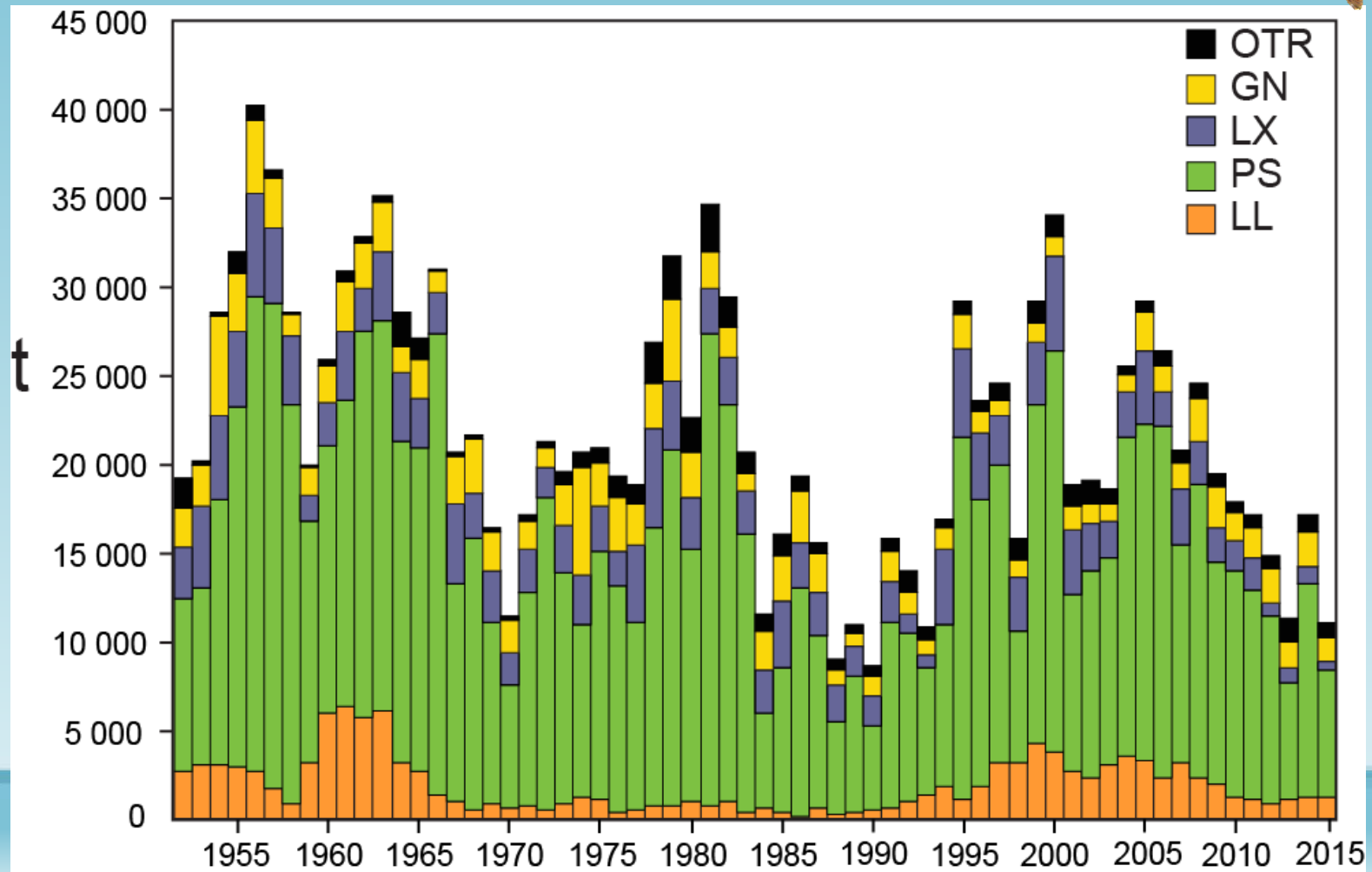


Length (cm)–Talla (cm)

Aleta azul del Pacífico—Pacific bluefin tuna

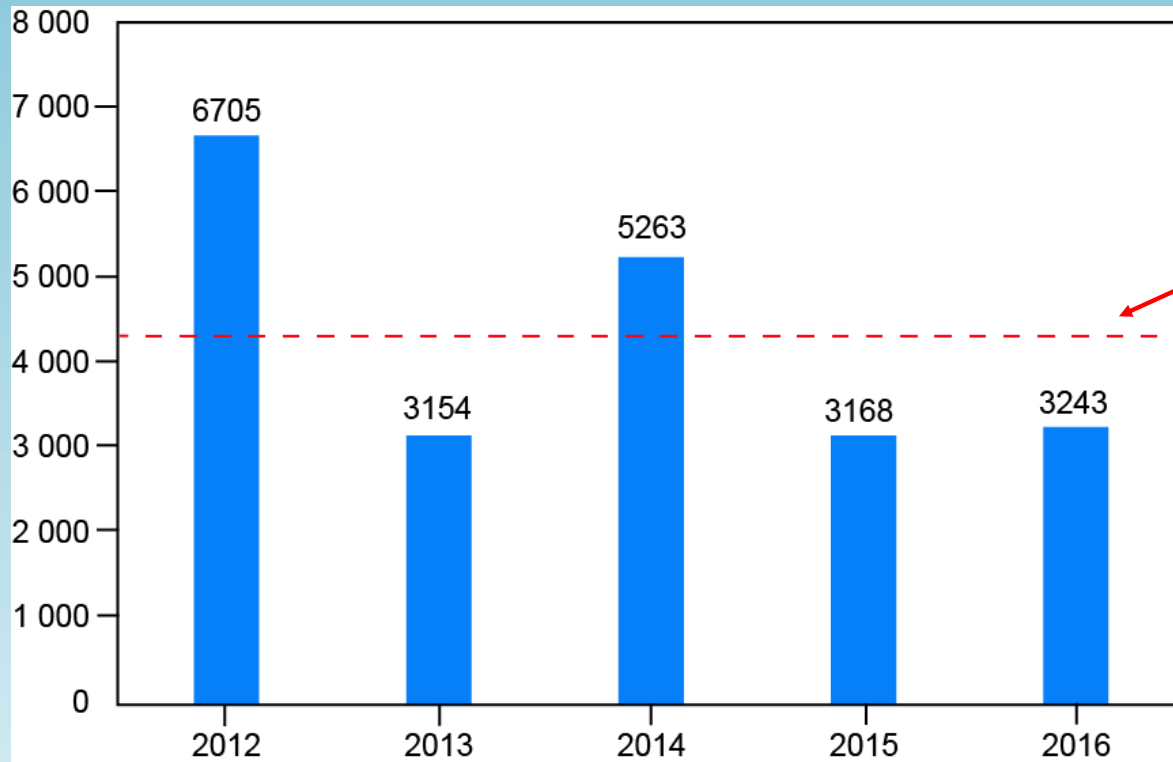


PBF: Capturas retenidas, por arte—Retained catches, by gear 1950-2016



GN: red de
trasmallo-
gillnet
LX: caña -
hook-and-
line

PBF: Capturas de cerco-Purse-seine catches OPO-EPO, 2012-2016



Promedio 5 años
5-year average
4 307 t

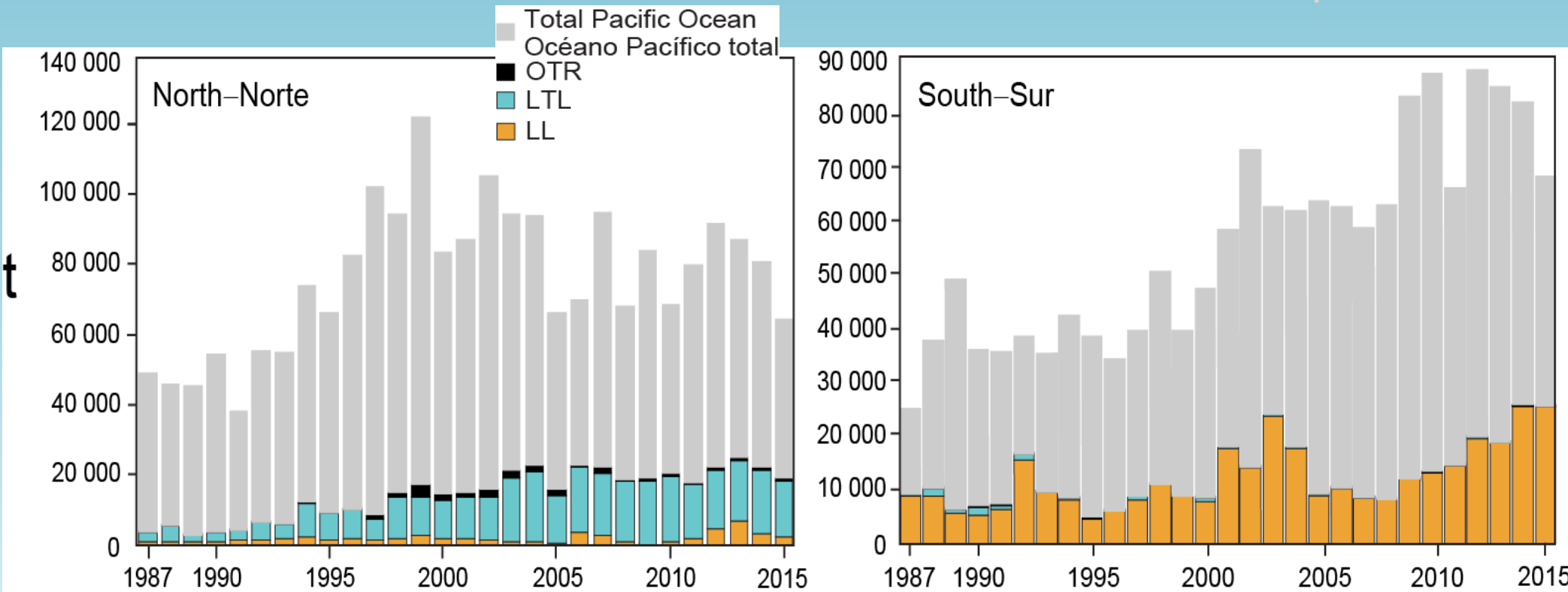
Informe de capturas liberadas—
Report released catches



Albacora-Albacore



ALB: Capturas retenidas—Retained catches 1986-2016



LTL: curricán-troll



CIAT
IATTC

¿Preguntas?—Questions?