

Comisión Interamericana del Atún Tropical  
Inter-American Tropical Tuna Commission



INDICATORS OF STOCK STATUS FOR BIGEYE TUNA IN THE EASTERN PACIFIC OCEAN

Mark Maunder, Haikun Xu, Carolina Minte-Vera, and Alexandre Aires-da-Silva

## Slide 1

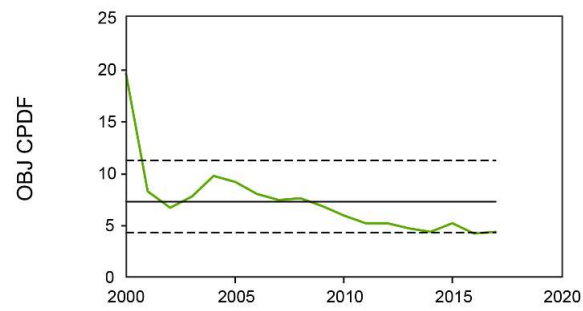
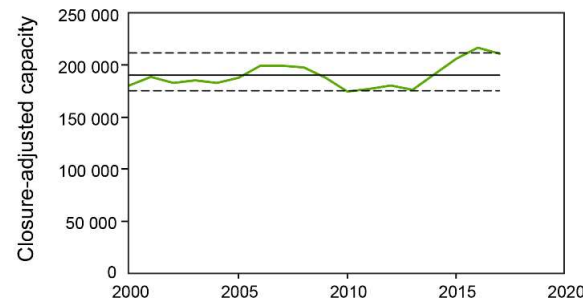
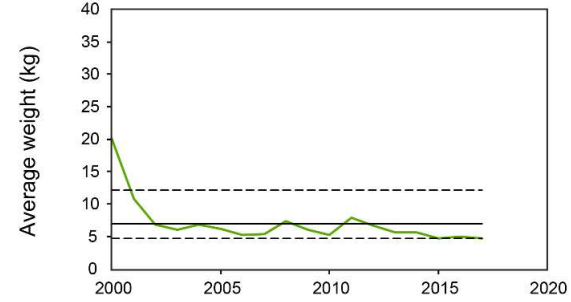
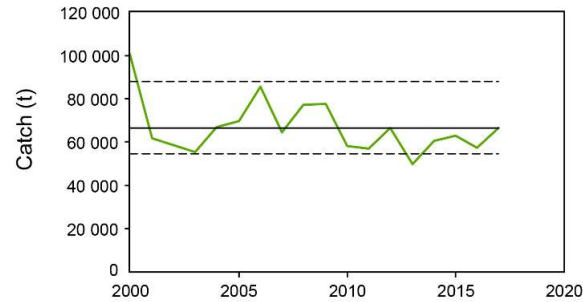
---

**A1** You can use the generic pic for landing page  
Author, 2/27/2018

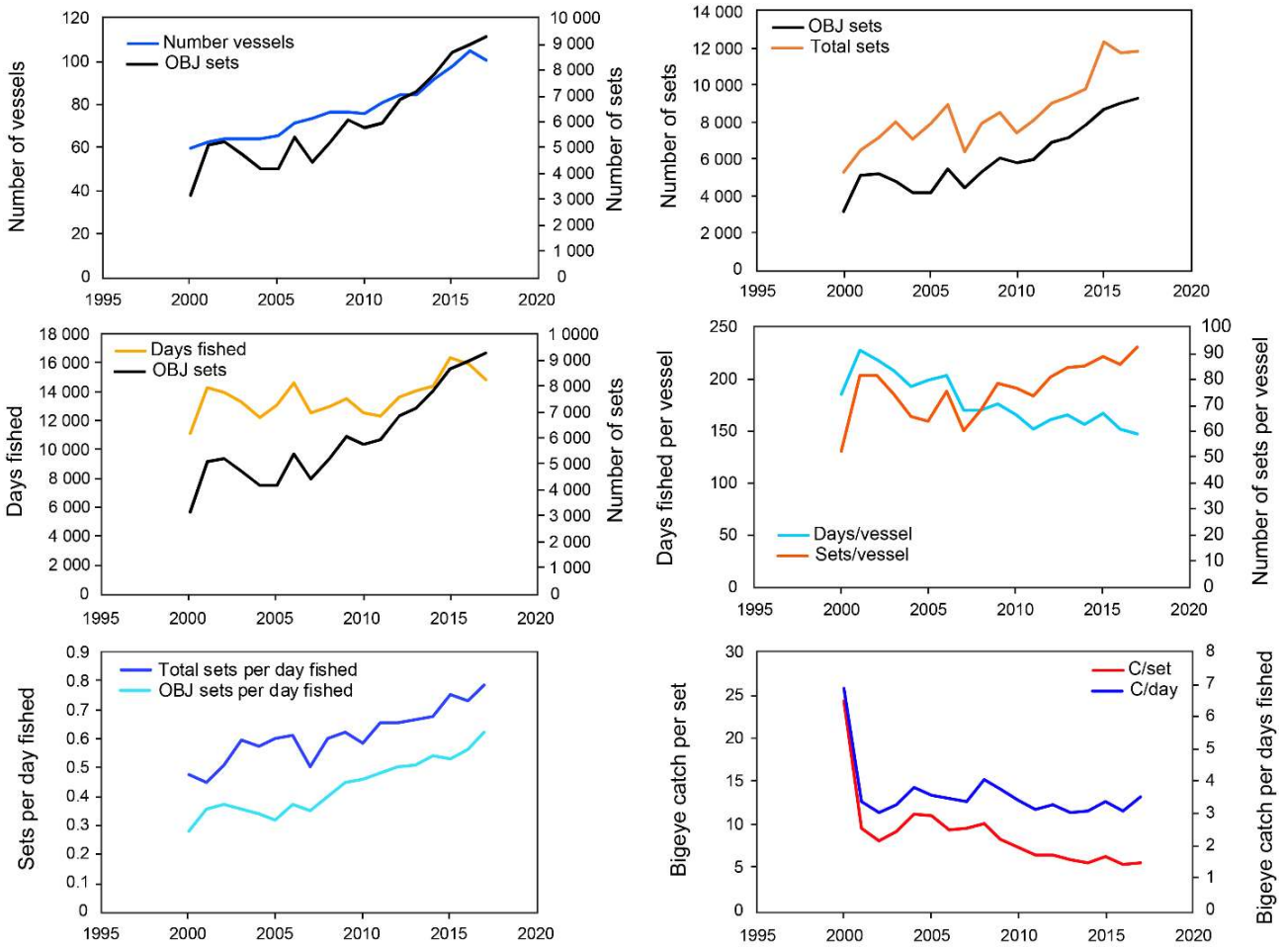
# Outline

- Indicators
  - Based on data (catch, effort, CPUE, mean weight, capacity)
  - Reference levels based on the 5th and 95th percentiles
- Relationship between days fished and the number of sets
- Why are the number of sets increasing?

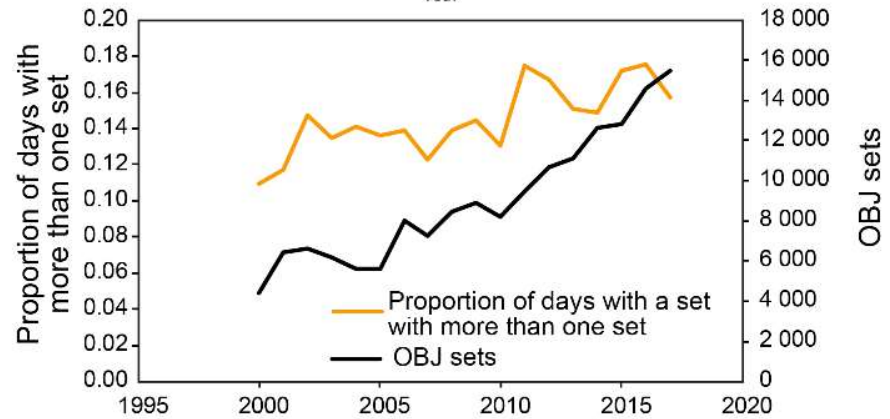
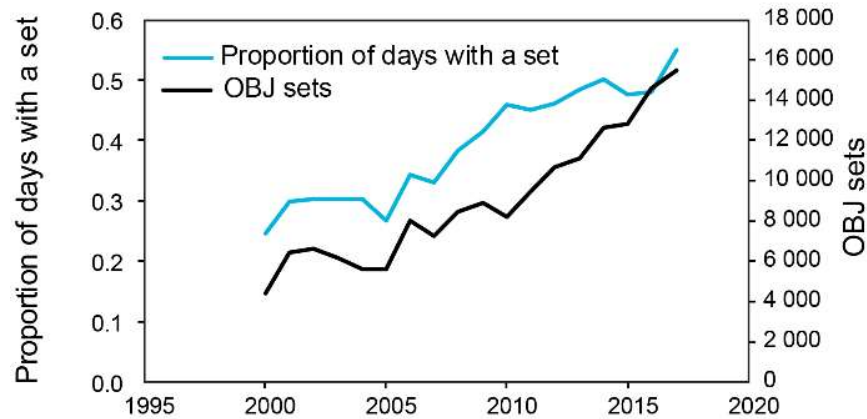
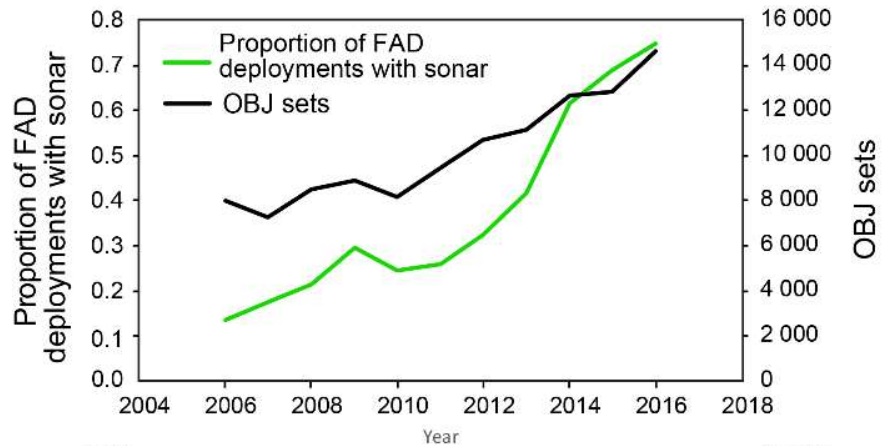
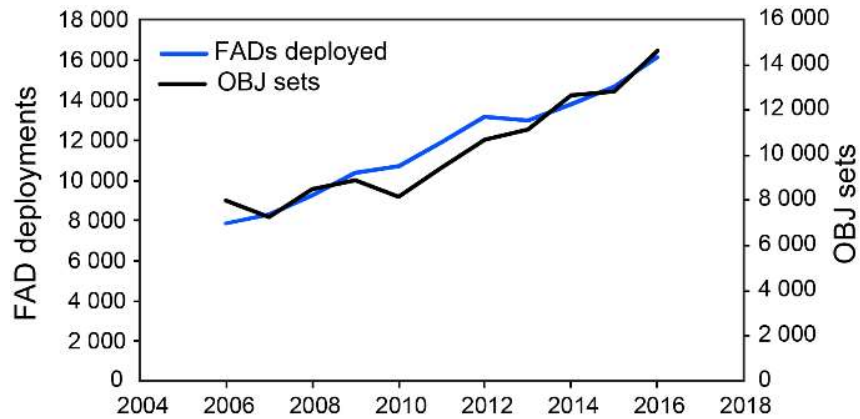
# Indicators



# Relationship between days fished and the number of sets



# Why are the number of sets increasing?



# Conclusions

- Indicators
  - All, except catch, showing strong trends over time
  - All, except catch, at or exceeding their reference levels
  - Indicates increased fishing mortality and reduced abundance
- Relationship between days fished and the number of sets
  - Floating object days fished indicator is probably biased
  - Number of sets is increasing
- Why are the number of sets increasing?
  - Probably due to increasing efficiency
  - More deployments
  - More FADs with sonars



# Questions



© ISSF (2013)

Photo: Jeff Muir