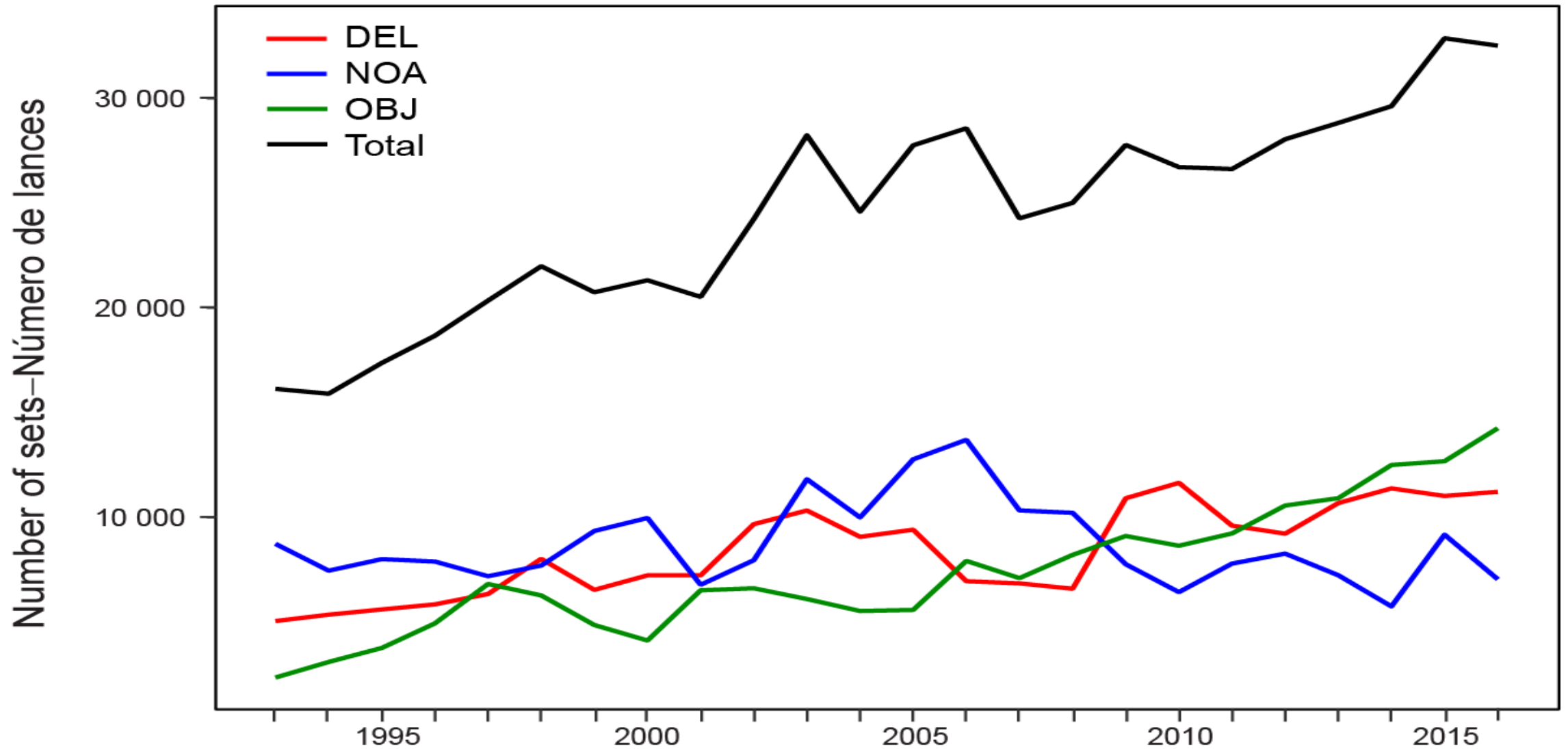


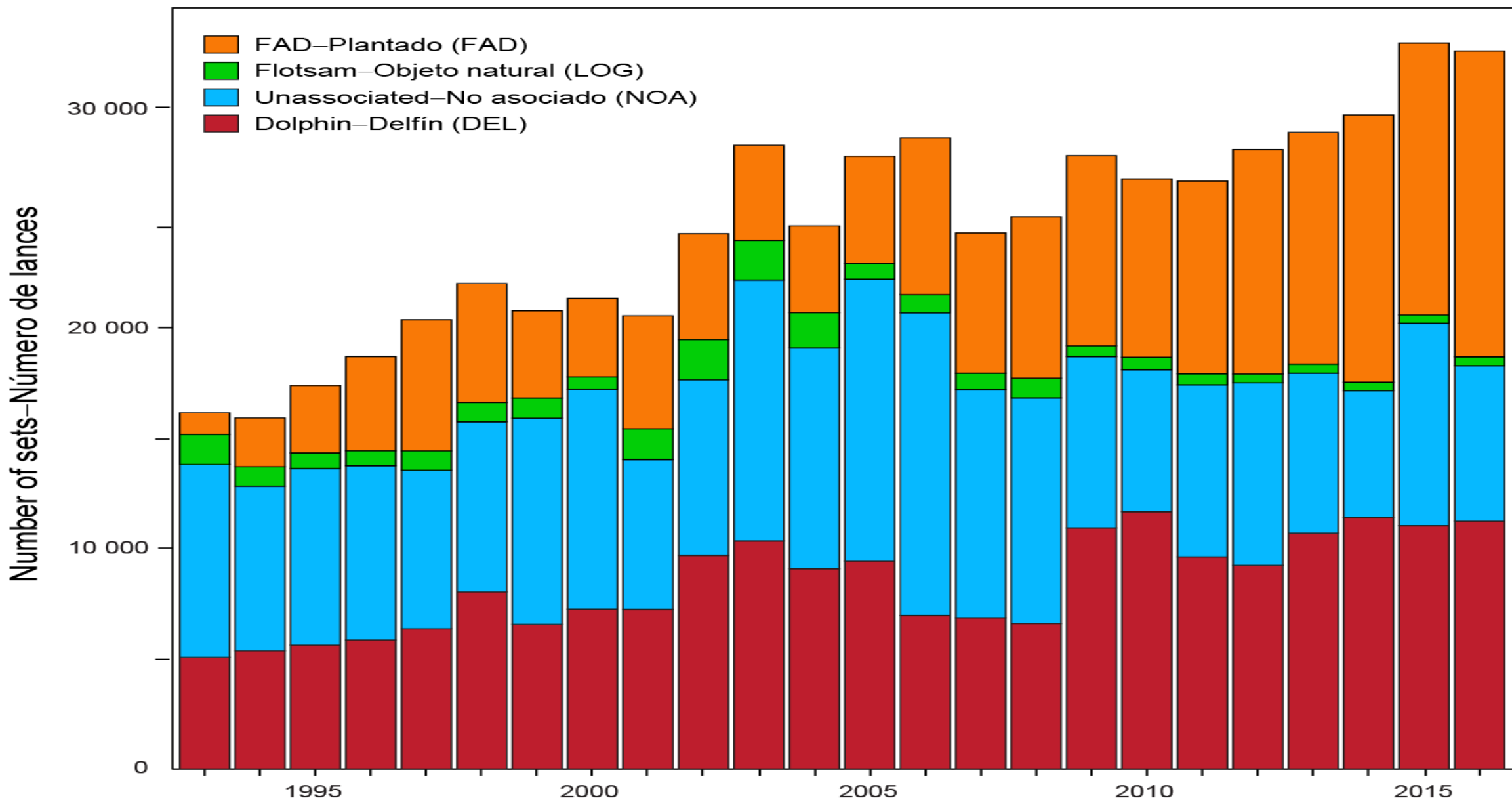
Comisión Interamericana del Atún Tropical
Inter-American Tropical Tuna Commission



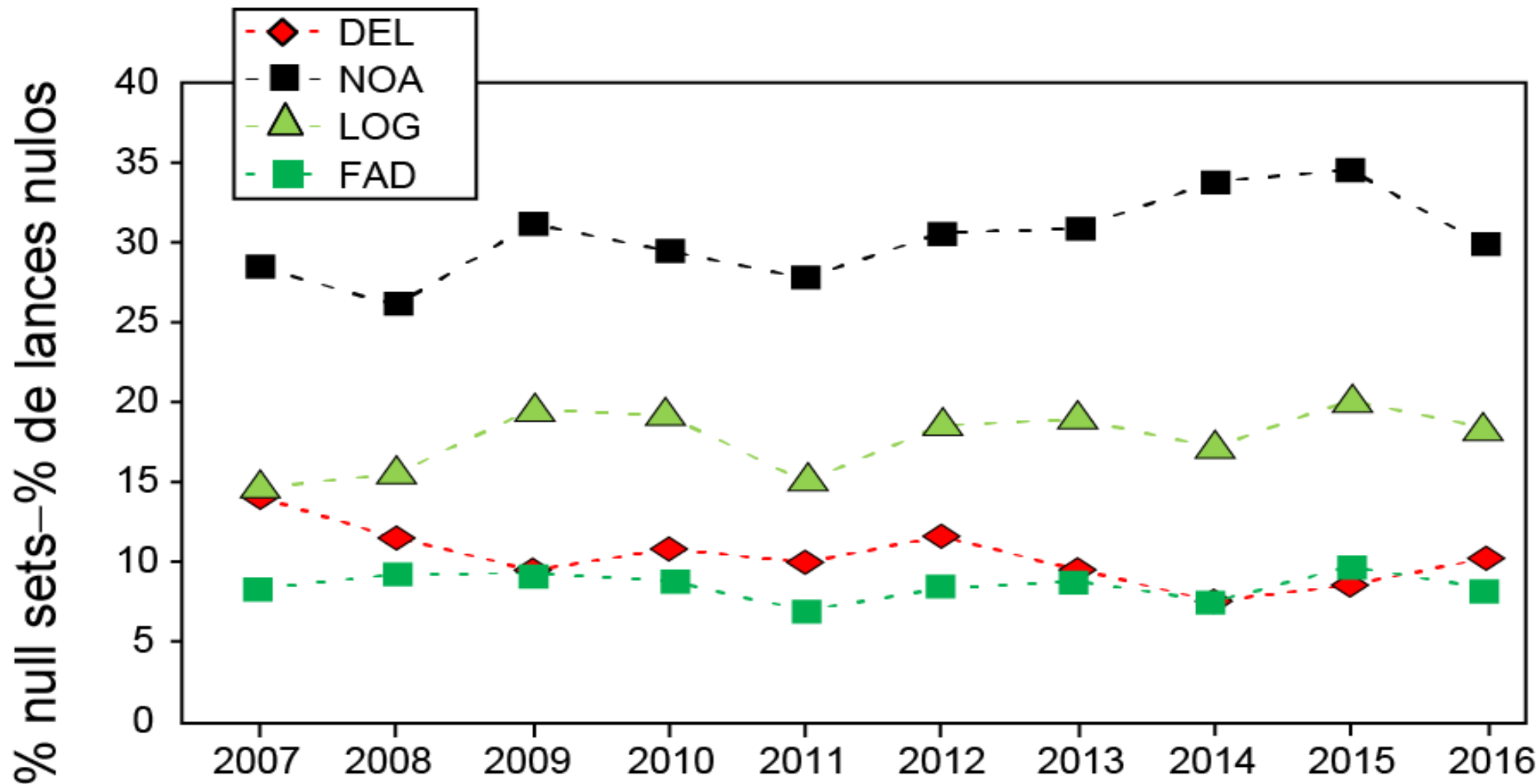
FAD update

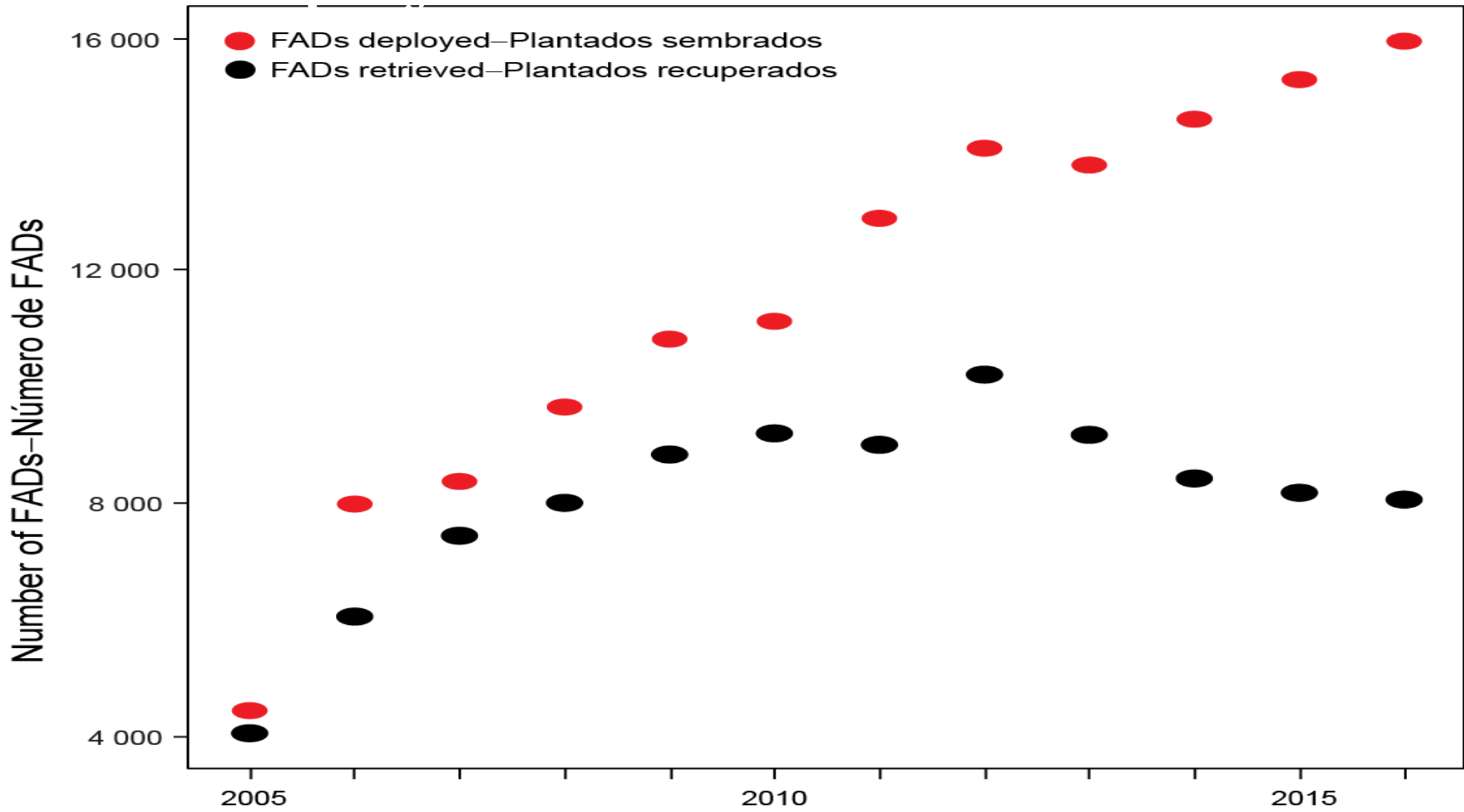
Purse seine fisheries: sets by type



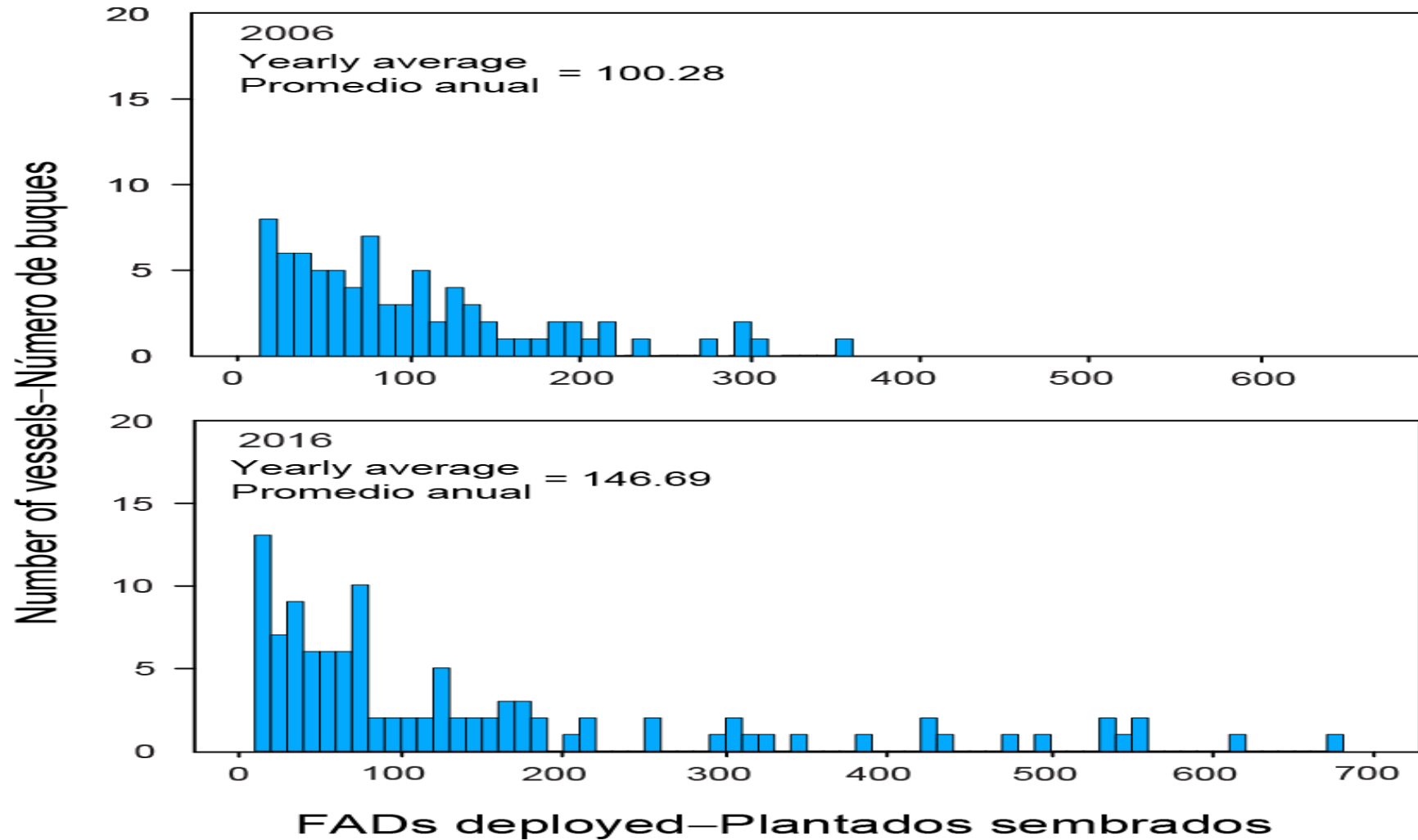


Null sets by type

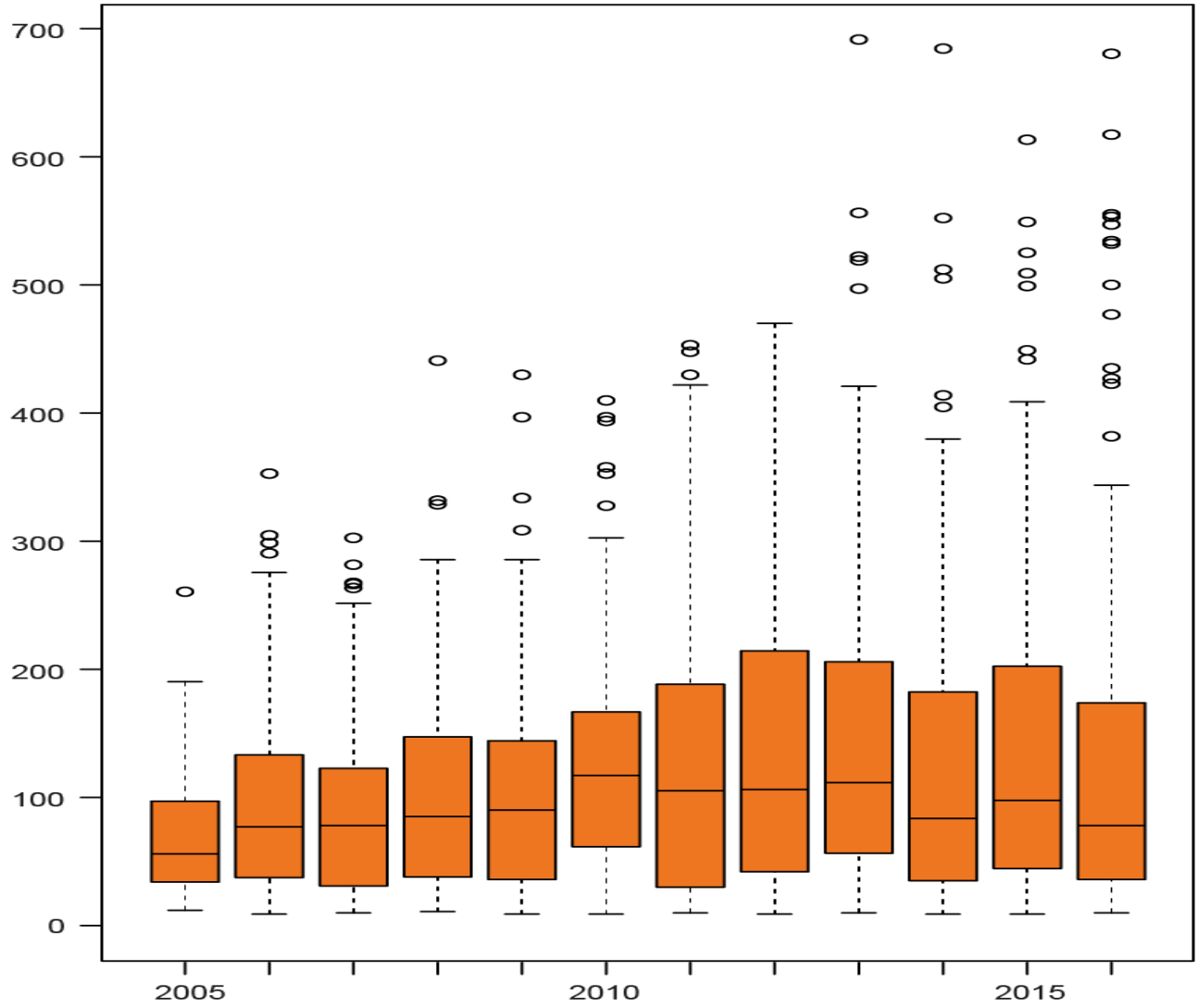




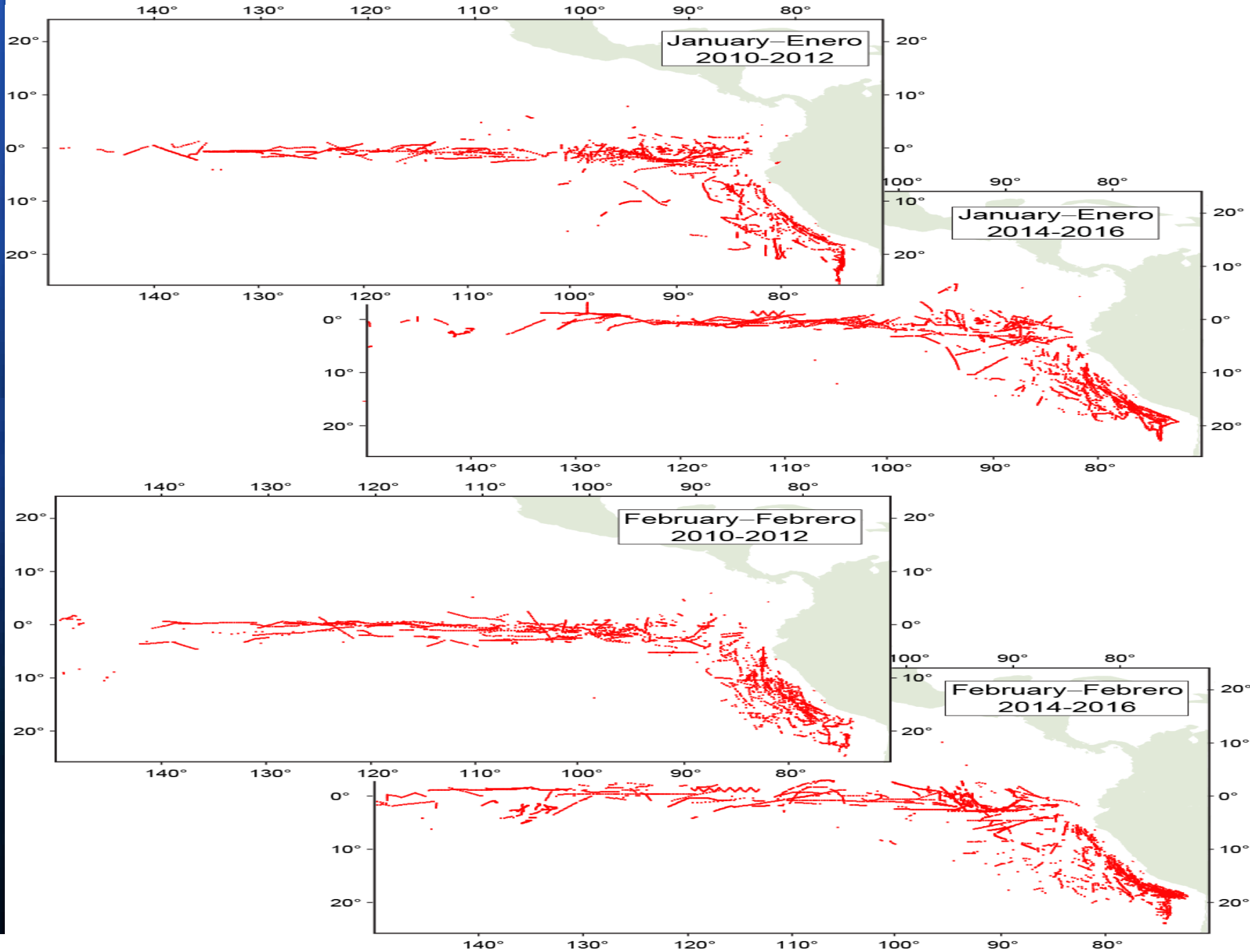
FADs deployed per seiner

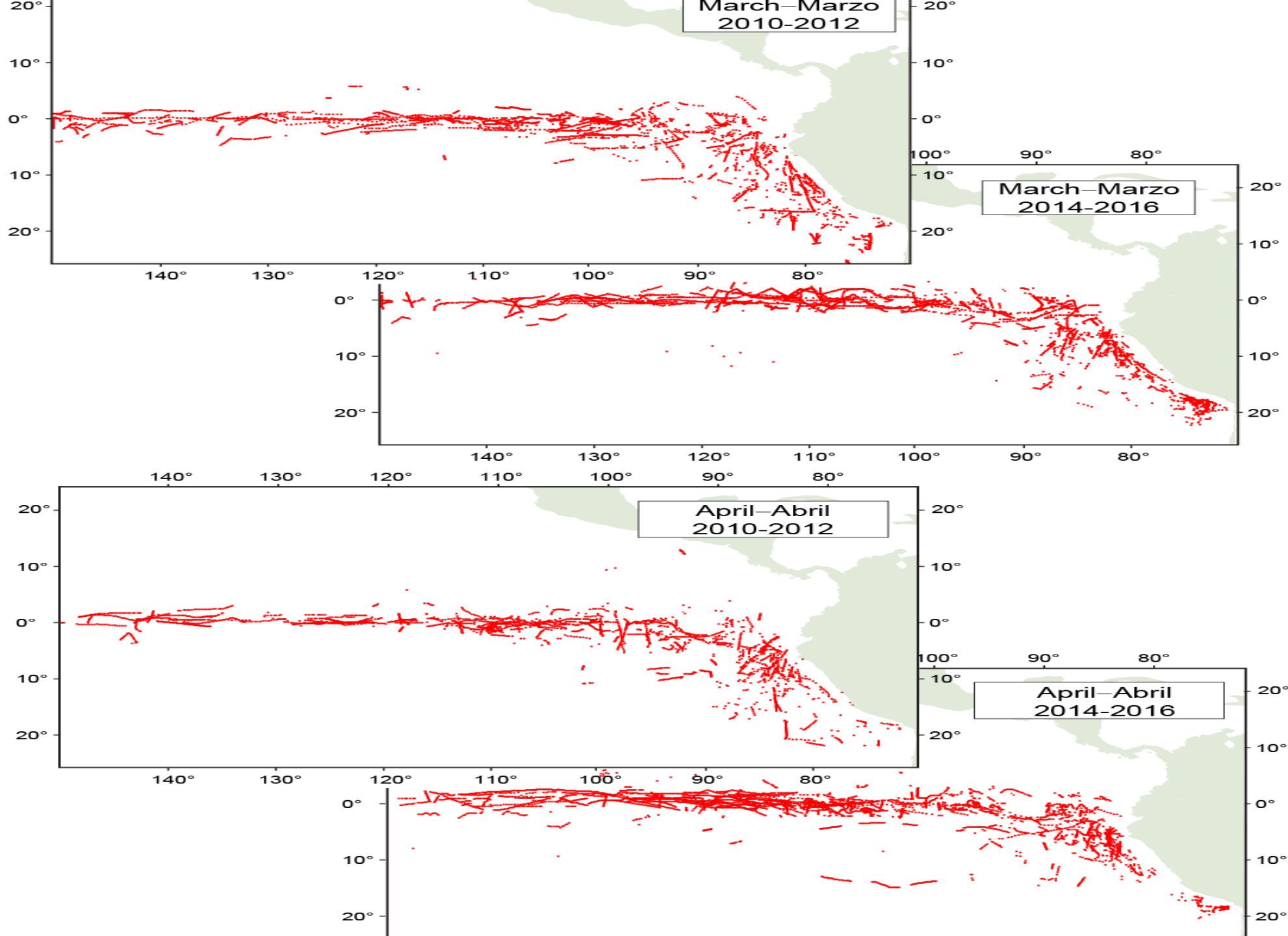


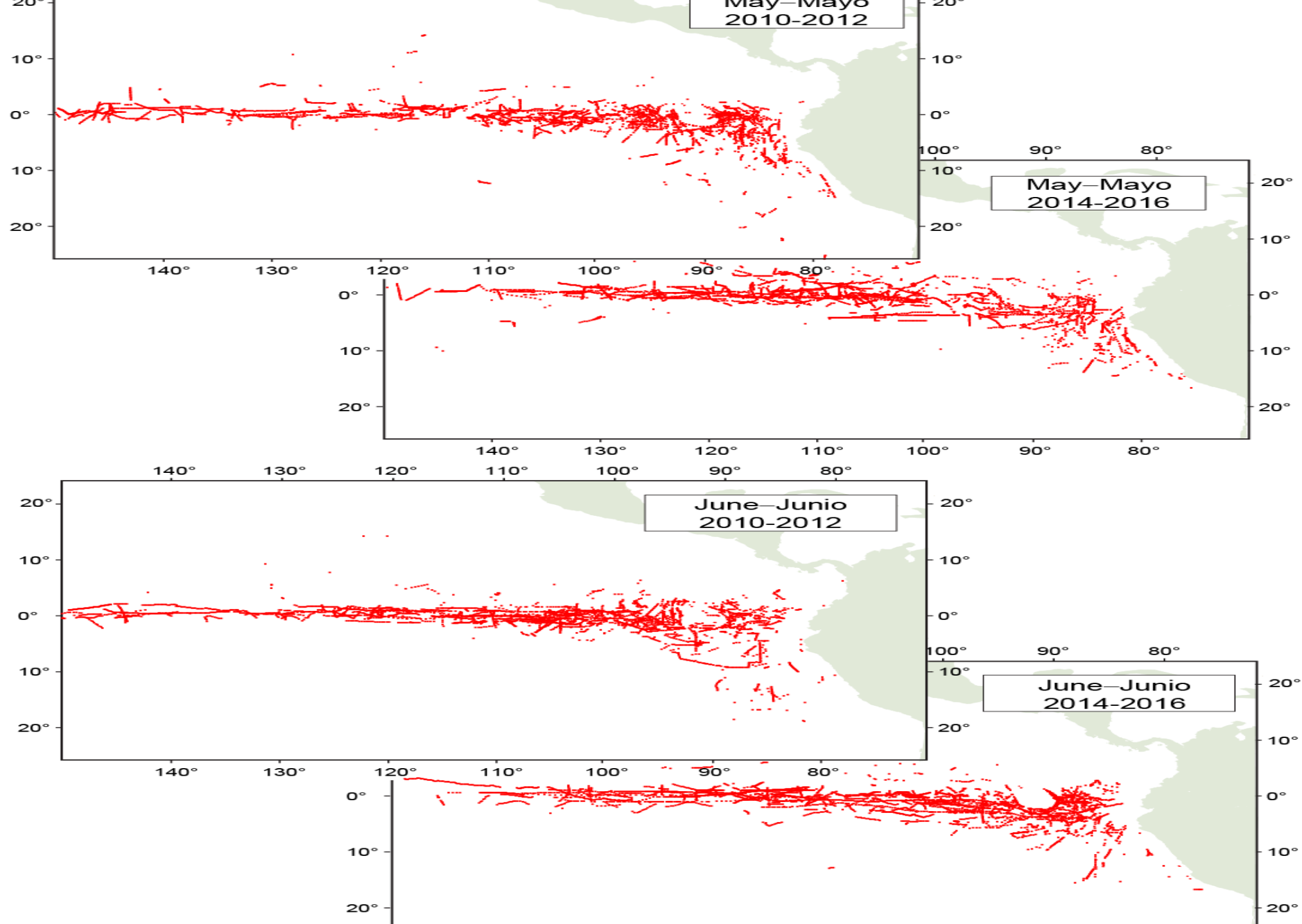
FADs deployed by vessel-Plantados sembrados por buque

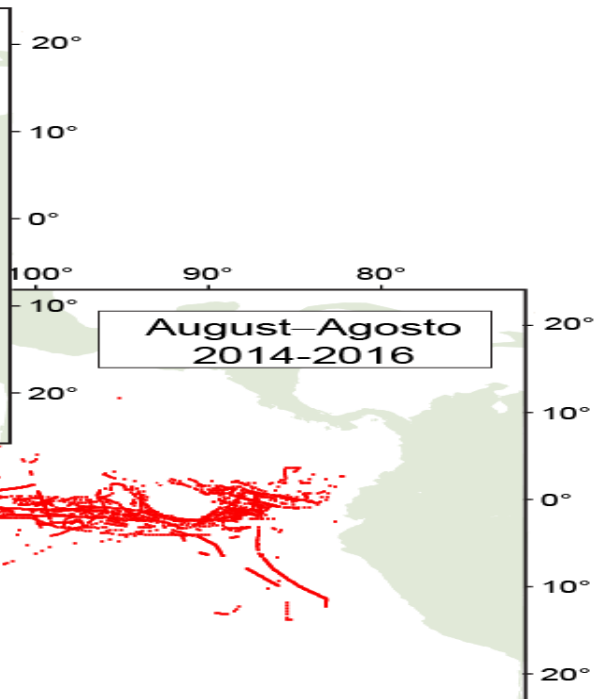
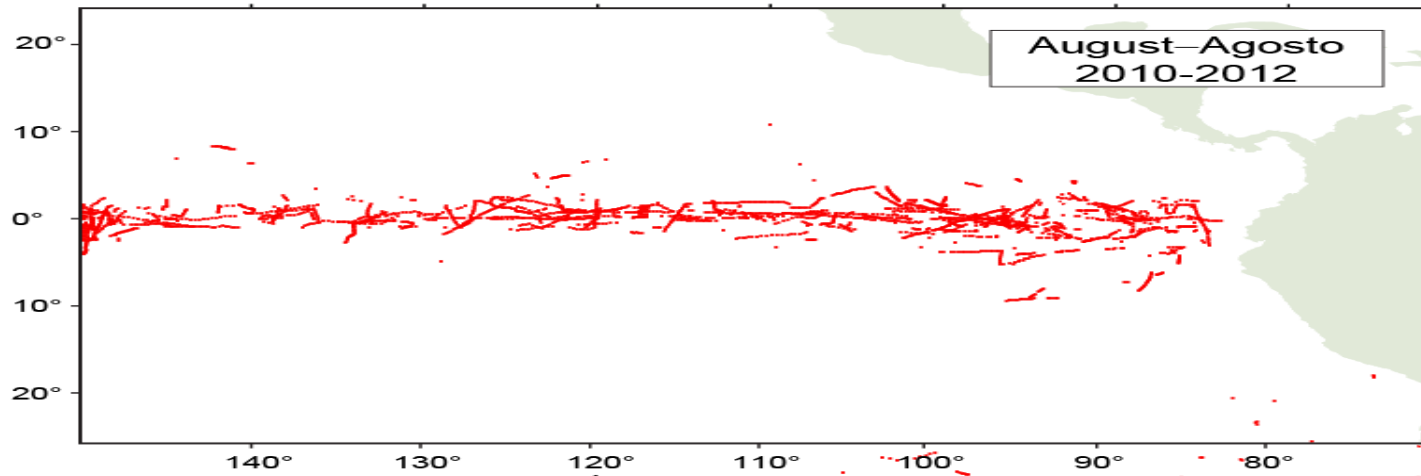
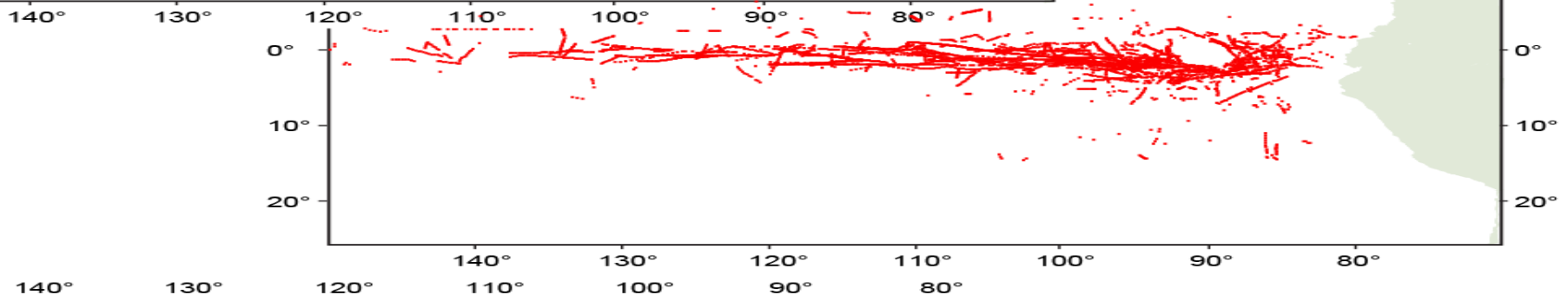
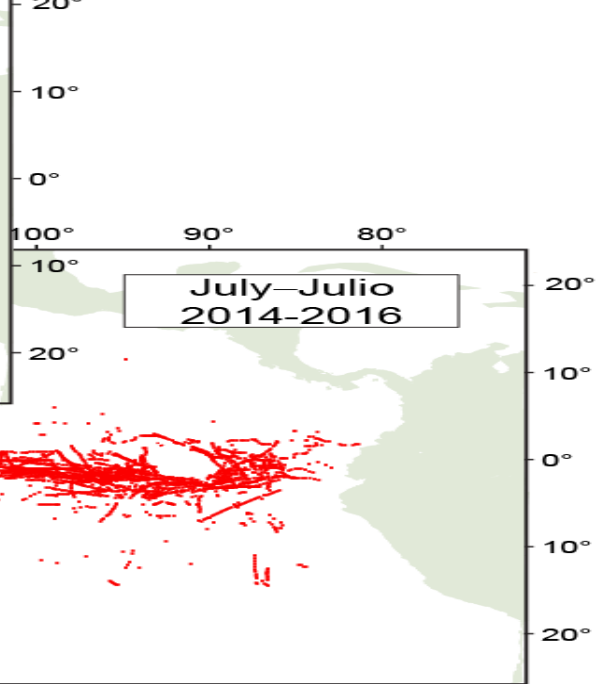
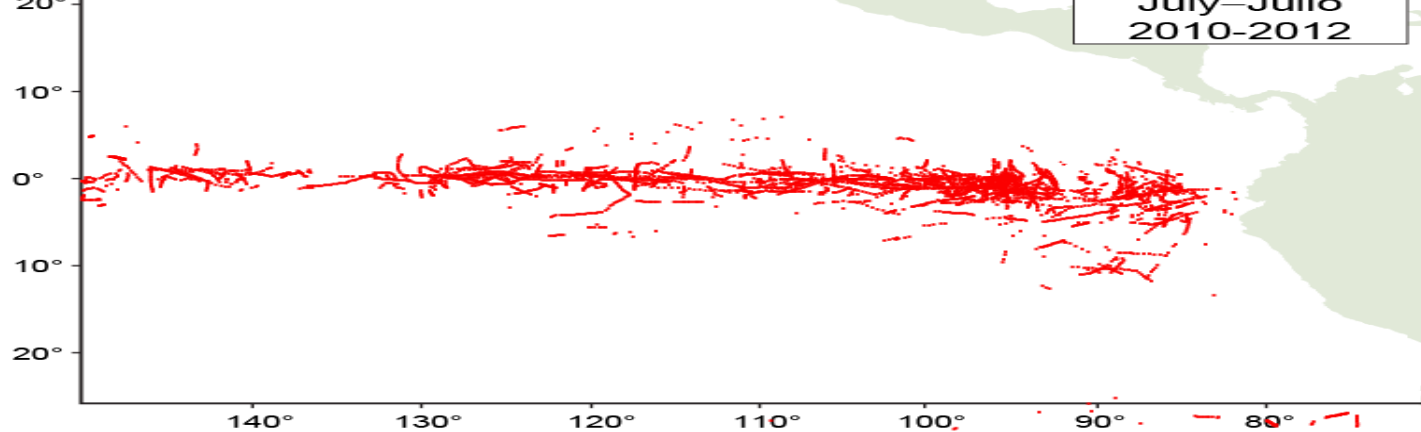


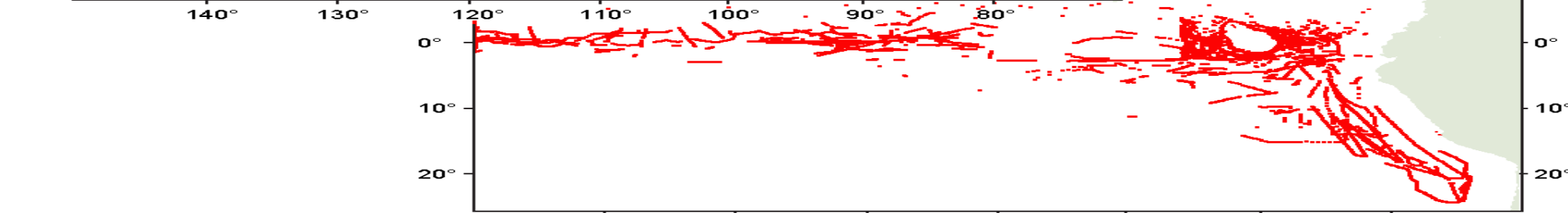
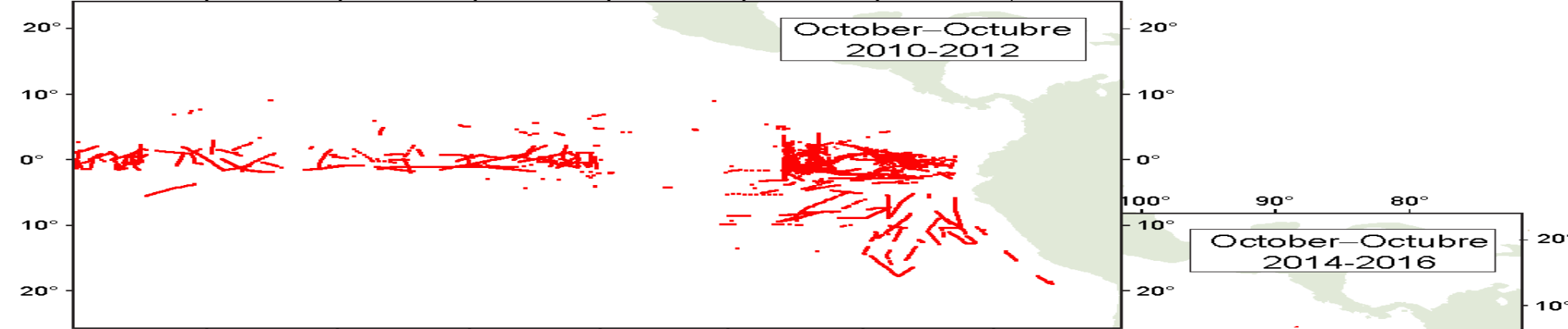
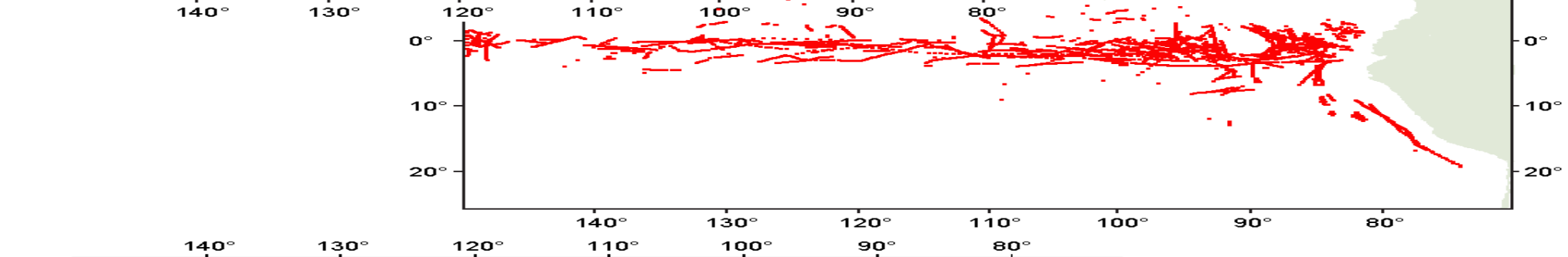
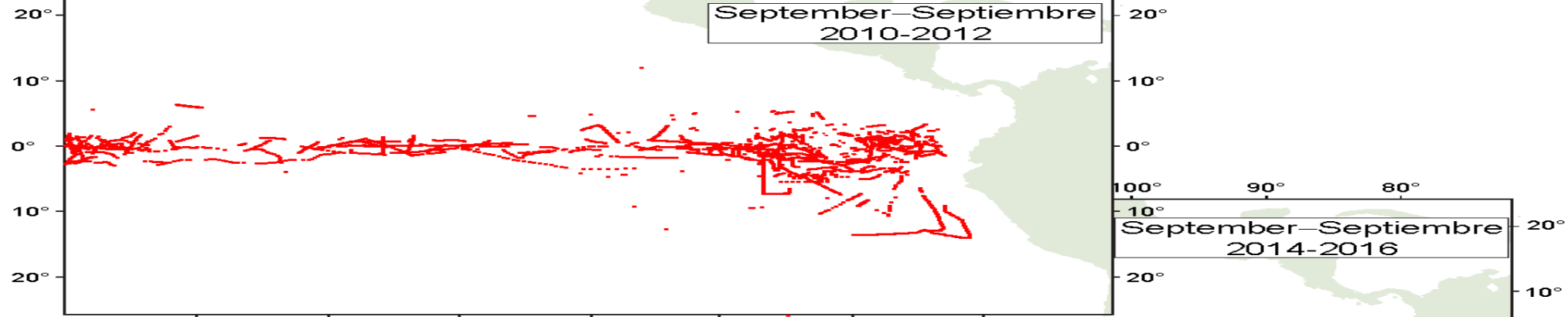
Deployed FADs

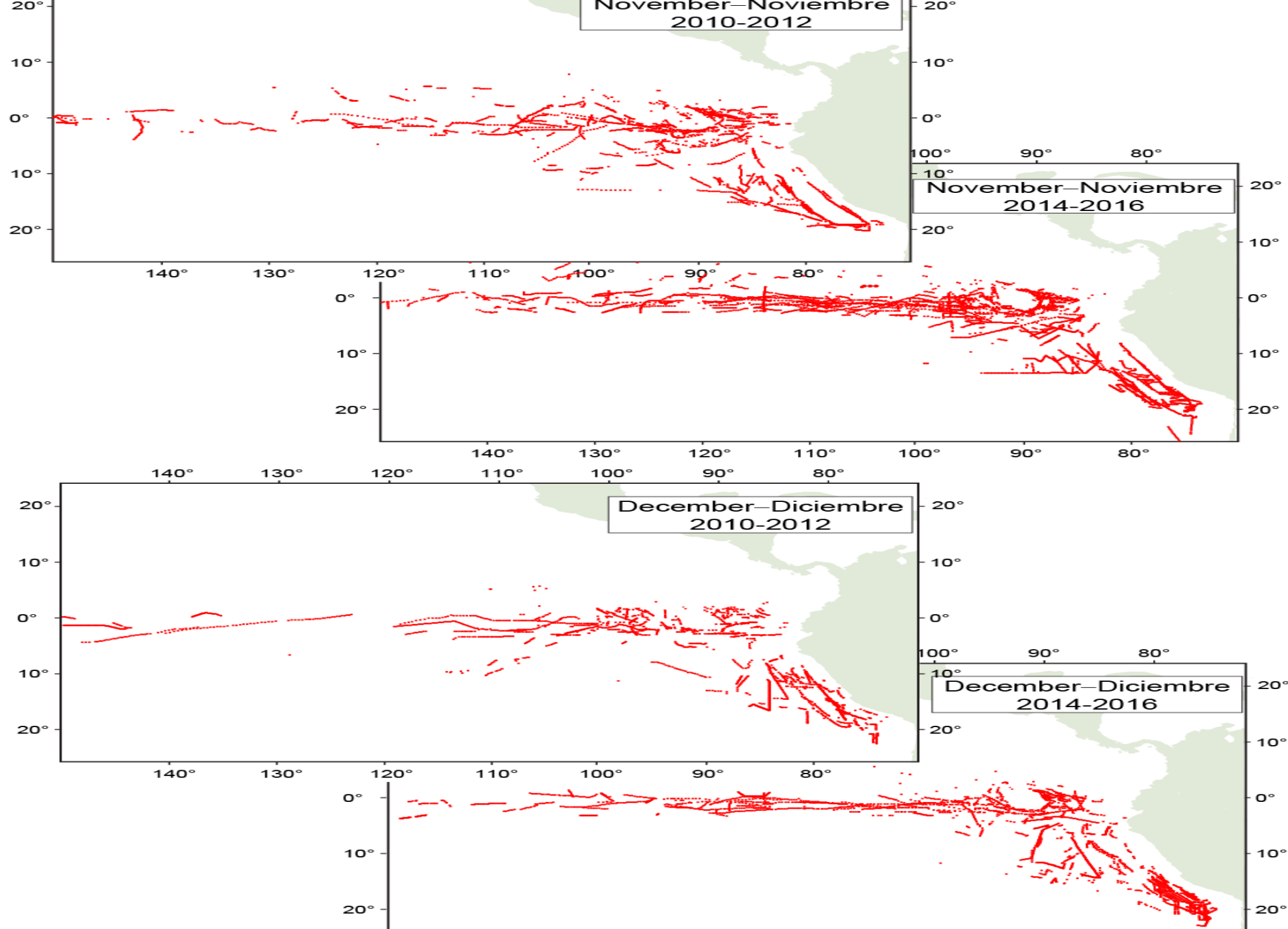




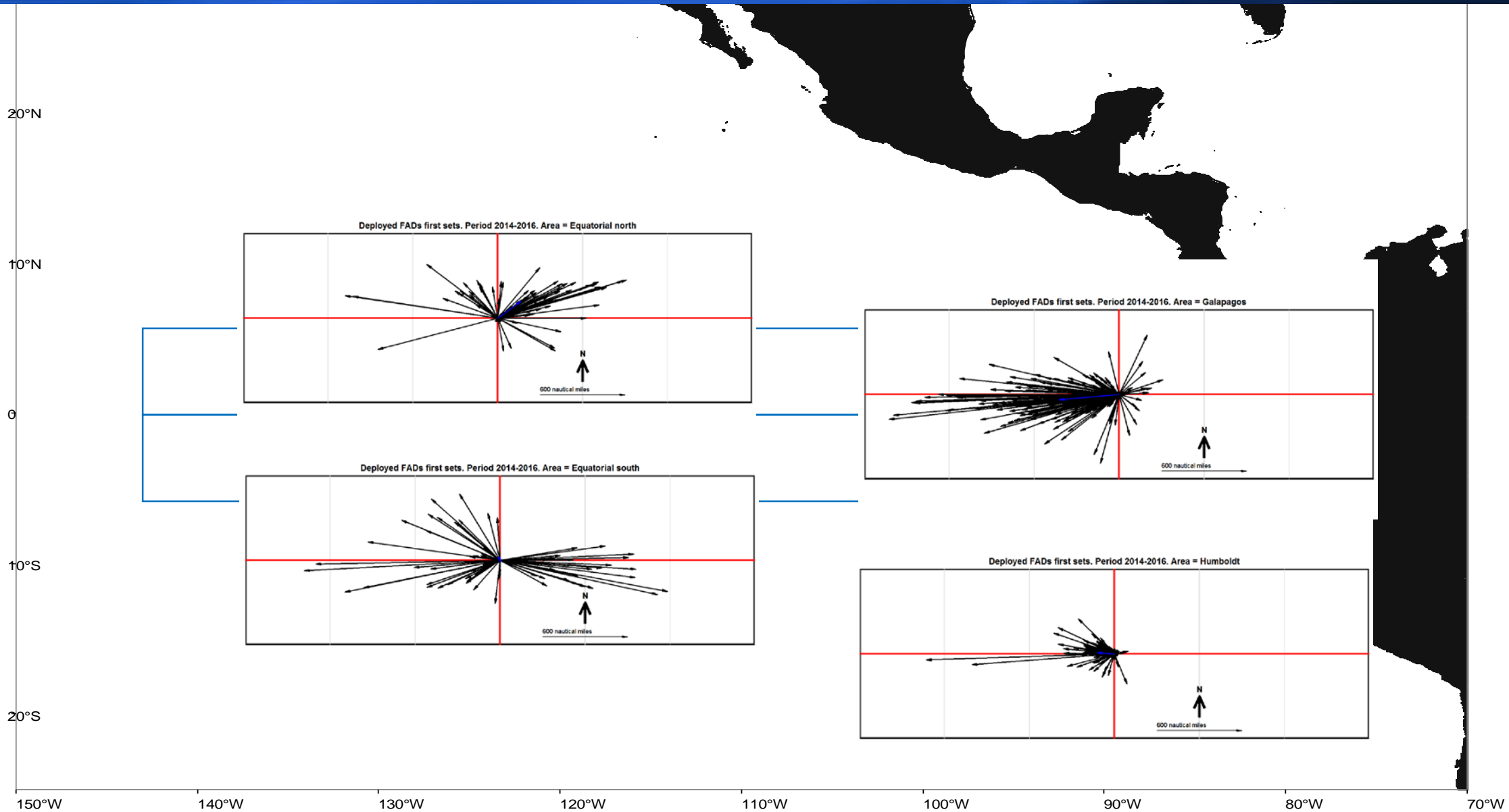




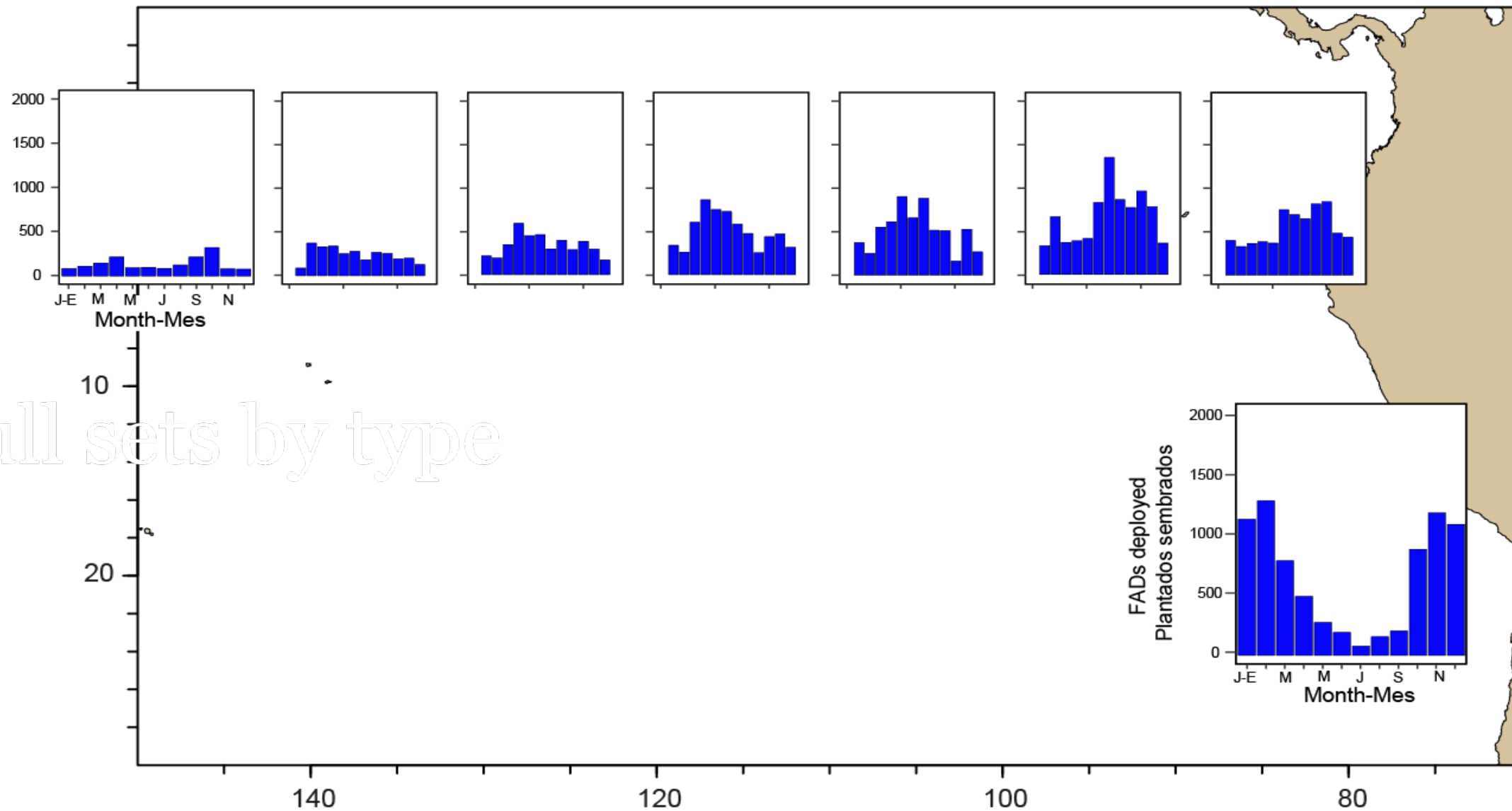


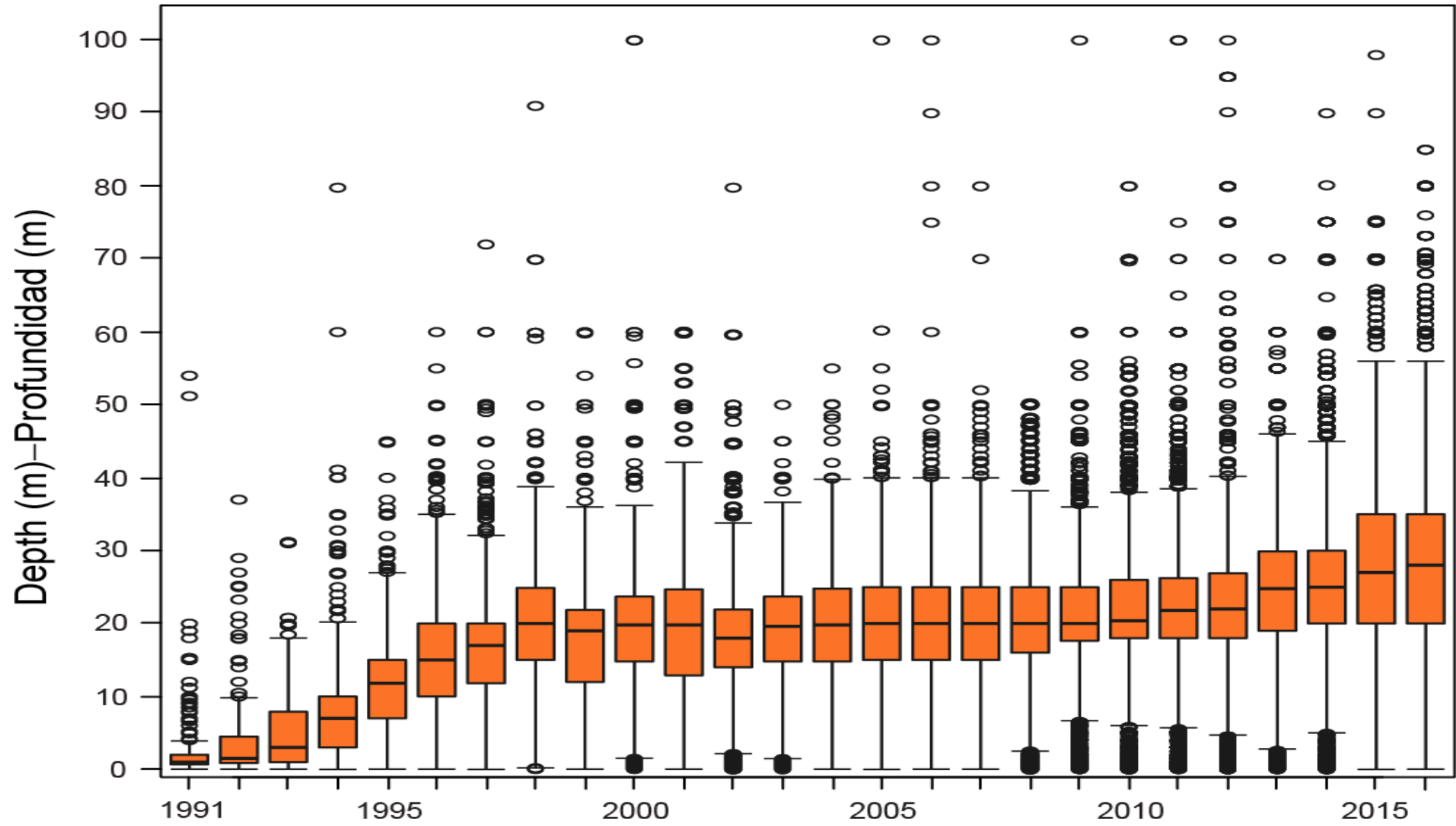


Drifts by region

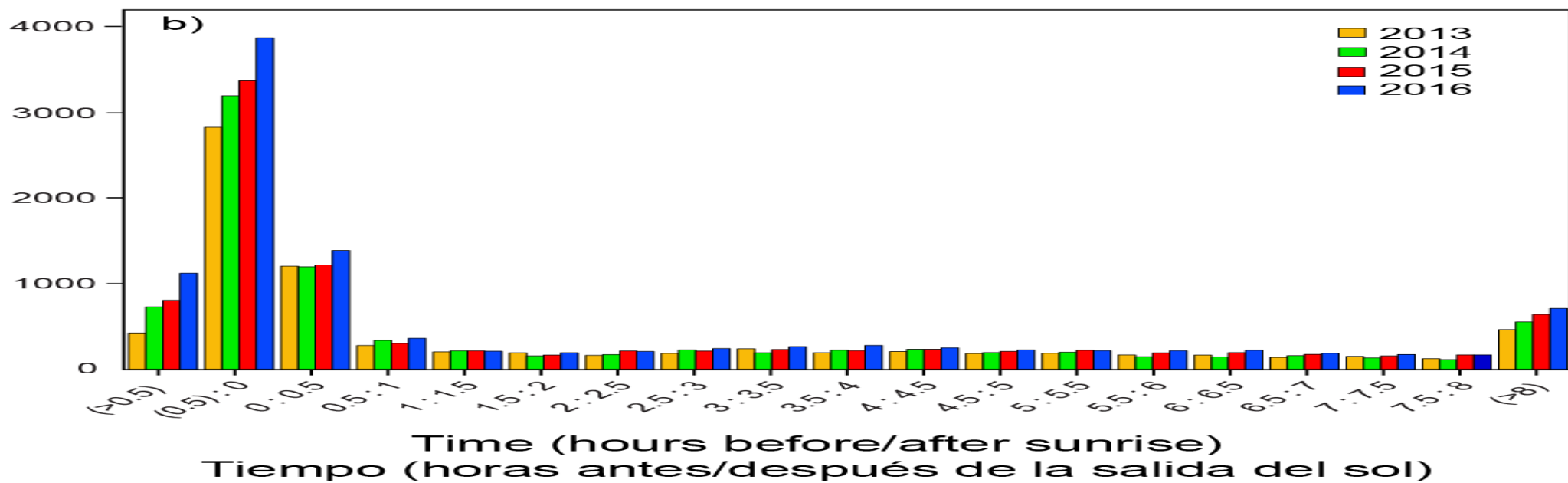
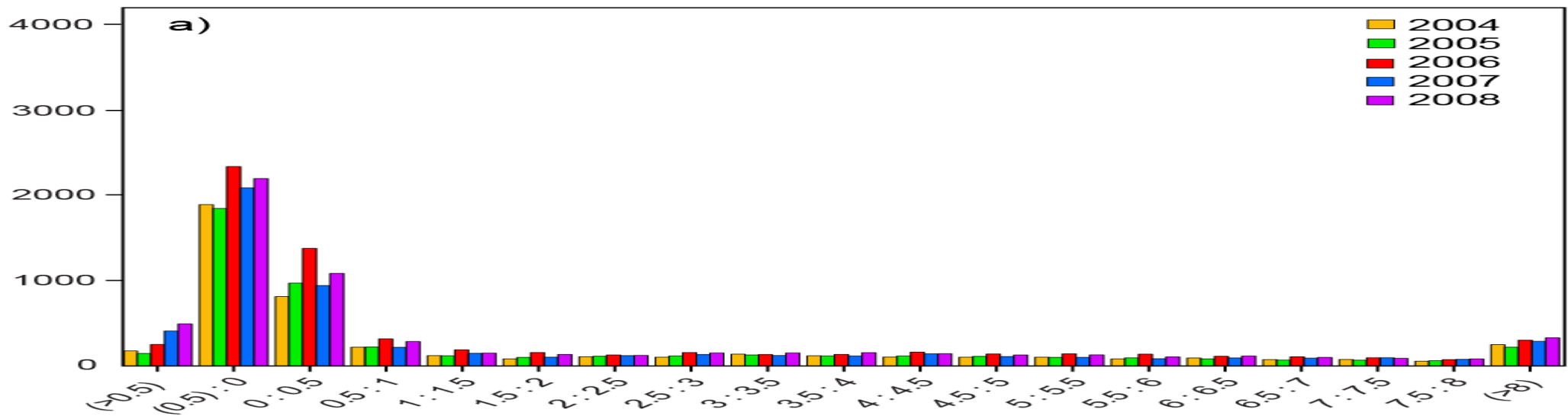


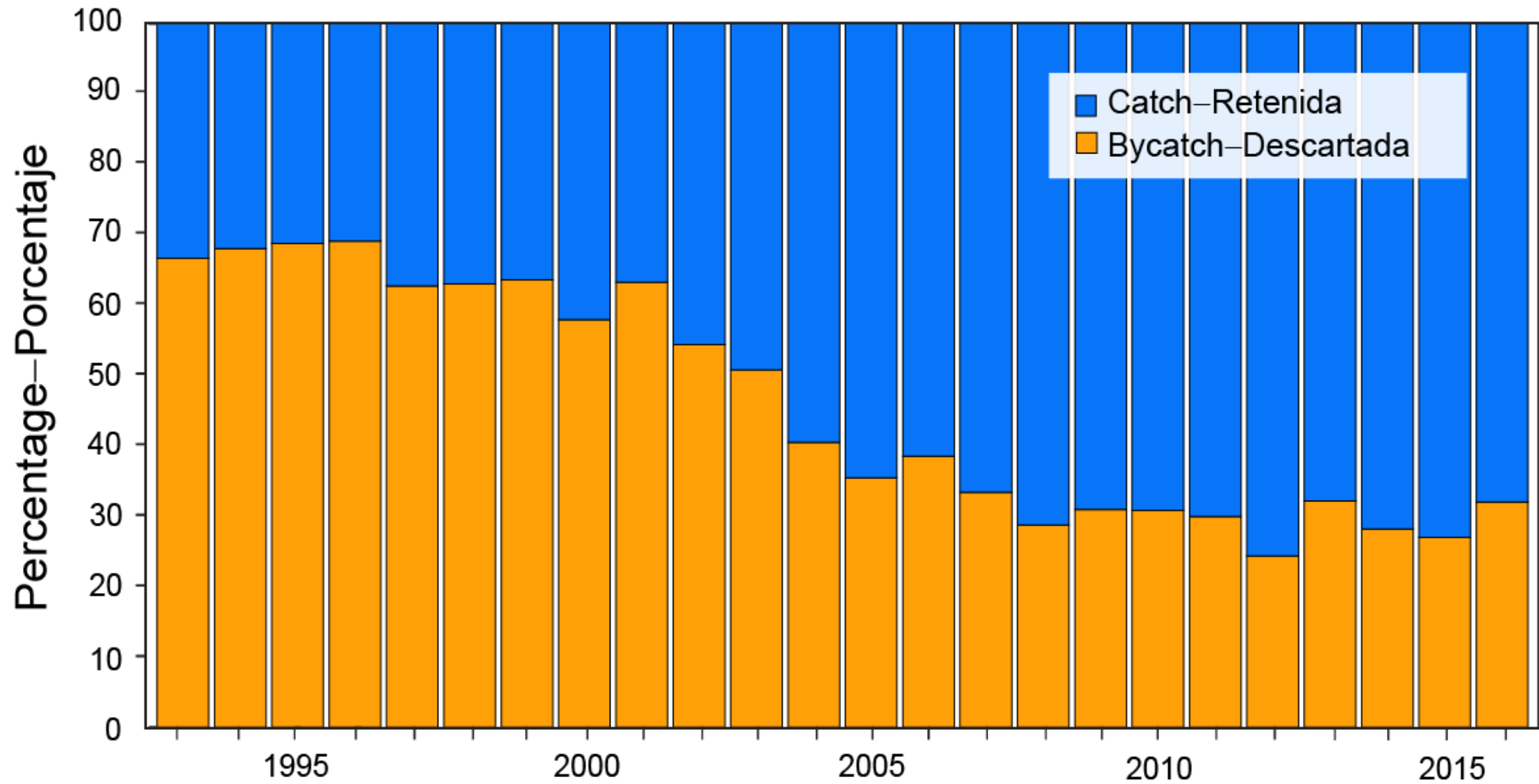
Null sets by type





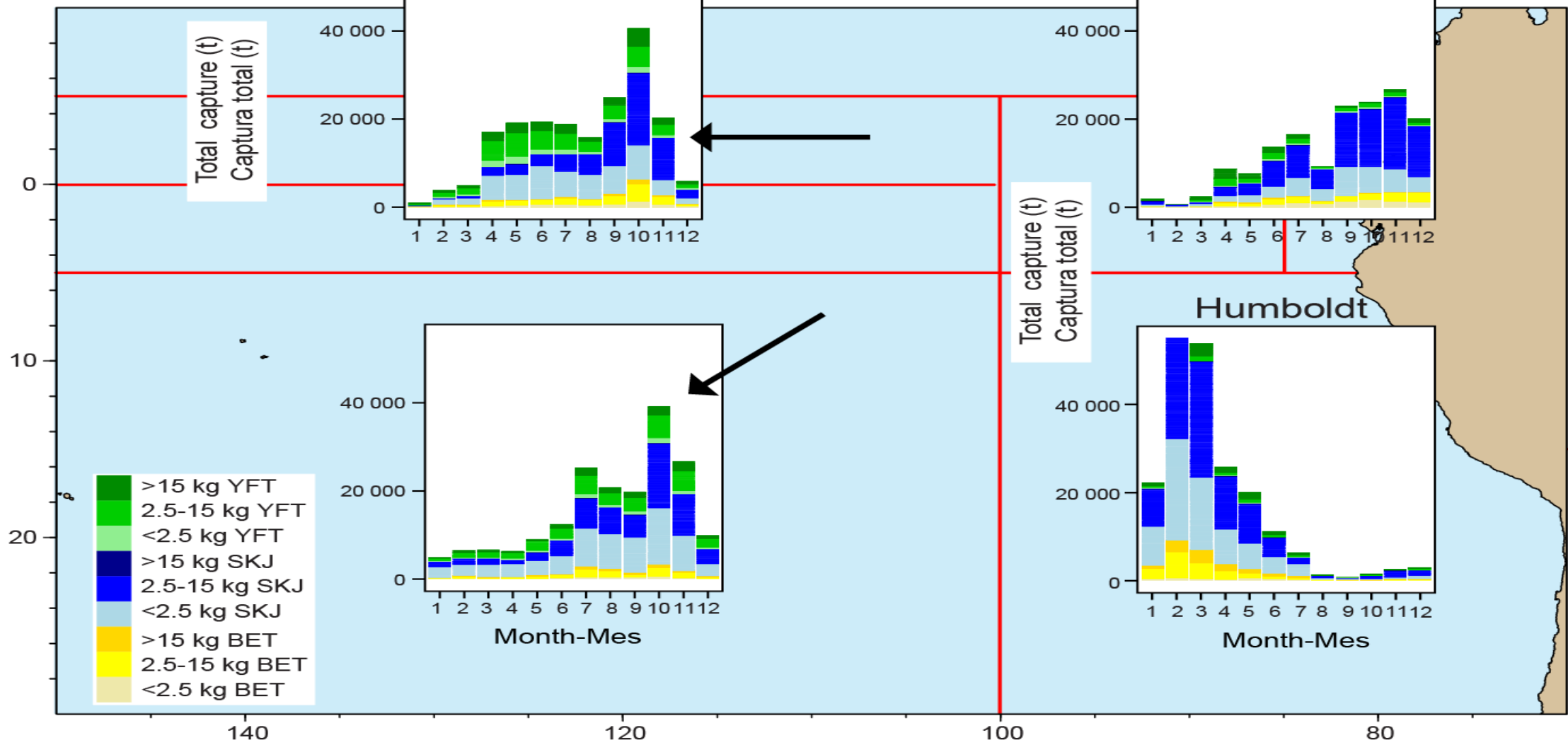
Number of sets - Número de lances





Equatorial-Ecuatorial

Galápagos



Size class 6 only**Estimated
total bycatch
in the EPO**

(except dolphins)

Species	Dolphin	School	Log	All Sets
Sailfish	177	112	2	291
Blue marlin	1	2	44	47
Black marlin	3	0	16	19
Striped marlin	2	0	0	2
Other/Unid billfish	26	9	50	86
Silky shark	287	376	22221	22884
Oceanic whitetip shark	2	13	164	179
Scalloped hammerhead	9	21	241	271
Smooth hammerhead	9	16	360	385
Other/Unid HH shark	5	19	254	278
Other/Unid shark	101	116	2736	2952
Giant manta	8	65	7	80
Spinetail manta	116	18	5	139
Chilean devil ray	25	17	13	55
Smoothtail manta	146	26	18	190
Munk's devil ray	63	236	2	301
Unid Manta/devil rays	228	204	51	483
Pelagic stingray	346	35	60	441
Other/Unid rays	2	0	2	4
Mahi mahi	2	125	49922	50049
Wahoo	3	14	15976	15993
Rainbow runner	37	0	21655	21692
Yellowtail	0	323	10756	11079
Other large fish	121	868	931	1920

All years (1993 – 2016) and reent years

School sets	Avg all years	2007	2008	2009	2010	2011	2012	2013	2014	2015	2016
Silky shark	2,285	2,222	136	158	661	180	85	203	754	2,101	376
Oceanic whitetip	132	0	0	0	0	0	3	1	0	10	13
Scalloped hamm	49	31	38	5	4	76	17	16	23	15	21
Smooth hamm	26	19	4	5	1	14	21	6	2	22	16
Other/Unid HH	94	4	3	0	1	11	45	12	7	8	19
Other/Unid shark	438	509	106	121	46	74	31	91	106	294	116
Total	3,025	2,786	288	289	713	354	202	329	892	2,450	561
Giant manta	111	17	61	11	1,163	9	949	24	9	67	65
Spinetail manta	88	198	246	55	334	104	237	109	87	21	18
Chilean devil ray	28	37	268	21	12	28	94	29	10	25	17
Smoothtail manta	274	58	125	31	122	397	1,432	178	28	41	26
Munk's devil ray	34	29	127	45	48	58	59	55	4	11	236
Unid devil rays	1,236	1,148	164	111	2,222	326	213	121	68	57	204
Total	1,771	1,487	992	274	3,900	922	2,984	516	207	222	566

Dolphin sets	Avg all years	2007	2008	2009	2010	2011	2012	2013	2014	2015	2016
Silky shark	902	94	166	61	253	326	9	24	46	109	287
Oceanic whitetip	67	0	1	1	0	1	0	0	0	1	2
Scalloped ham	7	24	3	6	5	12	3	7	3	2	9
Smooth hamm	6	3	8	0	5	0	3	4	2	4	9
Other/Unid HH	27	0	8	2	3	1	2	4	4	6	5
Other/Unid shark	479	268	86	53	141	111	28	61	128	76	101
Total	1,488	389	272	123	407	450	45	100	183	198	413
Giant manta	16	7	18	3	4	1	11	21	0	38	8
Spinetail manta	81	147	81	237	303	151	27	61	55	304	116
Chilean devil ray	32	52	29	187	122	77	20	24	18	90	25
Smoothtail manta	63	103	45	72	112	26	67	36	73	101	146
Munk's devil ray	16	24	36	6	23	28	4	6	15	72	63
Unid devil rays	348	238	111	326	303	81	48	322	40	160	228
Total	557	571	320	831	867	364	177	470	201	765	586

Floating obj. sets	Avg all years	2007	2008	2009	2010	2011	2012	2013	2014	2015	2016
Silky shark	17,521	9,708	10,838	11,959	13,424	8,494	4,703	7,386	15,599	21,057	22,221
Oceanic whitetip	1,937	70	47	96	44	29	19	31	82	108	164
Scalloped hamm	269	190	132	182	129	190	117	326	356	168	241
Smooth hamm	266	178	126	238	169	215	165	514	422	464	360
Other/Unid HH	442	25	87	70	30	81	54	169	341	152	254
Other/Unid shark	2,317	797	879	471	1,224	1,408	684	886	1,894	2,287	2,736
Total	22,753	10,967	12,109	13,016	15,020	10,417	5,743	9,312	18,695	24,236	25,976
Giant manta	4	5	3	1	2	5	5	1	7	1	7
Spinetail manta	19	32	30	17	22	18	48	18	180	45	5
Chilean devil ray	5	24	9	2	7	8	7	6	5	11	13
Smoothtail manta	13	14	13	22	39	6	15	23	21	14	18
Munk's devil ray	3	2	8	9	1	11	3	6	6	6	2
Unid devil rays	73	48	53	40	100	40	26	36	43	28	51
Total	117	125	116	91	171	88	104	90	263	105	96

All sets	Avg all years	2007	2008	2009	2010	2011	2012	2013	2014	2015	2016
Silky shark	20,708	12,023	11,141	12,178	14,338	8,999	4,797	7,613	16,399	23,267	22,884
Oceanic whitetip	2,136	70	48	97	44	30	22	32	82	119	179
Scalloped hamm	326	246	173	193	138	278	137	349	382	185	271
Smooth hamm	298	200	138	243	174	229	189	524	426	490	385
Other/Unid HH	563	29	98	72	34	93	101	185	352	166	278
Other/Unid shark	3,235	1,574	1,071	645	1,411	1,593	743	1,038	2,128	2,657	2,952
Total	27,266	14,142	12,669	13,429	16,140	11,222	5,989	9,741	19,770	26,884	26,949
Giant manta	132	29	82	15	1,169	15	965	46	16	106	80
Spinetail manta	189	377	357	309	659	273	312	188	322	370	139
Chilean devil ray	65	113	306	210	141	113	121	59	33	126	55
Smoothtail manta	351	175	183	125	273	429	1,514	238	123	156	190
Munk's devil ray	52	55	171	60	72	97	66	67	25	89	301
Unid devil rays	1,657	1,435	328	477	2,625	447	287	479	151	245	483
Total	2,445	2,184	1,427	1,195	4,938	1,374	3,265	1,077	671	1,092	1,248