

A1



Comisión Interamericana del Atún Tropical Inter-American Tropical Tuna Commission



STOCK STATUS INDICATORS (SSIs) FOR TROPICAL TUNAS IN THE EASTERN PACIFIC OCEAN (SAC-11-05)

IATTC Staff

Document SAC-11-05

11th Meeting of the Scientific Advisory Committee – San Diego, California (USA)

11-15 May

Postponed until a later date to be determined

Slide 1

A1 You can use the generic pic for landing page
Author, 2/27/2018

Outline

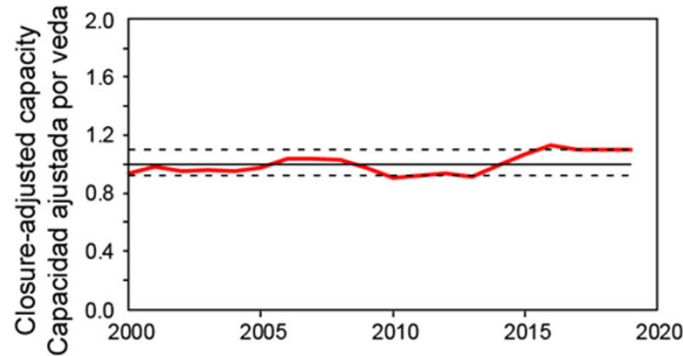
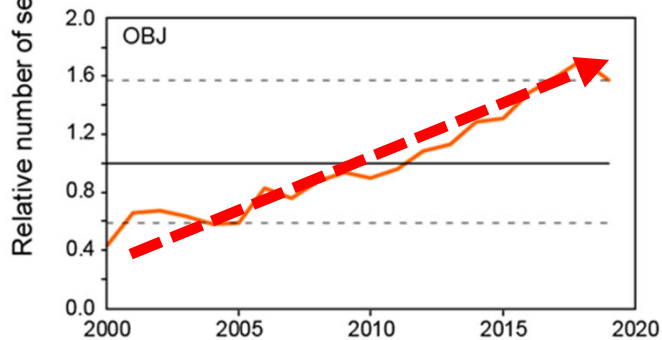
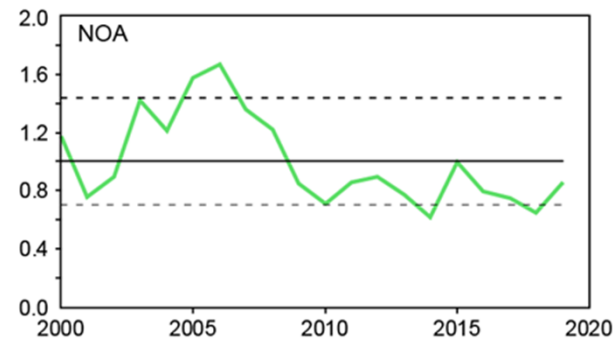
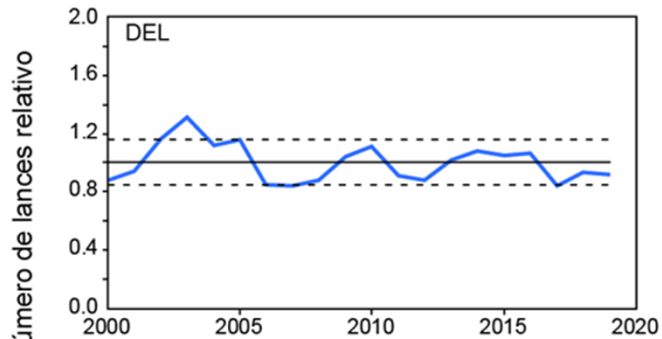
- Introduction
- Purse seine based indicators
- Longline based indicators
- Summary

Introduction

- Data: Purse-seine and longline
- Species: Yellowfin, bigeye, and skipjack
- Purse-seine based indicators revised to mitigate bias due to allocation of fishing effort among purse-seine set types
- New SSIs:
 - Catch, effort, CPUE, and average length
 - Begin in 2000
 - First year of purse seine species composition sampling
 - After the major offshore expansion of the floating-object fishery
 - Reference levels set at the 10% and 90% percentiles.

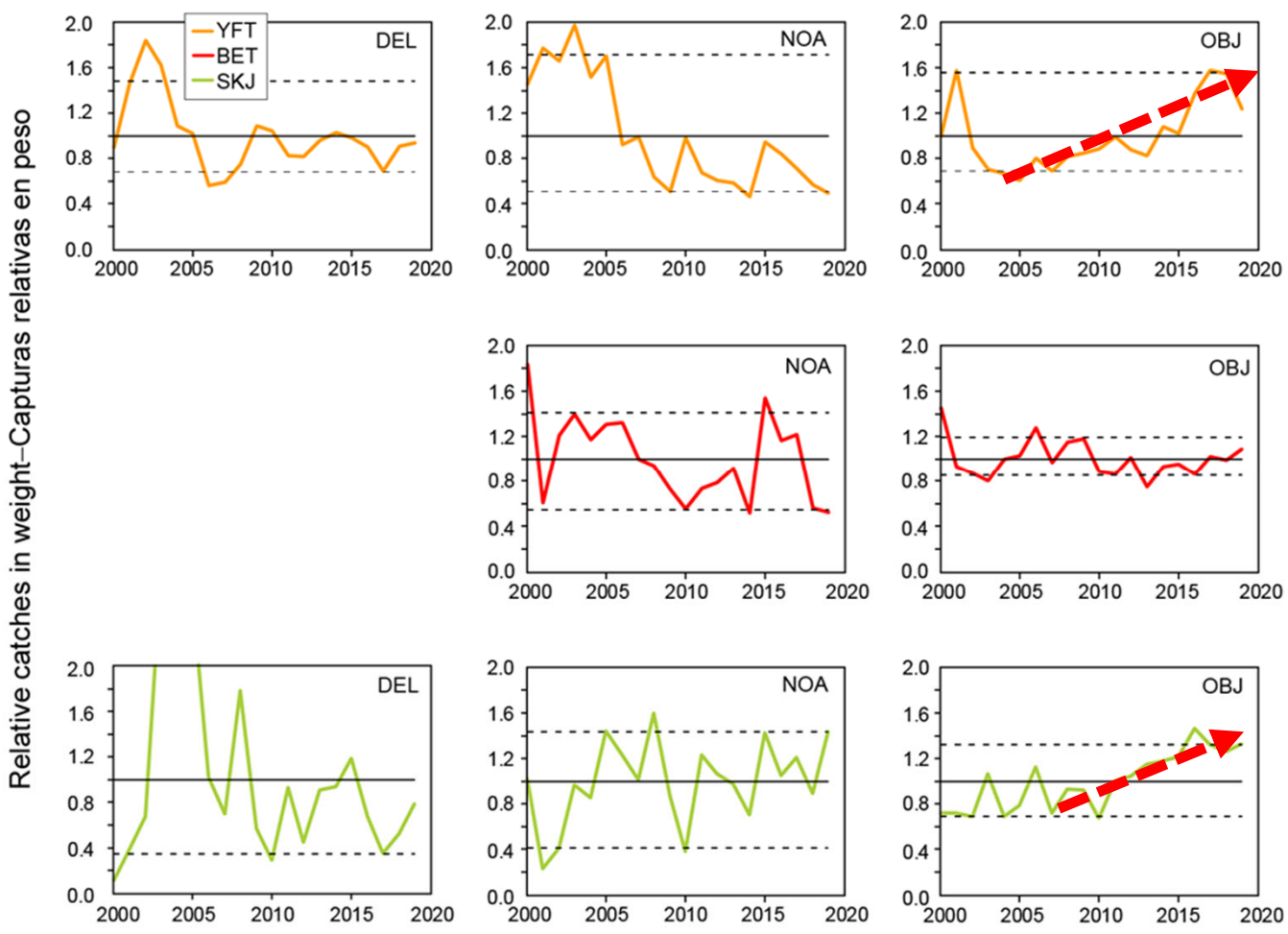


Purse seine: Number of sets by set type



- Constantly increasing number of floating object sets

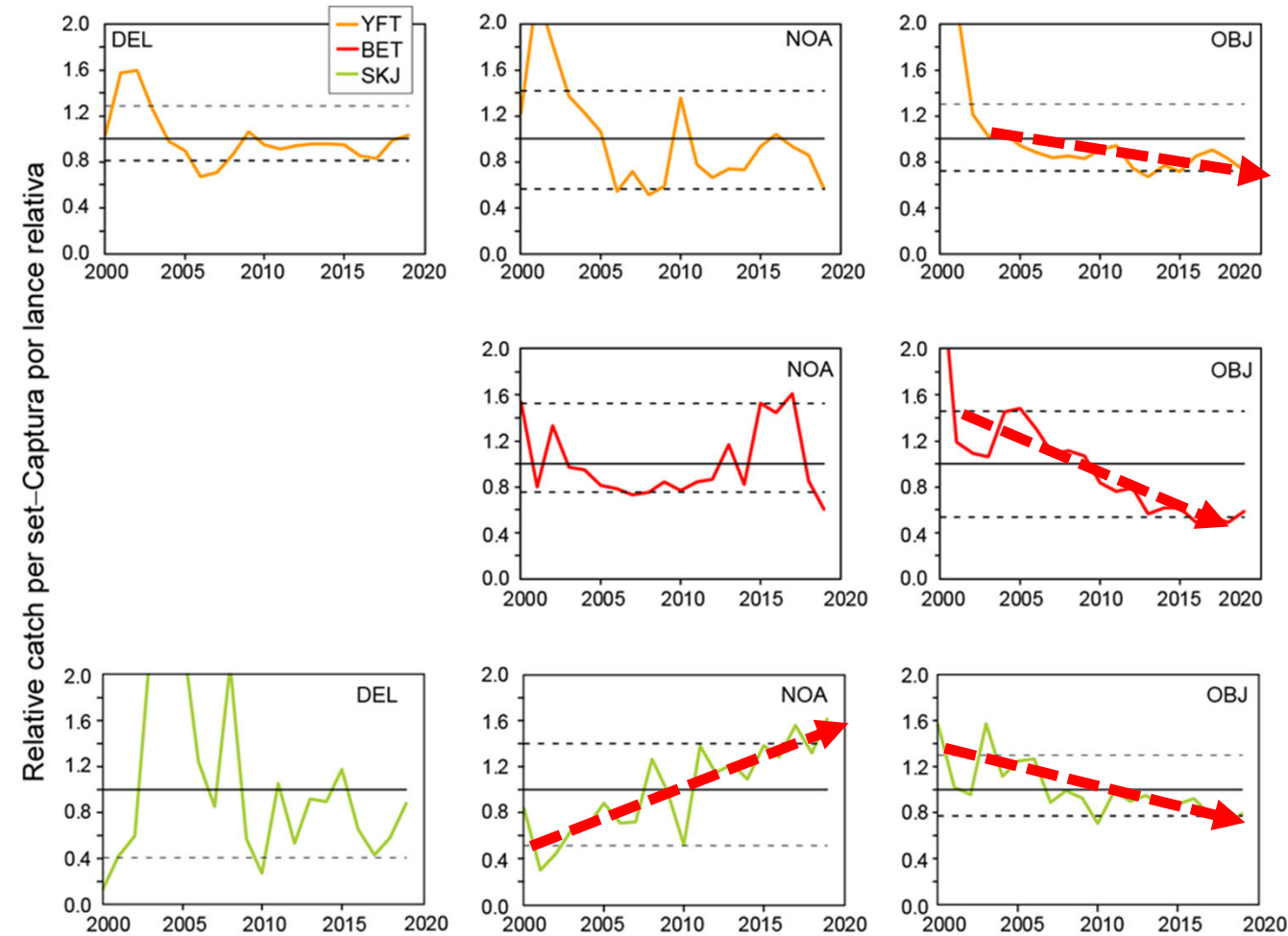
Purse seine: Catch in weight by species and set type



- Increase in the catch of YFT and SKJ in the floating object fishery

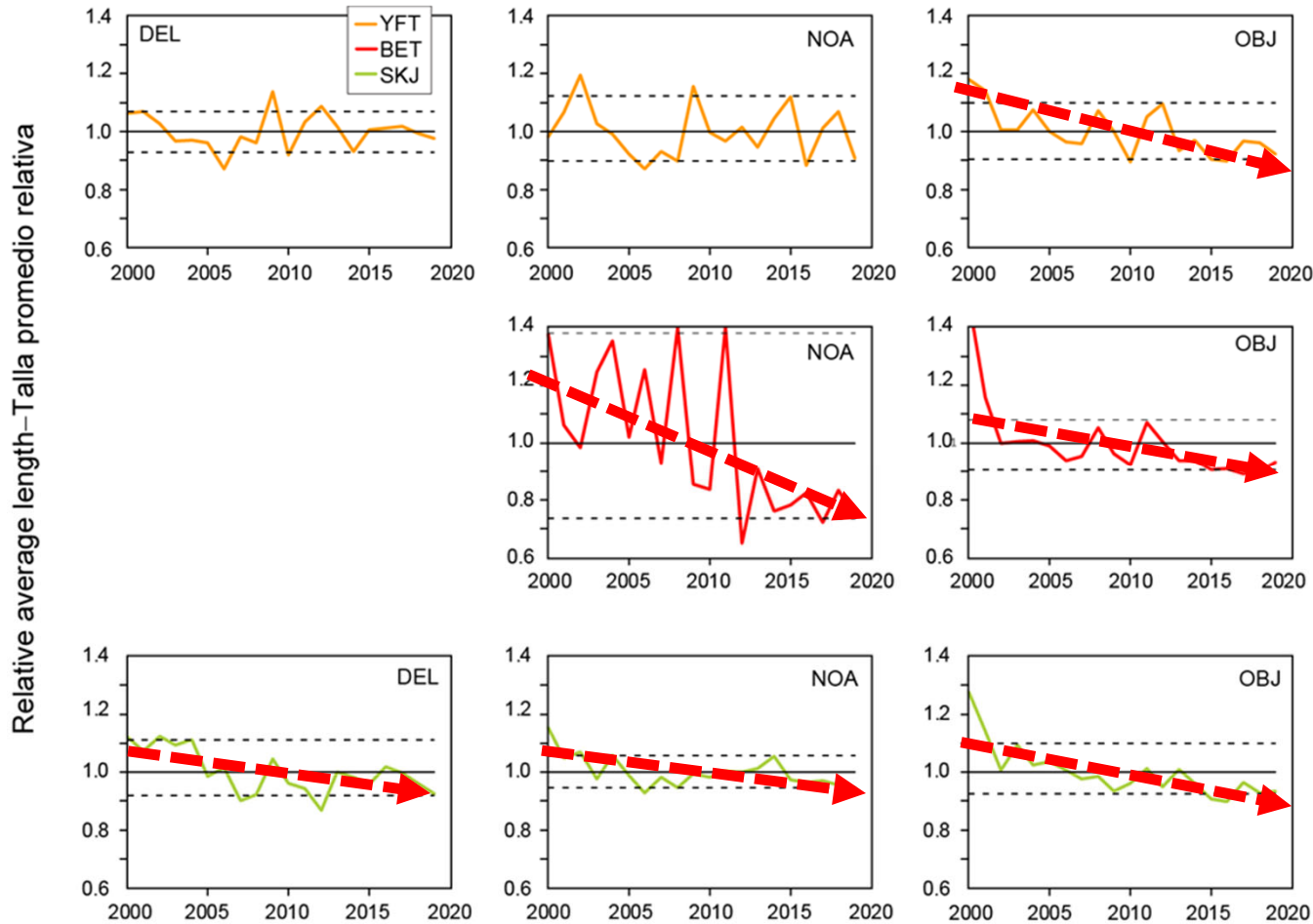


Purse seine: Catch per set by species and set type



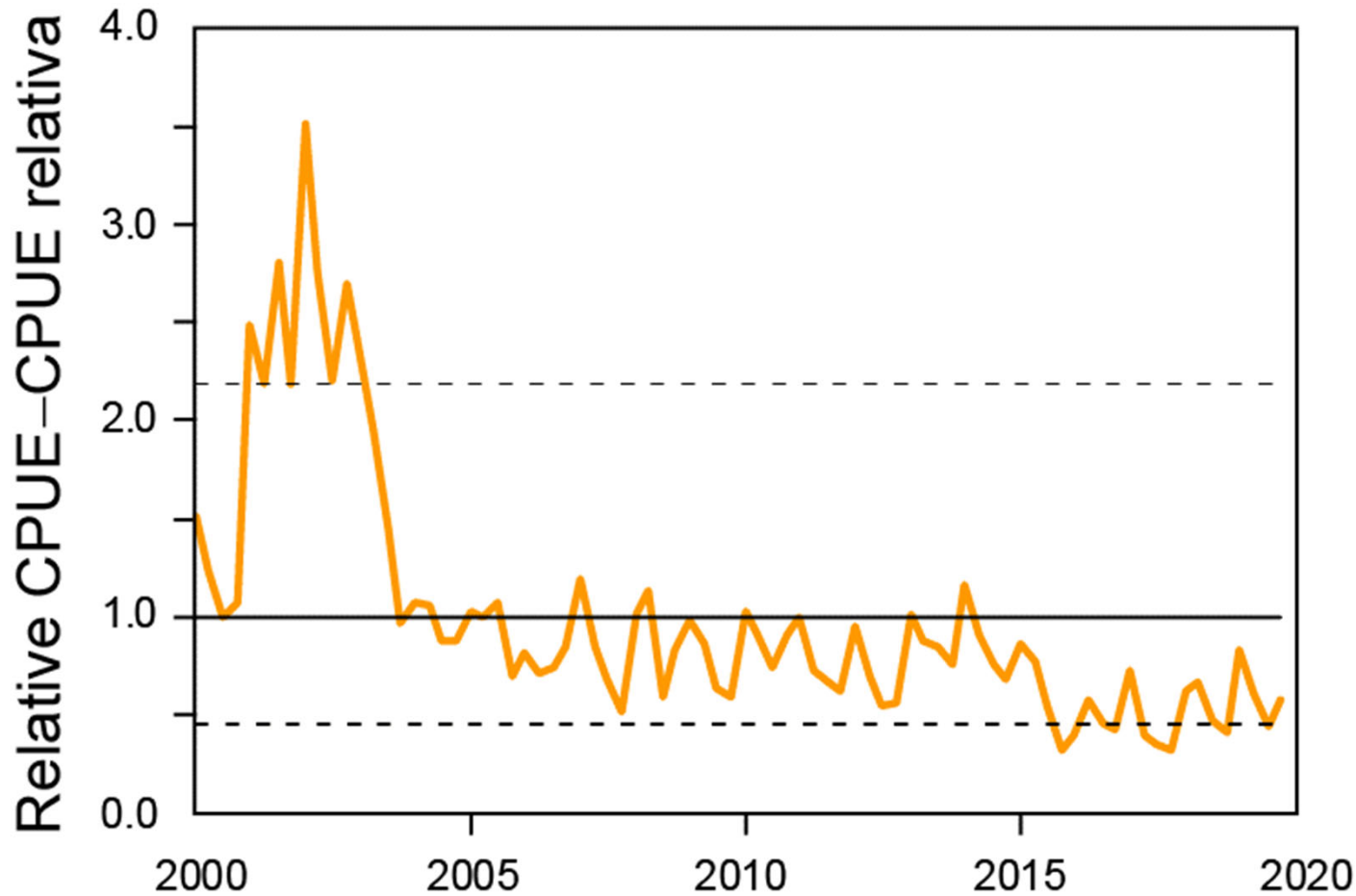
- A decline in the floating object catch per set for all three species
- Increase in catch per set for SKJ in the unassociated fishery

Purse seine: Average length by species and set type



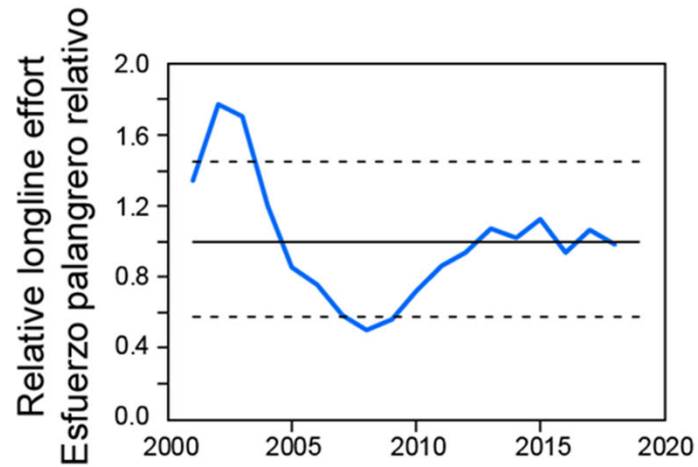
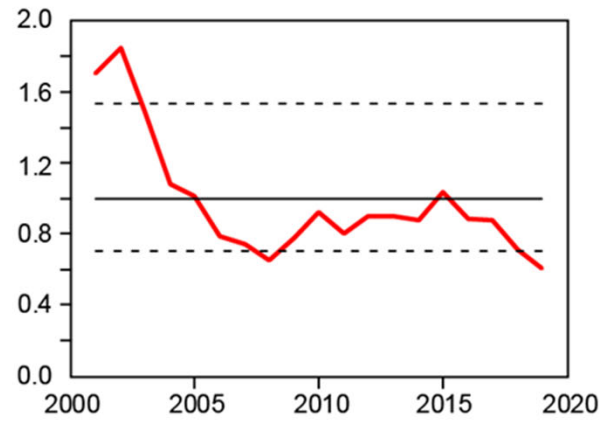
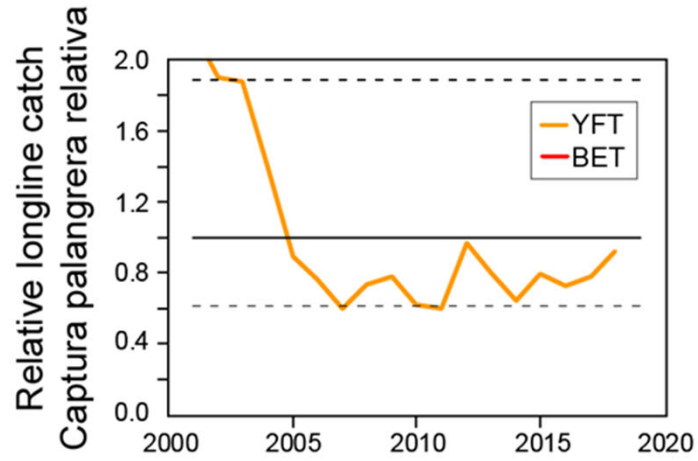
- A decline in the floating object average length for all three species
- A decline in average length for BET and SKJ in the other set types

Purse seine: Standardized YFT DEL CPUE

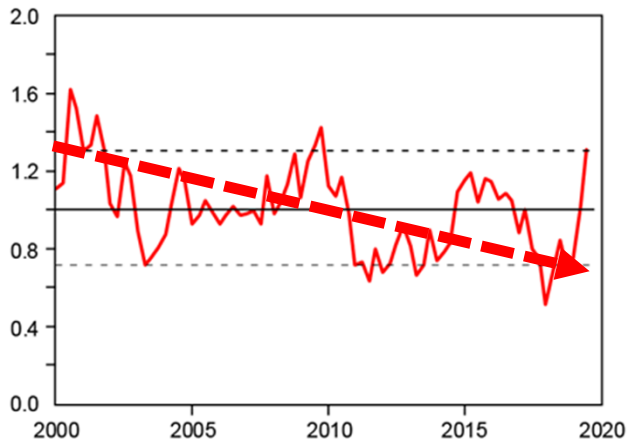
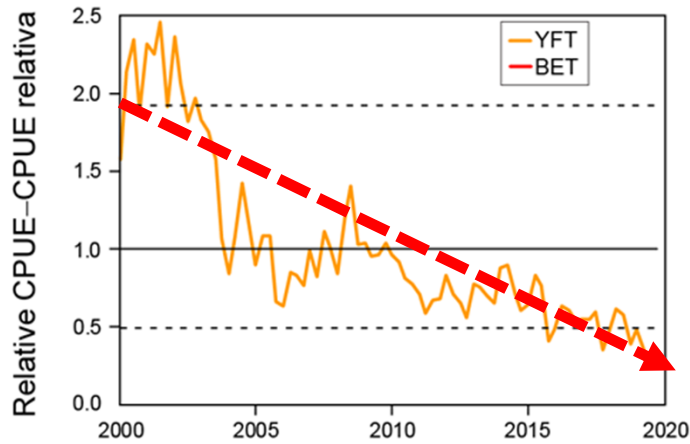


- A decline in standardized catch per day fished of YFT in the dolphin associated fishery

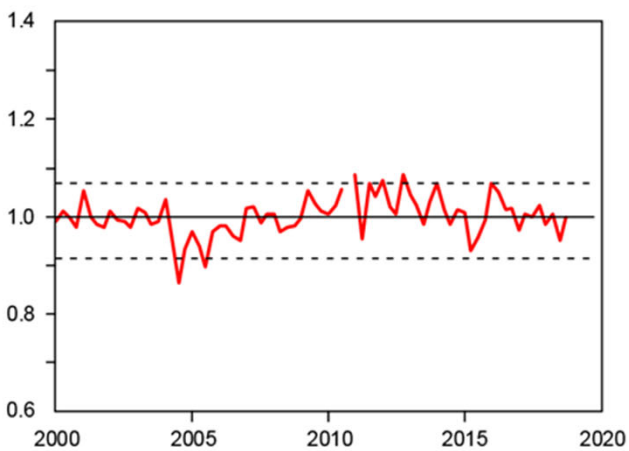
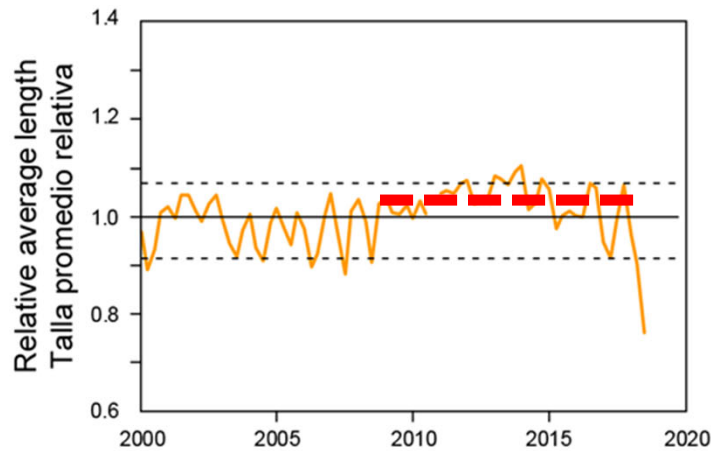
Longline: Catch and effort



Longline: Standardized CPUE and average length



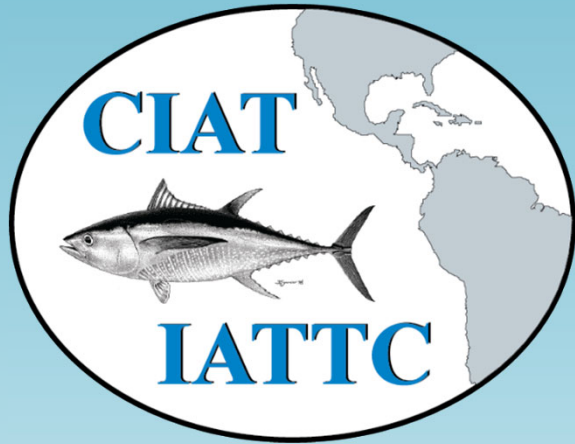
- A decline in standardized YFT and BET CPUE
- A period of increased YFT average length



Summary

Most SSIs based on the floating-object fishery suggest that the fishing mortality of all three species has increased

Mainly due to the increase in the number of floating-object sets



Questions

Purse seine: Catch in numbers by species and set type

